

BEARING BASE: NAD83 Missouri State Planes, Central Zone, US Foot.

MO Geographic Reference System Station: "Boone 2"

PRINTS ISSUED
08-26-2016
REVISIONS:

Central Missouri Professional Services, Inc.
ENGINEERING - SURVEYING - MATERIALS TESTING
2500 E. McCARTY
JEFFERSON CITY, MISSOURI 65101
(573) 634-3455
(573) 634-8898

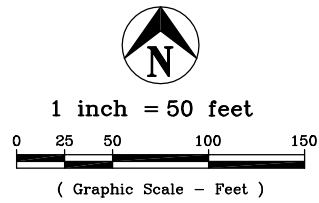
Keith M. Brickley
MO PLS #2578

AMEREN - GAS MAIN
COSMO PARK
AMEREN
COSMO PARK
COLUMBIA, BOONE CO., MISSOURI

CMPS JOB No. 11-071
DRN. BY: CFB
CKD. BY: JBR

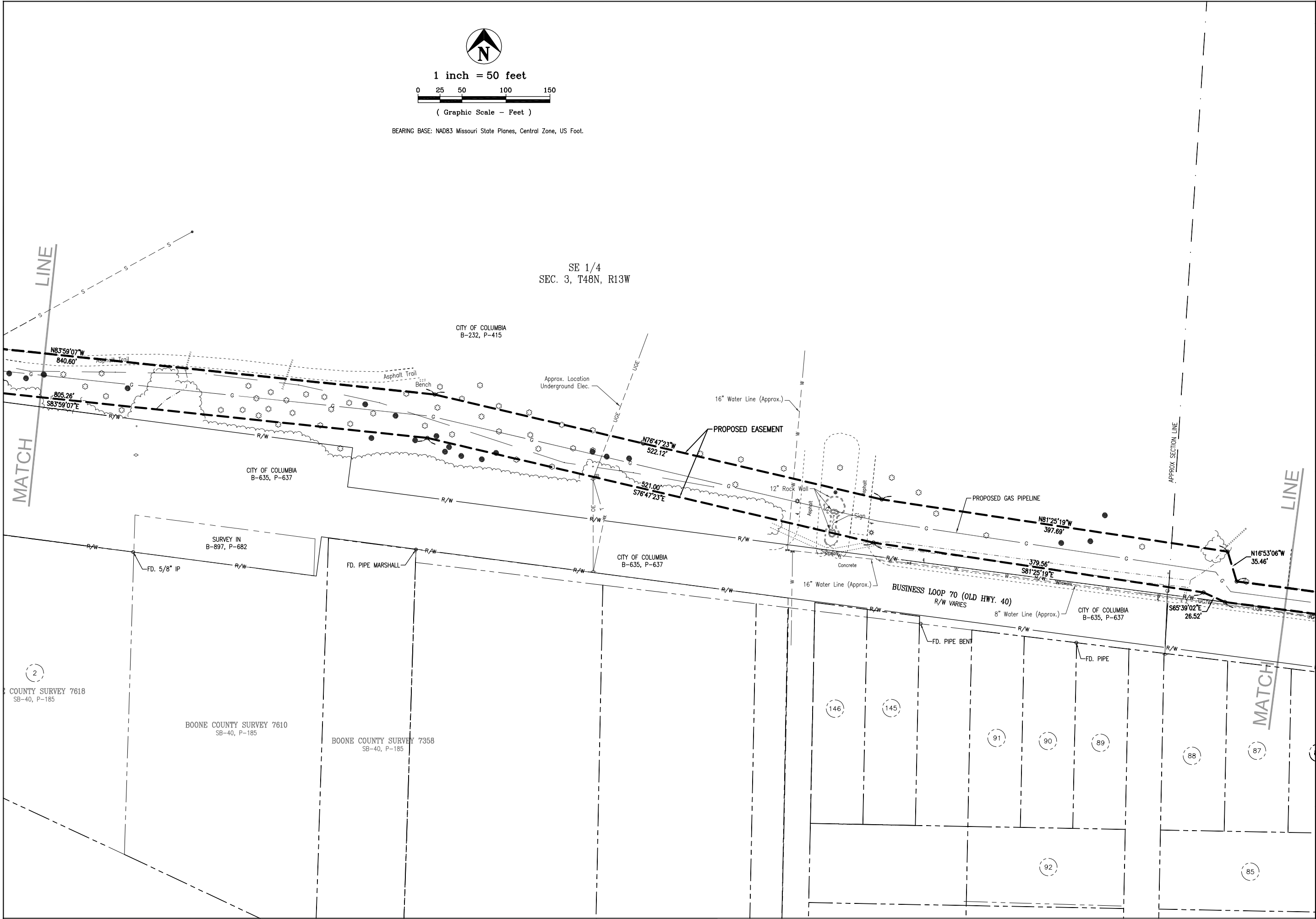
SCALE: 1"=50'

SHEET TITLE
**EASEMENT
EXHIBIT**
SHEET NUMBER
1
OF 6 SHEETS



BEARING BASE: NAD83 Missouri State Planes, Central Zone, US Foot.

SE 1/4
SEC. 3, T48N, R13W



PRINTS ISSUED
08-26-2016
REVISIONS:

Central Missouri Professional Services, Inc.
ENGINEERING - SURVEYING - MATERIALS TESTING
2500 E. McCARTY
JEFFERSON CITY, MISSOURI 65101
(573) 634-3455
(573) 634-8898



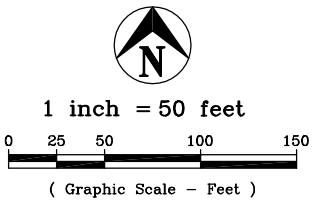
Keith M. Brickley
MO PLS #2578

AMEREN - GAS MAIN
COSMO PARK
AMEREN
COSMO PARK
COLUMBIA, BOONE CO., MISSOURI

CMPS JOB No. 11-071
DRN. BY: CFB
CKD. BY: JBR

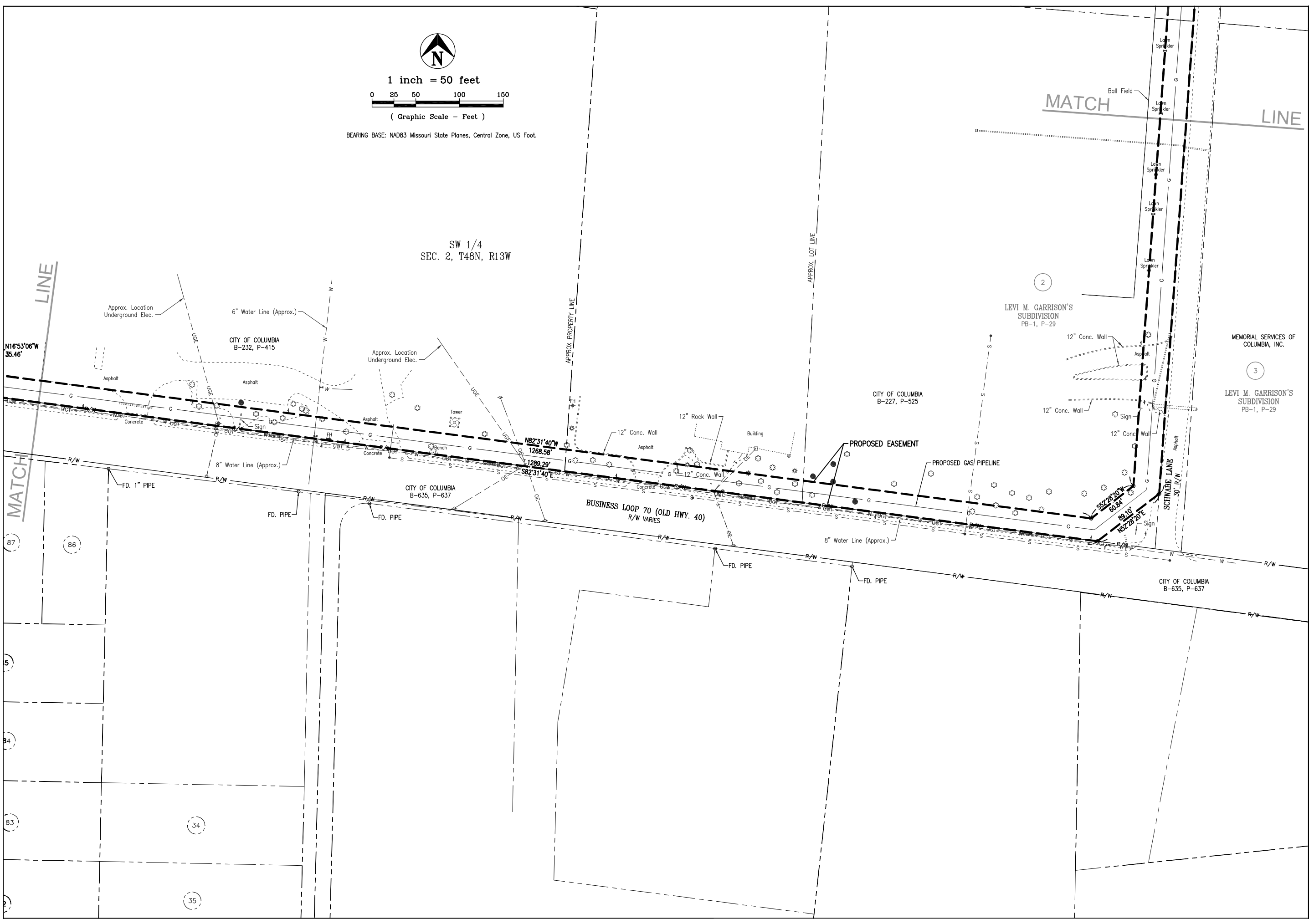
SCALE: 1"=50'

SHEET TITLE
**EASEMENT
EXHIBIT**
SHEET NUMBER
2
OF 6 SHEETS



BEARING BASE: NAD83 Missouri State Planes, Central Zone, US Foot.

SW 1/4
SEC. 2, T48N, R13W



PRINTS ISSUED
08-26-2016

REVISIONS:

Central Missouri Professional Services, Inc.
ENGINEERING - SURVEYING - MATERIALS TESTING
2500 E. McCARTY
JEFFERSON CITY, MISSOURI 65101
(573) 634-3455
(573) 634-8898



Keith M. Brickey
MO PLS #2578

AMEREN - GAS MAIN
COSMO PARK
AMEREN
COSMO PARK
COLUMBIA, BOONE CO., MISSOURI

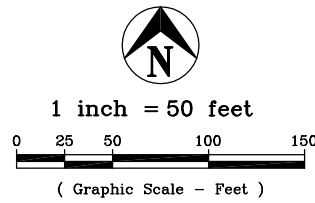
CMPS JOB No. 11-071

DRN. BY: CFB CKD. BY: JBR

SCALE: 1"=50'

SHEET TITLE
EASEMENT
EXHIBIT

SHEET NUMBER
3
OF 6 SHEETS



BEARING BASE: NAD83 Missouri State Planes, Central Zone, US Foot.

11
LEVI M. GARRISON'S
SUBDIVISION
PB-1, P-29

MATCH

LINE

CITY OF COLUMBIA
B-227, P-525

MEMORIAL SERVICES OF
COLUMBIA, INC.
B-464, P-343

7

LEVI M. GARRISON'S
SUBDIVISION
PB-1, P-29

APPROX. LOT LINE

S46°16'33"E
25.95'

2204.37'
N4°09'07"E
Asphalt

12
LEVI M. GARRISON'S
SUBDIVISION
PB-1, P-29

MEMORIAL SERVICES OF
COLUMBIA, INC.
B-464, P-343

6

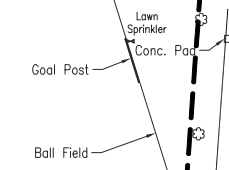
LEVI M. GARRISON'S
SUBDIVISION
PB-1, P-29

APPROX. LOT LINE

SW 1/4
SEC. 2, T48N, R13W

PROPOSED GAS PIPELINE
PROPOSED EASEMENT

SCHWABE LANE
30' R/W
Asphalt



CITY OF COLUMBIA
B-227, P-525

13
LEVI M. GARRISON'S
SUBDIVISION
PB-1, P-29

MEMORIAL SERVICES OF
COLUMBIA, INC.

5

LEVI M. GARRISON'S
SUBDIVISION
PB-1, P-29

APPROX. LOT LINE

S4°09'07"W
1092.88'

Net

Scoreboard

Lawn Sprinkler

Lawn Sprinkler

Lawn Sprinkler

Lawn Sprinkler

Lawn Sprinkler

Lawn Sprinkler

Lawn Sprinkler

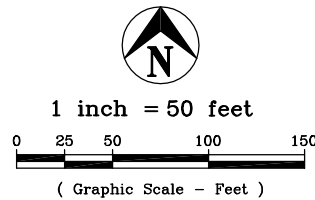
Lawn Sprinkler

Lawn Sprinkler

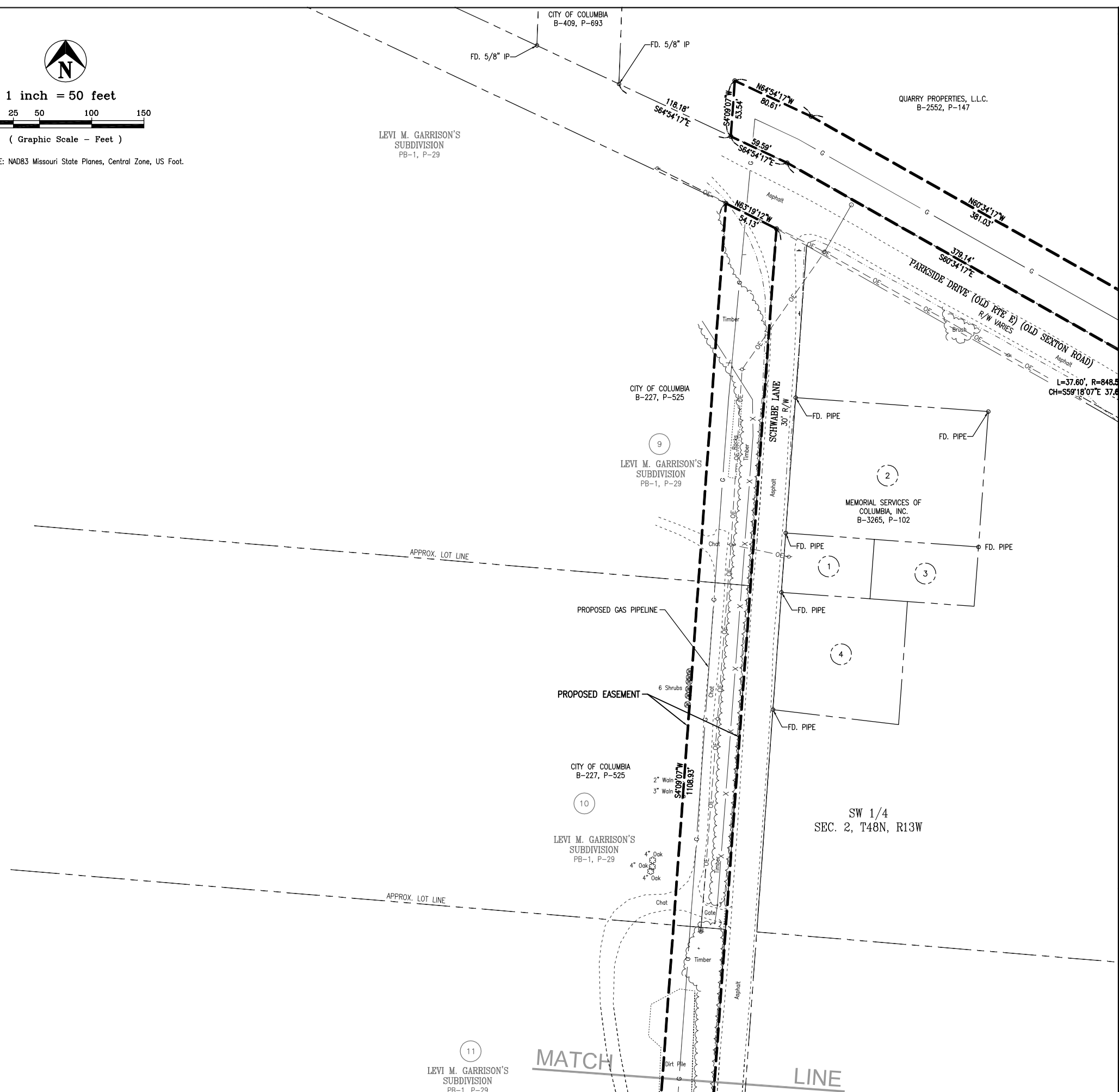
MATCH

LINE

PRINTS ISSUED	
08-26-2016	
REVISIONS:	
Central Missouri Professional Services, Inc. ENGINEERING - SURVEYING - MATERIALS TESTING 2500 E. McCARTY JEFFERSON CITY, MISSOURI 65101 (573) 634-3455 (573) 634-8898	
Keith M. Brickley MO PLS #2578	
AMEREN - GAS MAIN COSMO PARK AMEREN COSMO PARK COLUMBIA, BOONE CO., MISSOURI	
CMPS JOB No.	11-071
DRN. BY:	CKD. BY:
CFB	JBR
SCALE:	1"=50'
SHEET TITLE	
EASEMENT EXHIBIT	
SHEET NUMBER	
4 OF 6 SHEETS	



BEARING BASE: NAD83 Missouri State Planes, Central Zone, US Foot.



PRINTS ISSUED
08-26-2016
REVISIONS:

Central Missouri Professional Services, Inc.
ENGINEERING - SURVEYING - MATERIALS TESTING
2500 E. McCARTY
JEFFERSON CITY, MISSOURI 65101
(573) 634-3455
(573) 634-8898

Keith M. Brickley
MO PLS #2578

**AMEREN - GAS MAIN
COSMO PARK**
AMEREN
COSMO PARK
COLUMBIA, BOONE CO., MISSOURI

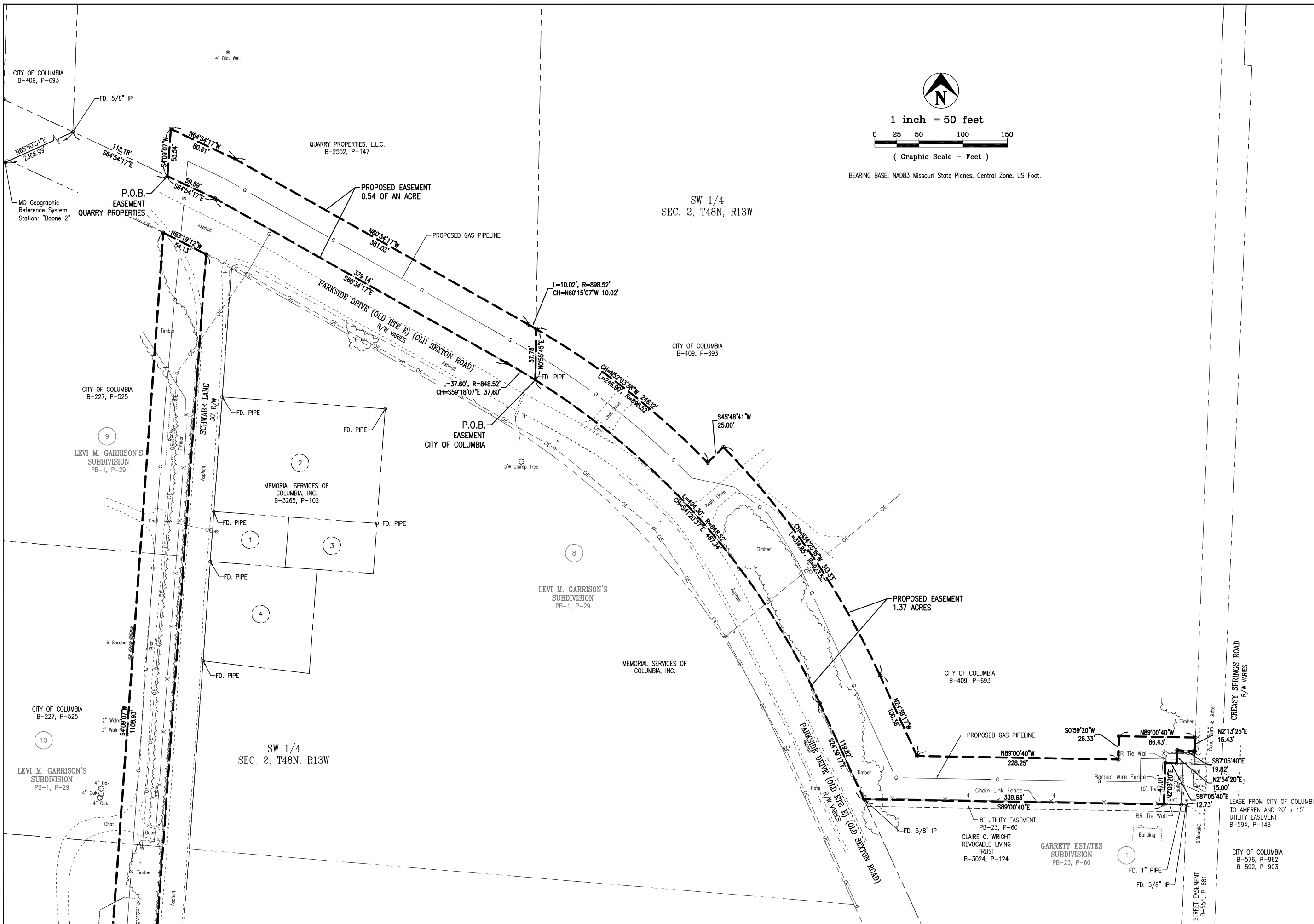
CMPS JOB No. 11-071
DRN. BY: CFB
CKD. BY: JBR

SCALE: 1"=50'

SHEET TITLE
**EASEMENT
EXHIBIT**
SHEET NUMBER
5
OF 6 SHEETS

11
LEVI M. GARRISON'S
SUBDIVISION
PB-1, P-29

MATCH
LINE



1 inch = 50 feet



(Graphic Scale - Feet)

BEARING BASE: NAD83 Missouri State Planes, Central Zone, US Foot.

PRINTS ISSUED
08-26-2016

REVISIONS:

Central Missouri Professional Services, Inc.
ENGINEERING - SURVEYING - MATERIALS TESTING
2500 E. McCARTY
JEFFERSON CITY, MISSOURI 65101
(573) 634-3455
(573) 634-8898



Keith M. Brickley
MO PLS #2578

AMEREN - GAS MAIN
COSMO PARK
AMEREN
COSMO PARK
COLUMBIA, BOONE CO., MISSOURI

CMPS JOB No. 11-071

DRN. BY: CFB CKD. BY: JBR

SCALE: 1"=50'

SHEET TITLE
EASEMENT
EXHIBIT

SHEET NUMBER
6
OF 6 SHEETS