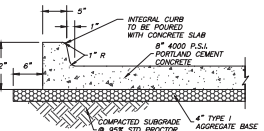
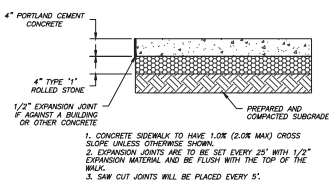


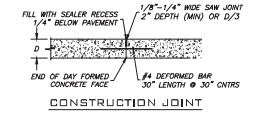
CONCRETE PARKING BUMPER
N.T.S.



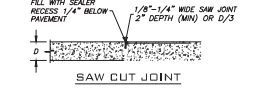
HEAVY DUTY CONCRETE PAVEMENT & INTEGRAL CURB
N.T.S. (FREESTANDING)



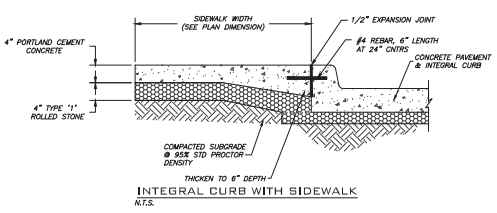
CONCRETE SIDEWALK
N.T.S.



CONSTRUCTION JOINT



SAW CUT JOINT



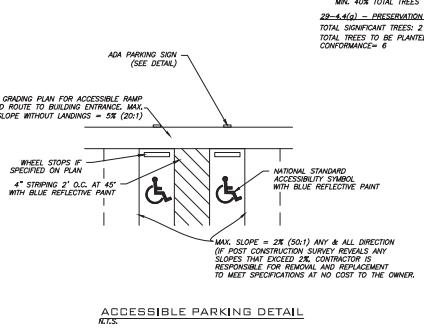
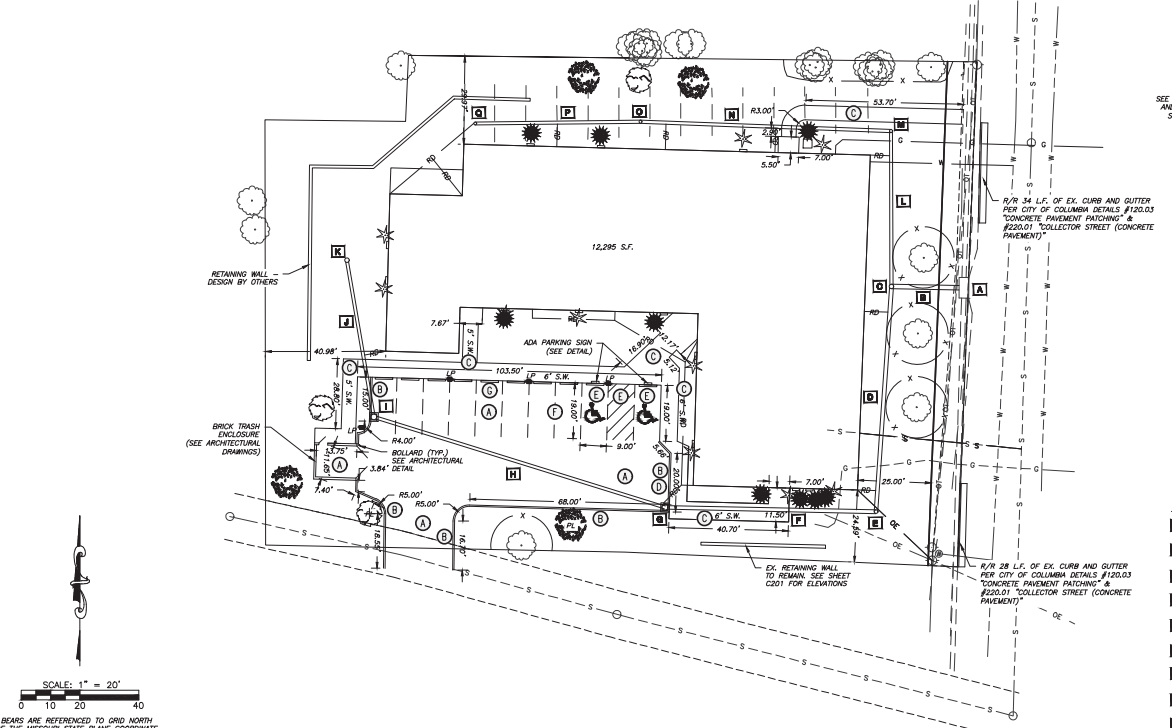
INTEGRAL CURB WITH SIDEWALK
N.T.S.

- CONSTRUCTION NOTES**
- CONSTRUCT HEAVY DUTY PAVEMENT IN AREAS SHOWN. SEE DETAIL THIS SHEET.
 - CONSTRUCT 8" PC CONCRETE INTEGRAL CURB. SEE DETAIL THIS SHEET.
 - CONSTRUCT 4" PC CONCRETE SIDEWALK. SEE DETAIL THIS SHEET.
 - CONSTRUCT CONCRETE INTEGRAL CURB WITH SIDEWALK. SEE PLAN FOR WIDTH. SEE DETAIL THIS SHEET.
 - PAINT 1/2" PARKING STALL AND AISLE WITH 4" SOLID STRIPE AS SHOWN, COLOR BLUE, AND INSTALL REQUIRED SIGNS. SEE DETAIL THIS SHEET.
 - PAINT PARKING STALL WITH 4" SOLID STRIPE AS SHOWN, COLOR WHITE, TYPICAL ALL STALLS EXCEPT 1/2".
 - INSTALL CONCRETE PARKING BUMPER, TYPICAL ALL STALLS. SEE DETAIL THIS SHEET.

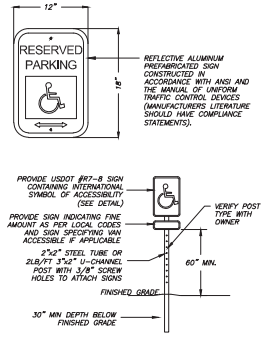
LANDSCAPING TABLE

SYMBOL	QUANTITY	COMMON NAME	SCIENTIFIC NAME	CONTAINER/SIZE	SPACING	CATEGORY
PARKING LOT/BIENPOINT TREE REPLACEMENT						
	3	RED MAPLE	ACER RUBRUM	2" GAL - BAB	15' CENTERS	LARGE DECIDUOUS SHADE TREE - MATURE HEIGHT >45'
	3	DURA-HEAT RIVER BIRCH	BETULA NIGRA	2" GAL - BAB	15' CENTERS	MEDIUM DECIDUOUS SHADE TREE - MATURE HEIGHT 30'-45'
BENTON-STEPHENS UC-O A/C SCREENING						
	2	GREEN GEM BOXWOOD	BUXUS X "GREEN GEM"	5 GAL.	4' CENTERS	A/C SCREENING
	11	SPARTAN CHINESE JUNIPER	JUNIPERUS CHINENSIS "SPARTAN"	5 GAL.	5' CENTERS	A/C SCREENING

- LANDSCAPING NOTES**
- 22-4.4(c) - GENERAL PROVISIONS**
EXISTING CLIMAX FOREST: 0 S.F.
CLIMAX FOREST TO REMAIN: 0 S.F.
REQUIRED 15% OF TOTAL SITE TO BE LANDSCAPED: 39,285 X 0.15 = 5,893 S.F.
PROPOSED AREA OF TOTAL SITE TO BE LANDSCAPED: 19,604 + 508
 - 22-4.4(d) - STREET FRONTAGE LANDSCAPING**
(1) LENGTH OF PAVED AREA (OVER 60' IN LENGTH) WITHIN 25' OF R/W TO HAVE 6' WIDE LANDSCAPED BUFFER
0 S.F.
(2) STREET TREES - LF OF STREET FRONTAGE
(1) TREE PER 60' OF STREET FRONTAGE REQUIRED
171.66 AFB = 2.87 OR 3 TREES
3 EXISTING TREES TO REMAIN (OUT OF R/W)
 - 22-4.4(e) - PROPERTY EDGE BUFFERING**
R-W TO R-W = BUFFER LEVEL 0
 - 22-4.4(f) - PARKING AREA LANDSCAPE**
(4) 1 TREE PER 4,000 S.F. OF ADDITIONAL PAVED AREA (5,135 S.F.) = 2 TREES
(5) MIN. 30% TOTAL TREES TO BE MEDIUM SHADE TREES - 1 TREE
MIN. 40% TOTAL TREES TO BE LARGE SHADE TREES - 1 TREE
 - 22-4.4(g) - PRESERVATION OF EXISTING LANDSCAPING**
TOTAL SIGNIFICANT TREES: 2 DECIDUOUS TREES
TOTAL TREES TO BE PLANTED FOR SIGNIFICANT TREE REMOVAL CONFORMANCE: 0

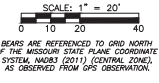


ACCESSIBLE PARKING DETAIL
N.T.S.



HANDICAPPED PARKING SIGN
N.T.S. (FREESTANDING)

- STORM DRAINAGE NOTES**
- EXISTING 6" X 3" TYPE M INLET, E IN N = 762.78, E OUT S = 762.50, NEW E IN W = 762.80
 - 23.00' L.F. 18" HOPE @ 2.0% E IN W = 764.25, E OUT = 762.80
 - 18" M/PLAST INLINE DRAIN, SOLID LID = 773.10, E IN N = 764.76, E IN S = 764.50, E OUT E = 764.25
 - 23.00' L.F. 15" HOPE @ 1.0% E IN W = 765.25, E OUT = 764.25
 - 15" M/PLAST INLINE DRAIN, SOLID LID = 771.25, E IN W = 765.50 E OUT N = 763.25
 - 21.00' L.F. 15" HOPE @ 1.0% E IN W = 766.20, E OUT = 765.50
 - 24" M/PLAST 2'X2' CURB INLET, HIGHWAY GRADE = 772.10, E IN W = 766.55, E OUT E = 766.20
 - 103.00' L.F. 12" HOPE @ 1.5% E IN W = 768.05, E OUT = 766.55
 - 24" M/PLAST 2'X2' CURB INLET, HIGHWAY GRADE = 772.20, E IN W = 768.25, E OUT S.E. = 768.05
 - 52.50' L.F. 12" HOPE @ 1.0% E IN W = 768.80, E OUT = 768.25
 - 18" M/PLAST INLINE DRAIN, 18" PEDESTAL GRADE = 772.00, E OUT S.E. = 768.80
 - 52.40' L.F. 12" HOPE @ 1.0% E IN W = 767.30, E OUT = 766.75
 - 12" M/PLAST INLINE DRAIN, SOLID LID = 769.90, E IN W = 767.50, E OUT S = 767.25
 - 85.00' L.F. 12" HOPE @ 1.0% E IN W = 768.35, E IN W = 767.50
 - 12" M/PLAST INLINE DRAIN, 12" PEDESTAL GRADE = 772.00, E IN W = 768.55 E OUT L = 768.55
 - 56.30' L.F. 8" PVC @ 1.0% E IN W = 769.05, E OUT = 768.55
 - 15" M/PLAST INLINE DRAIN, 15" PEDESTAL GRADE = 772.00, E OUT E = 769.05
- NOTE: SEE ARCHITECTURAL PLANS FOR DETAILS ON ROOF DRAINS



BEARS ARE REFERENCED TO GRID NORTH OF THE MISSOURI STATE PLANE COORDINATE SYSTEM, NAD83 (2011) (CENTRAL ZONE), AS OBSERVED FROM GPS OBSERVATION.

CALL OR CHECK OUR DRYS BEFORE YOU DRY
1-800-466-4671 @ 611
www.ano.com

NUMBER OF TREES TO BE PLANTED SHALL BE DETERMINED BY THE MISSOURI STATE PLANE COORDINATE SYSTEM, NAD83 (2011) (CENTRAL ZONE), AS OBSERVED FROM GPS OBSERVATION.

REVISIONS

CHA OFFICE EXPANSION & RENOVATION SITE PLAN
201 SWITZLER STREET
COLUMBIA, MD
SITE / UTILITY / LANDSCAPING

A CIVIL GROUP
- CIVIL ENGINEERING
- PLANNING
- SURVEYING

3401 BROADWAY
BUSINESS PARK COURT
SUITE 105
COLUMBIA, MD 21046
PH: (573) 817-5750
FAX: (573) 817-1477

MISSOURI CERTIFICATE OF AUTHORITY: 2001006116

THIS DOCUMENT HAS BEEN ELECTRONICALLY SIGNED, SEALED AND DATED.

PROJECT # N00221-01
DRAWING # N00221-01
DRAWN BY KFM
SHEET C301
SHEET 3 OF 3