



2019 Orthophoto Source: Boone County Assessor's Office

#20-2021: Columbia College Range Line Parking Lot Corrective C-2 Rezoning

 City Zoning	 Columbia City Limit
 Parcels	

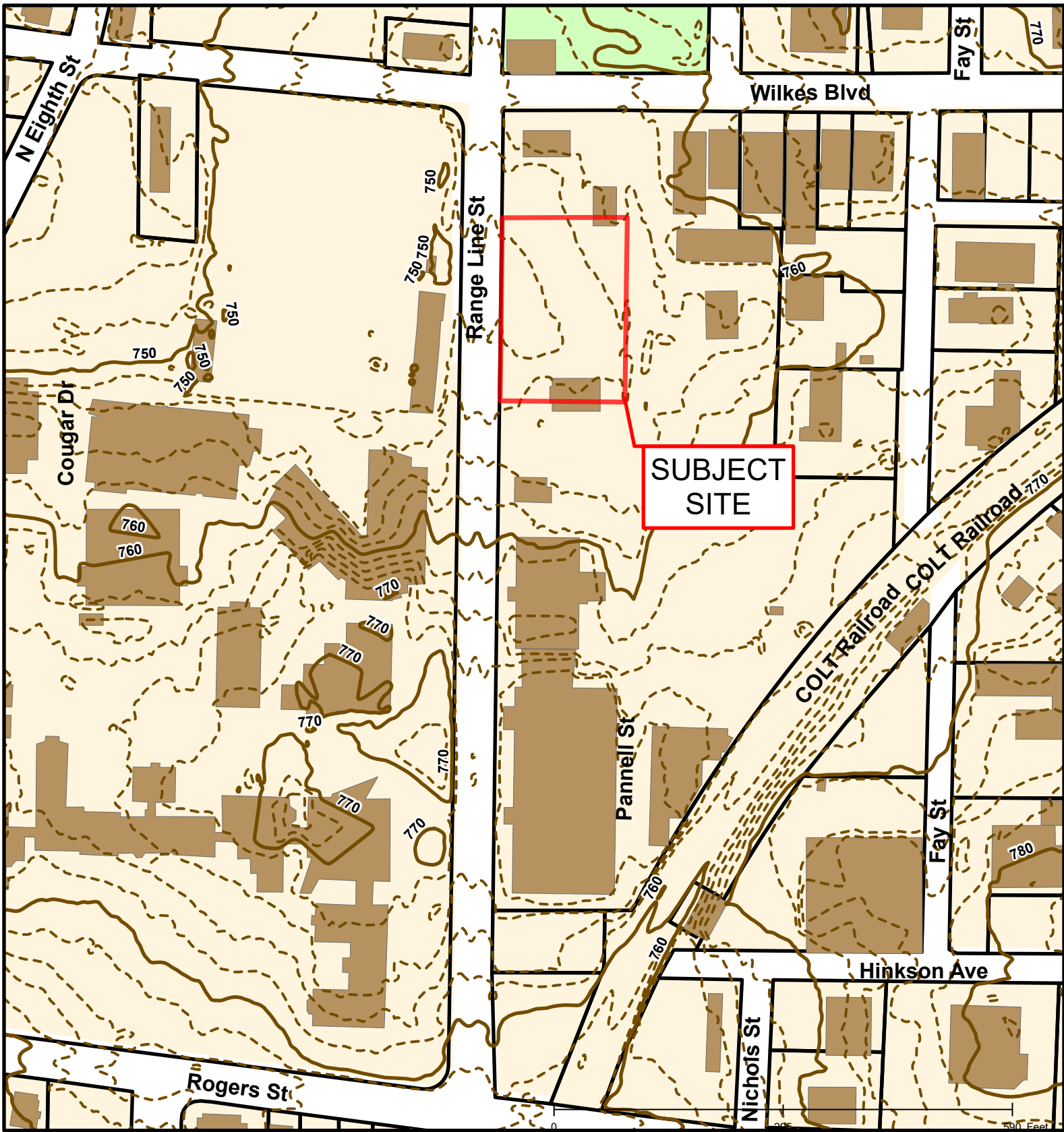


Created by The City of Columbia - Community Development Department

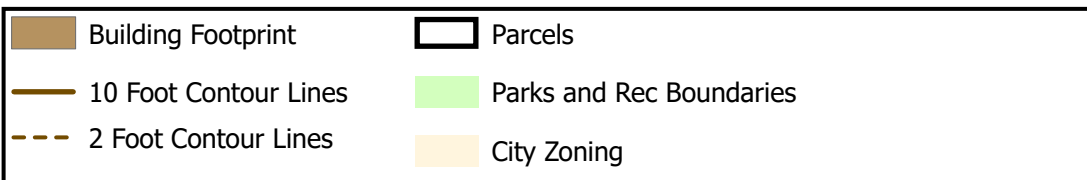
Parcel Data Source: Boone County Assessor

2017 Imagery: Boone County Assessor's Office

Hillshade Data: Boone County GIS



#20-2021: Columbia College Range Line Parking Lot Corrective C-2 Rezoning



Created by The City of Columbia - Community Development Department

Parcel Data Source: Boone County Assessor

2017 Imagery: Boone County Assessor's Office

Hillshade Data: Boone County GIS



#20-2021: Columbia College Range Line Parking Lot Corrective C-2 Rezoning



Created by The City of Columbia - Community Development Department

Parcel Data Source: Boone County Assessor

2017 Imagery: Boone County Assessor's Office

Hillshade Data: Boone County GIS