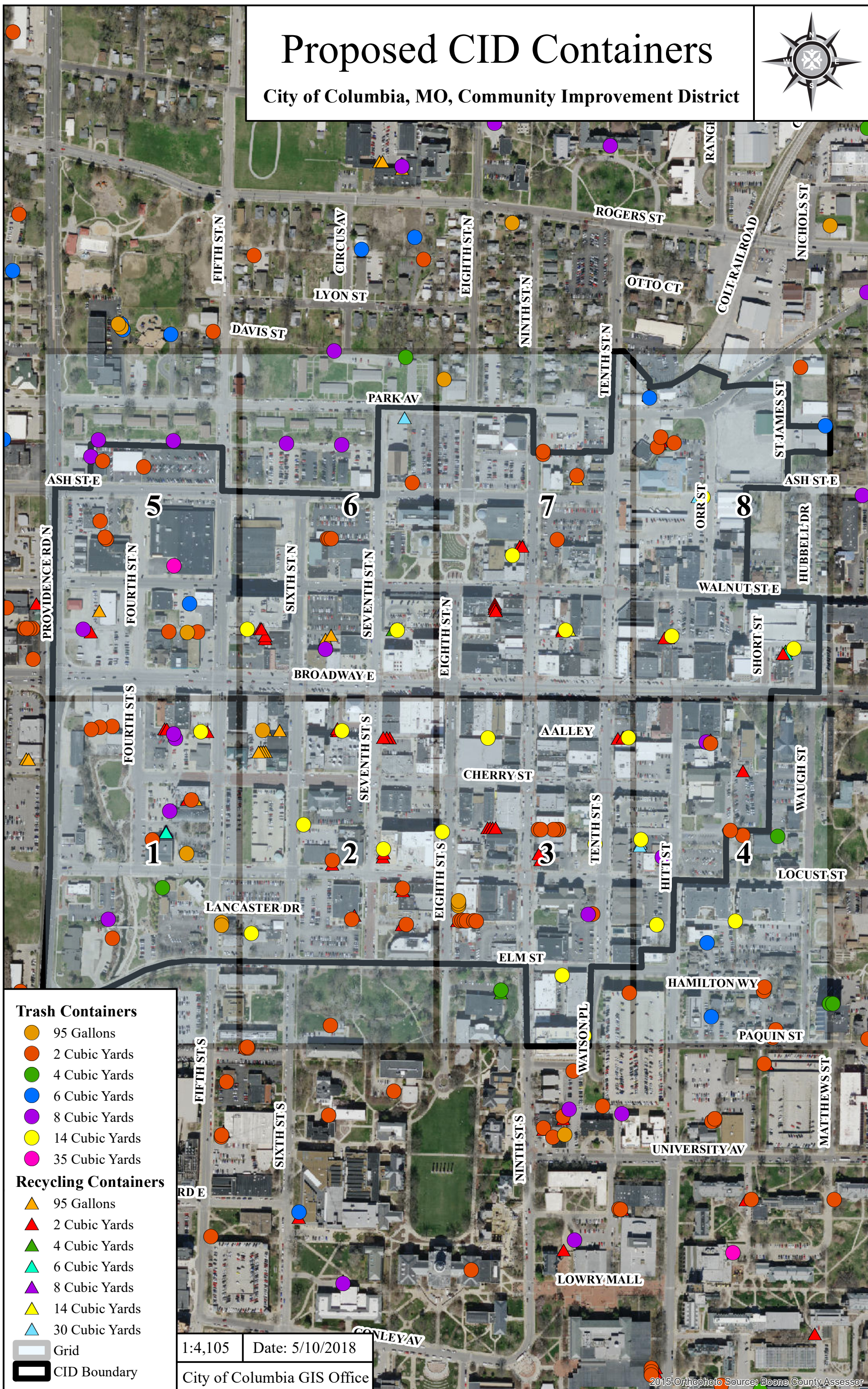


Proposed CID Containers

City of Columbia, MO, Community Improvement District



Trash Containers

- 95 Gallons
- 2 Cubic Yards
- 4 Cubic Yards
- 6 Cubic Yards
- 8 Cubic Yards
- 14 Cubic Yards
- 35 Cubic Yards

Recycling Containers

- ▲ 95 Gallons
- ▲ 2 Cubic Yards
- ▲ 4 Cubic Yards
- ▲ 6 Cubic Yards
- ▲ 8 Cubic Yards
- ▲ 14 Cubic Yards
- ▲ 30 Cubic Yards

- Grid
- CID Boundary

1:4,105

Date: 5/10/2018

City of Columbia GIS Office