

MATCH LINE STA. 5+50

**SCOTT-BROADWAY SIDEWALK**  
SILVEY TO CHRISTIAN FELLOWSHIP  
RIGHT OF WAY SHEET 1

**Mission**  
Provide safe, sustainable  
infrastructure that promotes  
positive communities.

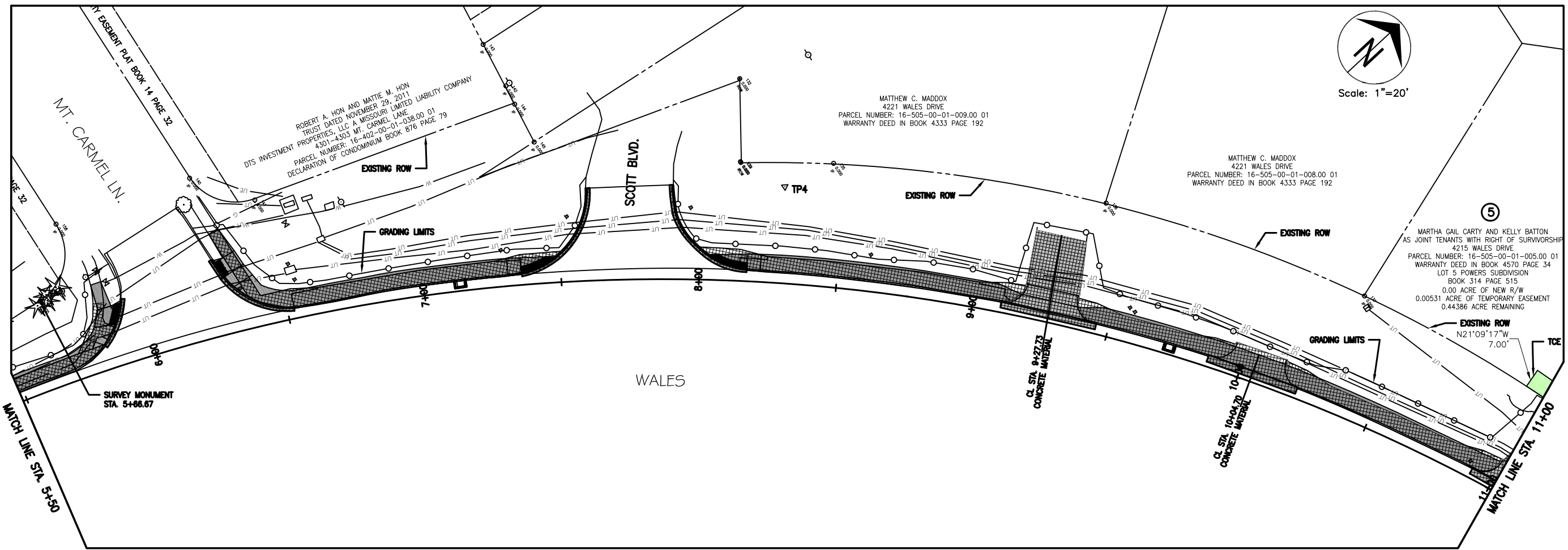
701 East Broadway  
P.O. Box 8015  
Columbia, MO 65205  
(573) 875-2489



Shane Steven Crech  
Registered Professional  
Engineer  
PE-2007011061

File No. TAP-2101(510)  
Scale: 1" = 20'  
Date: 06/5/2023  
Des. E.M.F.  
Dwn. T.L.W  
Chk. A.A.A.

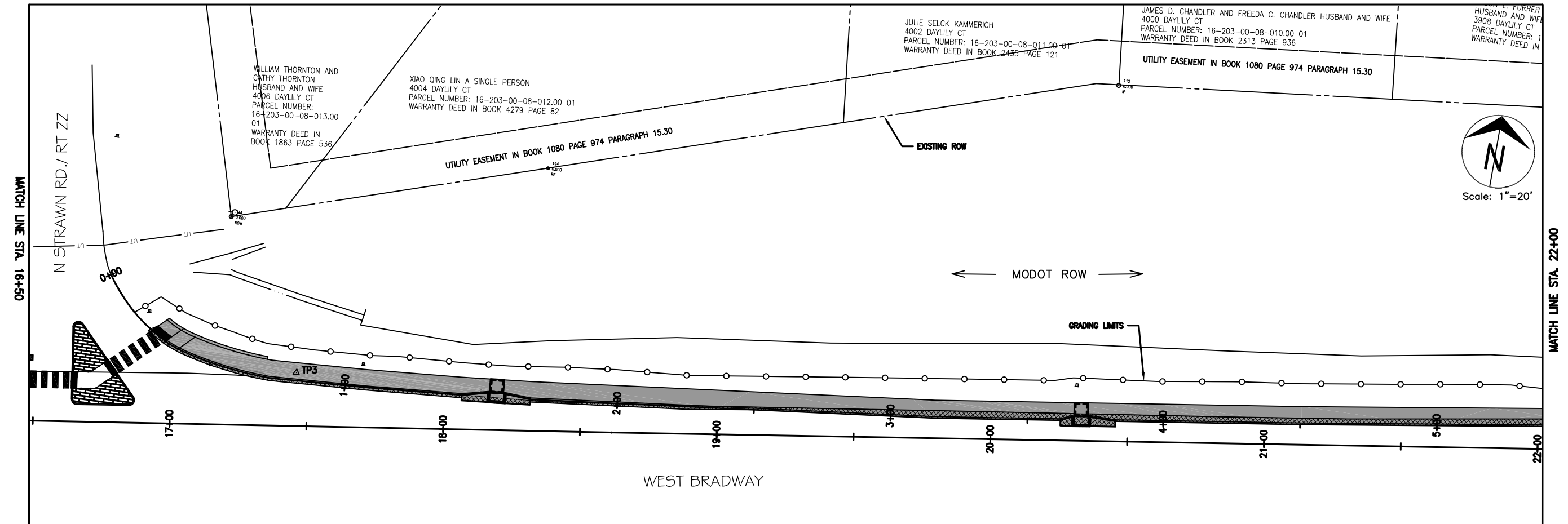
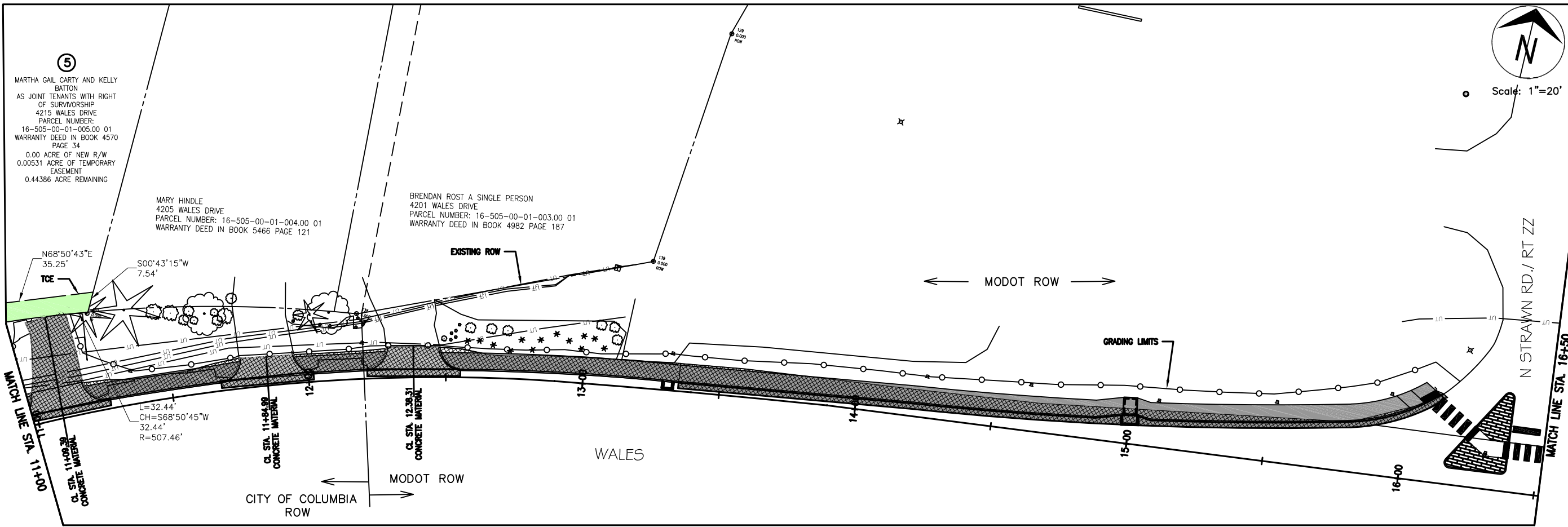
Sheet  
2 of 16



MATCH LINE STA. 5+50

MATCH LINE STA. 11+00

c:\addprog\sidewalk\scott-broadway\design\scott-broadway design - base (4-24-23).dwg



Revision	By	Date	No.

**SCOTT-BROADWAY SIDEWALK**  
 SILVEY TO CHRISTIAN FELLOWSHIP  
 RIGHT OF WAY SHEET 2

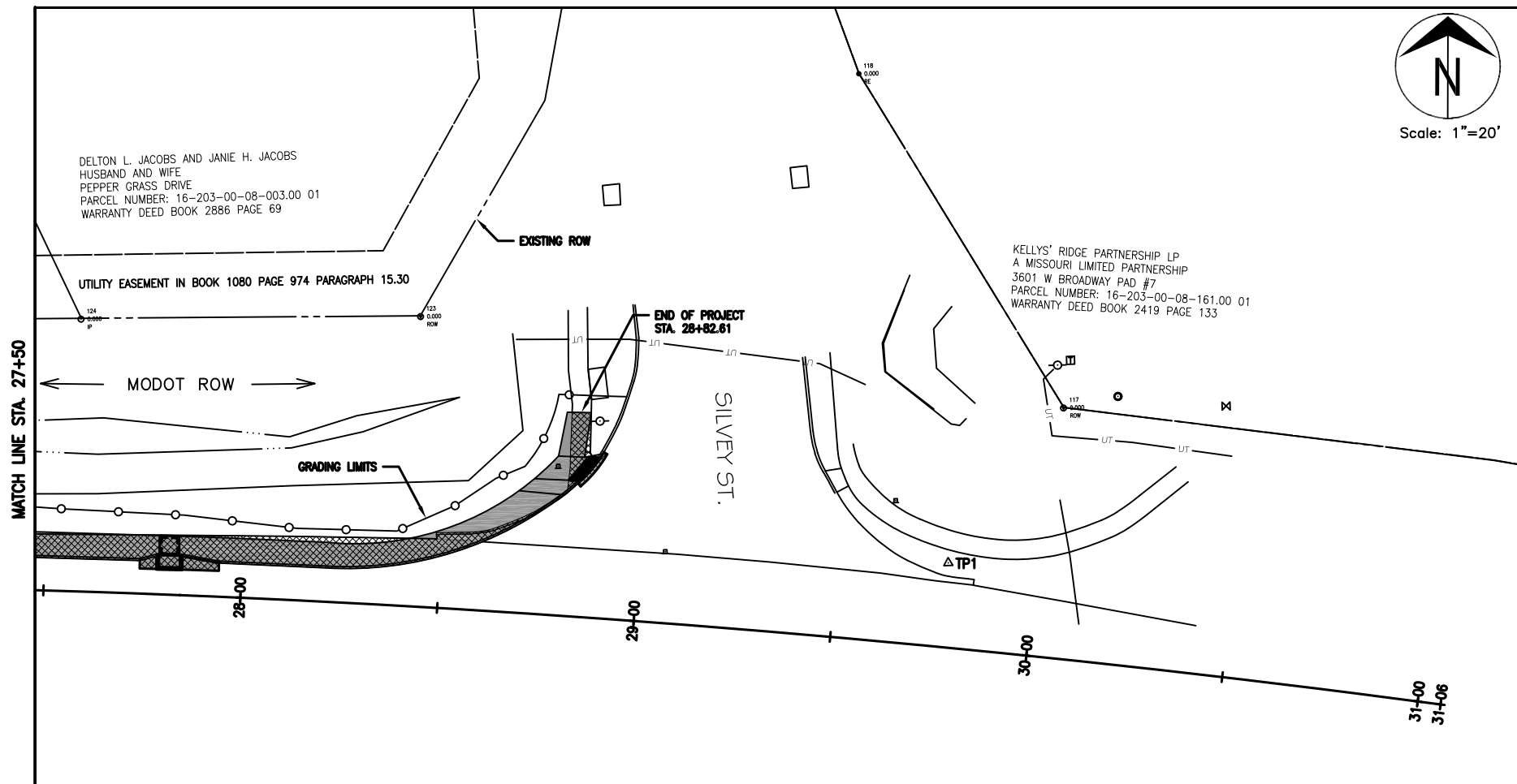
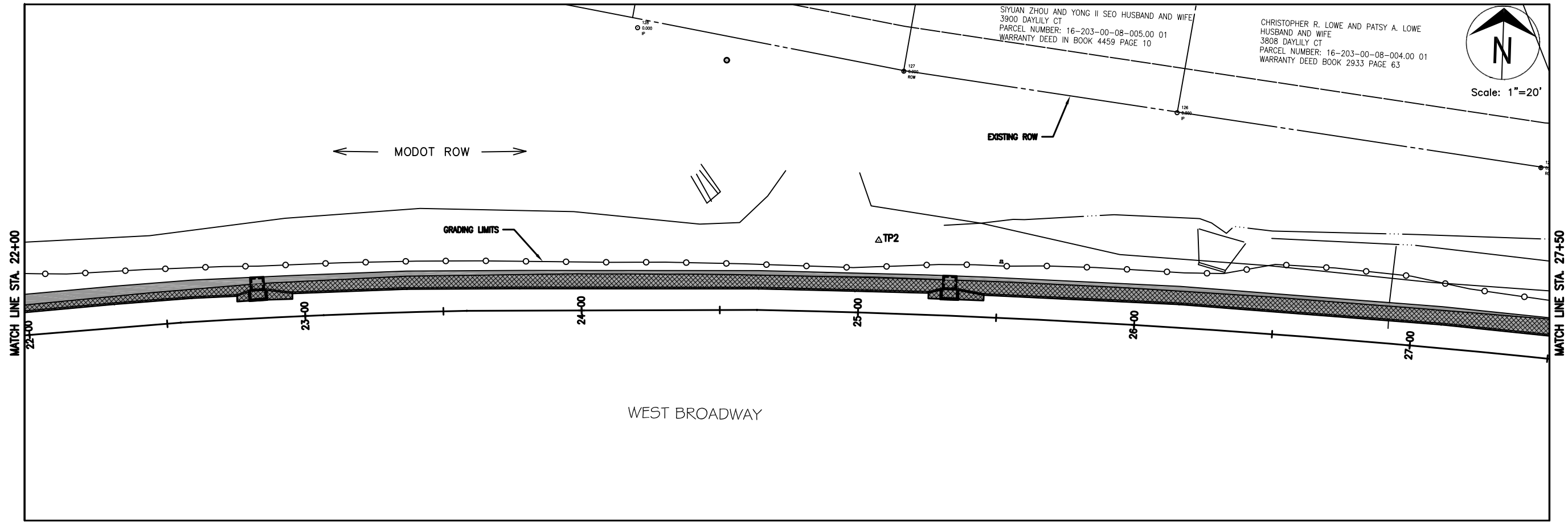
**Mission**  
 Provide safe, sustainable infrastructure that promotes positive communities.  
 701 East Broadway  
 P.O. Box 6015  
 Columbia, MO 65205  
 (573) 875-2489



Shane Steven Creech  
 Registered Professional Engineer  
 PE-2007011061

File No. TAP-2101(510)  
 Scale: #####  
 Date: 06/5/2023  
 Des. E.M.F.  
 Dwn. T.L.W  
 Chk. A.A.A.

c:\adp\proj\sidewalk\scott-broadway\design\scott-broadway design - base (4-24-23).dwg



- TEMPORARY CONSTRUCTION EASEMENT (TCE)
- PERMANENT SIDEWALK EASEMENT (PSE)

**TOTAL REQUIRED EASEMENTS**

TCE (4)	1,306.45	SF
	0.03	ACRE
PSE (1)	5.60	SF
	0.0001	ACRE

Revision	By	Date	No.

**SCOTT-BROADWAY SIDEWALK**  
SILVEY TO CHRISTIAN FELLOWSHIP  
RIGHT OF WAY SHEET 3

**Mission**  
Provide safe, sustainable infrastructure that promotes positive communities.

701 East Broadway  
P.O. Box 6015  
Columbia, MO 65205  
(573) 875-2489



Shane Steven Creech  
Registered Professional Engineer  
PE-2007011061

File No. TAP-2101(510)  
Scale: 1" = 20'  
Date: 06/5/2023  
Des. E.M.F.  
Dwn. T.L.W  
Chk. A.A.A.

c:\adp\proj\sidewalk\scott-broadway sidewalk (silvey to christian fellowship)\design\scott-broadway design - base (4-24-23).dwg