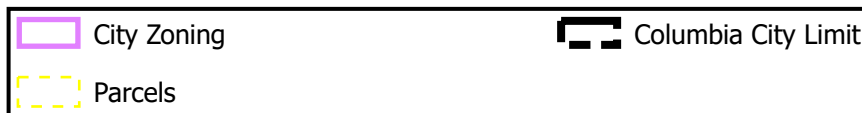
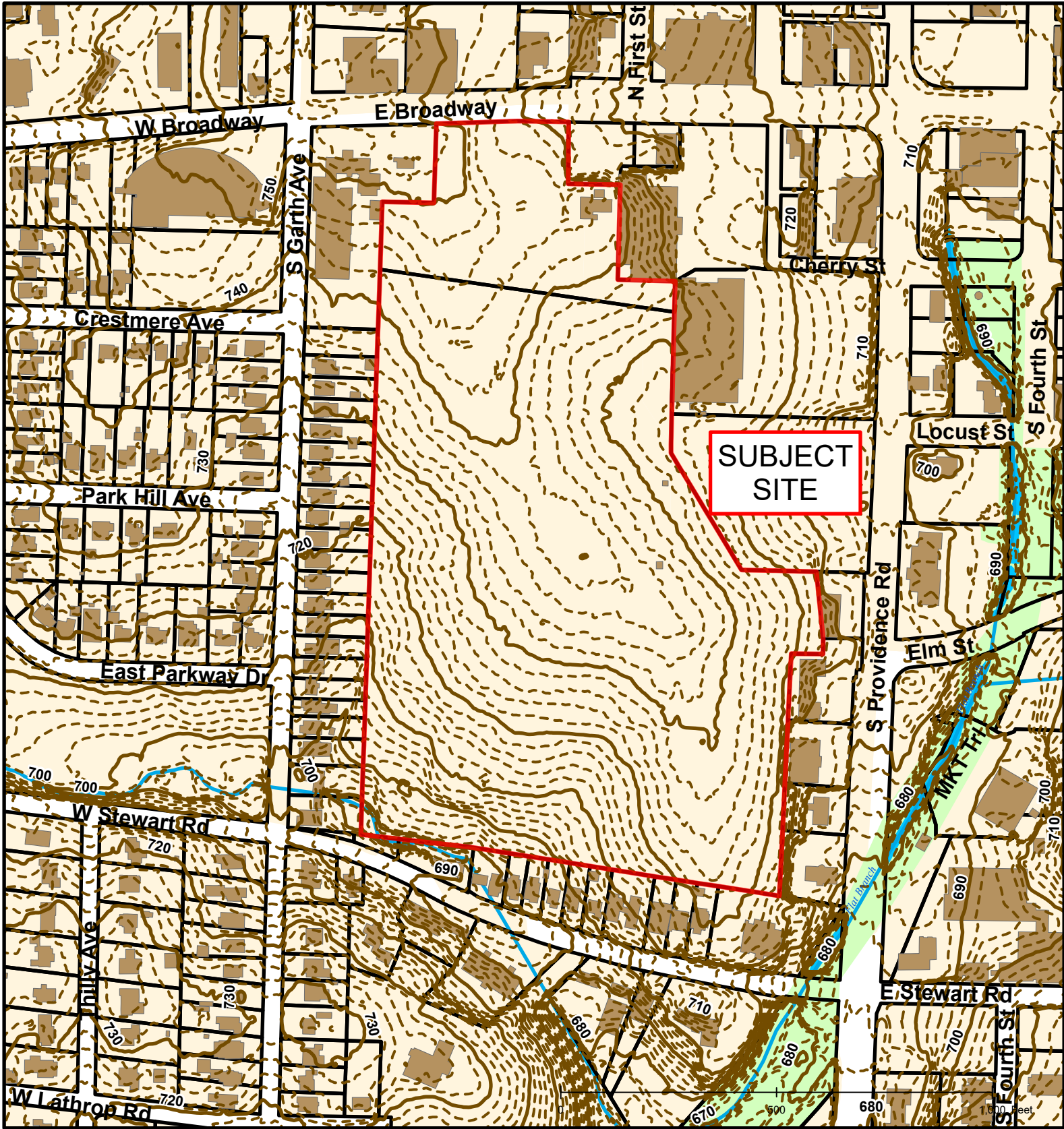




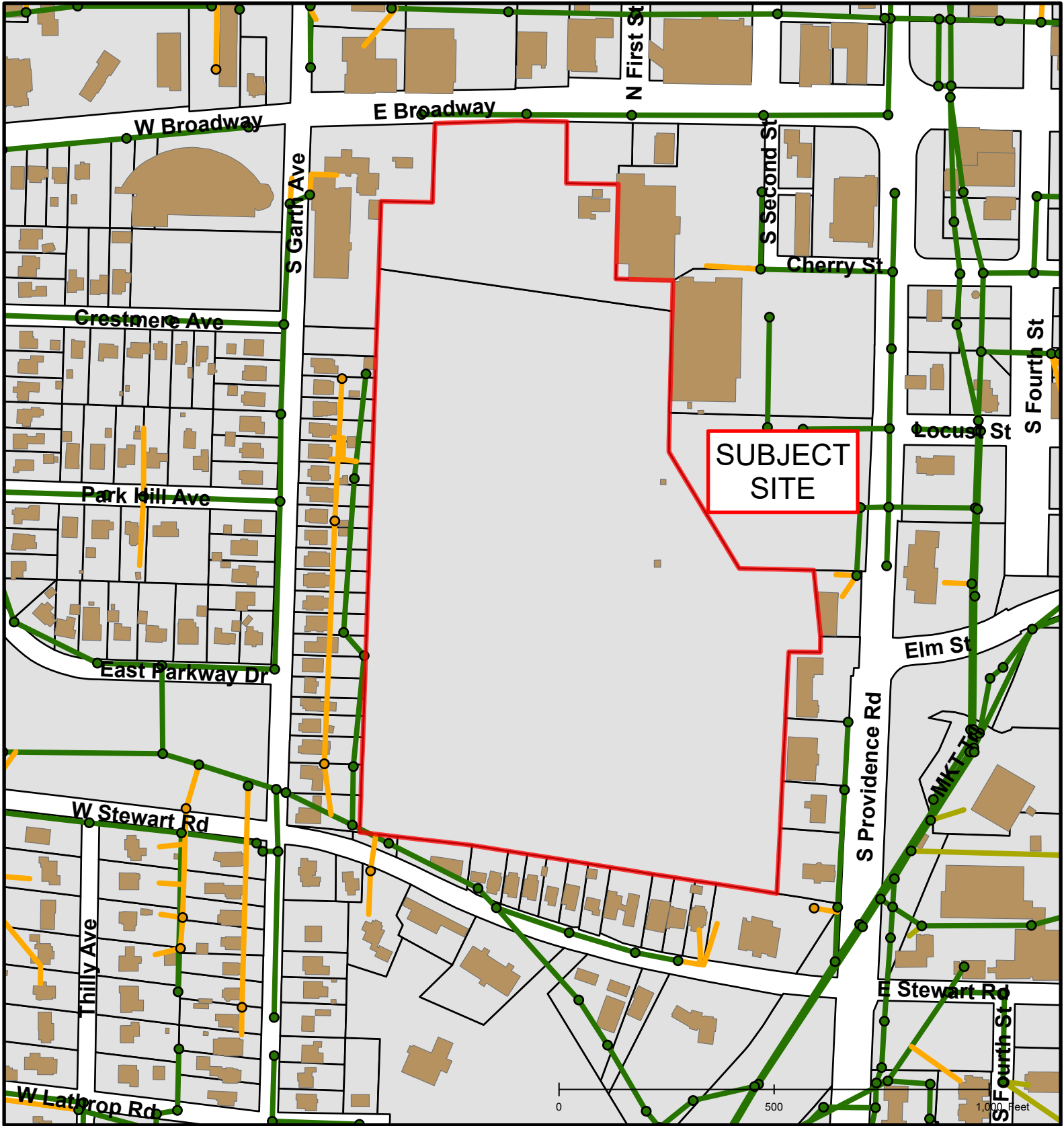
#154-2020: City of Columbia Corrective C-2 Rezoning (30 E. Broadway)



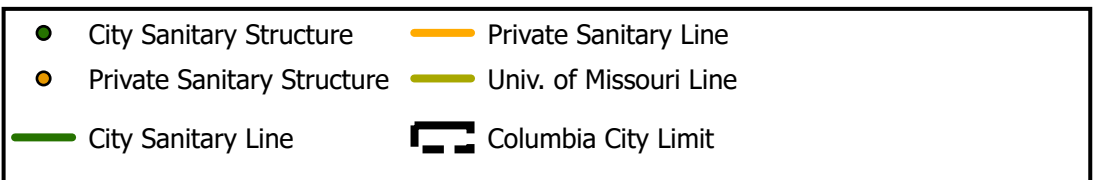


#154-2020: City of Columbia Corrective C-2 Rezoning (30 E. Broadway)





#154-2020: City of Columbia Corrective C-2 Rezoning (30 E. Broadway)



Created by The City of Columbia - Community Development Department

Parcel Data Source: Boone County Assessor

2017 Imagery: Boone County Assessor's Office

Hillshade Data: Boone County GIS