

NO ROOM FOR UDC 6' PARKING BUFFER

NO ROOM FOR 22' - 5.3' TALL RET. WALL

NO ROOM FOR UDC 6' PARKING BUFFER

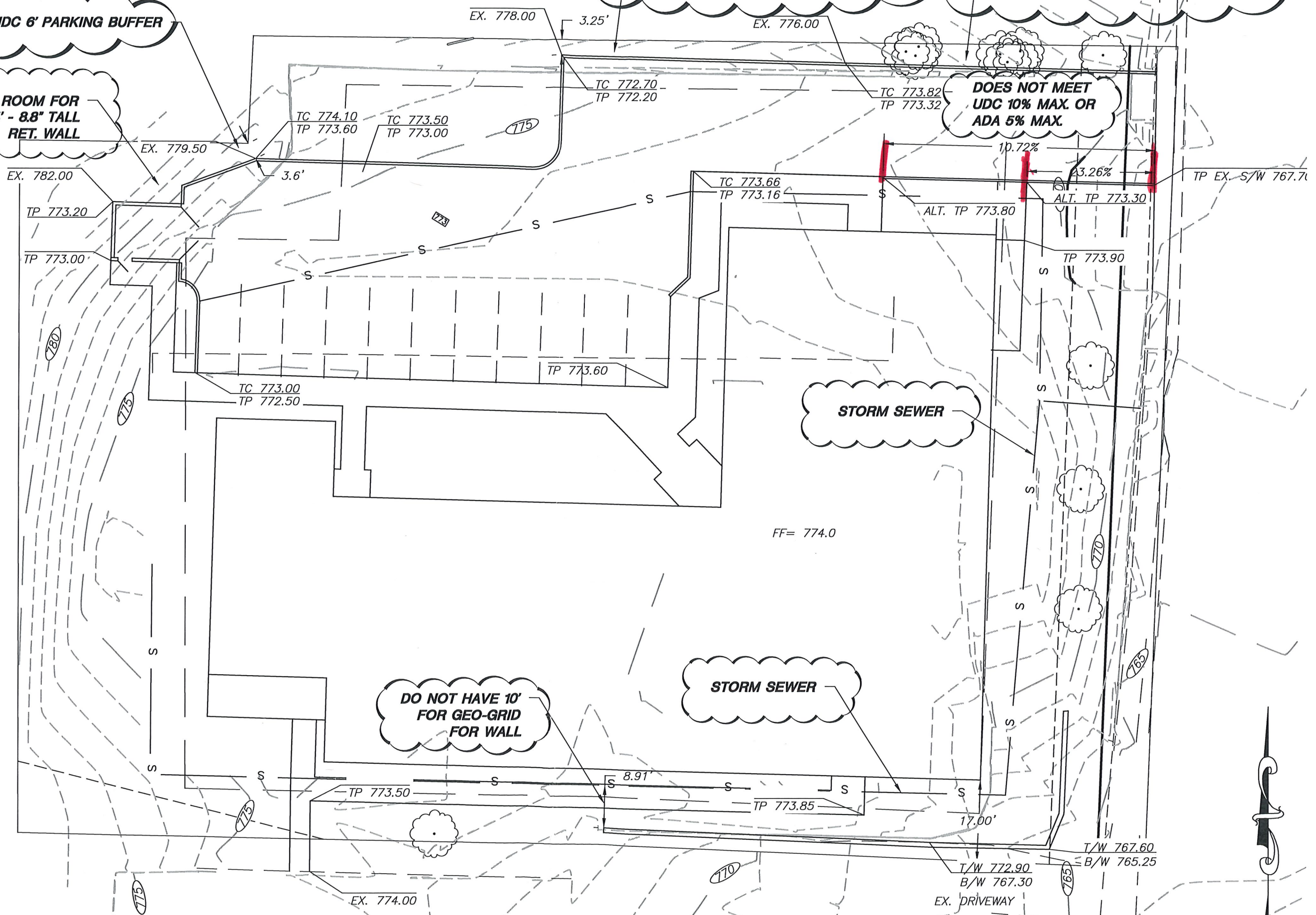
NO ROOM FOR 5.4' - 8.8' TALL RET. WALL

DOES NOT MEET UDC 10% MAX. OR ADA 5% MAX.

DO NOT HAVE 10' FOR GEO-GRID FOR WALL

STORM SEWER

STORM SEWER



FREEDOM HOUSE
1" = 20'