

#17-210: Kitty Hawk Manor, Plat No. 7 Final Plat

	Roads		Columbia City Limit
	City Zoning		CityViewparcels
	Parcels		

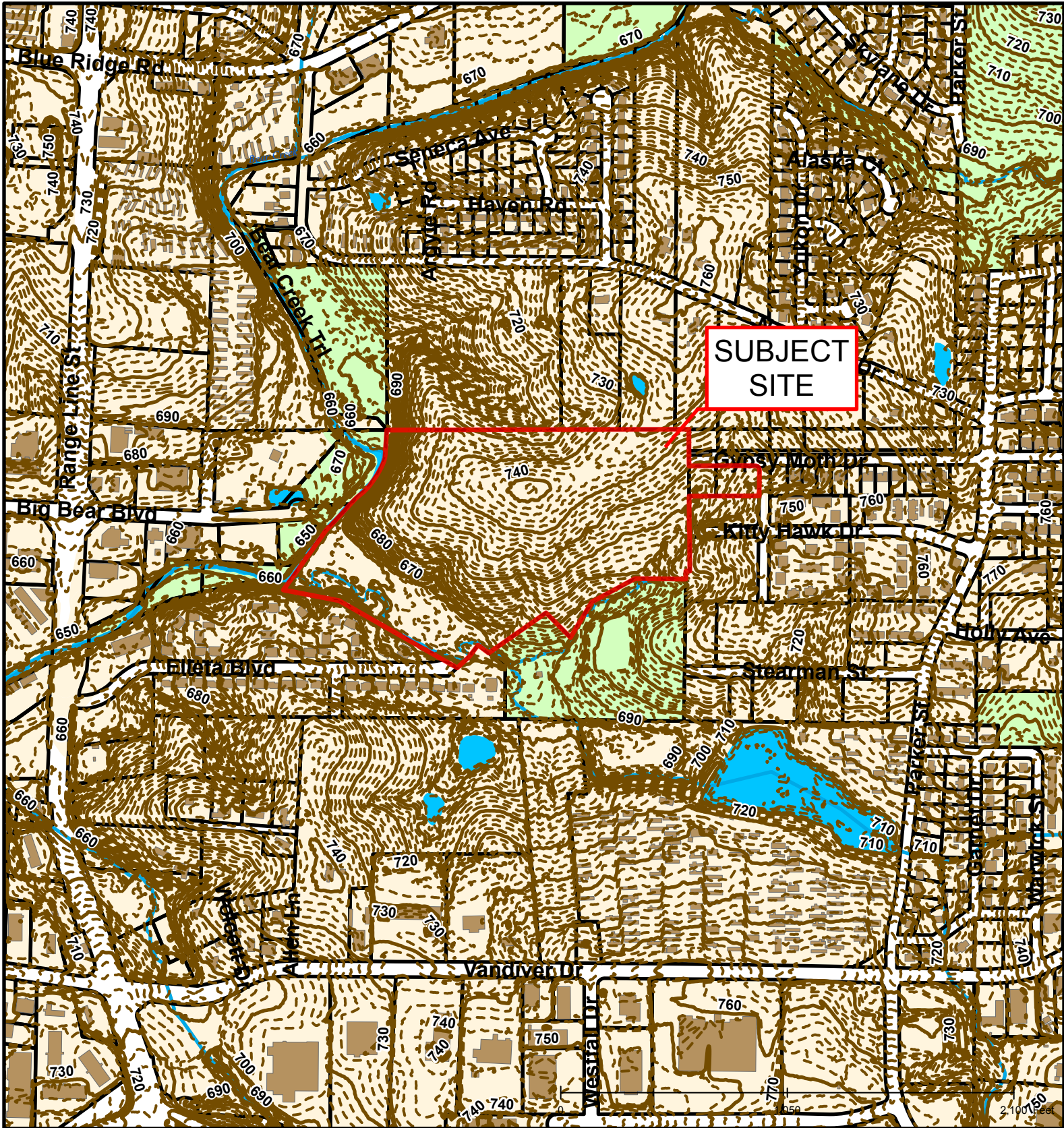


Created by The City of Columbia - Community Development Department







Parcel Data Source: Boone County Assessor

2015 Imagery: Boone County Assessor's Office

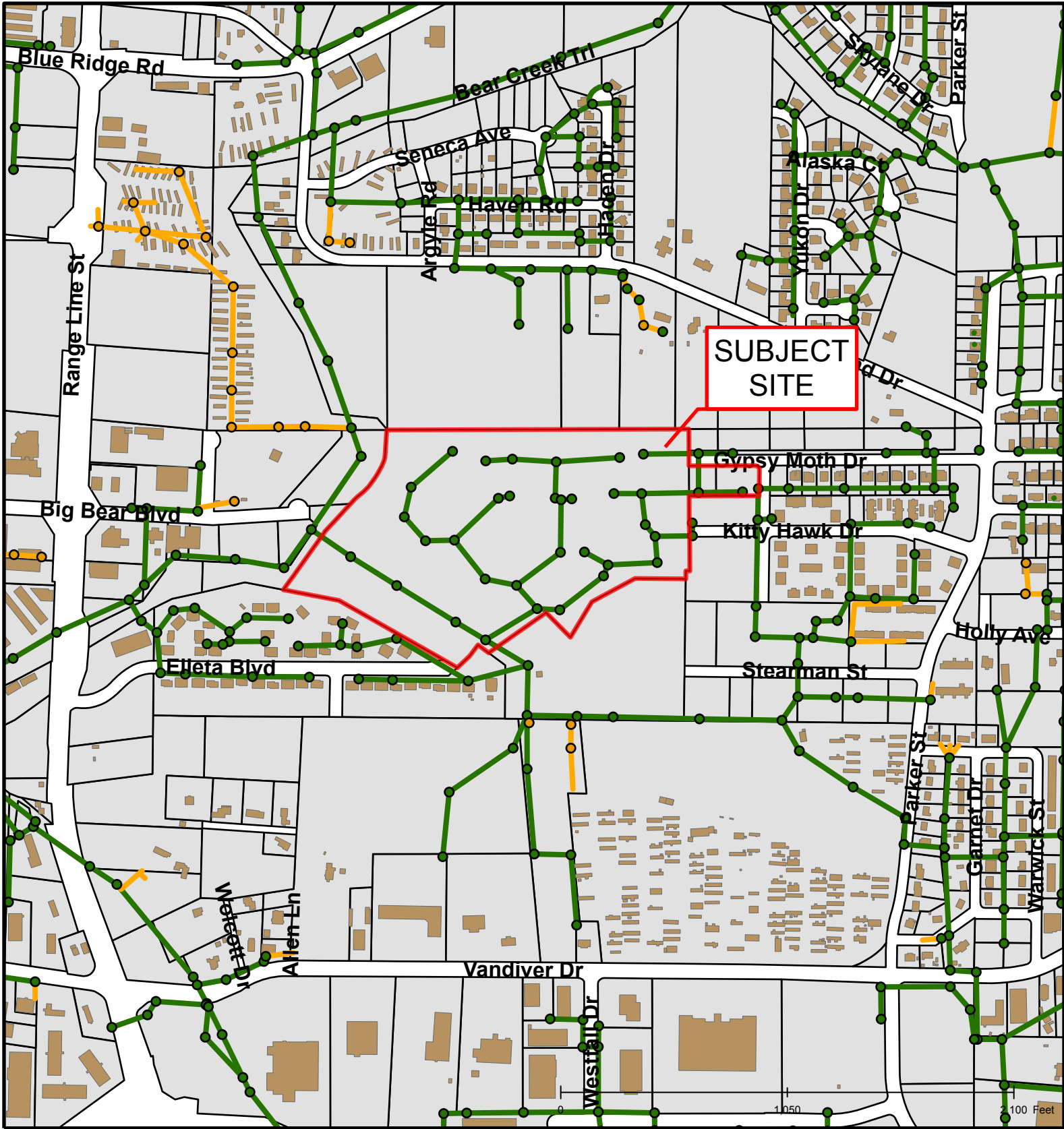
Hillshade Data: Boone County GIS Office



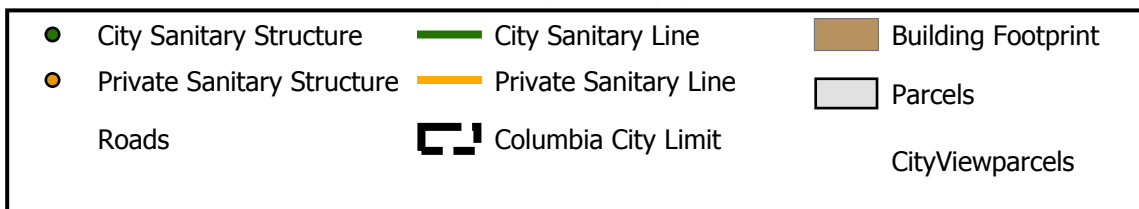
#17-210: Kitty Hawk Manor, Plat No. 7 Final Plat

	Roads		Stream
	Building Footprint		Streams
	Parcels		Bodies of Water





#17-210: Kitty Hawk Manor, Plat No. 7 Final Plat



Created by The City of Columbia - Community Development Department

Parcel Data Source: Boone County Assessor

2015 Imagery: Boone County Assessor's Office

Hillshade Data: Boone County GIS Office