

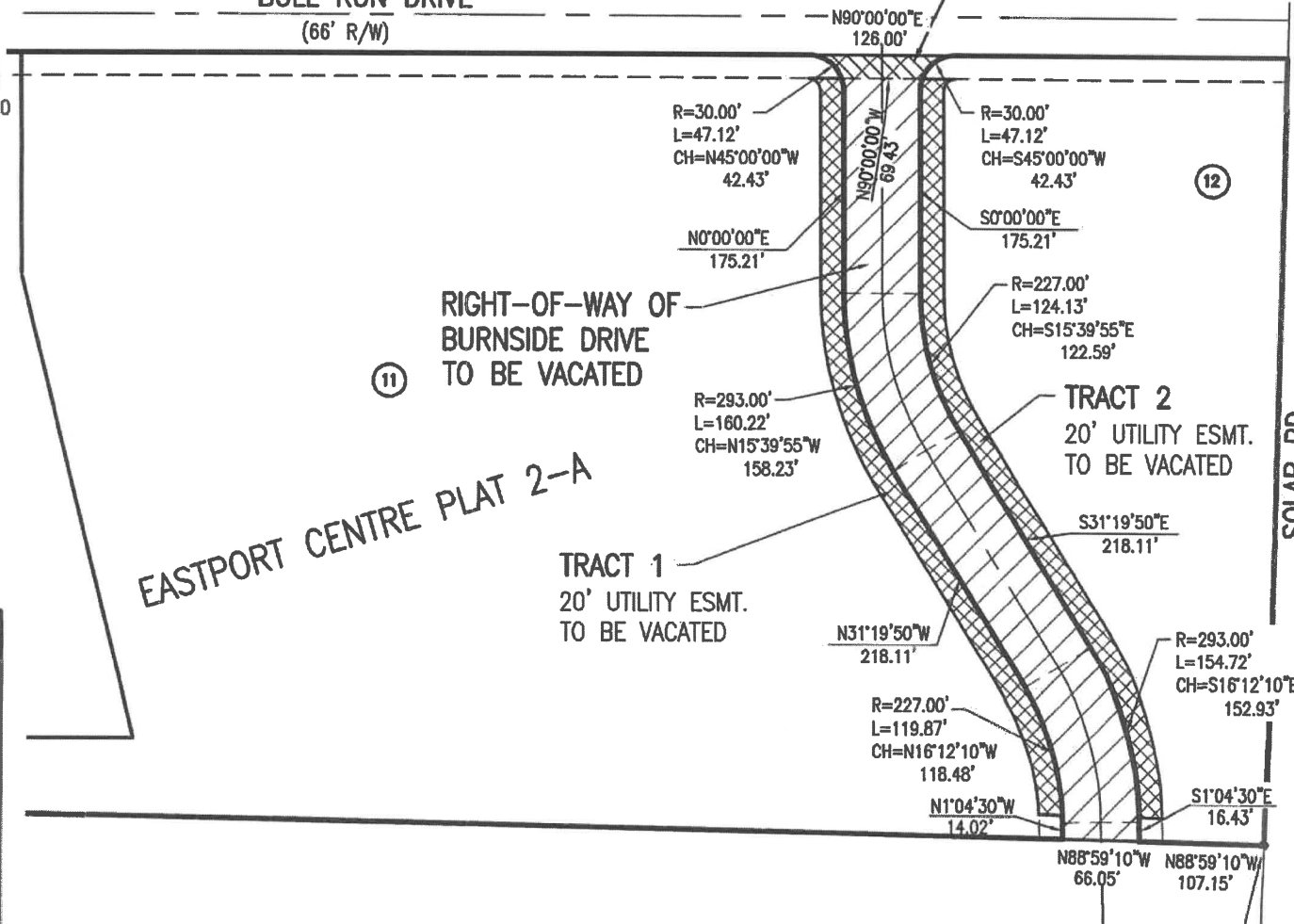
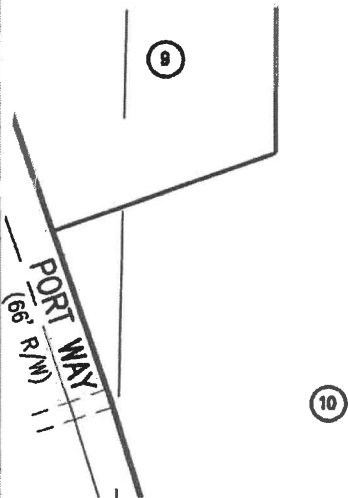
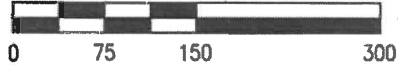
VACATION DISPLAY  
EASTPORT CENTRE PLAT 2-A

5710 BULL RUN DR.  
IN SECTION 10, TOWNSHIP 48 NORTH, RANGE 12 WEST,  
COLUMBIA, BOONE COUNTY, MISSOURI

20' STRIP FOR  
UTILITY EASEMENT BY  
SEPARATE DOCUMENT

BULL RUN DRIVE  
(66' R/W)

SCALE: 1" = 150'



EASTPORT CENTRE PLAT 2-A

CANAVERAL DRIVE  
(50' R/W)

EAST 1/4 CORNER  
SECTION 10-48-12



**ALLSTATE  
CONSULTANTS**

3312 LEMONE INDUSTRIAL BLVD.  
COLUMBIA, MO 65201  
(573) 875-8799

ALLSTATE CONSULTANTS LLC  
MO PROFESSIONAL LAND SURVEYING  
CERTIFICATE OF AUTHORITY #2007000167