

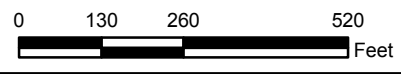


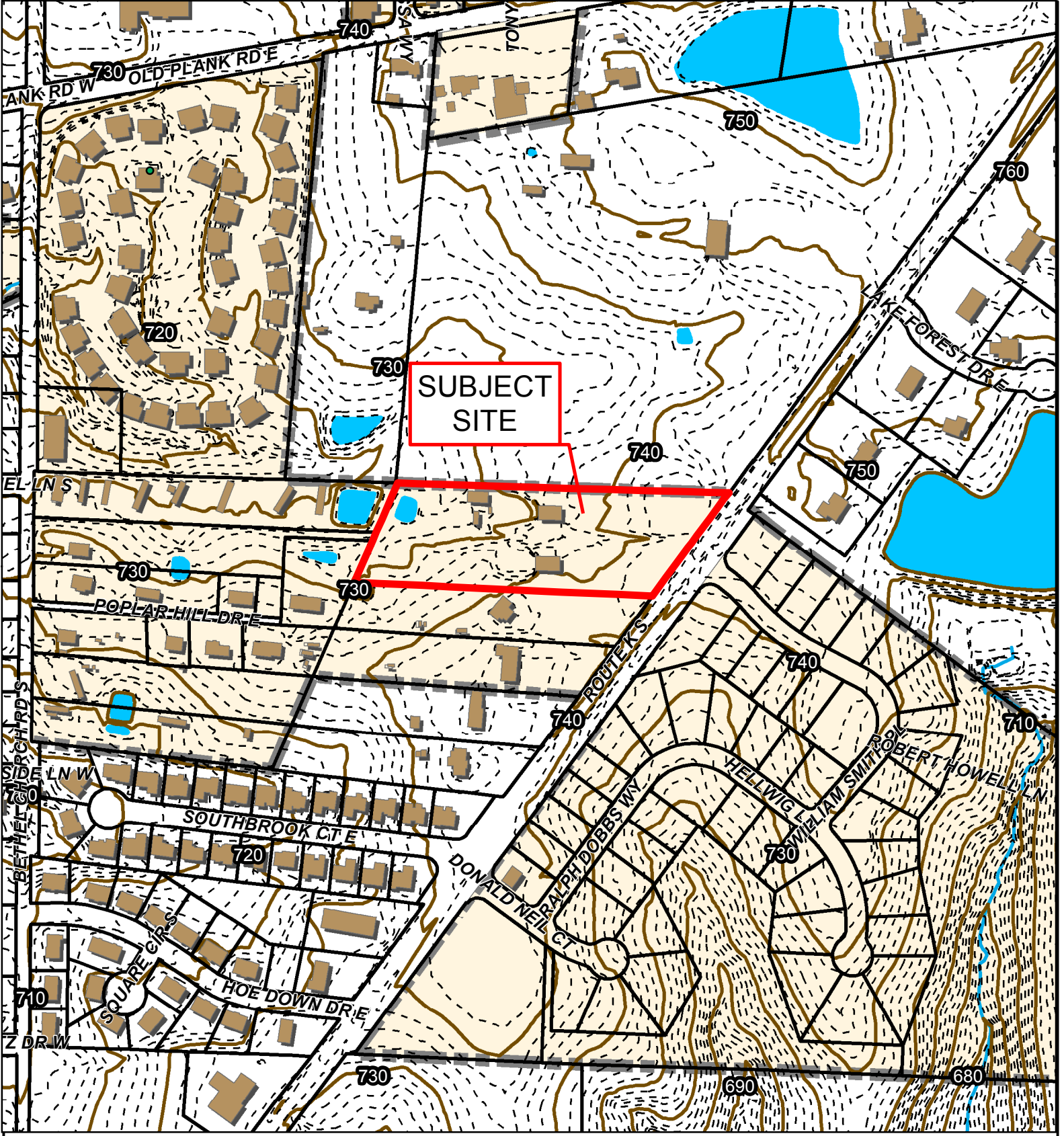
2015 Orthophoto Source: Boone County Assessor

Case #16-82: Stevens Ridge Subdivision Preliminary Plat



- City of Columbia Zoning
- Boone County Zoning
- Parcels

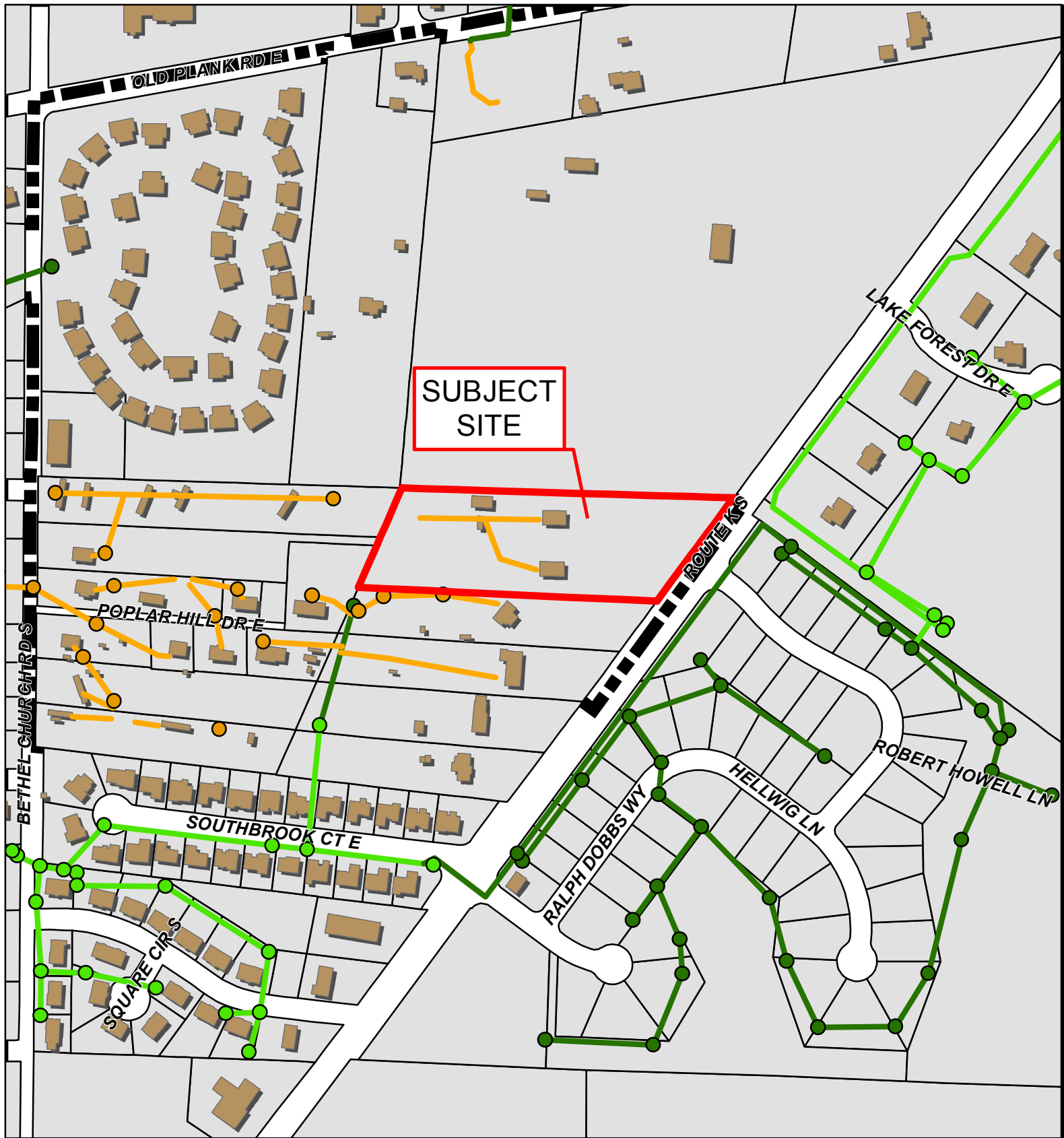




Case #16-82: Stevens Ridge Subdivision Preliminary Plat



- 10 Foot Contour Lines
- Parcels
- Bodies of Water
- 100-Year Flood Plain
- 2 Foot Contour Lines
- Building Footprint



Case #16-82: Stevens Ridge Subdivision Preliminary Plat



- BCRSD
- BCRSD
- Building Footprint
- City Sanitary Structure
- City Sanitary Line
- Private Sanitary Structure
- Private Sanitary Line
- Parcels

