

Revision	By	Date	No.

**HIGHRIDGE - RIDGEMONT - RIDGEFIELD
TRAFFIC CALMING**
Ridgefield Road Plan Sheet - Hulen Drive to Stony Brook Place

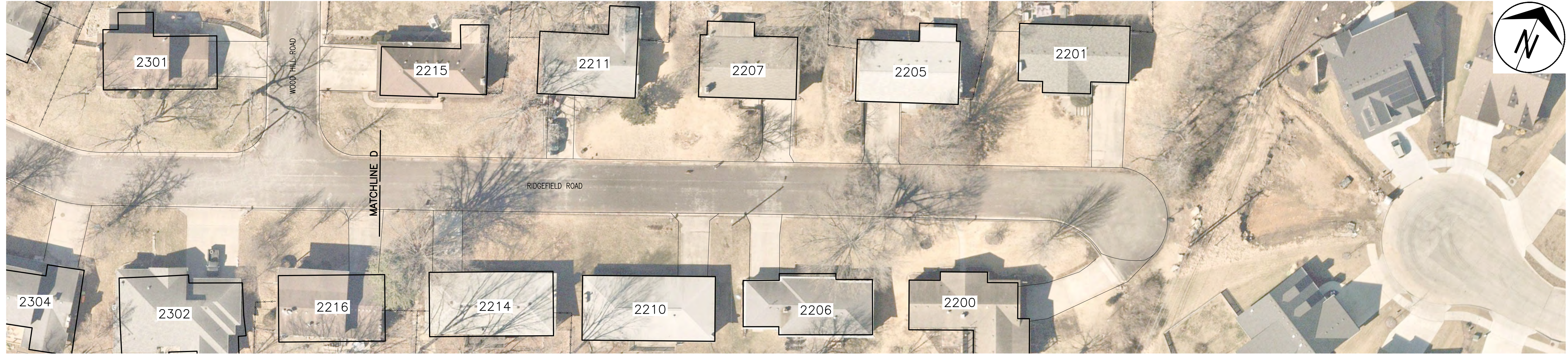
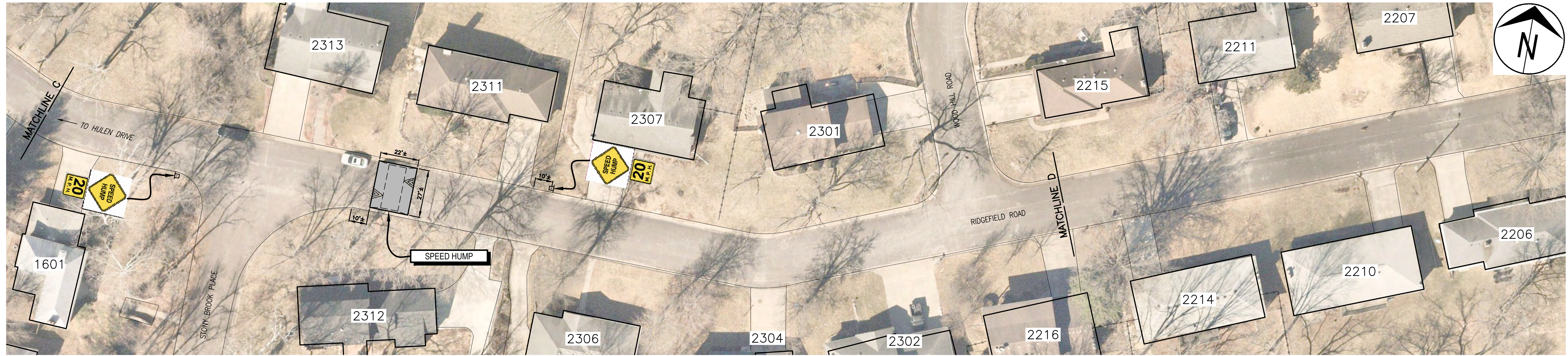
City of Columbia, Missouri
Department of Public Works

Shane Steven Creech
Registered Professional Engineer
PE-2007011061

File No. .
Scale: 1" = 30'
Date: 8/11/2022
Des. A.S.B.
Dwn. A.S.B.
Chk. J.D.R.

o:\cadd\proj\traffic\ridgemont_road - highridge - ridgefield\ridgemont - highridge - ridgefield traffic calming project.dwg

2011 Orthophoto Source: Boone County Assessor



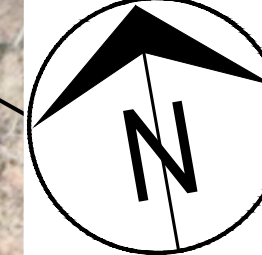
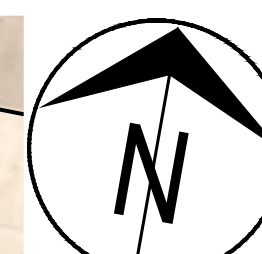
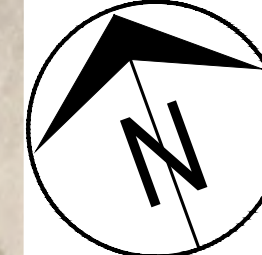
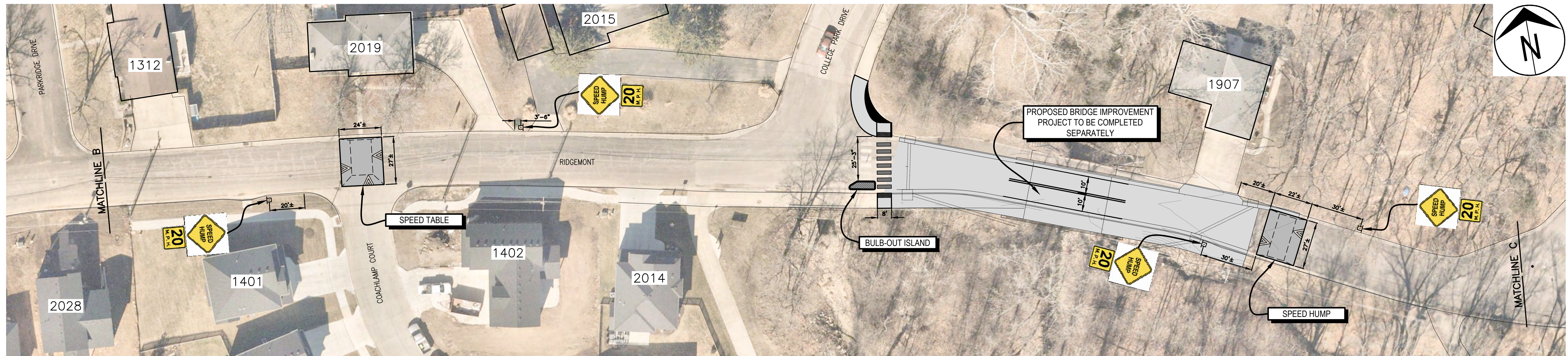
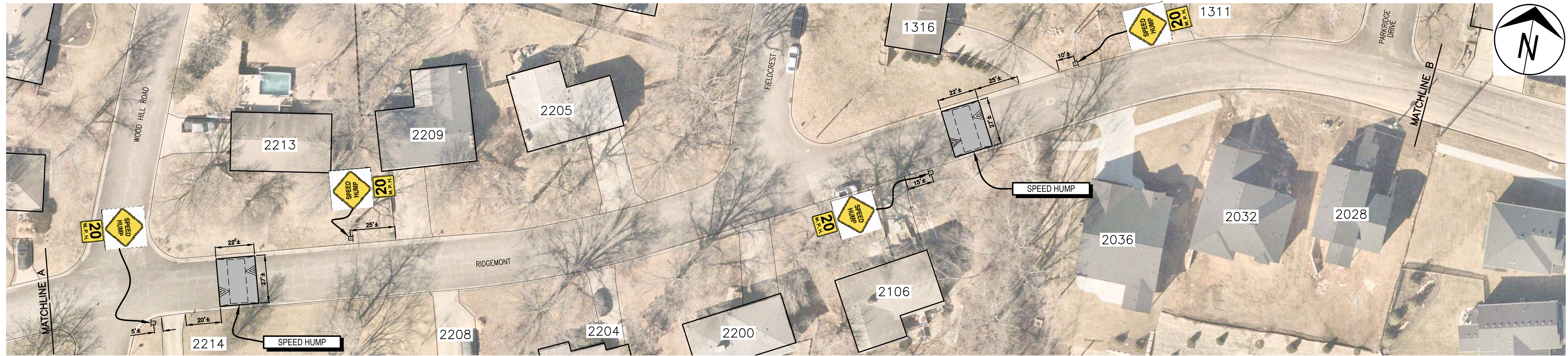
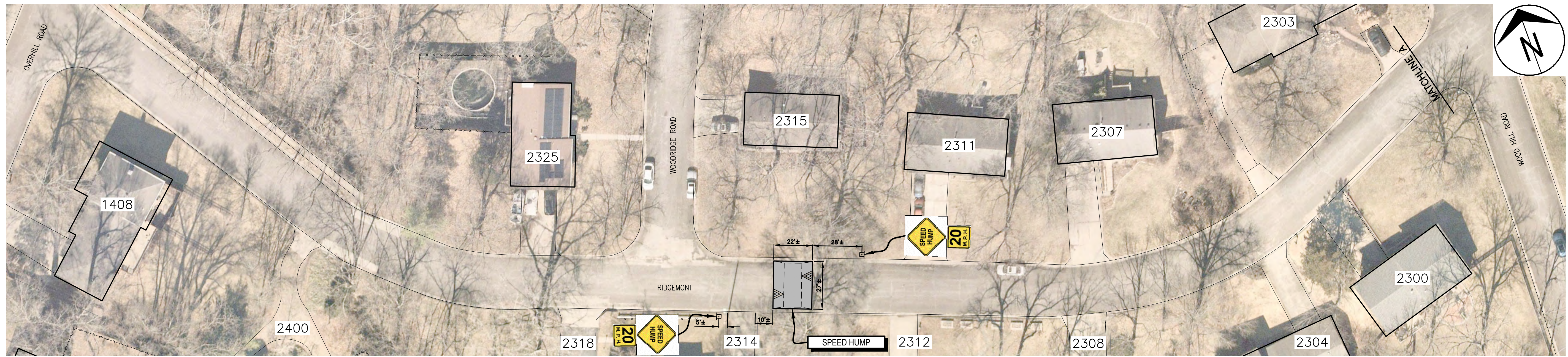
o:\caddpro\traffic\veining\ridgement_road - highridge - ridgefield\ridgement - highridge - ridgefield traffic calming project.dwg

No.	Date	By	Revision

**HIGHRIDGE - RIDGEMONT - RIDGEFIELD
TRAFFIC CALMING**
Ridgefield Road Plan Sheet - Stony Brook Place to Terminus

City of Columbia, Missouri
Department of Public Works

Shane Steven Creech Registered Professional Engineer PE-2007011061
File No. .
Scale: 1" = 30'
Date: 8/11/2022
Des. A.S.B.
Dwn. A.S.B.
Chk. J.D.R.



Revision	By	Date	No.

**HIGHRIDGE - RIDGEMONT - RIDGEFIELD
TRAFFIC CALMING**
Ridgmont Plan Sheet - Overhill Road to Highridge Drive

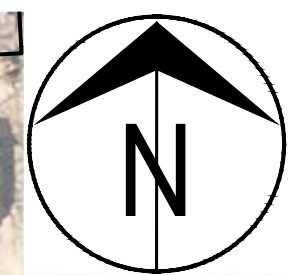
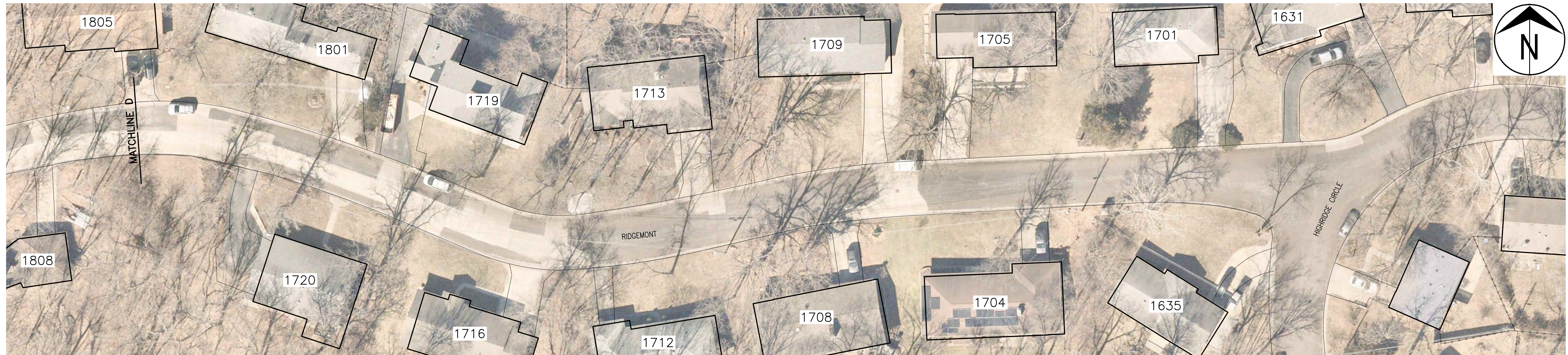
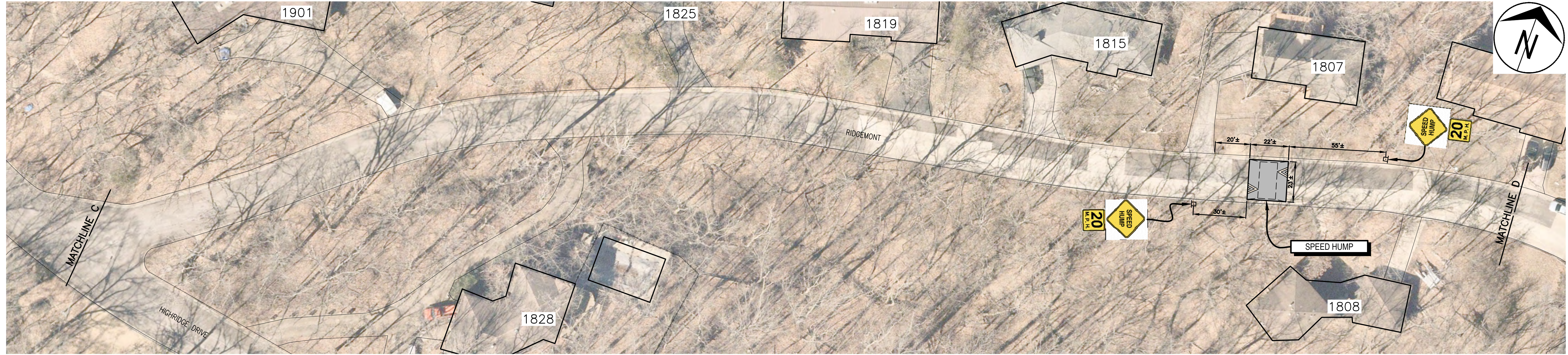
City of Columbia, Missouri
Department of Public Works

Shane Steven Creech
Registered Professional Engineer
PE-2007011061

File No. _____
Scale: 1" = 30'
Date: 11/3/2022
Des. A.S.B.
Dwn. A.S.B.
Chk. J.D.R.

o:\caddpro\work\columbia\ridgmont - highridge - ridgefield\ridgmont - highridge - ridgefield traffic calming project.dwg

2011 Orthophoto Source: Boone County Assessor



No.	Date	By	Revision

**HIGHRIDGE - RIDGEMONT - RIDGEFIELD
TRAFFIC CALMING**
Ridgmont Plan Sheet - Highridge Drive to Highridge Circle

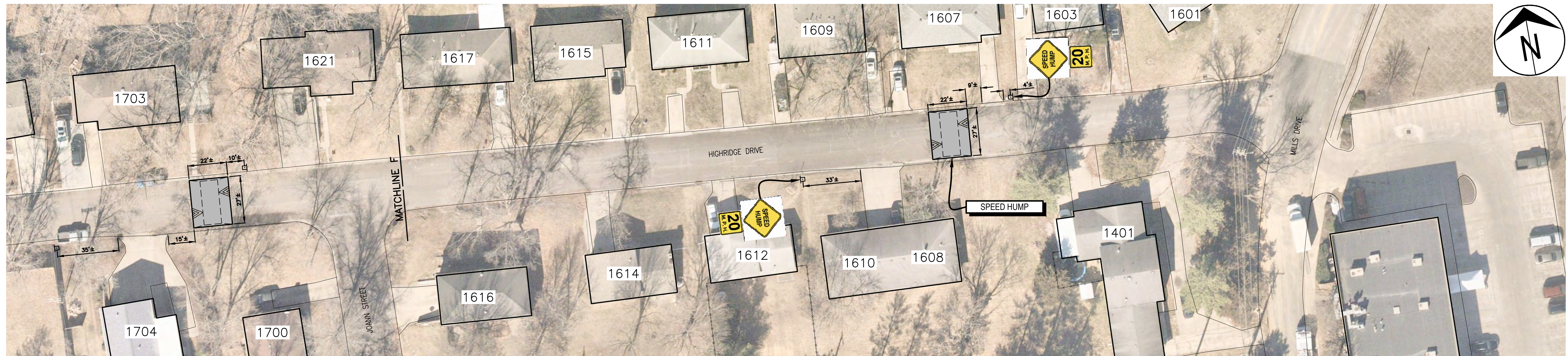
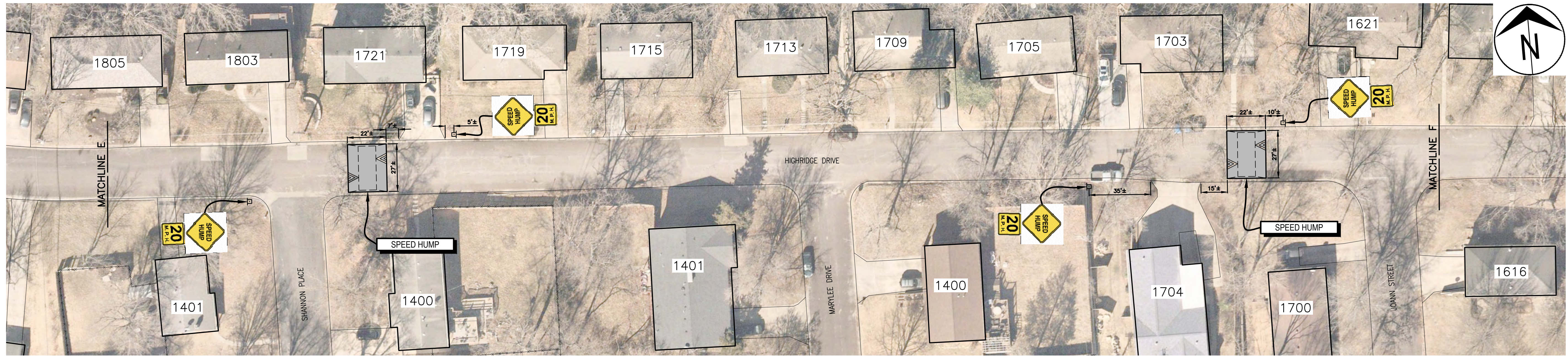
City of Columbia, Missouri
Department of Public Works

Shane Steven Creech
Registered Professional
Engineer
PE-2007011061

File No. .
Scale: 1" = 30'
Date: 8/11/2022
Des. A.S.B.
Dwn. A.S.B.
Chk. J.D.R.

o:\caddpro\traffic\veining\ridgmont_road - highridge - ridgefield\ridgmont - highridge - ridgefield traffic calming project.dwg

2011 Orthophoto Source: Boone County Assessor



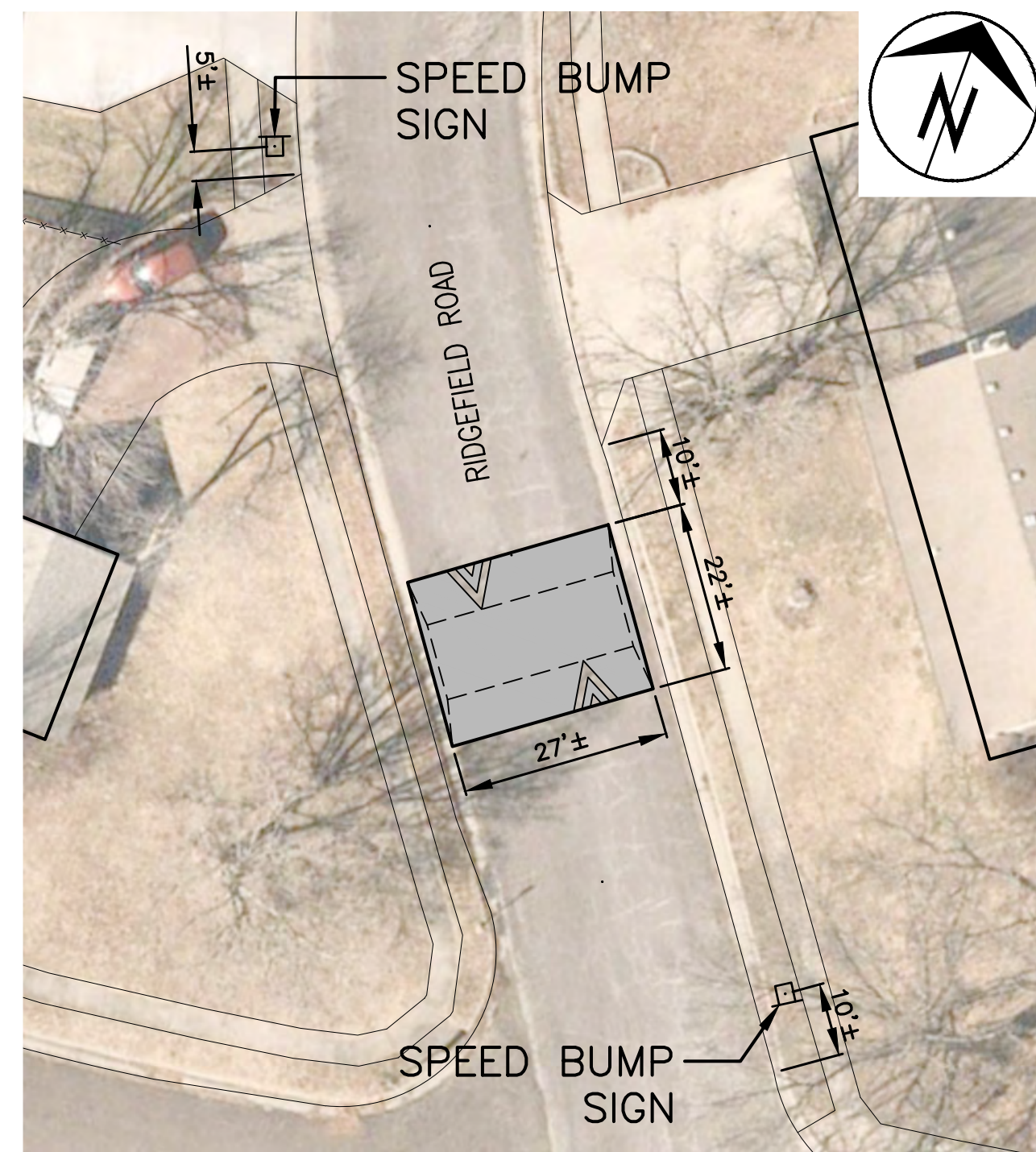
Revision	By	Date	No.

HIGHRIDGE - RIDGEMONT - RIDGEFIELD
TRAFFIC CALMING
 Highridge Drive Plan Sheet

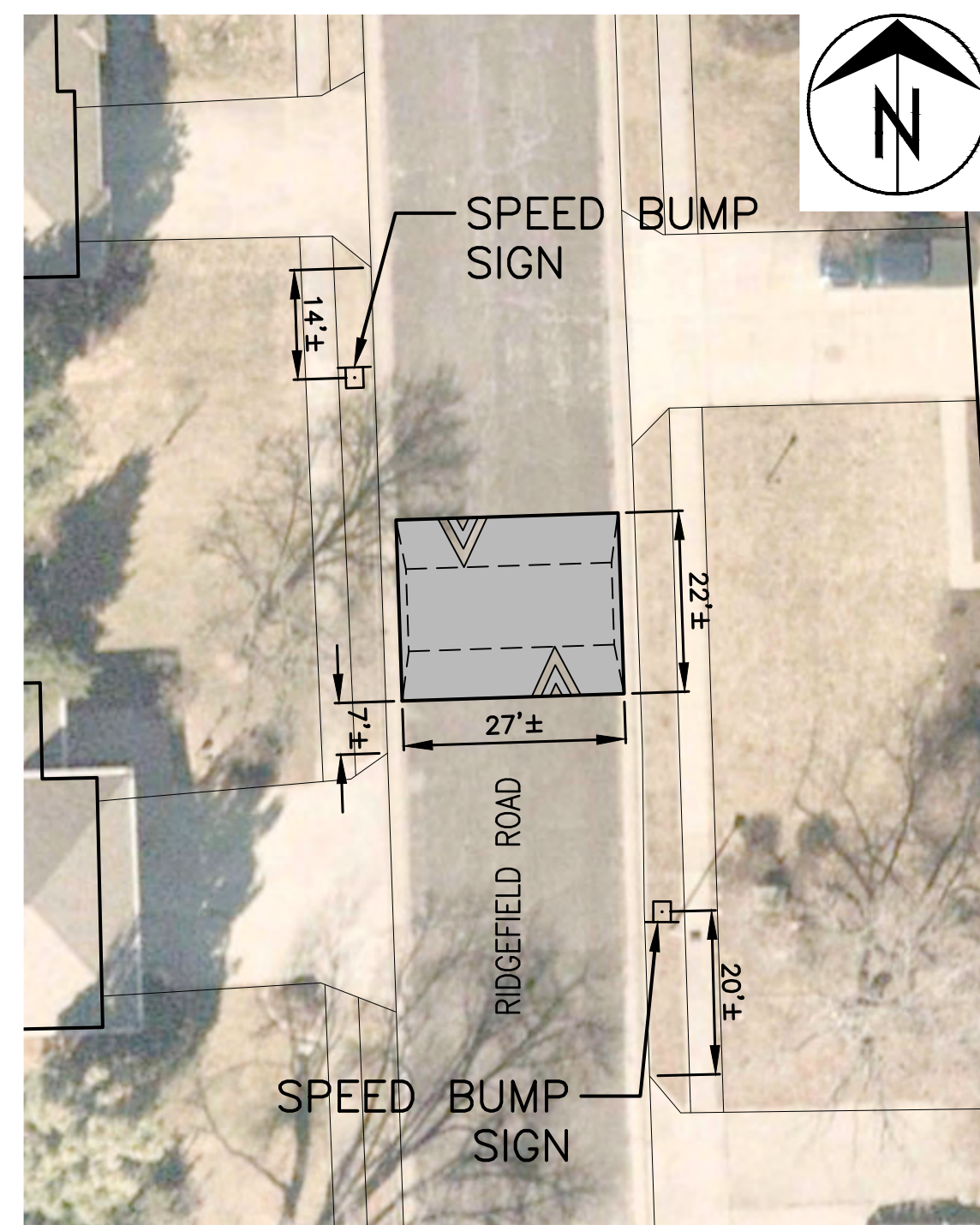
City of Columbia, Missouri
 Department of Public Works

File No.	
Scale:	1" = 30'
Date:	8/11/2022
Des.	A.S.B.
Dwn.	A.S.B.
Chk.	J.D.R.

o:\cadd\proj\traffic\calming\ridgemont_road - highridge - ridgefield\ridgemont - highridge - ridgefield traffic calming project.dwg
 2011 Orthophoto Source: Boone County Assessor



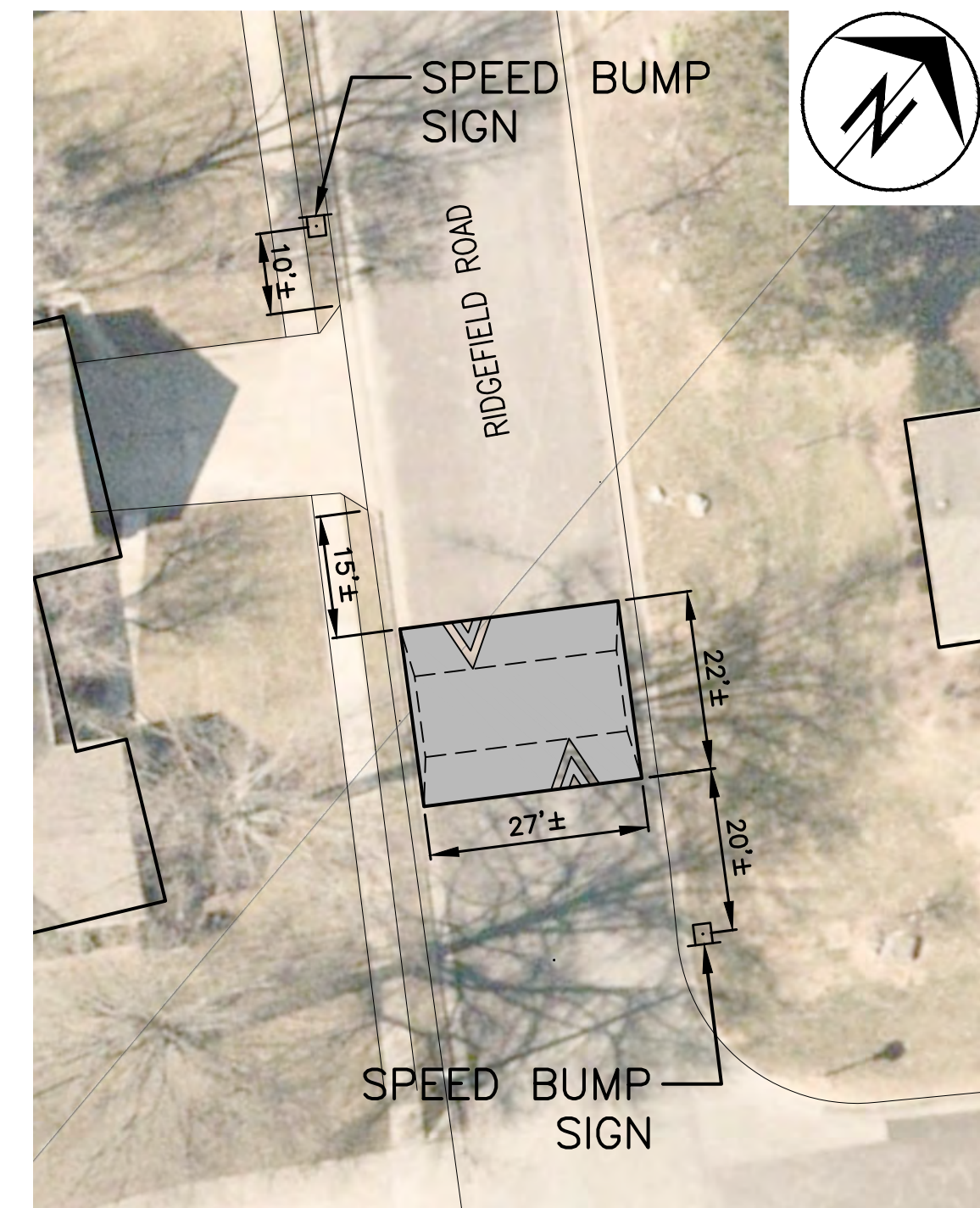
2623 RIDGEFIELD ROAD
1" = 20'



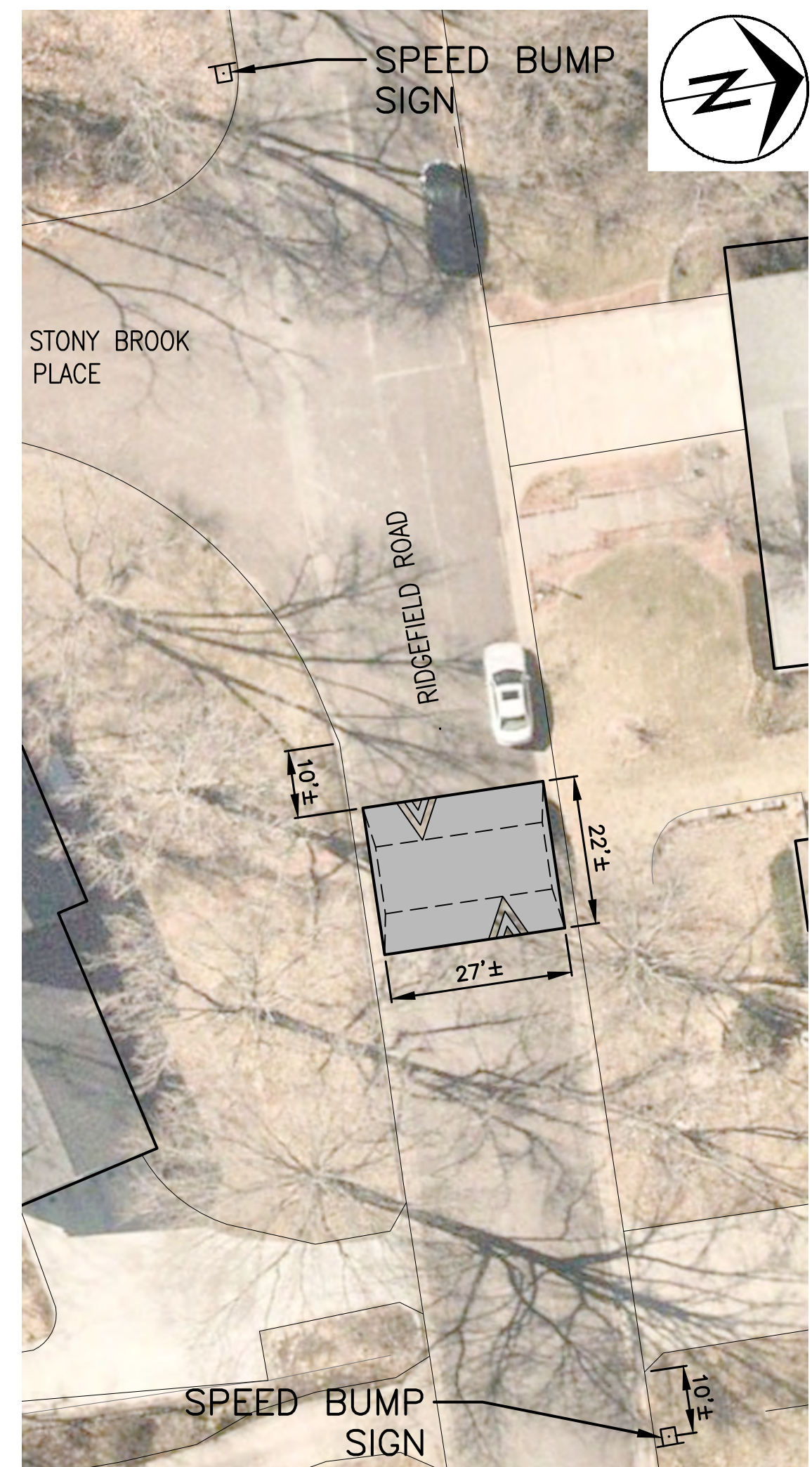
2613 RIDGEFIELD ROAD
1" = 20'



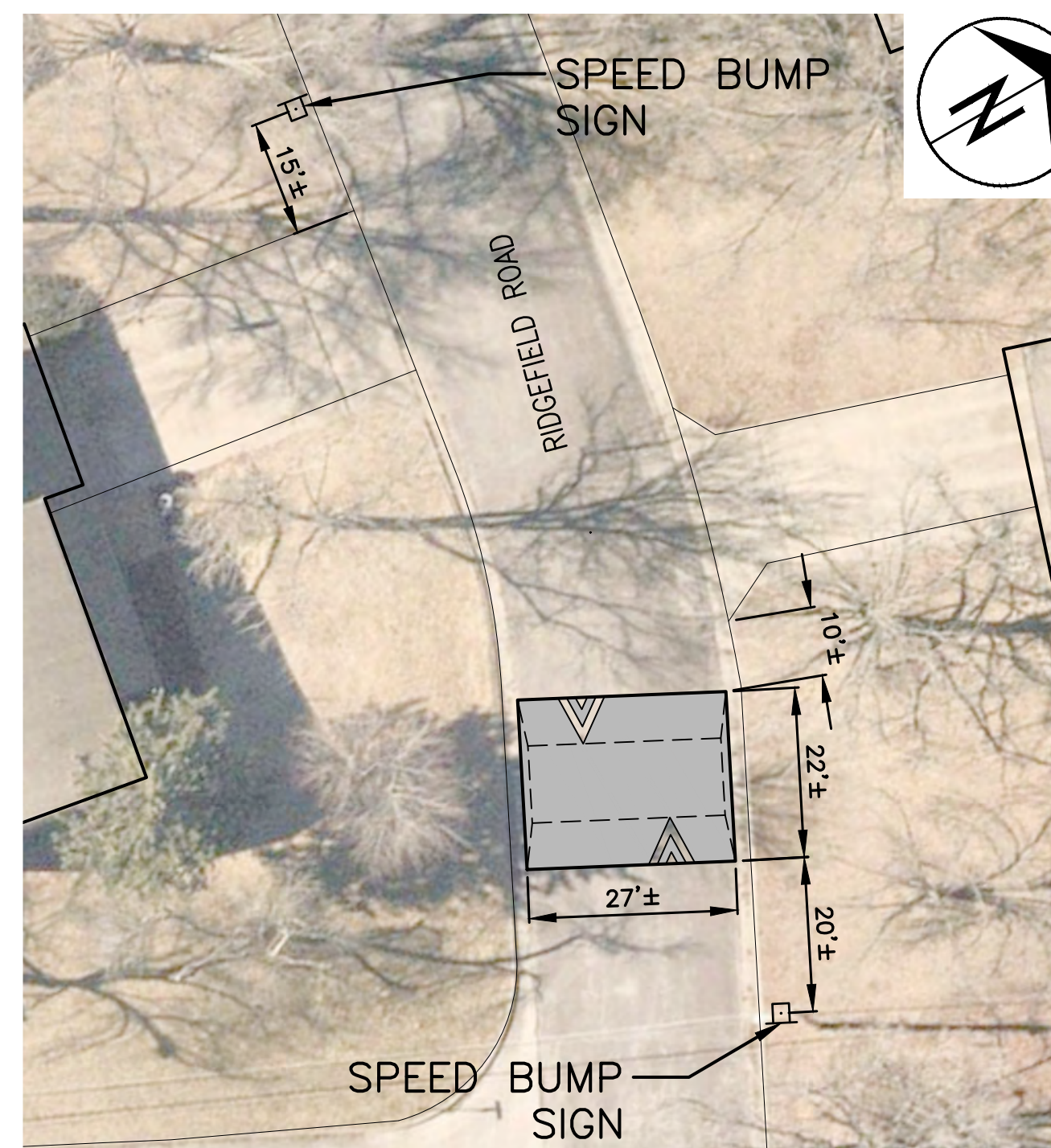
2516 RIDGEFIELD ROAD
1" = 20'



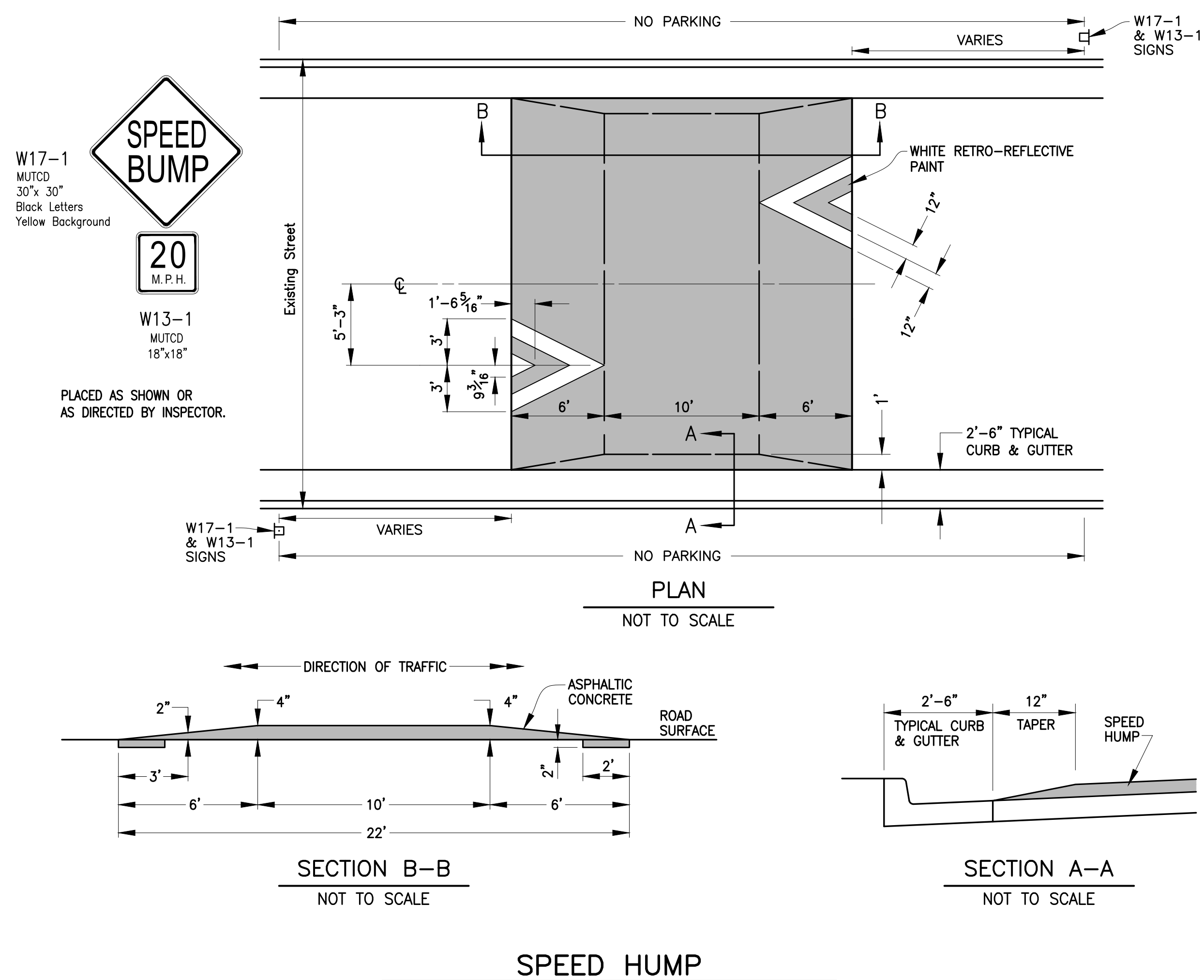
2500 RIDGEFIELD ROAD
1" = 20'



2311 RIDGEFIELD ROAD
1" = 20'



2409 RIDGEFIELD ROAD
1" = 20'



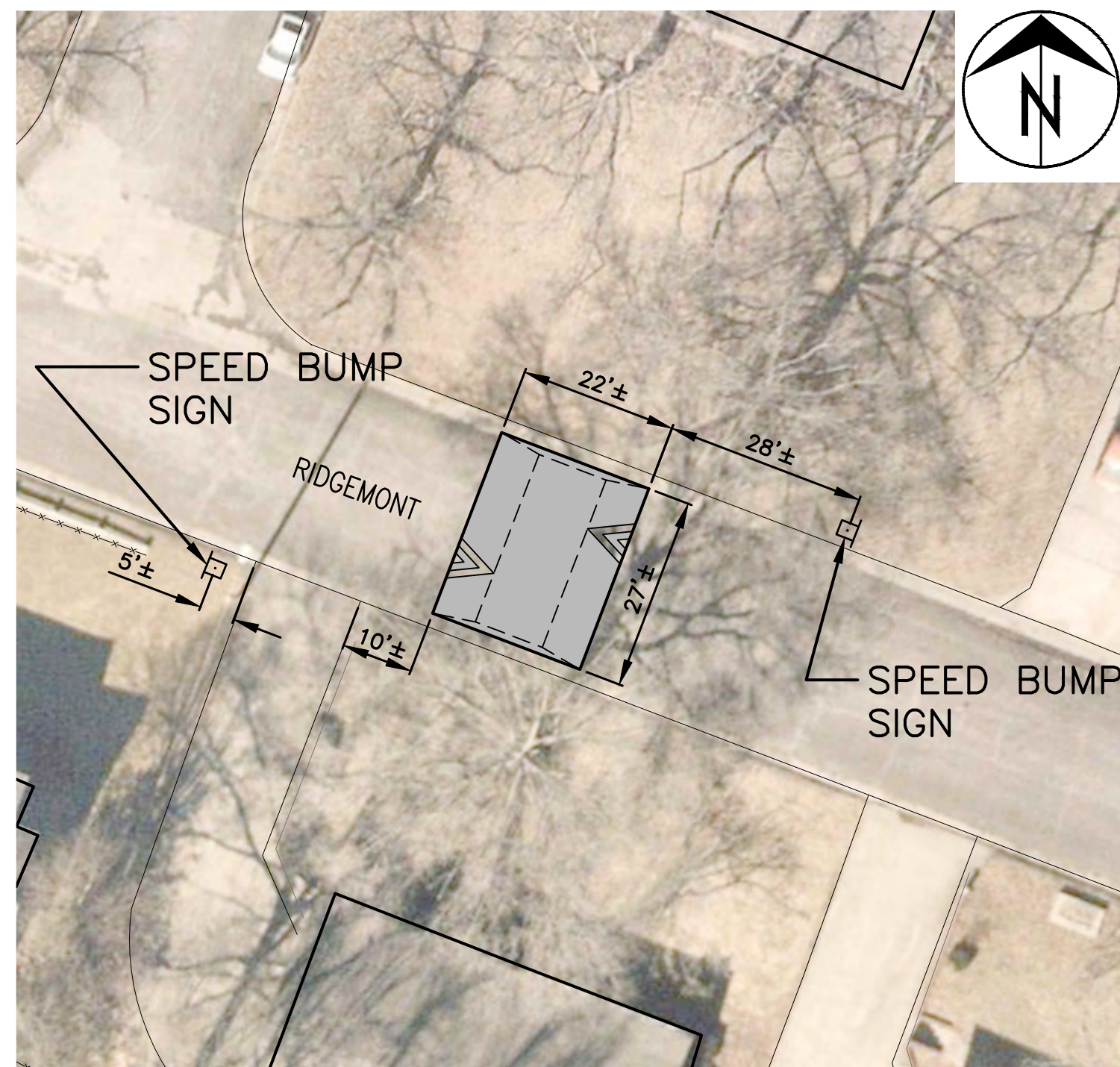
Revision	By	Date	No.

HIGHRIDGE - RIDGEMONT - RIDGEFIELD TRAFFIC CALMING
Ridgefield Road Speed Humps

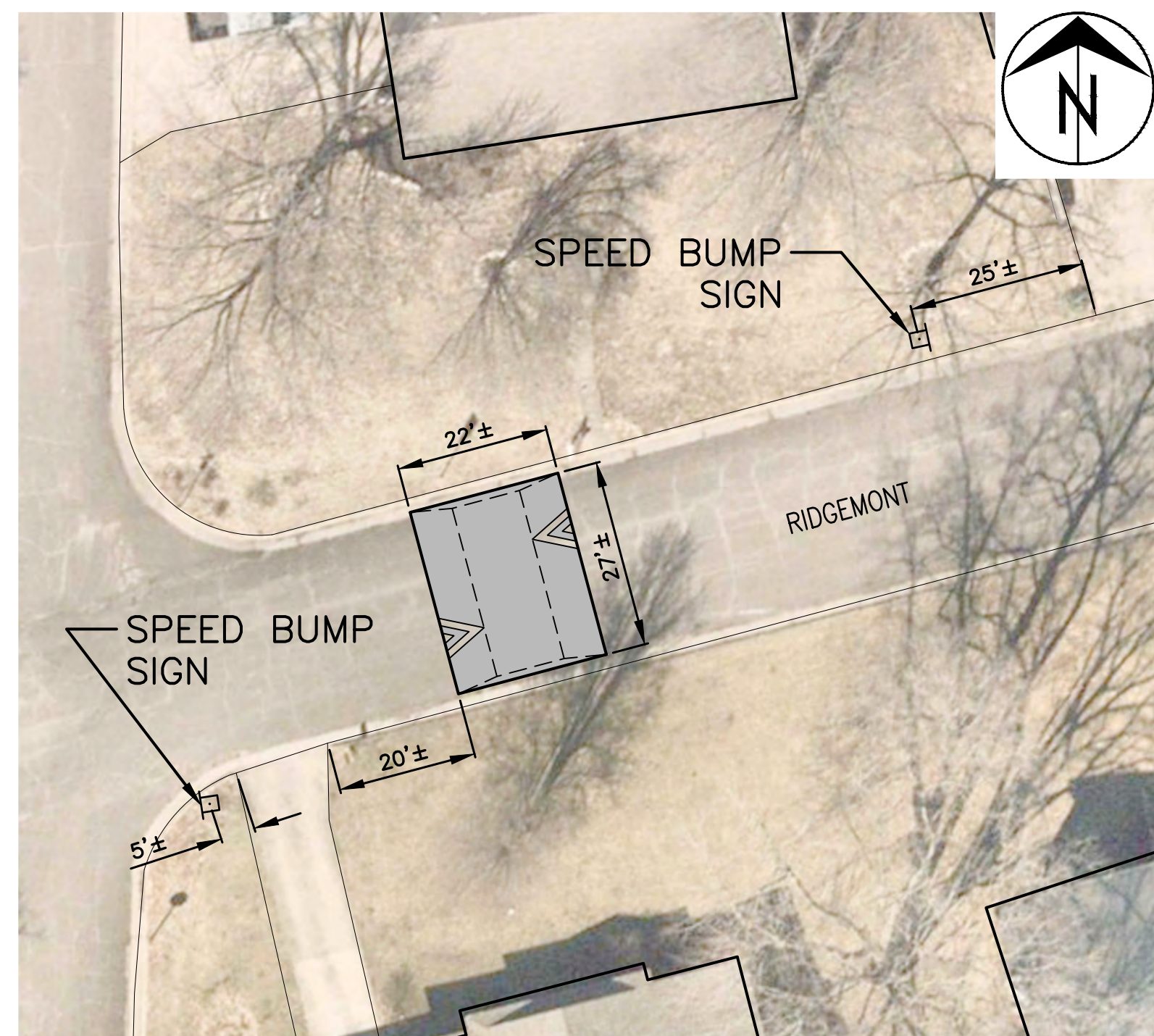
City of Columbia, Missouri
Department of Public Works

Shane Steven Creech
Registered Professional Engineer
PE-2007011061

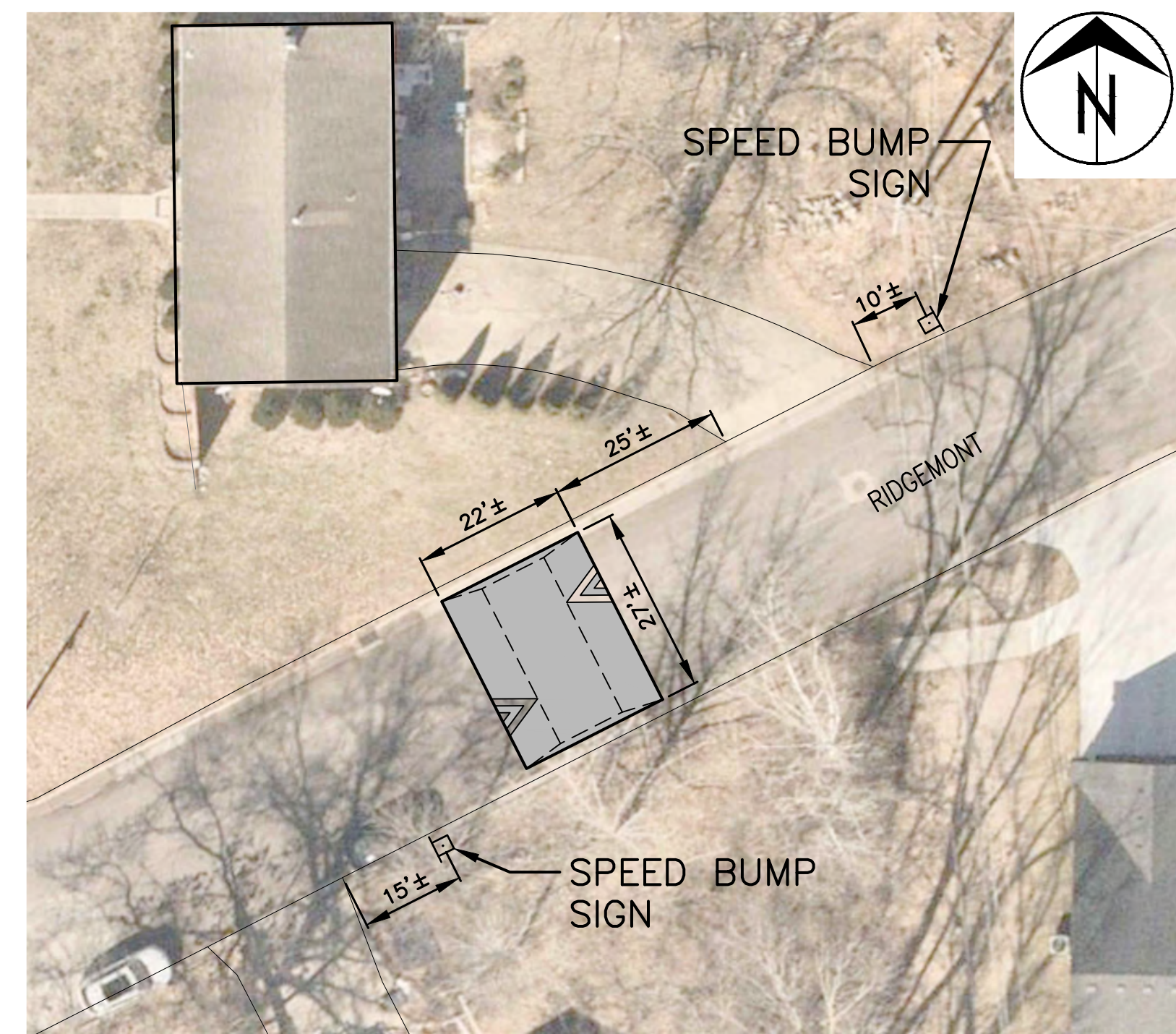
File No. .
Scale: As Shown
Date: 8/11/2022
Des. A.S.B.
Dwn. A.S.B.
Chk. J.D.R.



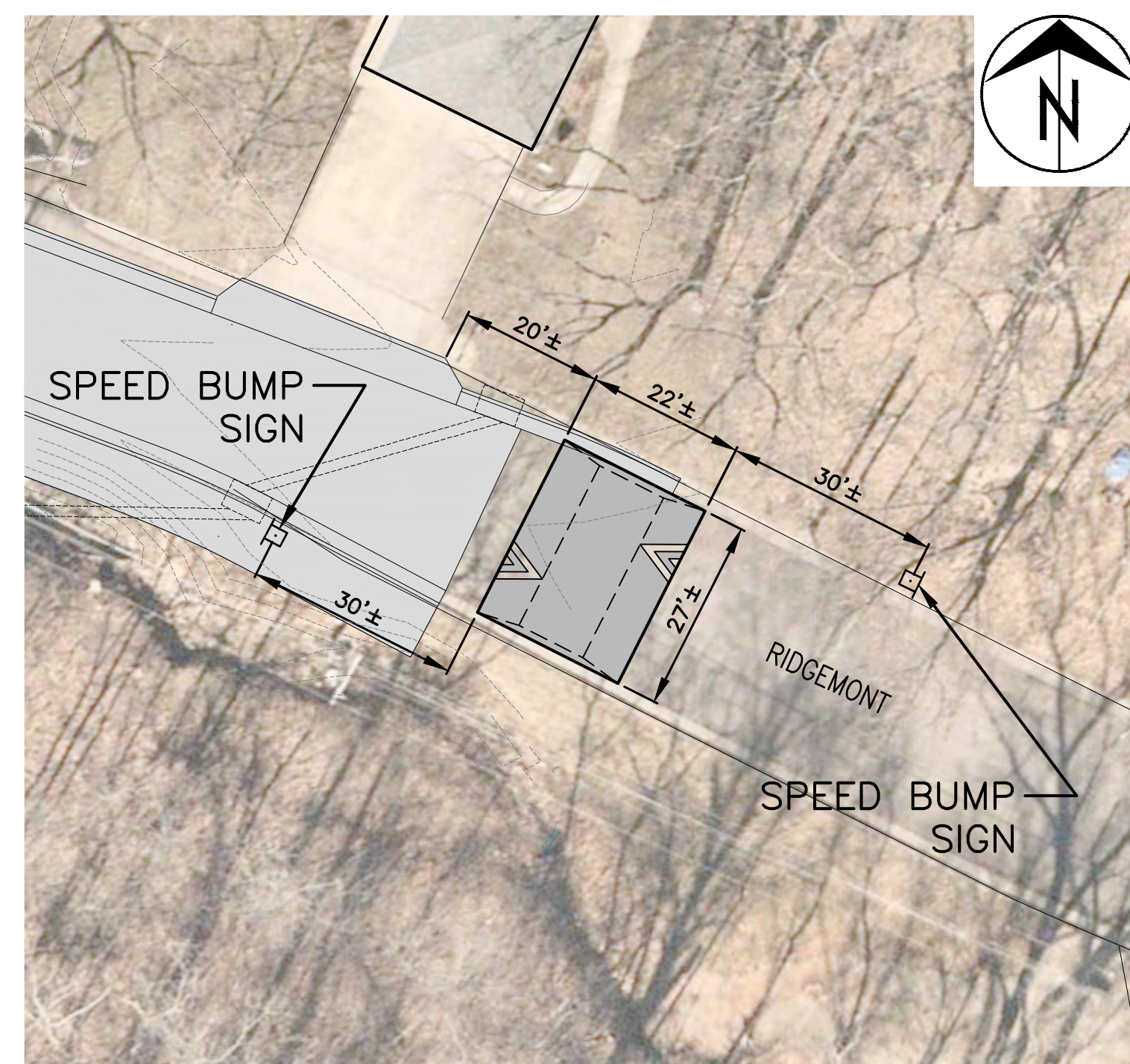
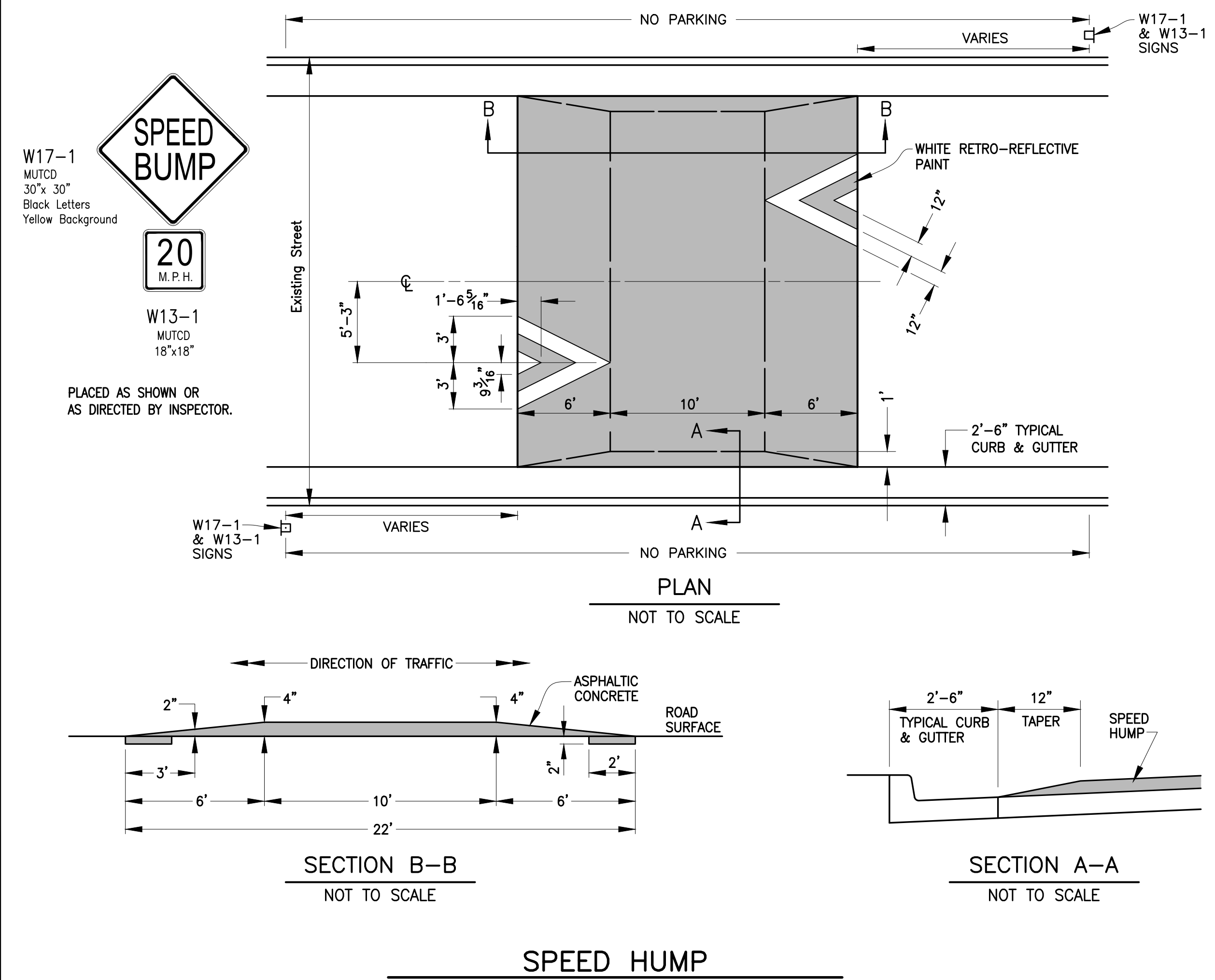
2314 RIDGEMONT
1" = 20'



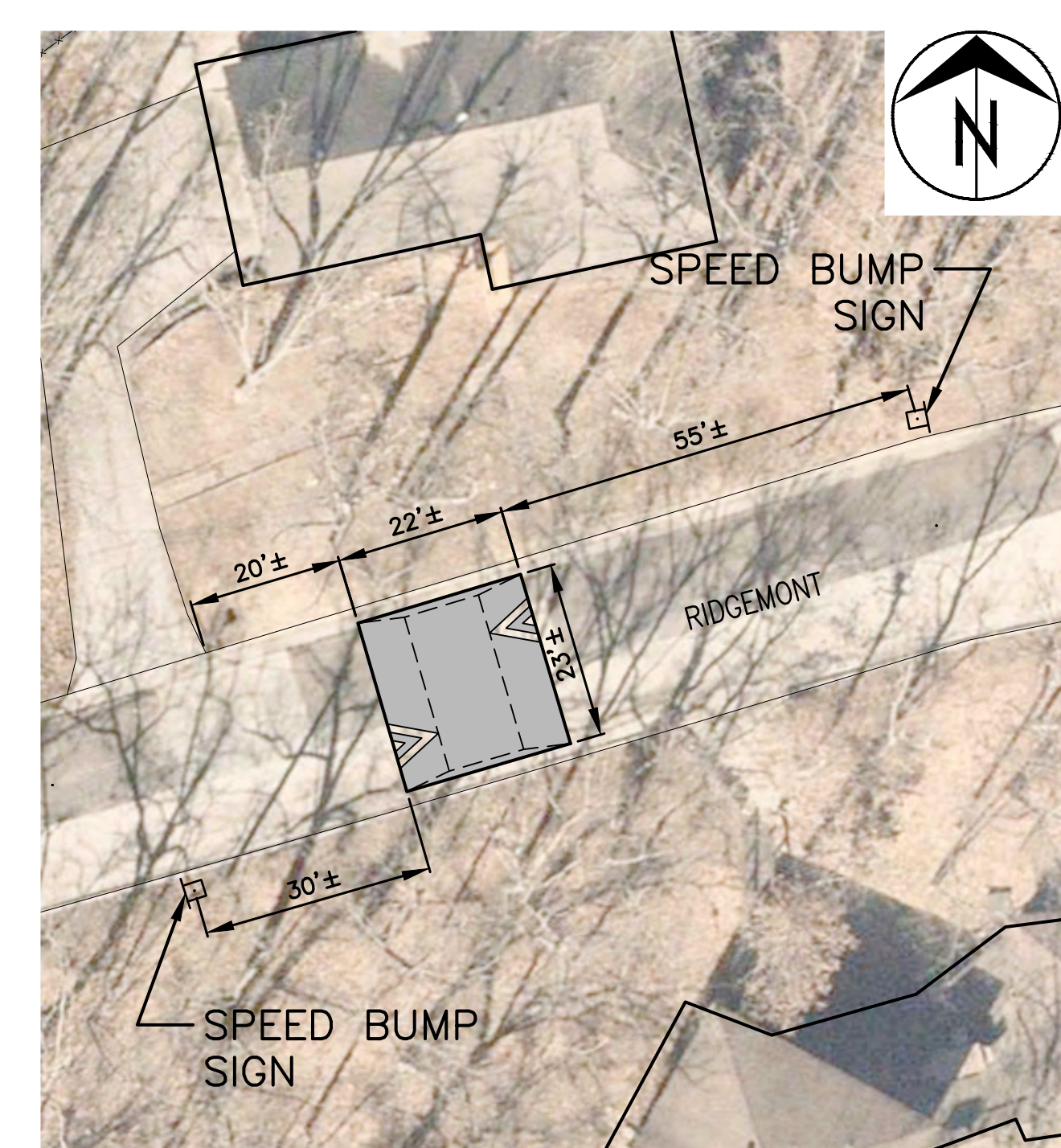
2214 RIDGEMONT
1" = 20'



2106 RIDGEMONT
1" = 20'



1907 RIDGEMONT
1" = 20'



1807 RIDGEMONT
1" = 20'

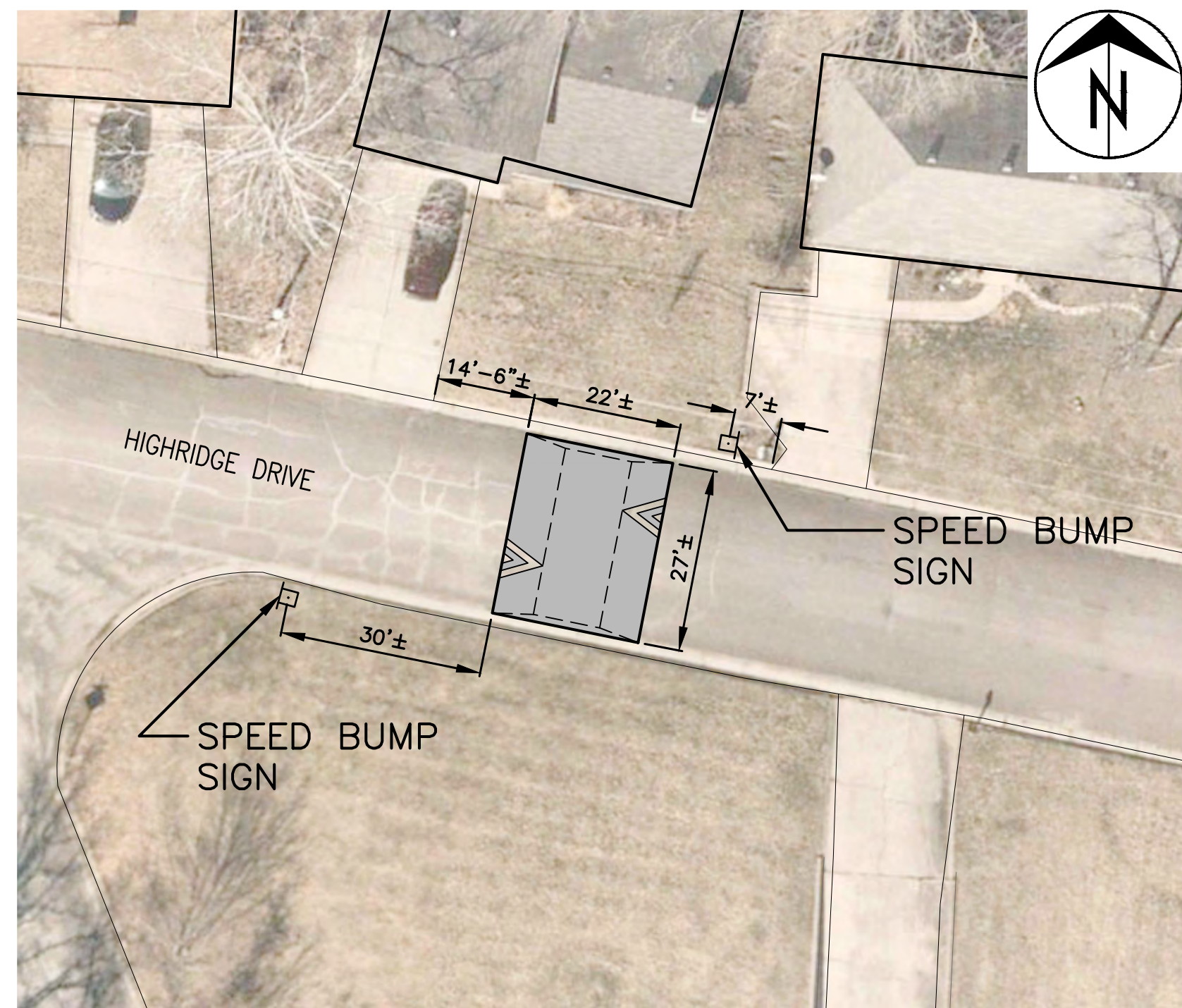
Revision	By	Date	No.

**HIGHRIDGE - RIDGEMONT - RIDGEFIELD
TRAFFIC CALMING**
Ridgemont Speed Humps

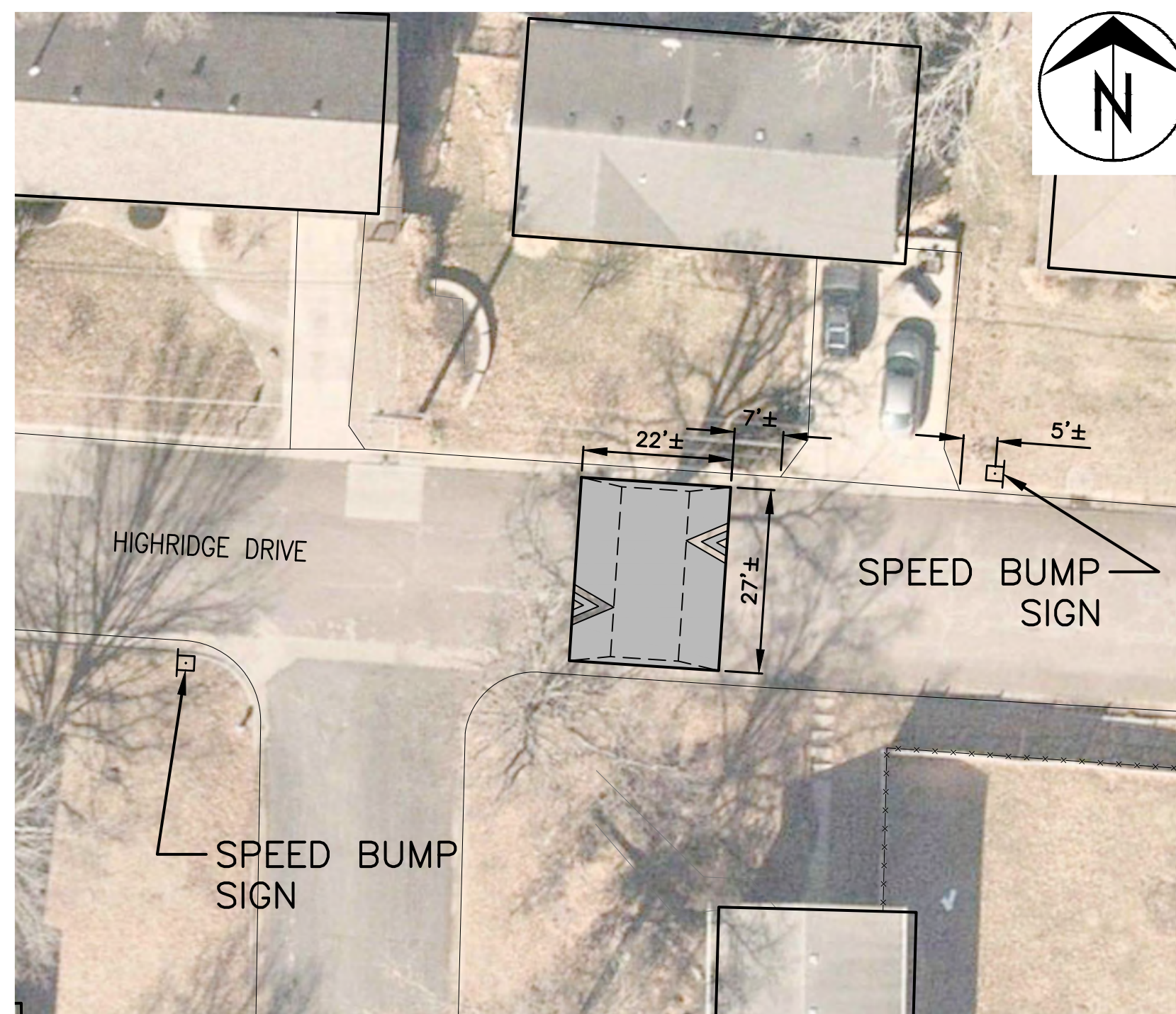
City of Columbia, Missouri
Department of Public Works

Shane Steven Creech
Registered Professional
Engineer
PE-2007011061

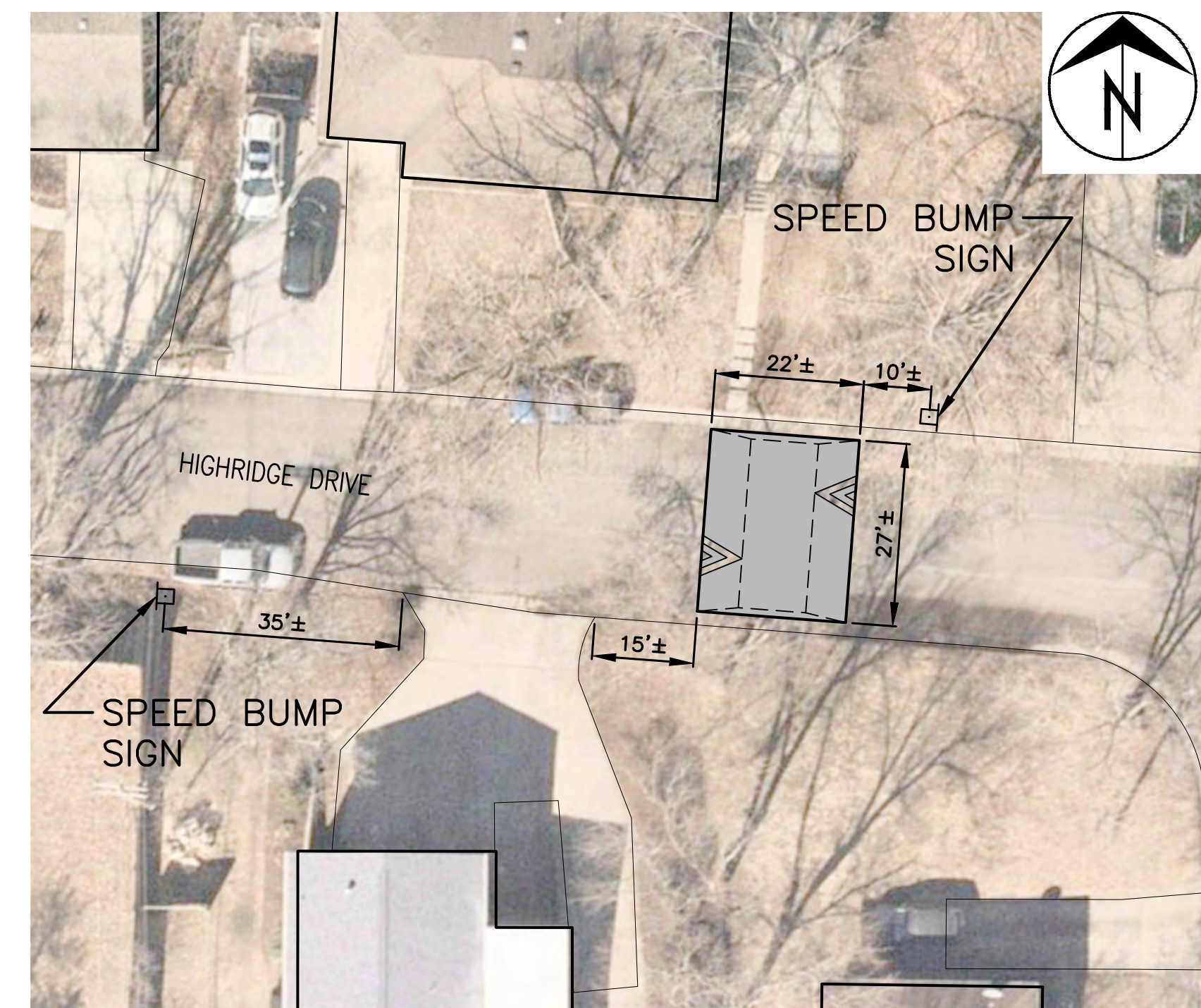
File No. .
Scale: As Shown
Date: 8/11/2022
Des. A.S.B.
Dwn. A.S.B.
Chk. J.D.R.



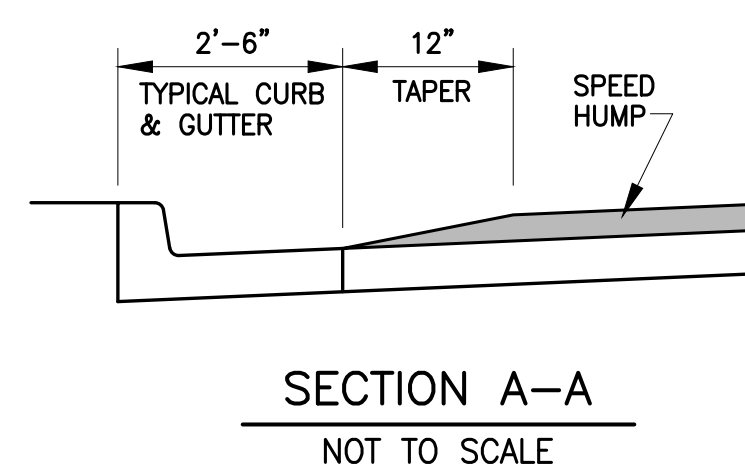
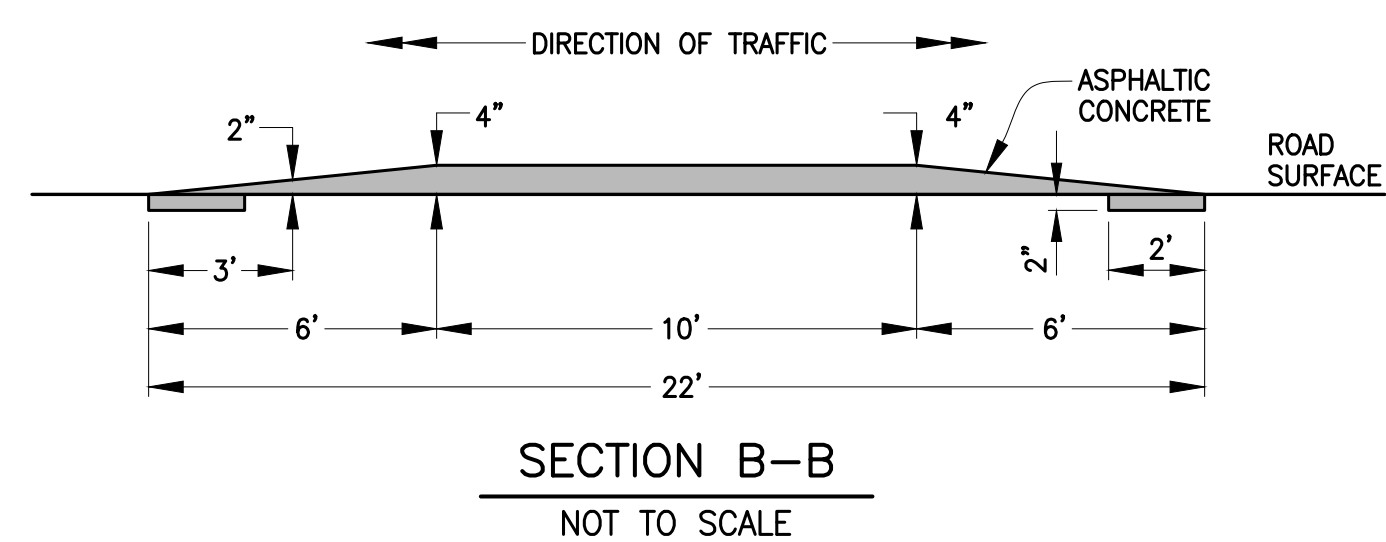
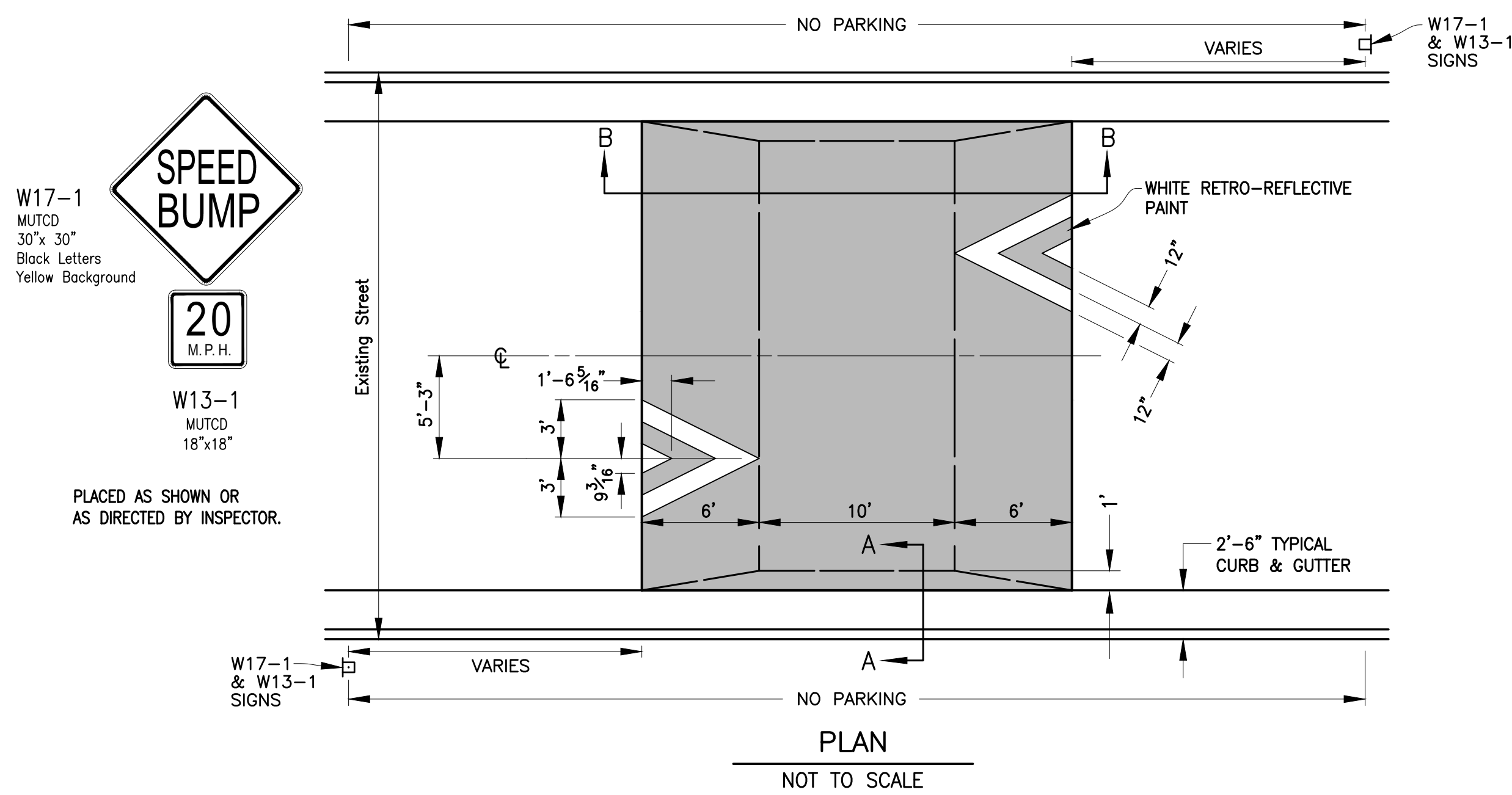
1814 HIGHRIDGE DRIVE
1" = 20'



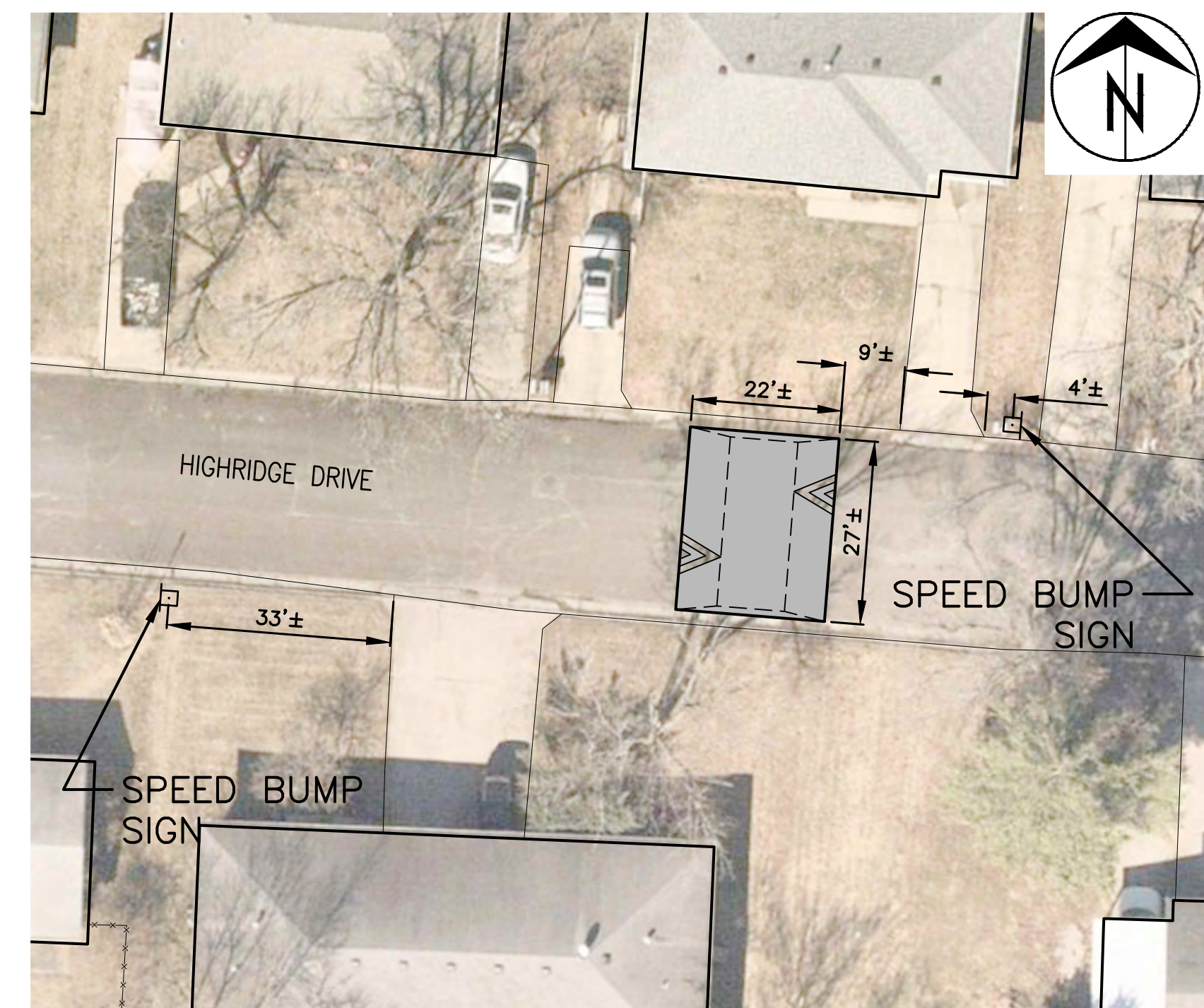
1721 HIGHRIDGE DRIVE
1" = 20'



1703 HIGHRIDGE DRIVE
1" = 20'



SPEED HUMP



1607 HIGHRIDGE DRIVE
1" = 20'

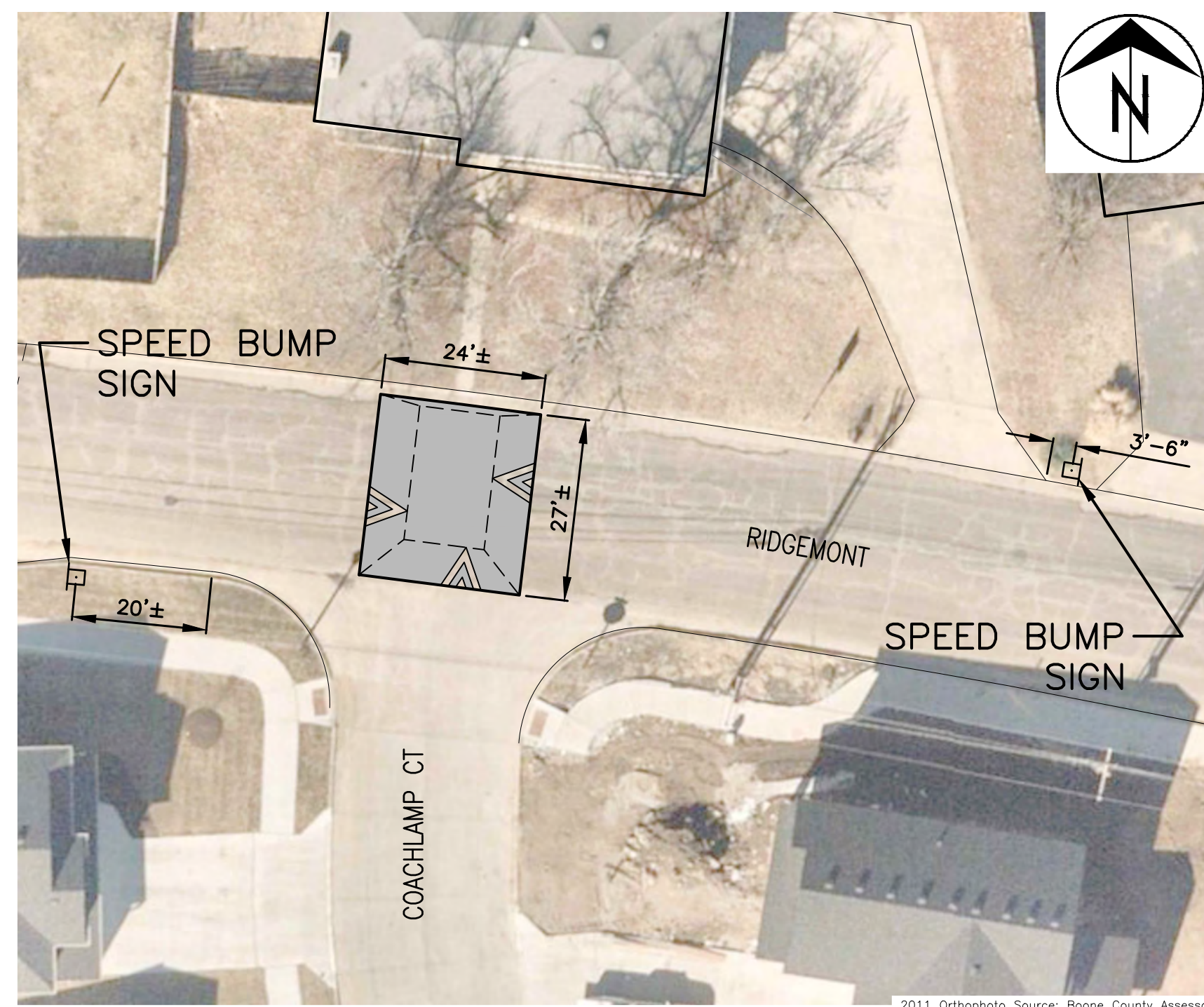
**HIGHRIDGE - RIDGEMONT - RIDGEFIELD
TRAFFIC CALMING**
Highridge Drive Speed Humps

City of Columbia, Missouri
Department of Public Works

Shane Steven Creech
Registered Professional
Engineer
PE-2007011061

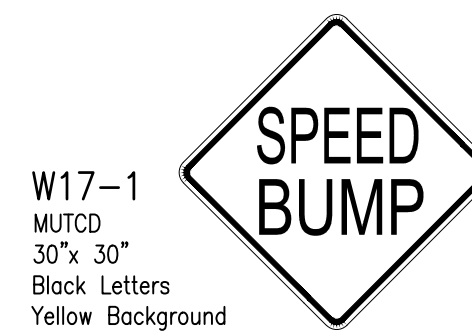
File No. .
Scale: As Shown
Date: 8/11/2022
Des. A.S.B.
Dwn. A.S.B.
Chk. J.D.R.

c:\cadd\p\verify\calming\ridgemont road - highridge - ridgemont\ridgemont - highridge - ridgefield traffic calming project.dwg



RIDGEMONT — COACHLAMP COURT
1" = 20'

Existing Street Width (Back of Curb to Back of Curb)	A
38' & wider	5'-3"
between 32' & 38'	3'-9"
32' & narrower	3'-2"

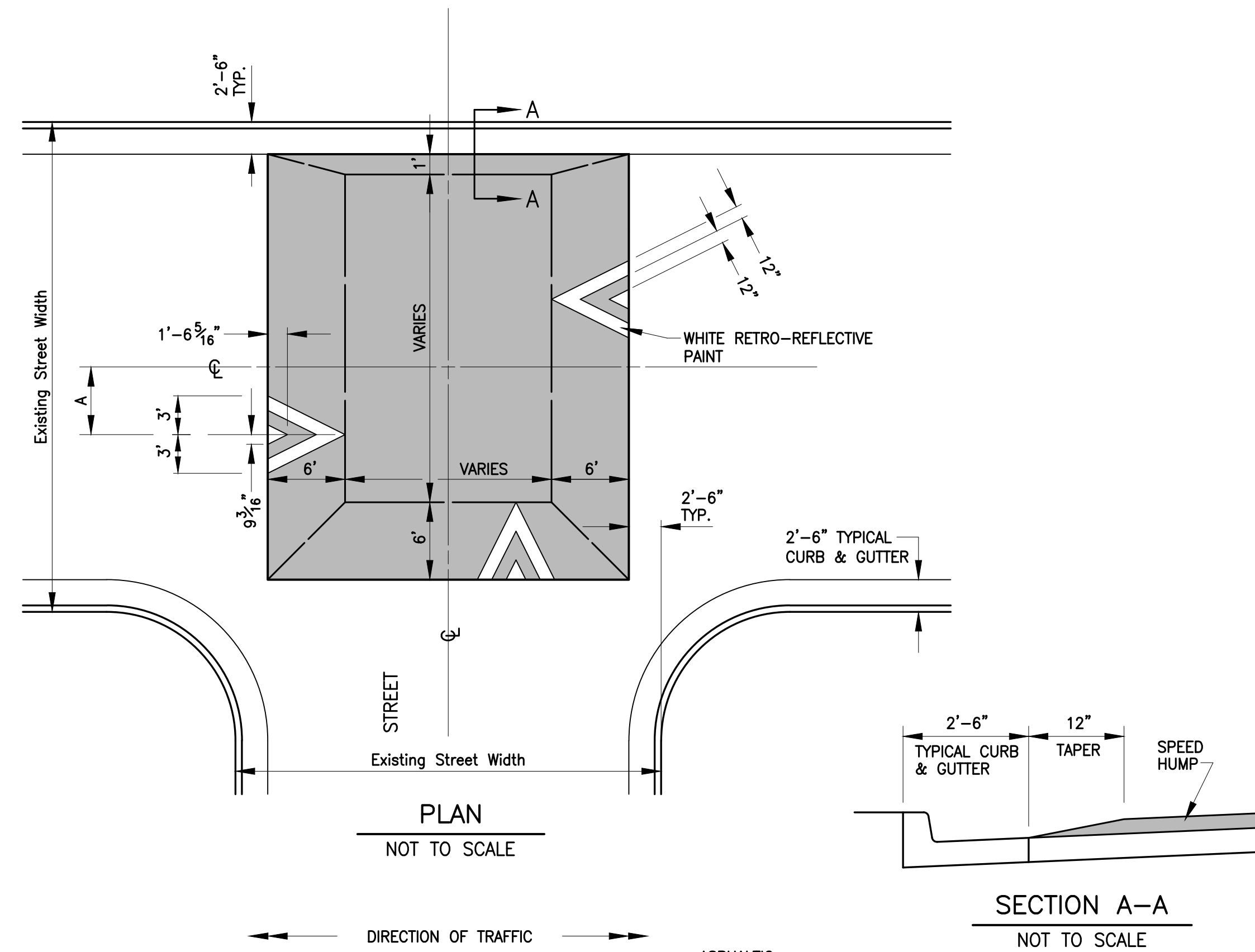


W17-1
MUTCD
30" x 30"
Black Letters
Yellow Background



W13-1
MUTCD
18" x 18"

PLACED APPROX. 30'
BEFORE TABLE OR AS
DIRECTED BY INSPECTOR.



SPEED TABLE — T-INTERSECTION

No.	Date	By	Revision

**HIGHRIDGE - RIDGEMONT - RIDGEFIELD
TRAFFIC CALMING**
Speed Table

City of Columbia, Missouri

Department of Public Works

Shane Steven Creech
Registered Professional
Engineer
PE-2007011061

File No.	.
Scale:	As Shown
Date:	8/11/2022
Des.	A.S.B.
Dwn.	A.S.B.
Chk.	J.D.R.