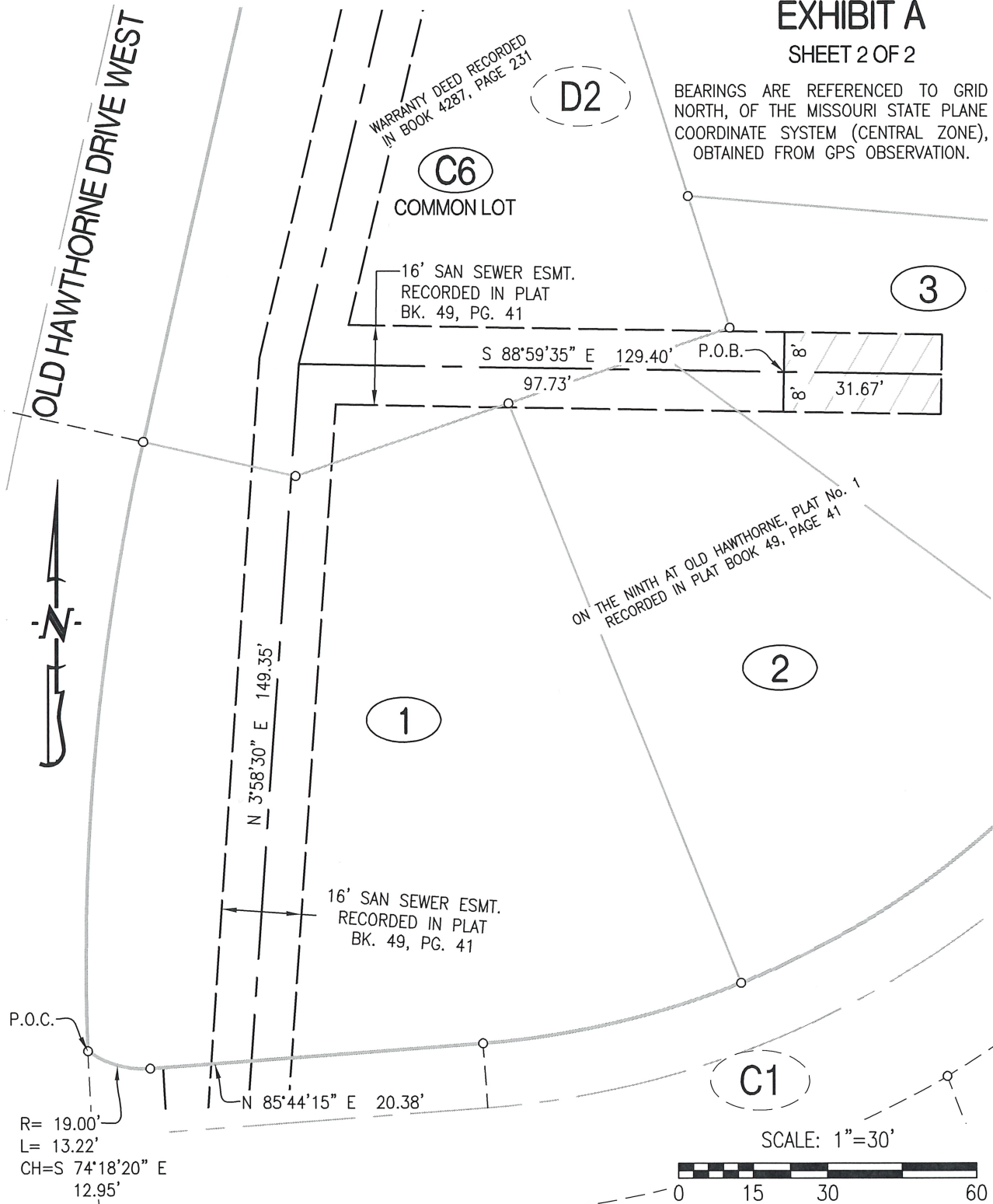


EXHIBIT A

SHEET 2 OF 2

BEARINGS ARE REFERENCED TO GRID NORTH, OF THE MISSOURI STATE PLANE COORDINATE SYSTEM (CENTRAL ZONE), OBTAINED FROM GPS OBSERVATION.



<p>CROCKETT ENGINEERING CONSULTANTS 1000 W. Nifong Blvd., Building 1 Columbia, Missouri 65203 (573) 447-0292 www.crockettengineering.com</p>	<p>CORPORATE NO: 2000151304</p>	<p>ON THE NINTH AT OLD HAWTHORNE, PLAT No. 2</p>	
	<p>DATE: 4/23/2020</p>	<p>SCALE: 1" = 30'</p>	<p>SANITARY SEWER EASEMENT VACATE LOCATED IN NE QUARTER OF SECTION 22 TOWNSHIP 48 NORTH, RANGE 12 WEST COLUMBIA, BOONE COUNTY, MISSOURI</p>
	<p>PROJECT: 991083</p>	<p>DRAWN BY: KWF</p>	