

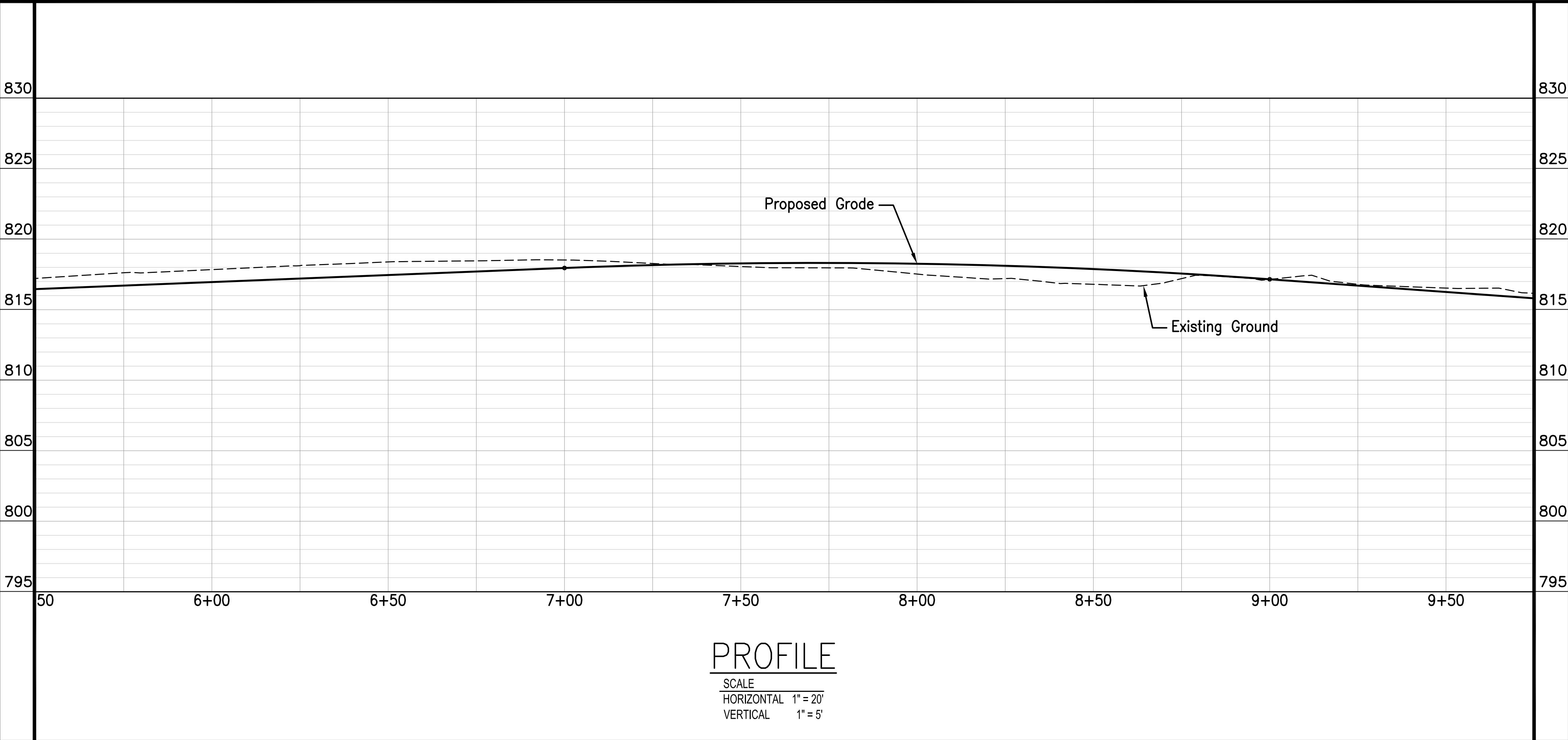
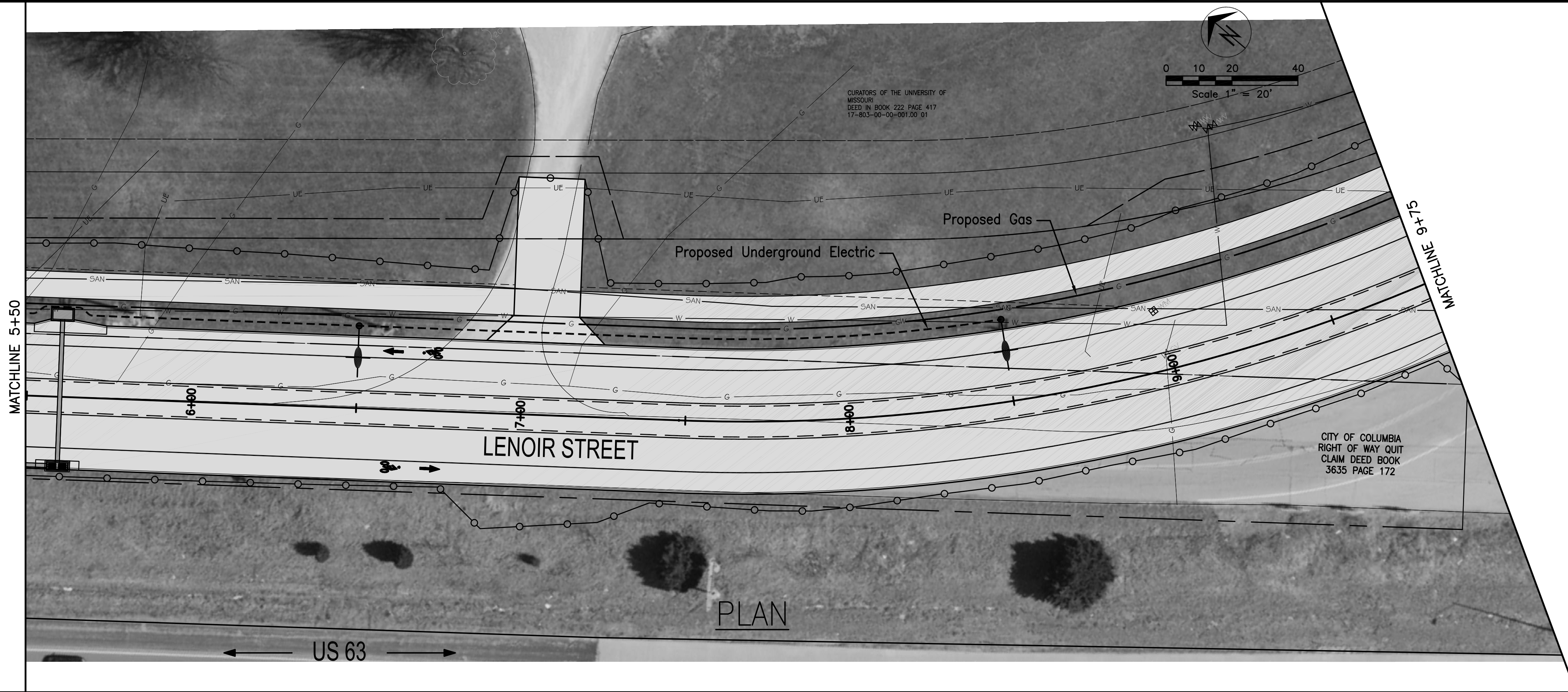
No.	Date	By	Revision

LENOIR STREET IMPROVEMENTS
Plan & Profile - Sta. 0+60 to Sta. 5+50

City of Columbia, Missouri
Department of Public Works

David Allen Nichols Registered Professional Engineer E-24212
File No. C00746
Scale: As Shown
Date: 8-23-19
Des. A.N.H.
Dwn. T.L.W.
Chk. AAA
Sheet 1 of 3

o:\caddproj\street\lenoir_connection\design\lenoir_connection_base.dwg



PROFILE
 SCALE
 HORIZONTAL 1" = 20'
 VERTICAL 1" = 5'

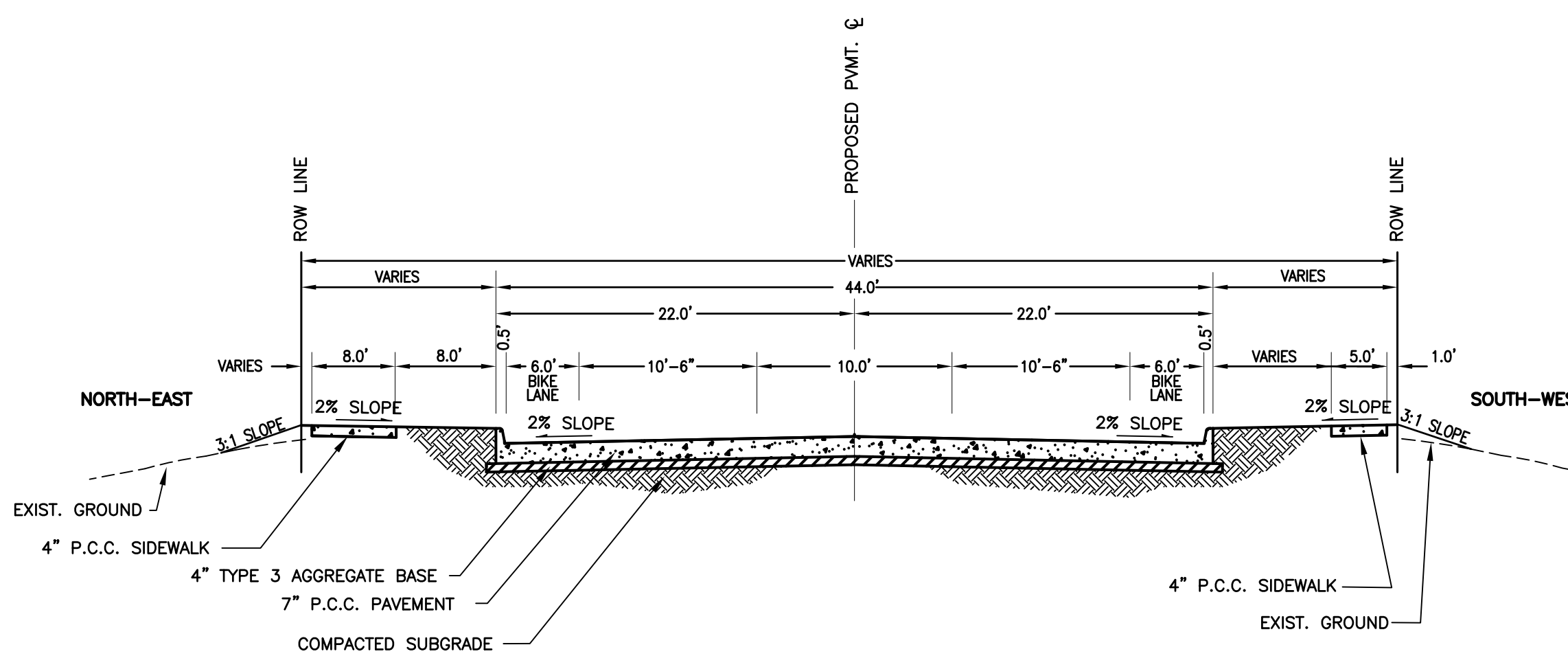
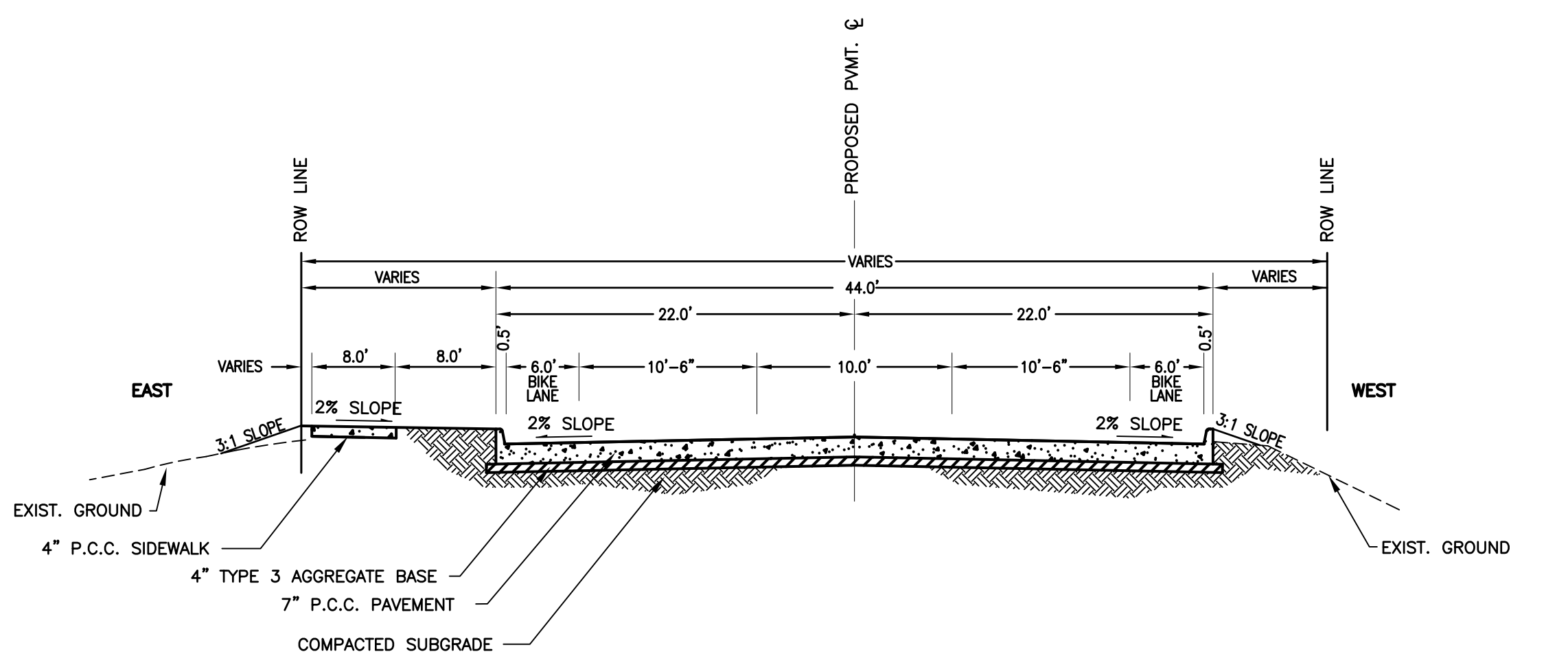
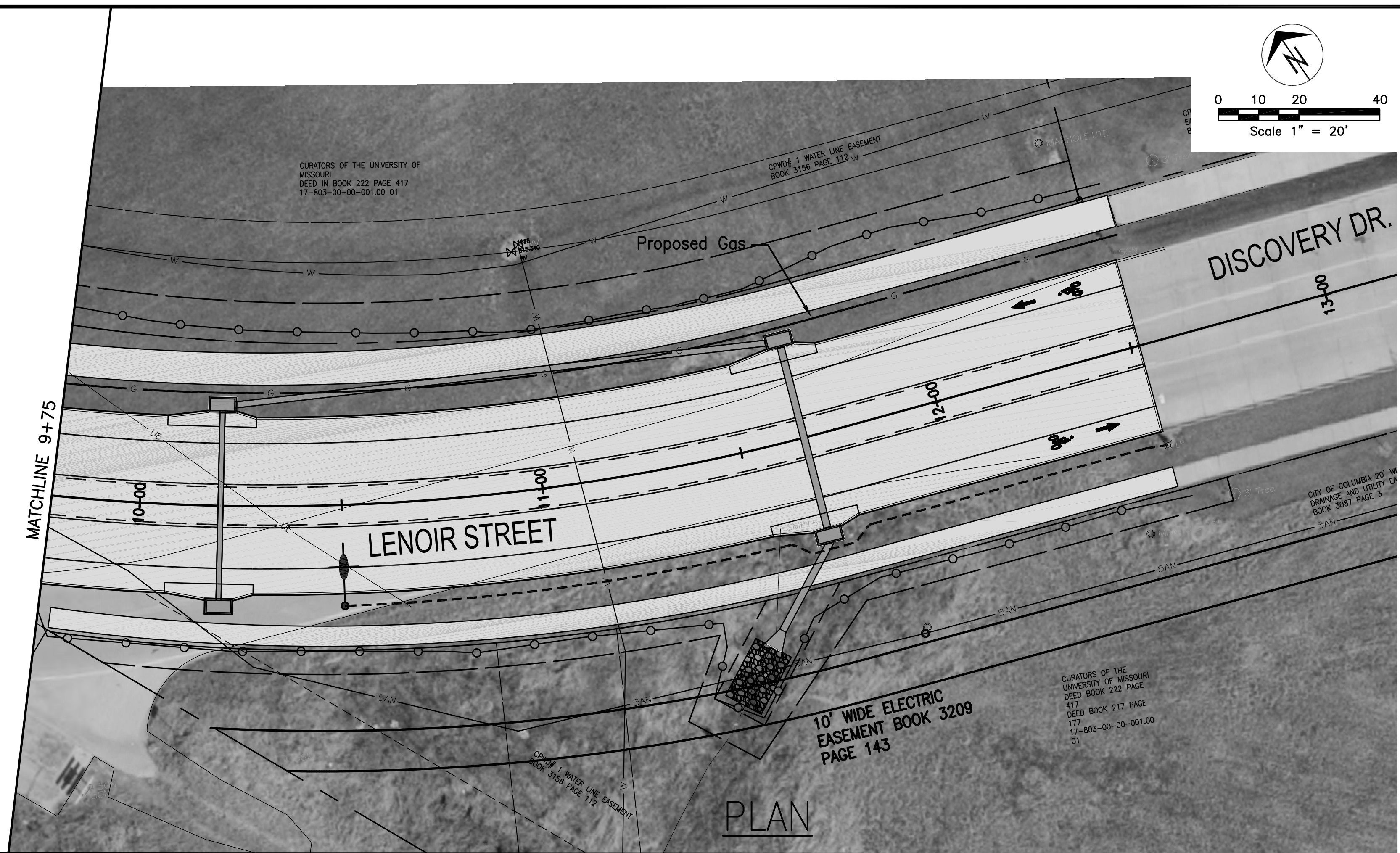
No.	Date	By	Revision

LENOIR STREET IMPROVEMENTS
 Plan & Profile - Sta. 5+50 to Sta. 9+75

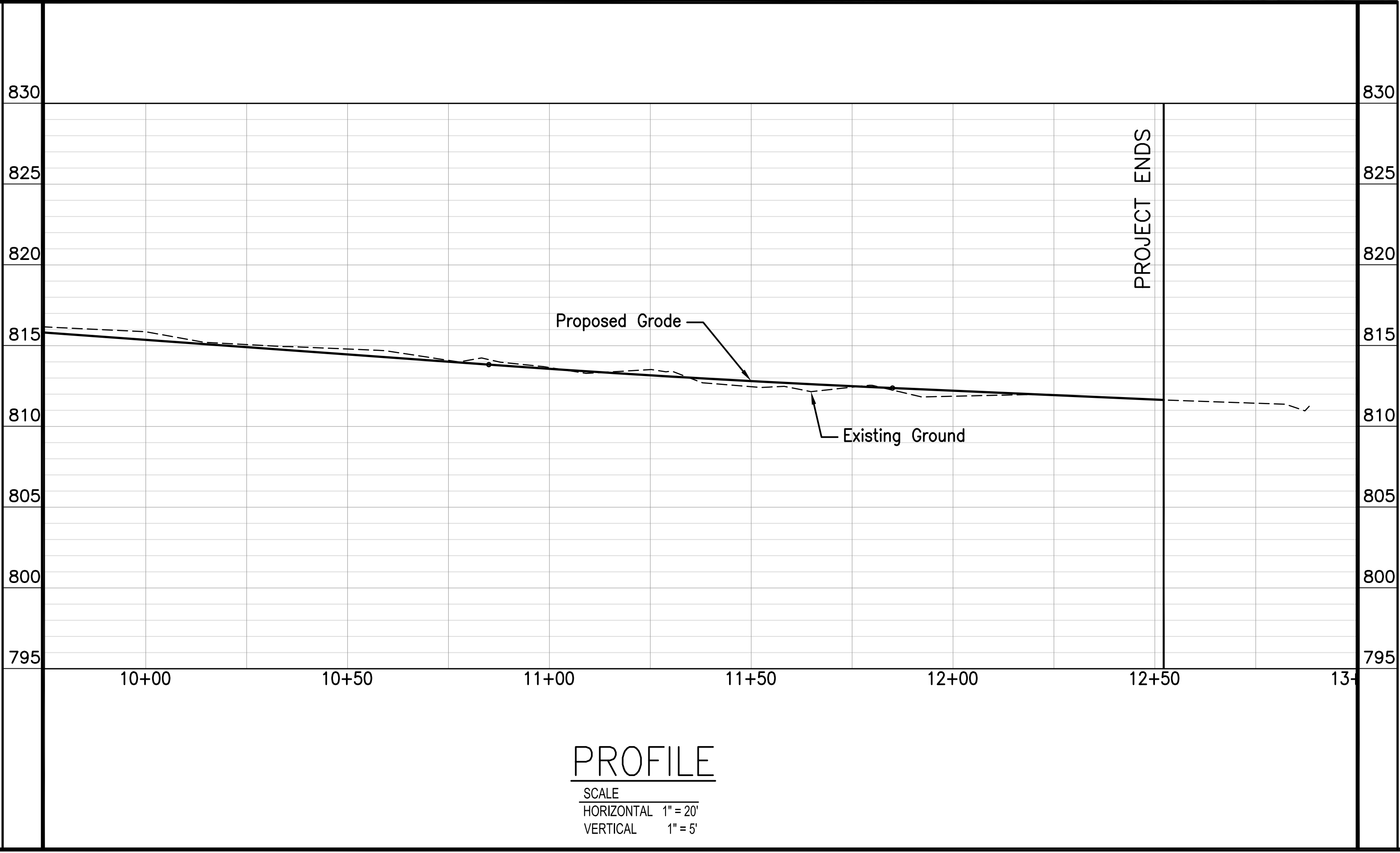
City of Columbia, Missouri
 Department of Public Works

David Allen Nichols Registered Professional Engineer E-24212
File No. C00746
Scale: As Shown
Date: 8-23-19
Des. A.N.H.
Dwn. T.L.W.
Chk. AAA
Sheet 2 of 3

o:\cadd\proj\street\connection\design\lenoir_connection_base.dwg



NOTES:
1. ALL P.C. CONCRETE SHALL BE MoDOT PAVEMENT CONCRETE
2. SEE DETAIL 200.01 FOR JOINT DETAILS.



Revision	
By	
Date	
No.	
LENOR STREET IMPROVEMENTS Plan & Profile - Sta. 9+75 to Sta. 12+52.20	
City of Columbia, Missouri Department of Public Works	
David Allen Nichols Registered Professional Engineer E-24212	
File No.	C00746
Scale:	As Shown
Date:	8-23-19
Des.	A.N.H.
Dwn.	T.L.W.
Chk.	AAA
Sheet 3 of 3	