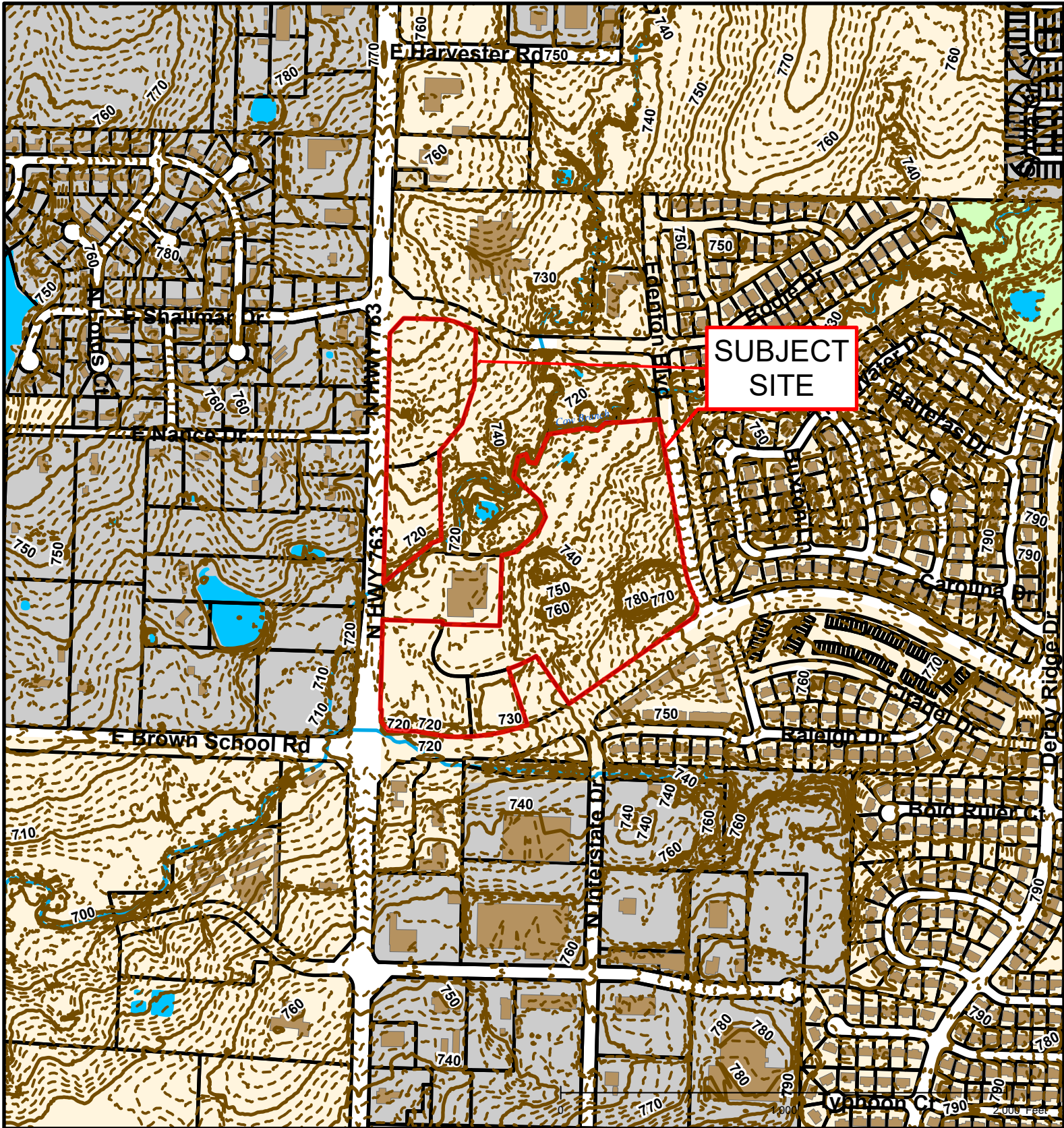


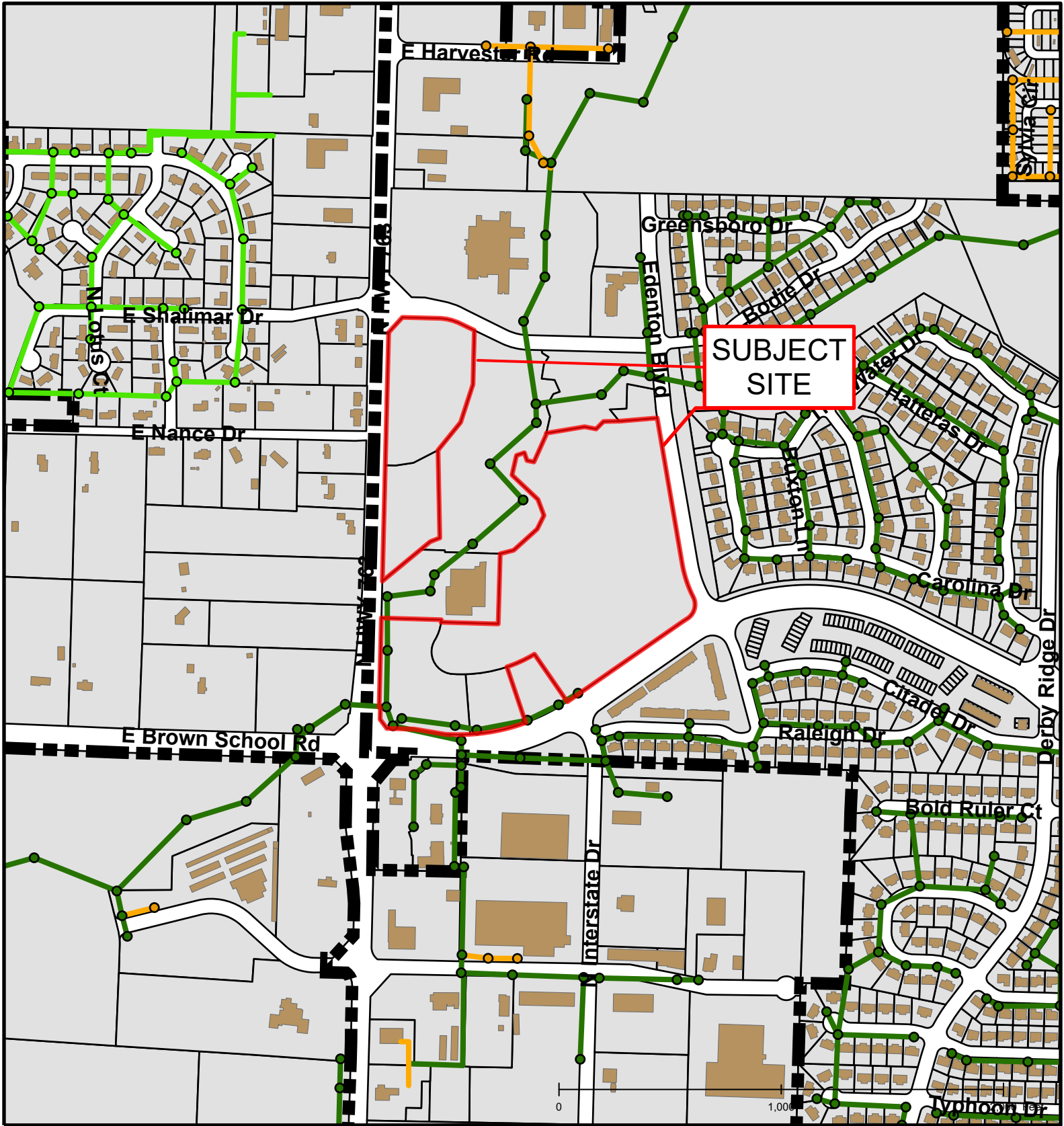
Case #143-2019: Auburn Hills Commercial Rezoning





Case #143-2019: Auburn Hills Commercial Rezoning





Case #143-2019: Auburn Hills Commercial Rezoning

| | | | |
|---|----------------------------|---|-----------------------|
|  | BCRSD |  | BCRSD |
|  | City Sanitary Structure |  | City Sanitary Line |
|  | Private Sanitary Structure |  | Private Sanitary Line |



Created by The City of Columbia - Community Development Department

Parcel Data Source: Boone County Assessor

2017 Imagery: Boone County Assessor's Office

Hillshade Data: Boone County GIS