

Case # 105-2023 - 1611 University Avenue

Final

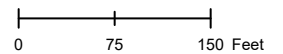


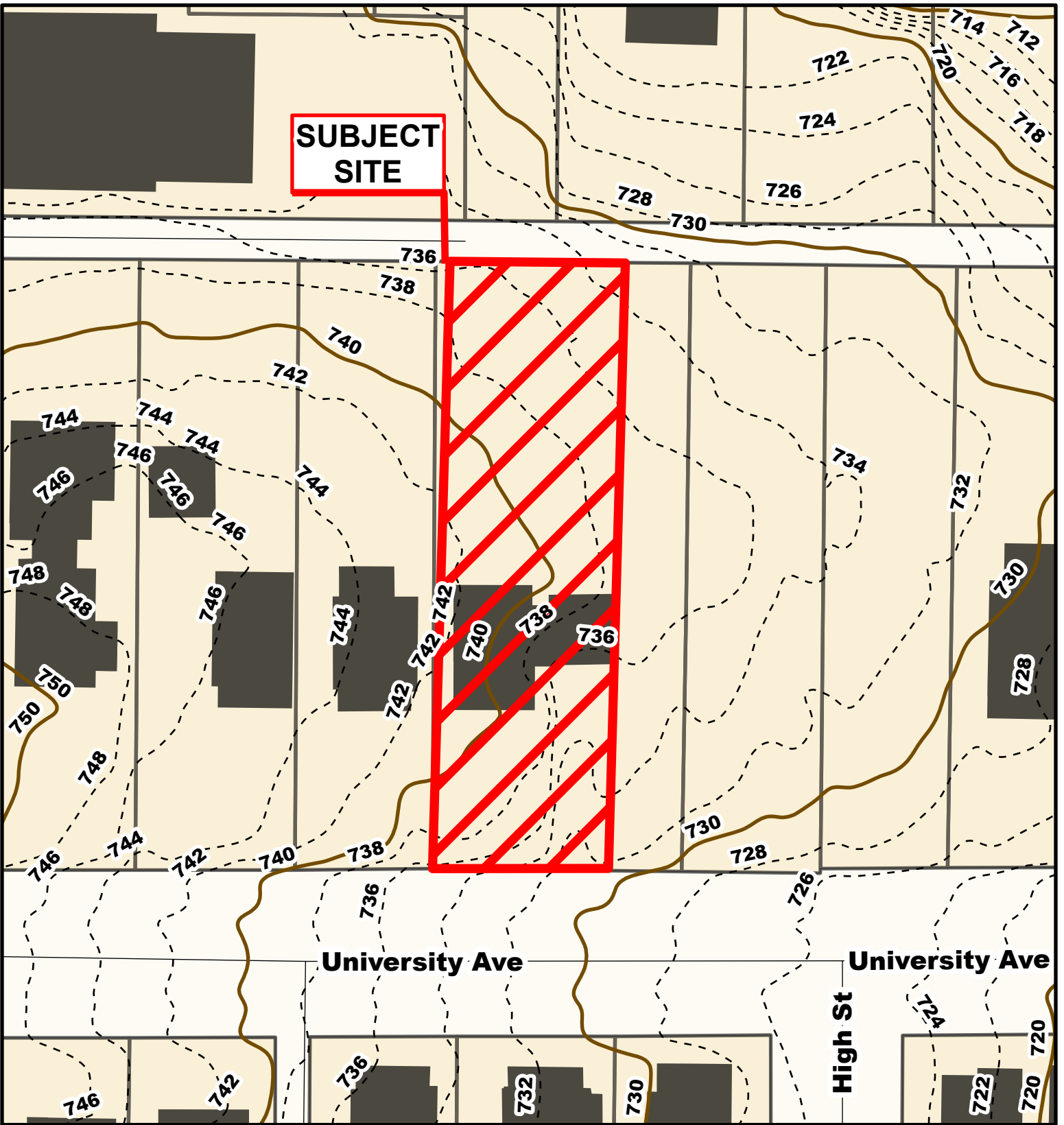
City Zoning Parcels

Parcel Data Source: Boone County Assessor

Created by The City of Columbia - Community Development Department

2022 Imagery: NearMap



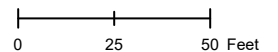


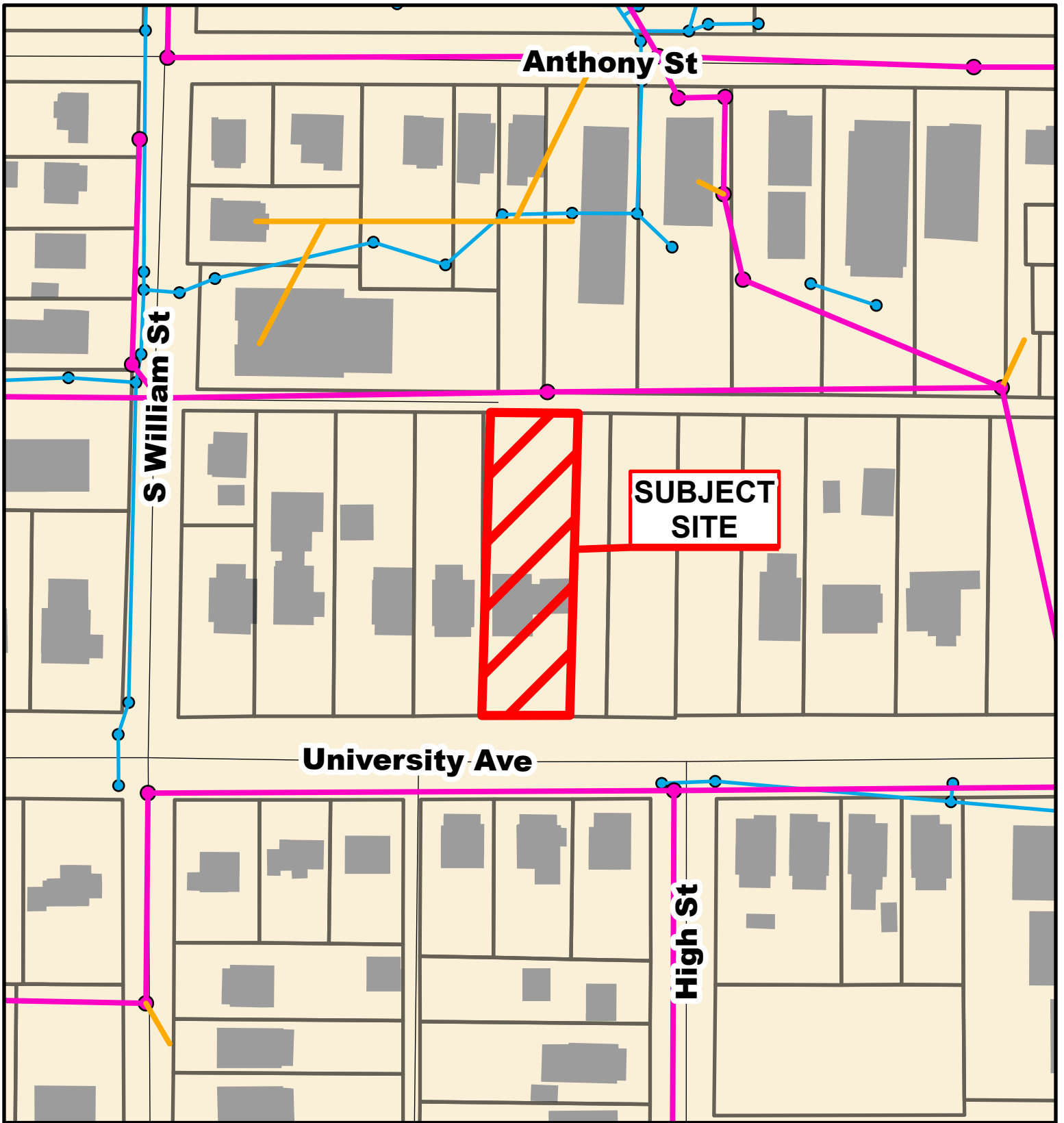
SUBJECT SITE

**Case # 105-2023 - 1611 University Avenue
Final**



- 10 Foot Contour Lines
- Parcels
- 2 Foot Contour Lines





Case # 105-2023 - 1611 University Avenue
Final



- City Sanitary Line — City Storm Lines
- Private Sanitary Line Parcels

