





Source: Nearmap <https://www.nearmap.com/us/en>

Case # 255-2024 - 5301 E St. Charles Road Final Plat



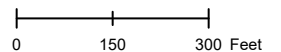
-  Columbia City Limit
-  City Zoning
-  City Property
-  Parcels

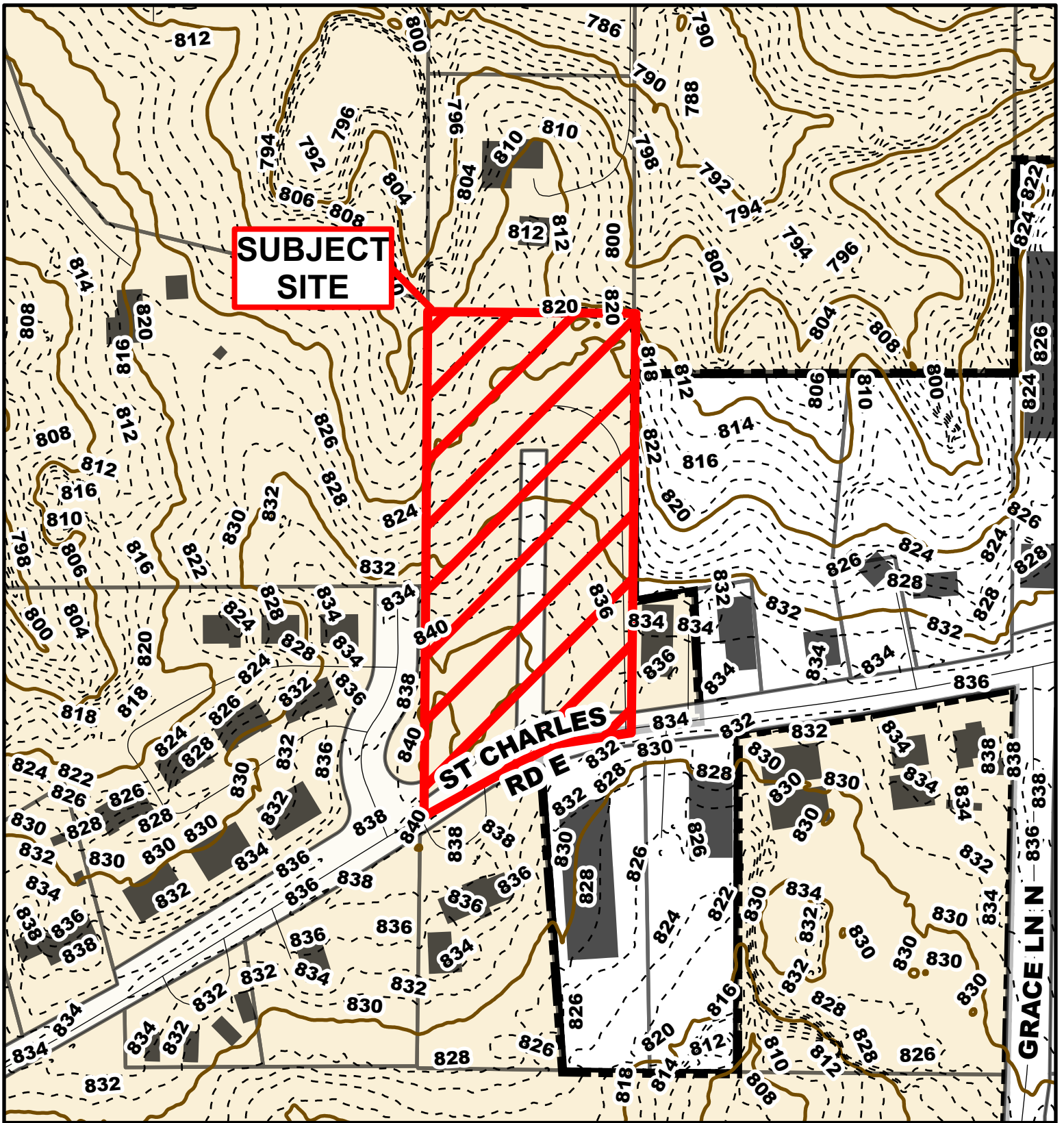


Parcel Data Source: Boone County Assessor

Created by The City of Columbia - Community Development Department

2024 Imagery: NearMap





Case # 255-2024 - 5301 E St. Charles Road

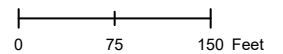
Final Plat



- 10 Foot Contour Lines
- - - 2 Foot Contour Lines
- City of Columbia
- Parcels

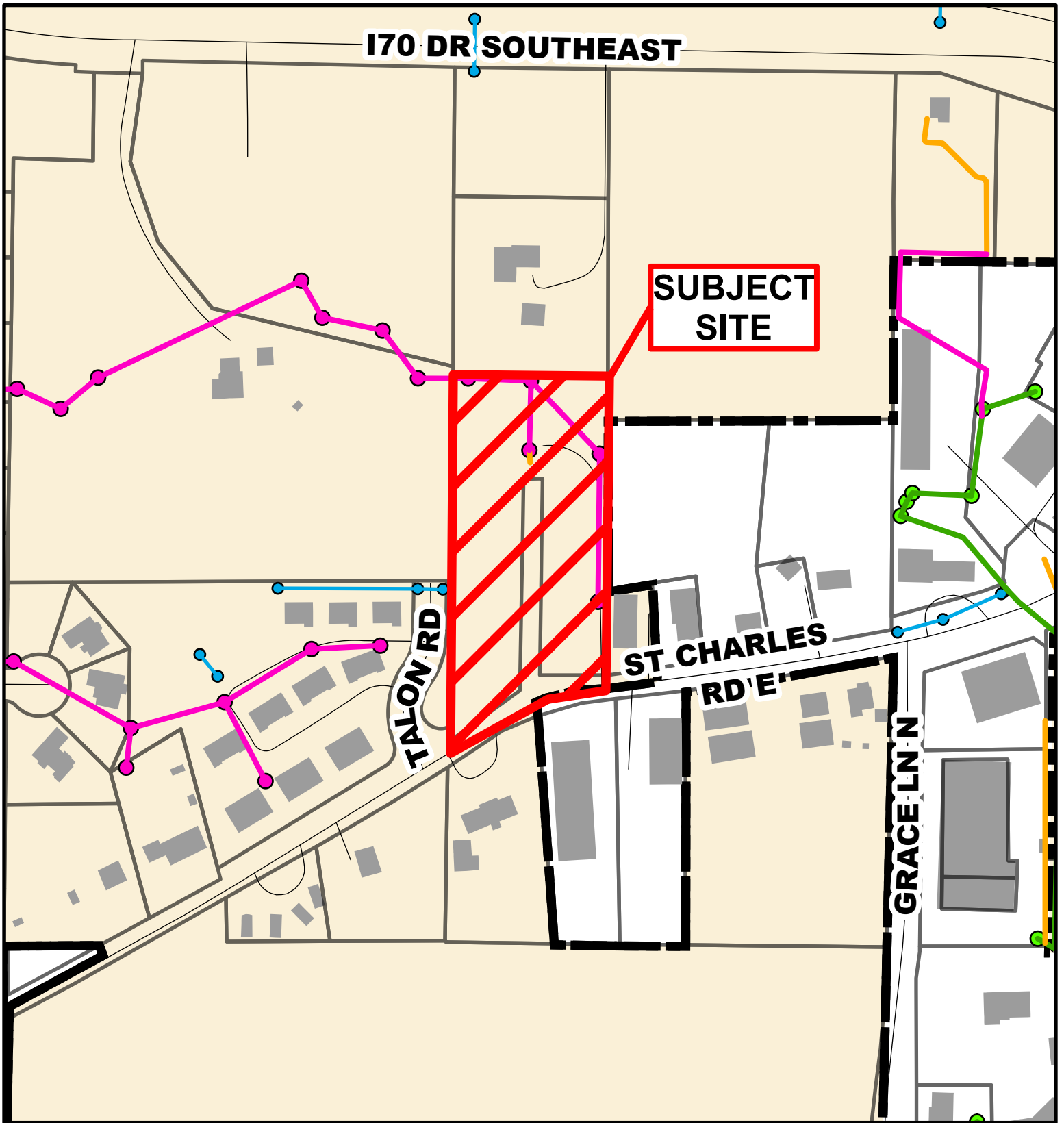
Parcel Data Source: Boone County Assessor

Created by The City of Columbia - Community Development Department



N





SUBJECT SITE

Case # 255-2024 - 5301 E St. Charles Road

b



- City Sanitary Line
- BCRSD Sanitary Line
- Private Sanitary Line
- City Storm Lines
- Parcels
- Columbia City Limit

