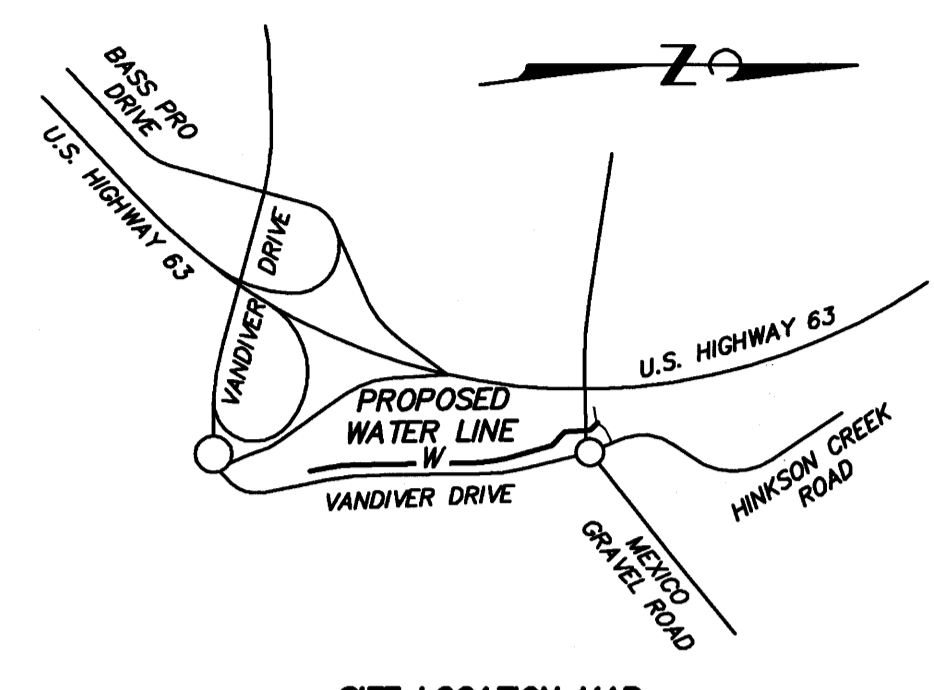


# CENTERSTATE PLAT 14

COLUMBIA, BOONE COUNTY, MISSOURI  
**PRELIMINARY PLAT**  
 DECEMBER 12, 2017



**Engineering Surveys and Services**  
 Consulting Engineers, Surveyors, and Land Surveyors  
 Analytical and Material Laboratories  
 1113 Fry Street, Columbia, Missouri 65201  
 573-449-2646 | www.es-s-inc.com  
 Other Offices:  
 Jefferson City, Missouri - Sothula, Missouri  
 Missouri Land Surveying Corporation # 2004004672



**SITE LOCATION MAP**  
 NOT TO SCALE

**PROPERTY OWNER**

LAST ENTERPRISES, LLC  
 4104 JOSEPH COURT  
 COLUMBIA, MISSOURI 65203  
 PHONE: (573) 445-1020

**PROPERTY DESCRIPTION**

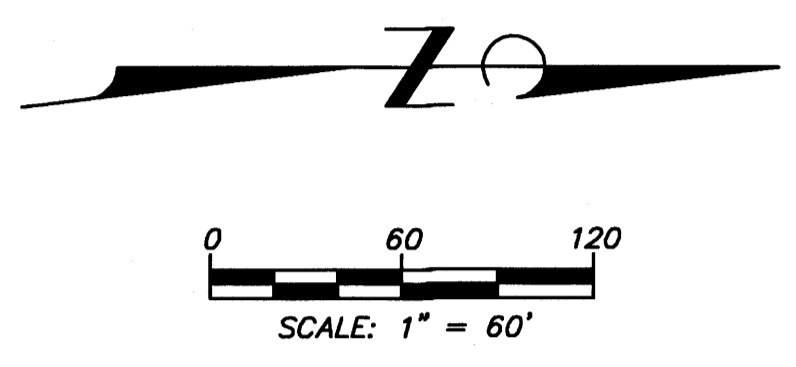
LOT 1 CENTERSTATE PLAT 13 RECORDED IN PLAT BOOK 46 PAGE 27

**ZONING NOTE**

THIS PROPERTY IS ZONED PD "PLANNED DEVELOPMENT"  
 WITH AREAS WITHIN FP-0 "FLOODPLAIN OVERLAY".

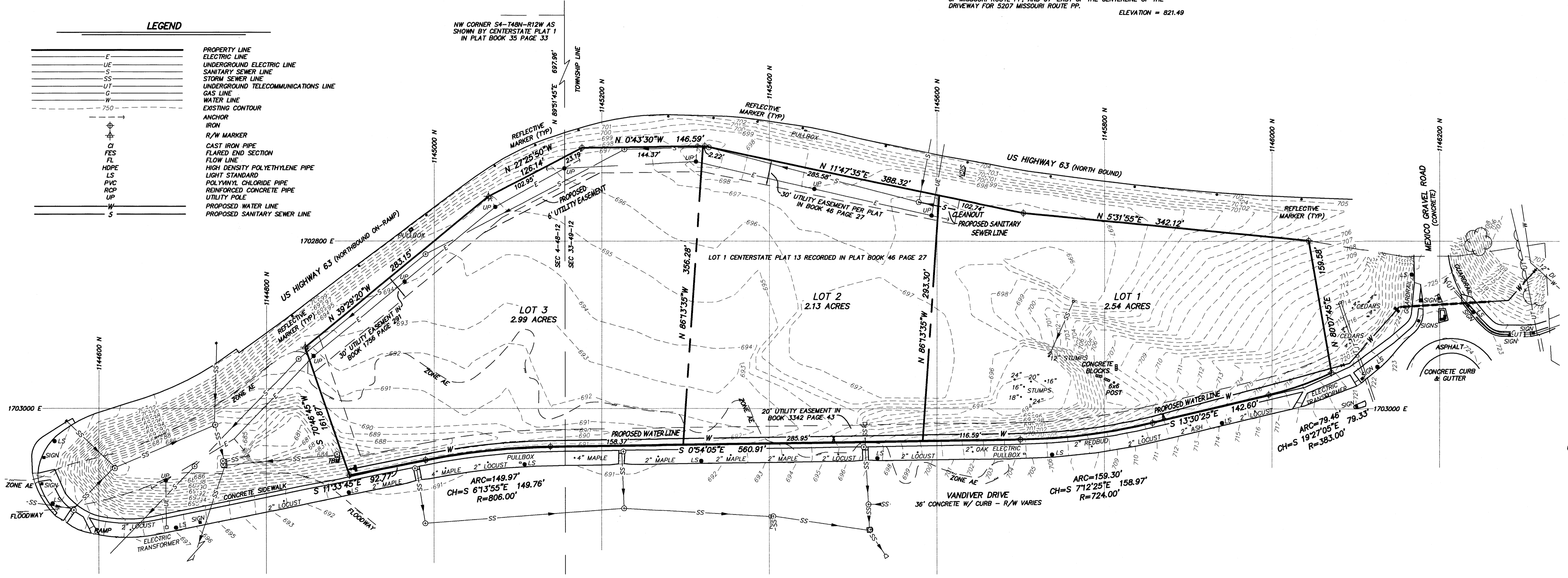
**BENCH MARK**

BM - MISSOURI GEOGRAPHIC REFERENCE SYSTEM MONUMENT "90-04",  
 ALUMINUM DISK IN CONCRETE, LOCATED 25' NORTH OF THE CENTER LINE  
 OF MISSOURI ROUTE PP AND 67' EAST OF THE CENTERLINE OF THE  
 DRIVEWAY FOR 5207 MISSOURI ROUTE PP. ELEVATION = 821.49



**LEGEND**

—E—	PROPERTY LINE
—UE—	ELECTRIC LINE
—S—	UNDERGROUND ELECTRIC LINE
—SS—	SANITARY SEWER LINE
—SS—	STORM SEWER LINE
—UT—	UNDERGROUND TELECOMMUNICATIONS LINE
—C—	GAS LINE
—W—	WATER LINE
- - - - -	EXISTING CONTOUR
750	ANCHOR
⊕	IRON
⊕	R/W MARKER
⊕	CAST IRON PIPE
⊕	FLARED END SECTION
FL	FLOW LINE
HDPE	HIGH DENSITY POLYETHYLENE PIPE
LS	LIGHT STANDARD
PVC	POLYVINYL CHLORIDE PIPE
RCPC	REINFORCED CONCRETE PIPE
UP	UTILITY POLE
—W—	PROPOSED WATER LINE
—SS—	PROPOSED SANITARY SEWER LINE



**FLOODPLAIN NOTE**

PORTIONS OF THIS PROPERTY ARE LOCATED IN SPECIAL FLOOD  
 HAZARD AREA, ZONE AE, AS SHOWN BY FLOOD INSURANCE RATE MAP  
 NUMBER 29019C0282E, DATED APRIL 19, 2017.

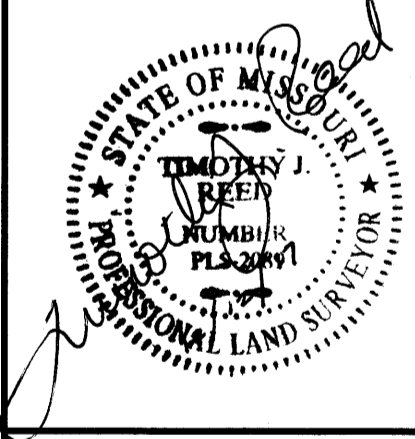
**STREAM BUFFER NOTE**

THIS TRACT IS NOT REGULATED BY THE CITY OF COLUMBIA  
 STREAM BUFFER ORDINANCE AS DETERMINED BY THE USGS MAP FOR  
 COLUMBIA QUADRANGLE, BOONE COUNTY, MISSOURI AND ARTICLE X OF  
 CHAPTER 12A OF THE CITY OF COLUMBIA CODE OF ORDINANCES.

APPROVED BY THE PLANNING AND ZONING COMMISSION,  
 COLUMBIA, MISSOURI, ON DECEMBER 21, 2017.

RUSTY STRODTMAN, CHAIRPERSON

**LOT 1 CENTERSTATE PLAT 14**  
 COLUMBIA, BOONE COUNTY, MISSOURI



TIMOTHY J. REED  
 PROFESSIONAL LAND SURVEYOR  
 LS-2089

IF ORIGINAL SIGNATURE OR DIGITAL  
 AUTHENTICATION IS NOT PRESENT THIS  
 MEDIA SHOULD NOT BE CONSIDERED A  
 CERTIFIED DOCUMENT.

Date  
**DECEMBER 12, 2017**

Revised

Surveyed: NTL Drawn: MJS

**PRELIMINARY PLAT**

Sheet  
**C1.01**

1 of 1

ES&S PROJECT NO. 13733

F:\CURRENTDRAWINGS\LAST\513733\13733 PRELIM PLATING 12/12/2017