



2015 Orthophoto Source: Boone County Assessor

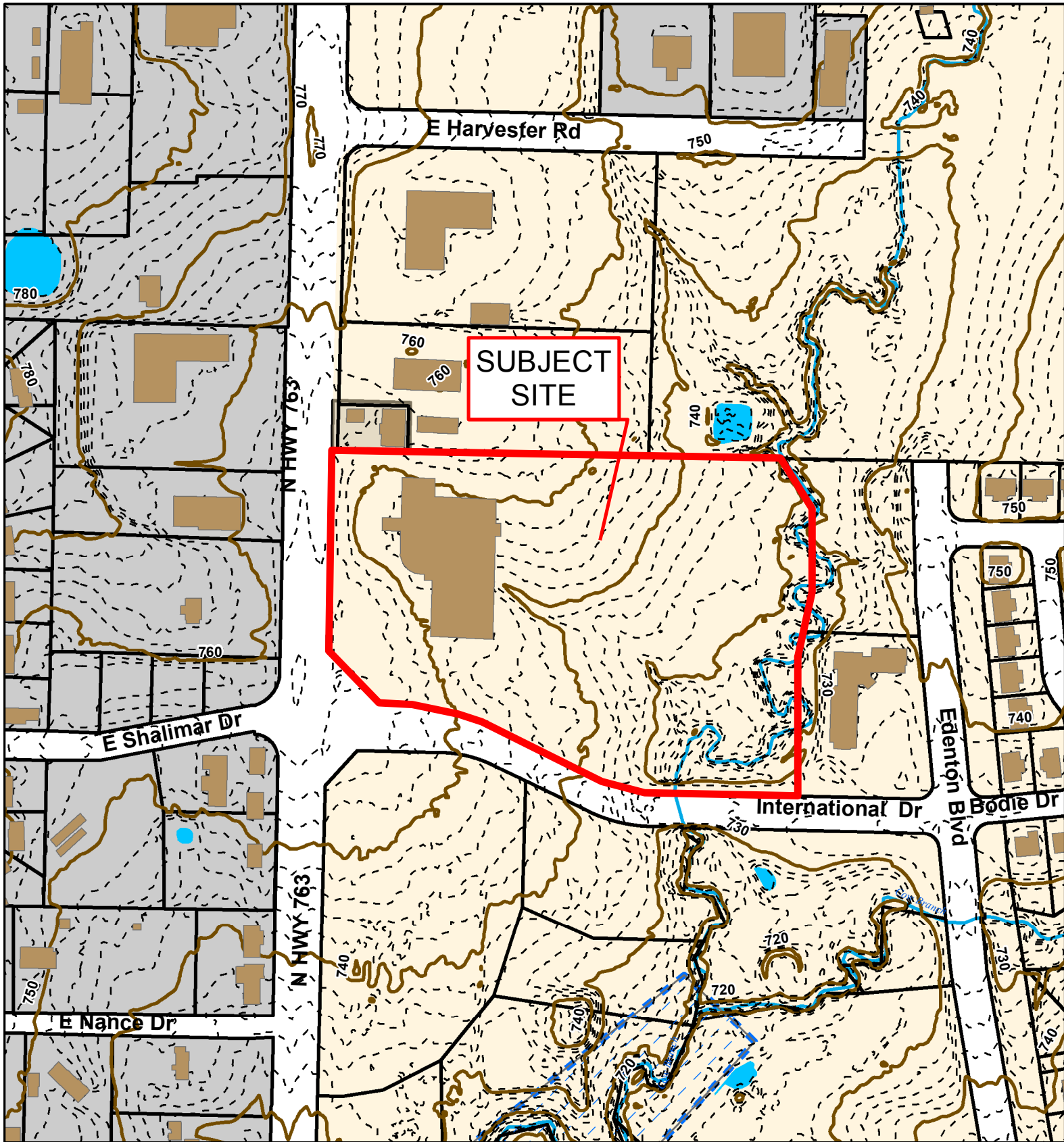
17-34: Centerpointe Hospital of Columbia

C-P Plan



- City Zoning
- Parcels
- Boone County Zoning
- Columbia City Limit



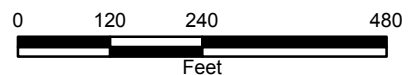


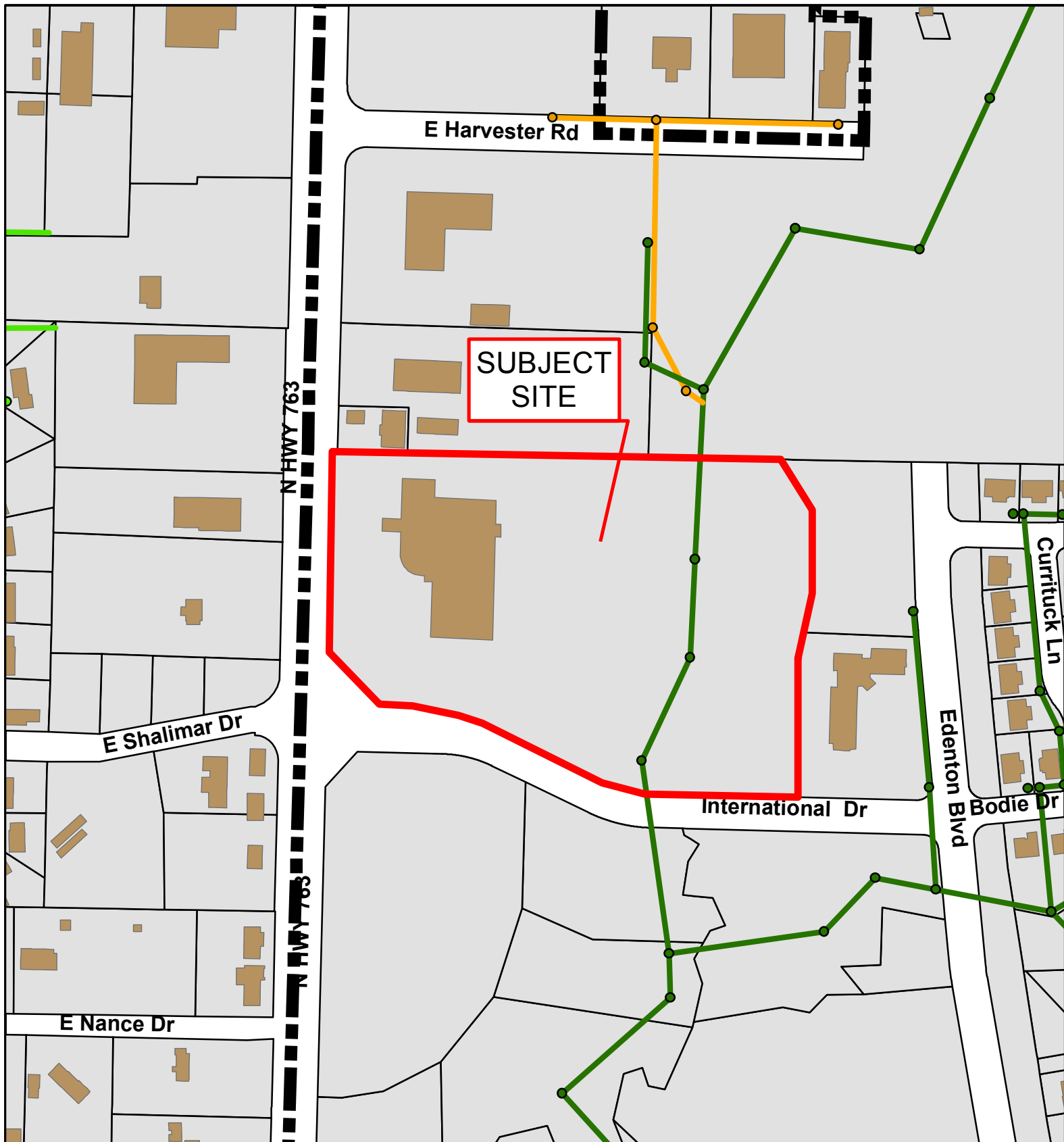
17-34: Centerpointe Hospital of Columbia

C-P Plan



- 10 Foot Contour Lines
- 2 Foot Contour Lines
- Parcels
- Building Footprint





17-34: Centerpointe Hospital of Columbia C-P Plan

