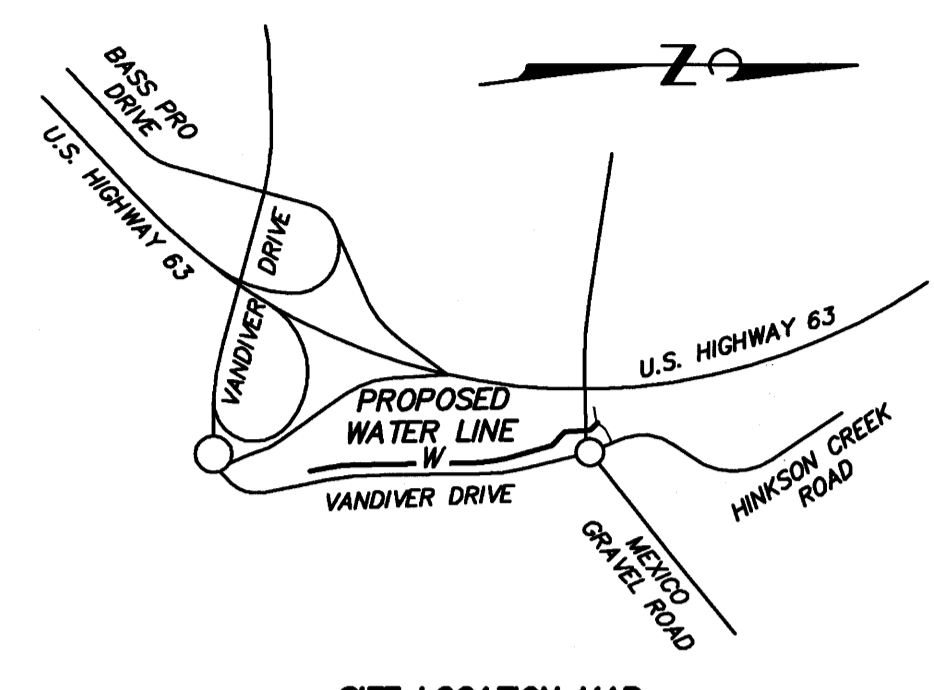


CENTERSTATE PLAT 14

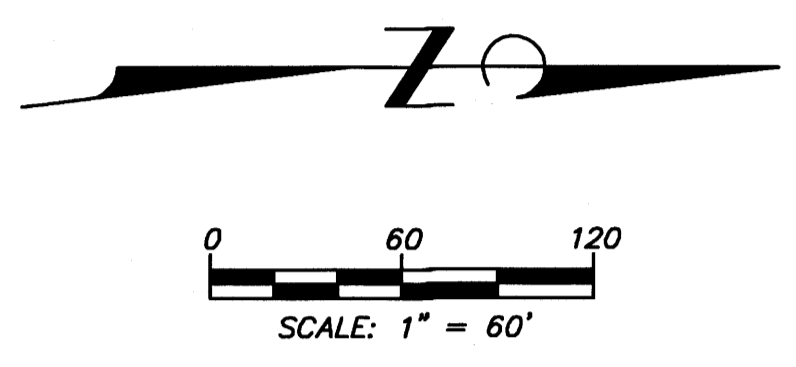
COLUMBIA, BOONE COUNTY, MISSOURI
PRELIMINARY PLAT
 DECEMBER 12, 2017



Engineering Surveys and Services
 Consulting Engineers, Surveyors, and Land Surveyors
 Analytical and Material Laboratories
 1113 Fry Street, Columbia, Missouri 65201
 573-449-2646 | www.es-s-inc.com
 Other Offices:
 Jefferson City, Missouri - Sothula, Missouri
 Missouri Land Surveying Corporation # 2004004672



SITE LOCATION MAP
 NOT TO SCALE



PROPERTY OWNER

LAST ENTERPRISES, LLC
 4104 JOSEPH COURT
 COLUMBIA, MISSOURI 65203
 PHONE: (573) 445-1020

PROPERTY DESCRIPTION

LOT 1 CENTERSTATE PLAT 13 RECORDED IN PLAT BOOK 46 PAGE 27

ZONING NOTE

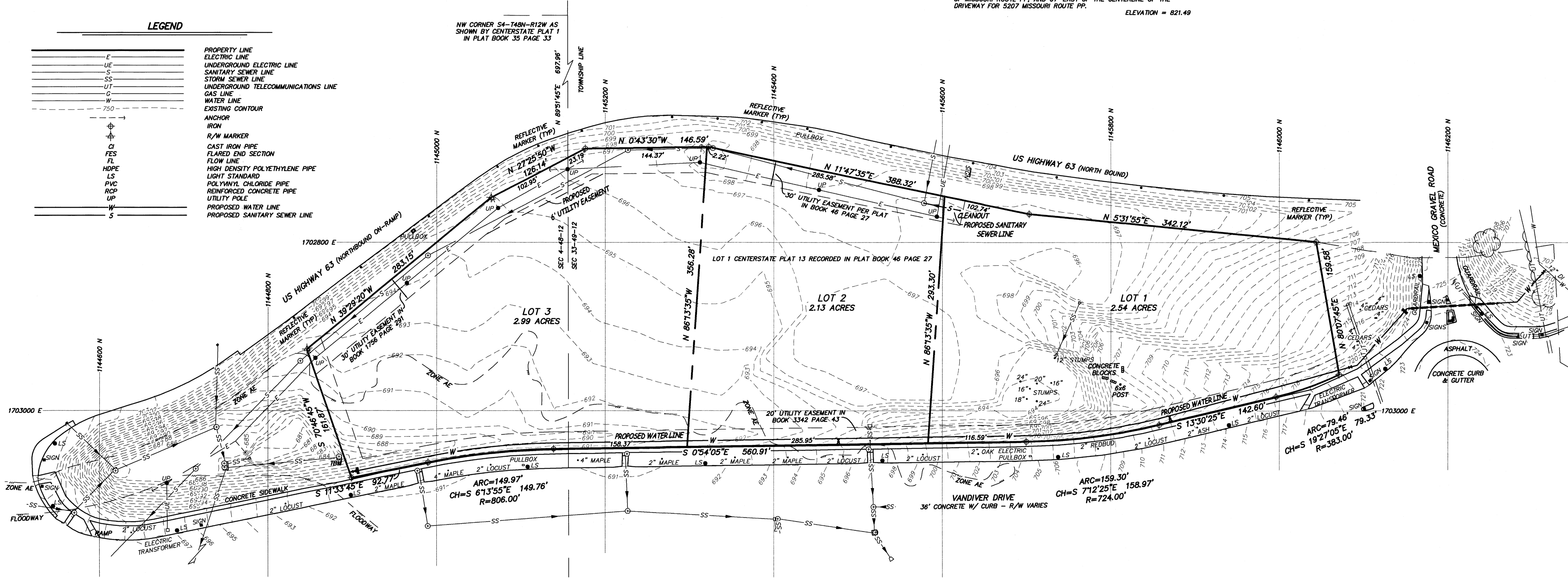
THIS PROPERTY IS ZONED PD "PLANNED DEVELOPMENT"
 WITH AREAS WITHIN FP-0 "FLOODPLAIN OVERLAY".

BENCH MARK

BM - MISSOURI GEOGRAPHIC REFERENCE SYSTEM MONUMENT "90-04",
 ALUMINUM DISK IN CONCRETE, LOCATED 25' NORTH OF THE CENTER LINE
 OF MISSOURI ROUTE PP AND 67' EAST OF THE CENTERLINE OF THE
 DRIVEWAY FOR 5207 MISSOURI ROUTE PP. ELEVATION = 821.49

LEGEND

—E—	PROPERTY LINE
—UE—	ELECTRIC LINE
—S—	UNDERGROUND ELECTRIC LINE
—SS—	SANITARY SEWER LINE
—SS—	STORM SEWER LINE
—UT—	UNDERGROUND TELECOMMUNICATIONS LINE
—C—	GAS LINE
—W—	WATER LINE
- - - - -	EXISTING CONTOUR
750	ANCHOR
⊕	IRON
⊕	R/W MARKER
⊕	CAST IRON PIPE
⊕	FLARED END SECTION
⊕	FLOW LINE
⊕	HDPPE HIGH DENSITY POLYETHYLENE PIPE
⊕	LS LIGHT STANDARD
⊕	PVC POLYVINYL CHLORIDE PIPE
⊕	RCPC REINFORCED CONCRETE PIPE
⊕	UP UTILITY POLE
⊕	PROPOSED WATER LINE
⊕	PROPOSED SANITARY SEWER LINE



FLOODPLAIN NOTE

PORTIONS OF THIS PROPERTY ARE LOCATED IN SPECIAL FLOOD
 HAZARD AREA, ZONE AE, AS SHOWN BY FLOOD INSURANCE RATE MAP
 NUMBER 29019C0282E, DATED APRIL 19, 2017.

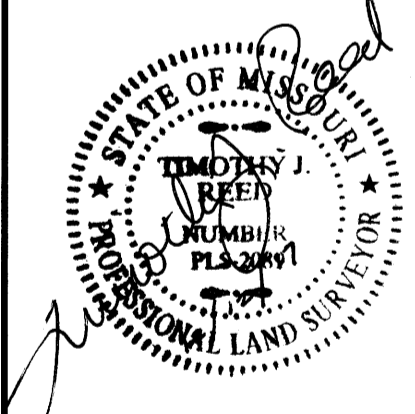
STREAM BUFFER NOTE

THIS TRACT IS NOT REGULATED BY THE CITY OF COLUMBIA
 STREAM BUFFER ORDINANCE AS DETERMINED BY THE USGS MAP FOR
 COLUMBIA QUADRANGLE, BOONE COUNTY, MISSOURI AND ARTICLE X OF
 CHAPTER 12A OF THE CITY OF COLUMBIA CODE OF ORDINANCES.

APPROVED BY THE PLANNING AND ZONING COMMISSION,
 COLUMBIA, MISSOURI, ON DECEMBER 21, 2017.

 RUSTY STRODTMAN, CHAIRPERSON

LOT 1 CENTERSTATE PLAT 14
 COLUMBIA, BOONE COUNTY, MISSOURI



TIMOTHY J. REED
 PROFESSIONAL LAND SURVEYOR
 LS-2089

IF ORIGINAL SIGNATURE OR DIGITAL
 AUTHENTICATION IS NOT PRESENT THIS
 MEDIA SHOULD NOT BE CONSIDERED A
 CERTIFIED DOCUMENT.

Date
DECEMBER 12, 2017

Revised

Surveyed: NTL Drawn: MJS

PRELIMINARY PLAT

Sheet

C1.01

1 of 1

ES&S PROJECT NO. 13733

F:\CURRENTDRAWINGS\LAST\513733\13733 PRELIM PLATING 12/12/2017