



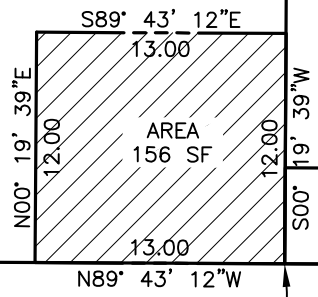
**Bouchelle's Addition to
Columbia, Missouri**
PLAT BOOK 1 PAGE 17

Quality Realty LLC
W.D. BK. 3693 PG. 96
Q.C.D. BK. 3774, PG. 91
17-405-00-23-083.00 01

(23)

(25)

1507 Ross Street



P.O.B.
TCE

Ross Street



Proposed Permanent Drainage Easement



Proposed Temporary Construction Easement



Ross Street Stormwater

1507 Ross Street Easements

Scale: 1"=10'

Drawn: J.K.M.

Date: 4/29/20