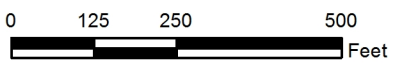


SUBJECT SITE

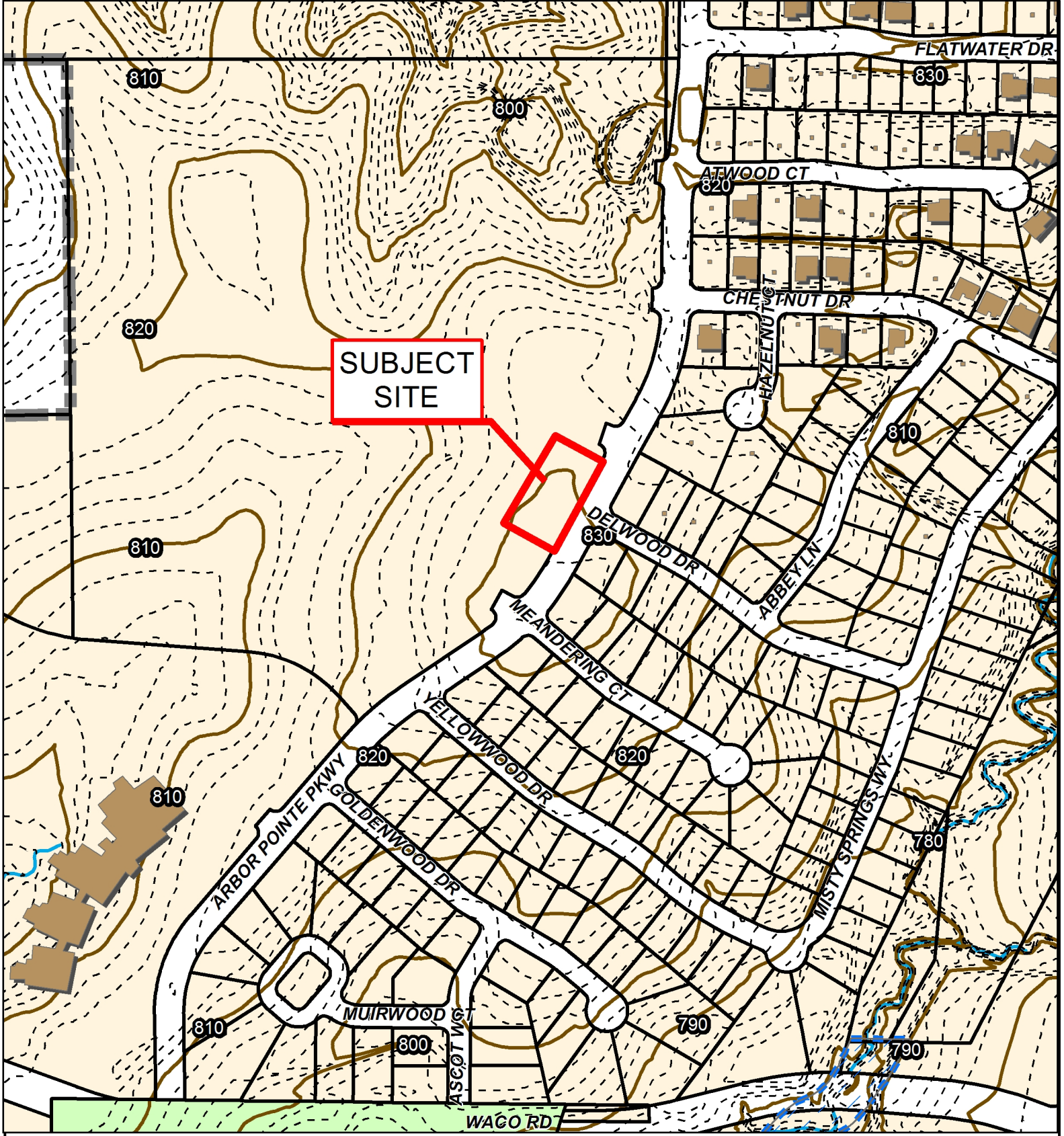
Case #16-115: Village at Arbor Walk Pool Plat Final Plat



- -
 -
 -
- City of Columbia Zoning
 - Boone County Zoning
 - 100-Year Flood Plain
 - Parcels



2015 Orthophoto Source: Boone County Assessor

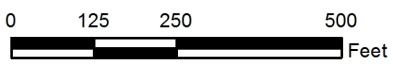


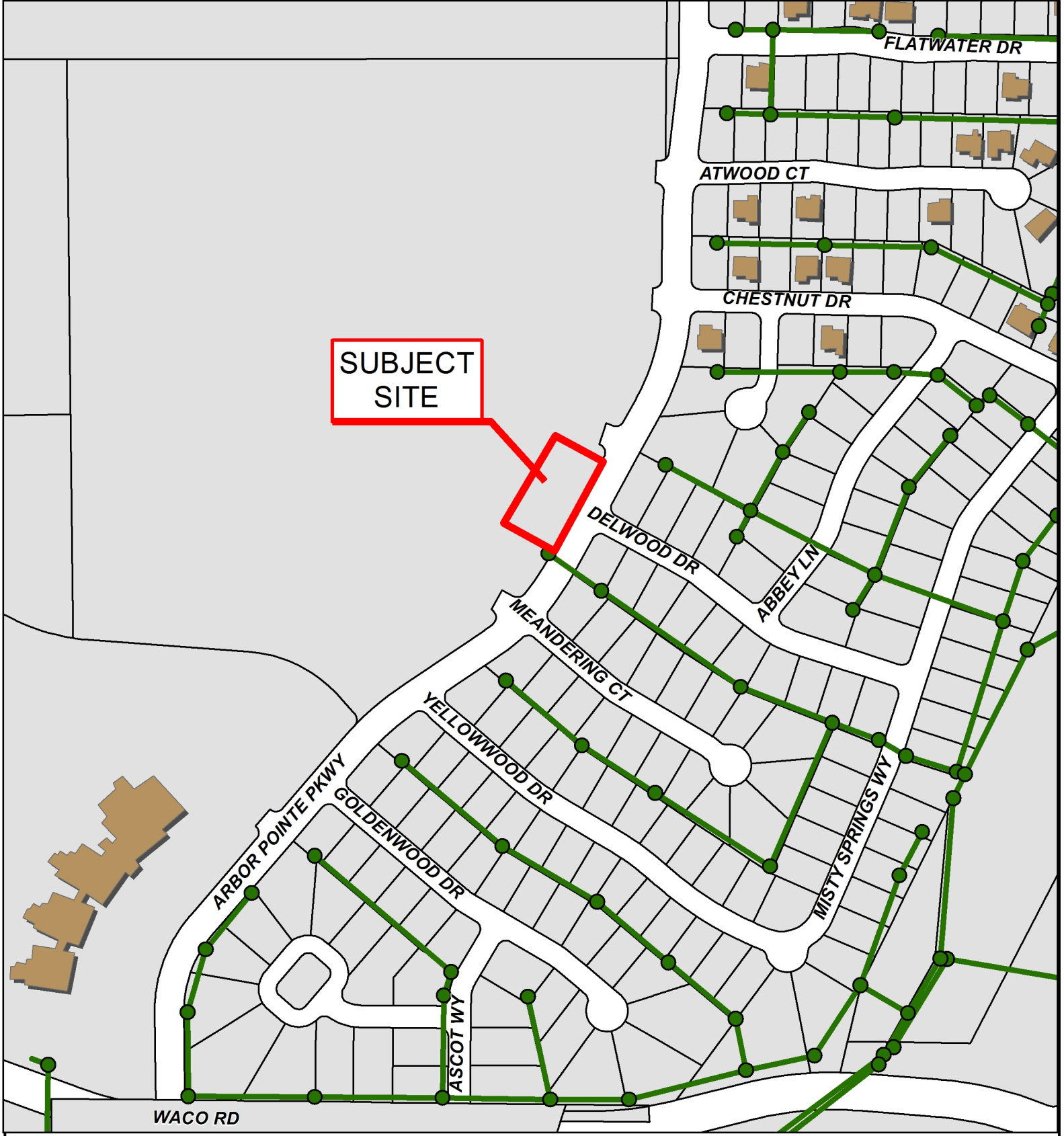
Case #16-115: Village at Arbor Walk Pool Plat

Final Plat



- 10 Foot Contour Lines
- 2 Foot Contour Lines
- 100-Year Flood Plain
- Stream
- Parcels
- Building Footprint





Case #16-115: Village at Arbor Walk Pool Plat Final Plat



- City Sanitary Structure
- City Sanitary Line
- Building Footprint
- Parcels

