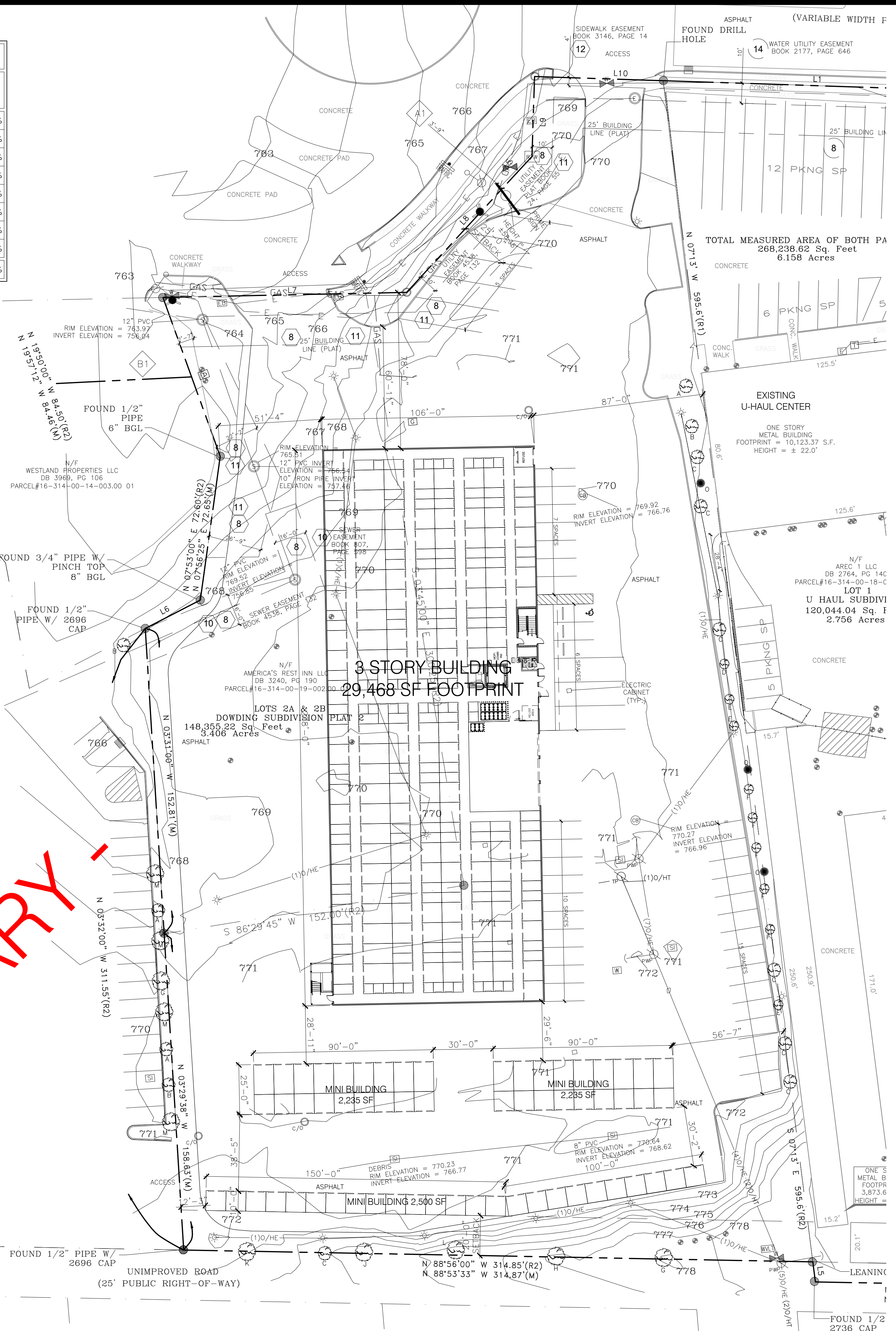


**PROPOSED MIX**

LOCKER SIZE	BUILDING A						MINI	SQ. FT.	%	TOTAL	SQ. FT.	%
	1st	SQ. FT.	%	2nd	SQ. FT.	%						
5 x 5	40	1000	5%	44	1100	5%	128	3200	5%	0	0	0%
5 x 10	109	5450	27%	111	5550	27%	330	16,500	26%	0	0	0%
7 x 8	0	0	0%	1	56	0%	1	56	0%	0	0	0%
8 x 8	0	0	0%	1	64	0%	0	0	0%	1	64	0%
7 x 10	1	70	0%	1	70	0%	2	140	1%	4	280	1%
8 x 10	1	80	0%	1	80	0%	3	240	0%	3	240	0%
10 x 10	99	9900	50%	98	9800	49%	100	10,000	50%	297	29,700	47%
10 x 15	23	3450	17%	33	4950	23%	33	4950	23%	89	13,350	21%
<b>TOTAL</b>	<b>273</b>	<b>19,950</b>	<b>100%</b>	<b>290</b>	<b>21,670</b>	<b>100%</b>	<b>290</b>	<b>21,770</b>	<b>100%</b>	<b>853</b>	<b>63,390</b>	<b>100%</b>



**SITE** SCALE: NTS

**Zoning Information**

**Project Name:** U-Haul Moving & Storage at University of Missouri  
**Municipality:** City of Columbia  
**Project Address:** 900 I-70 Dr Southwest Columbia, MO  
**Site Acre / Land Area:** 3.41 acres  
**Zone:** MC (Mixed-Use Corridor)

**Abutting Zoning District:** N- MC  
S- R-2  
E- IG  
W- MC

**Uses:** Self-storage, U-Haul truck and trailer share, U-Box, and retail

**Setbacks (Principal Structures):** Front yard setback: 25 ft  
Side yard corner lot setback: 15 ft  
Side yard general lot setback: 0 ft  
Rear yard setback: 20 ft

**Maximum Building Height:** 45 ft / 4 stories

**Parking:** Self-Service Storage Facility: 1 space per 20 storage units = 42.65 SPACES

**TOTAL PARKING PROVIDED** 43 SPACES

**Minimum Landscaped Area:** 15% 15.2% PROVIDED

**Landscaping:**

- All paved areas with more than 40 ft of length within 25 ft of a street ROW shall have at least a 6 ft wide landscaped buffer
- One street tree shall be required for every 60 ft of street frontage

**Buffer / Screening:**

- Where abutting residential, a level 3 buffer is required. This includes a 10 ft wide landscape buffer and 8 ft tall screening device.

- PRELIMINARY -

SHEET NOTES:

NO.	DATE	INITIALS	NOTES
1			
2			
3			
4			
5			
6			
7			
8			

REVISIONS:

PROFESSIONAL SEAL:

PRELIMINARY DOCUMENTS - NOT FOR CONSTRUCTION, FOR INFORMATION ONLY

ARCHITECT LOGO:

**AMERCO REAL ESTATE COMPANY**

CONSTRUCTION DEPARTMENT  
2727 NORTH CENTRAL AVENUE  
PHOENIX, ARIZONA 85004  
P: (602) 263-6502

SITE ADDRESS:  
U-HAUL AT UNIVERSITY OF MISSOURI  
800 BUS LOOP 70 W  
COLUMBIA, MO 65203

SHEET CONTENTS:  
PRELIMINARY SITE PLAN

735066

DRAWN: MM  
CHECKED: -  
DATE: 03/22/2021

SP-1

© 2021 AMERCO REAL ESTATE COMPANY 735066 A11.DWG