

# CONSOLIDATED WATER

BOONE COUNTY, MISSOURI

Committed to Providing Clean, Safe Water for All Our Customers

- Legend**
- Hydrant
  - District Control Valve
  - Existing Valves
  - 1" City Limits
  - 16" Road Lines
  - Sheet Boundary

## Exhibit 1

### Airport Road Main Bill of Sale



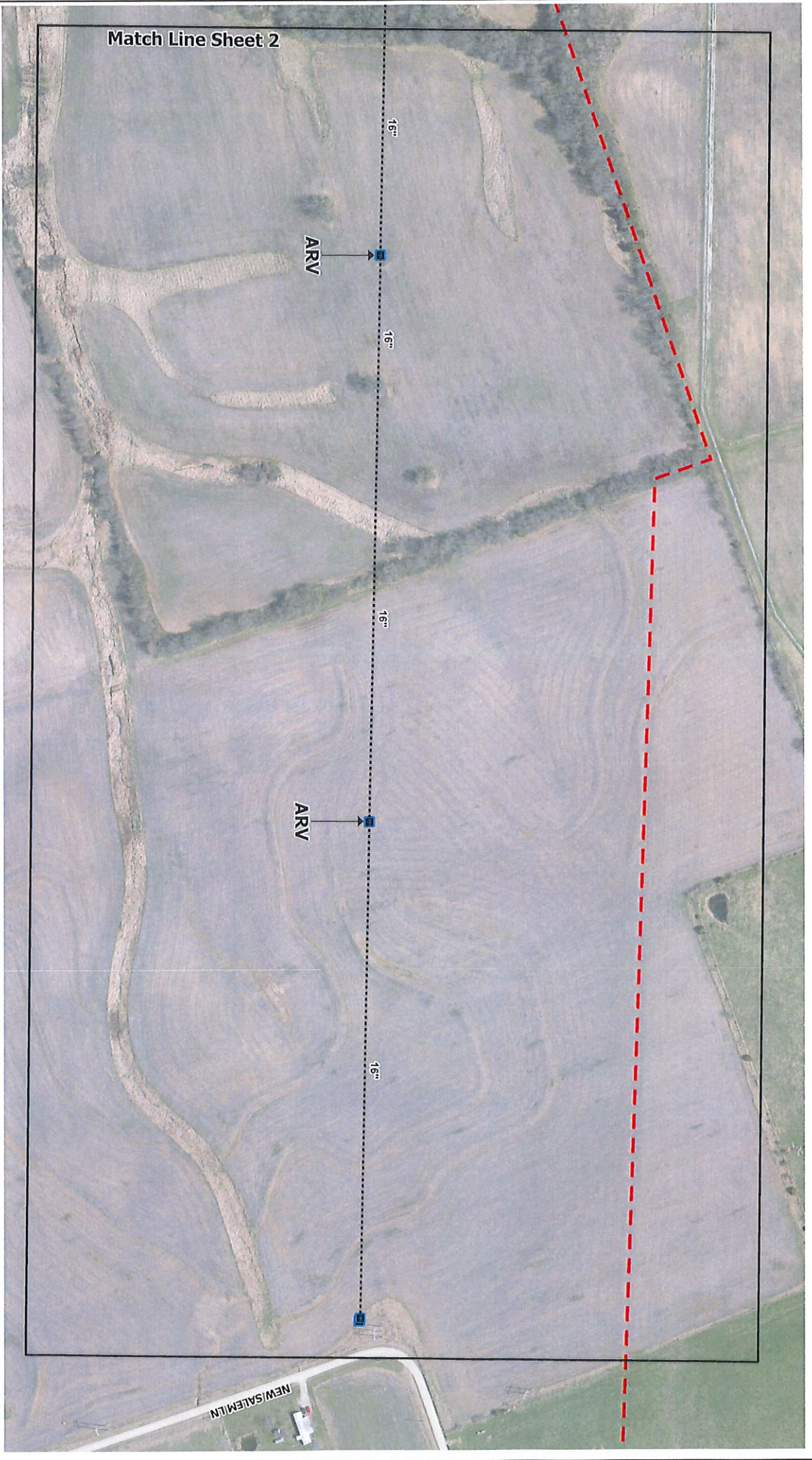
#### Sheet Layout

Drawn By:

Checked by:

Date:

Match Line Sheet 2



**CONSOLIDATED WATER**  
 Boone County, Missouri

Committed to Providing Clean, Safe Water for All Our Customers

- Legend**
- Hydrant
  - District Center Valve
  - Building Valve
  - 12"
  - 16"
  - OR Lines
  - Parcel Lines
  - Sheet Boundary

**Exhibit 1**

**Airport Road Main Bill of Sale**



**Sheet No. 1**

Drawn By:

Checked by:

Date:

NEW SALEM LN

**Legend**

- Hydrant
- District Control Valve
- Existing Valve
- 12"
- 16"
- City Limits
- Road Lines
- Street Boundary

**Exhibit 1**

**Airport Road Main Bill of Sale**

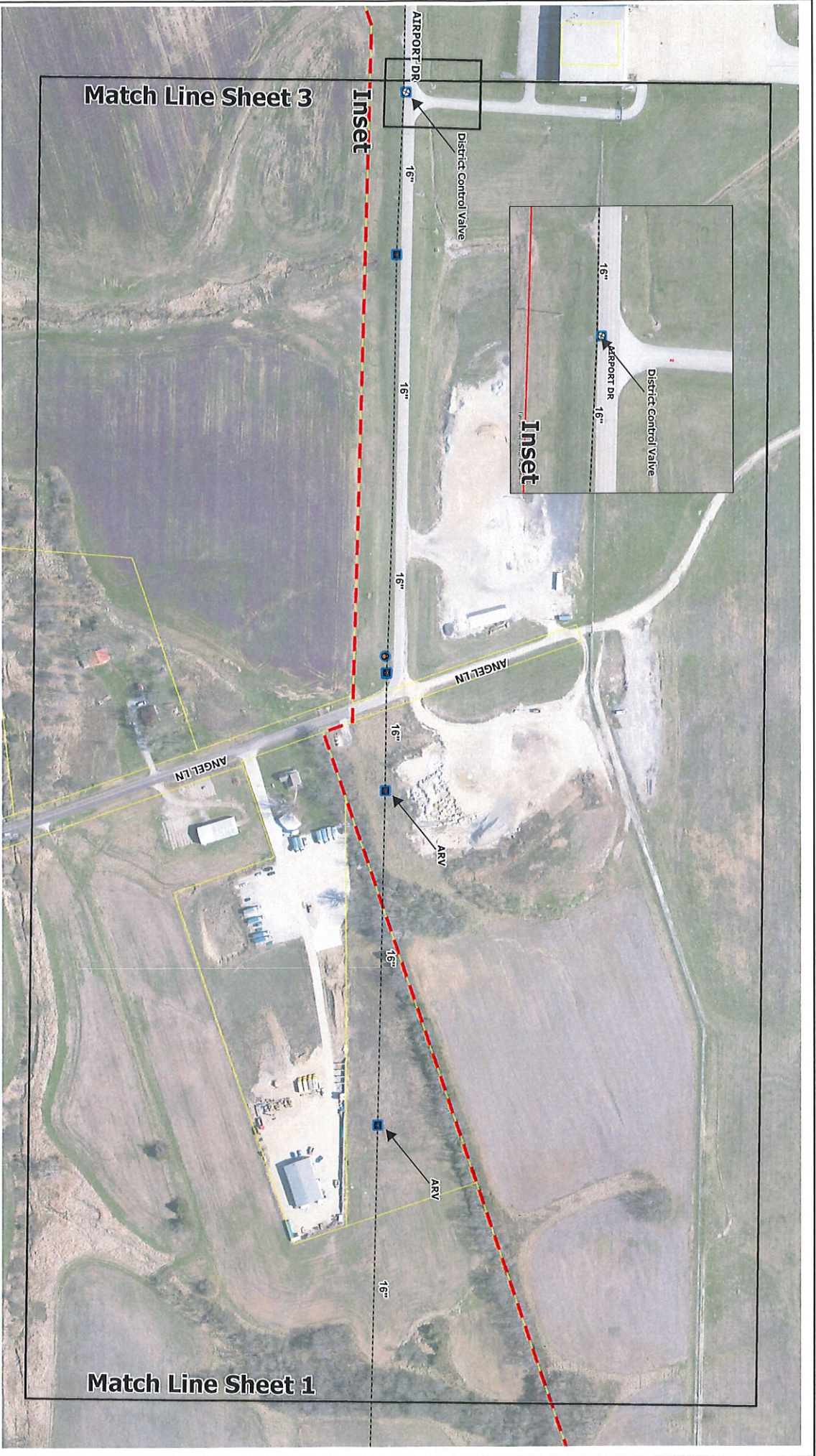


**Sheet No. 2**

Drawn By:

Checked by:

Date:



Match Line Sheet 3

Inset

Inset

Match Line Sheet 1

- Legend**
- District Control Valve
  - Hydrants
  - Existing Valves
  - 12"
  - 16"
  - Parcel Lines
  - City Limits
  - Sheet Boundary



**Exhibit 1**

**Airport Road Main Bill of Sale**







**Sheet No. 3**

Drawn By:

Checked by:

Date:

- Legend**
-  Hydrant
  -  District Control Valve
  -  Building Valve
  -  12"
  -  16"
  -  Road Lines
  -  City Limits
  -  Sheet Boundary

**Exhibit 1**

**Airport Road Main Bill of Sale**

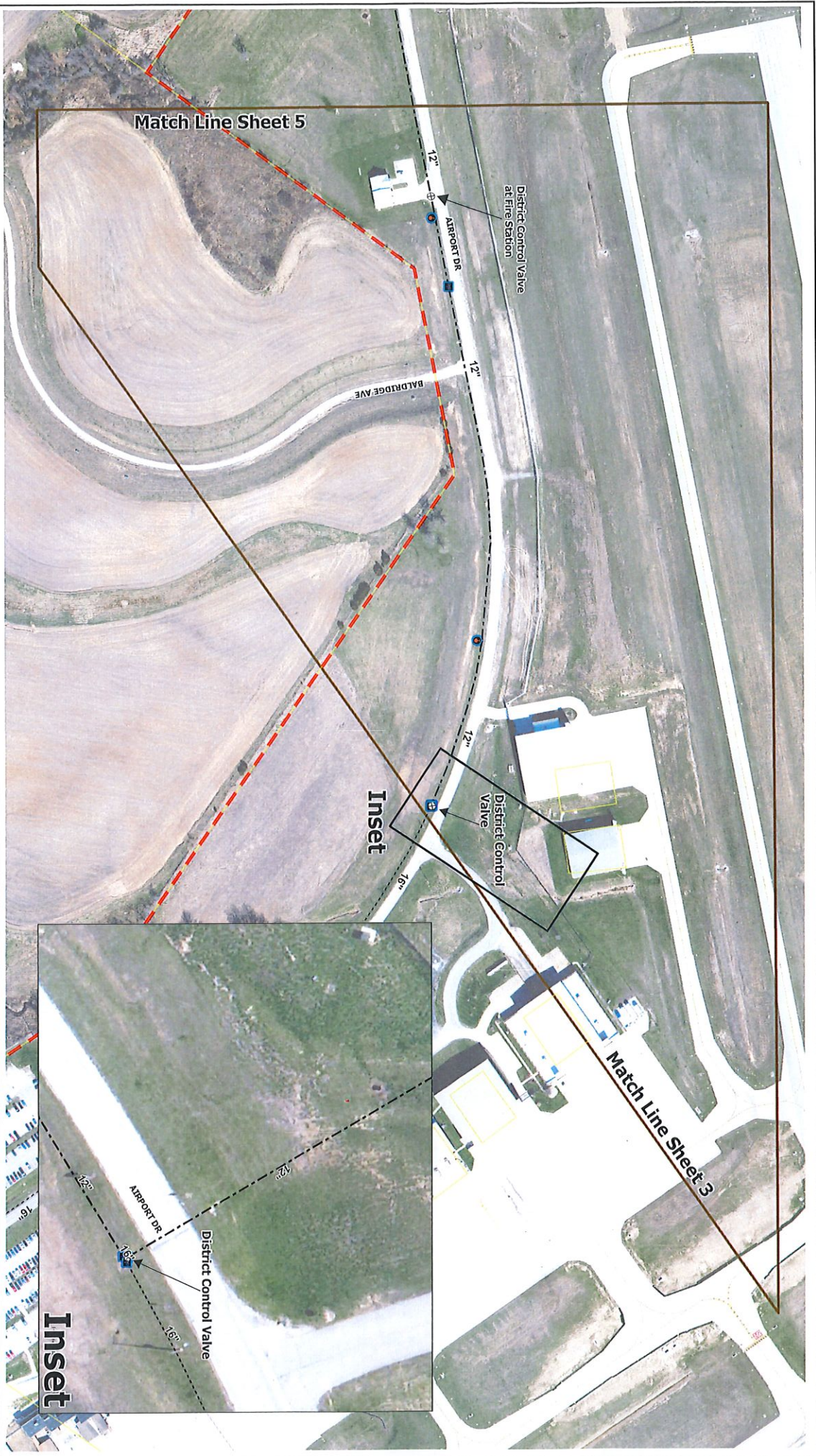


Sheet No. 4

Drawn By:

Checked by:

Date:



- Legend**
- Hydrant
  - District Center Valve
  - Existing Valve
  - 12"
  - 15"
  - Parcel Lines
  - City Limits
  - Sheet Boundary



**Exhibit 1**

**Airport Road Main Bill of Sale**



Sheet No. 5

Drawn By:

Checked by:

Date:

Match Line Sheet 4