

Source: Nearmap. <https://www.nearmap.com/us/en>

## Case # 125-2025 - 801 College Avenue

### Conditional Use Permit



Parcel Data Source: Boone County Assessor

Created by The City of Columbia - Community Development Department



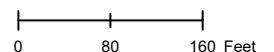
Columbia City Limit

City Property

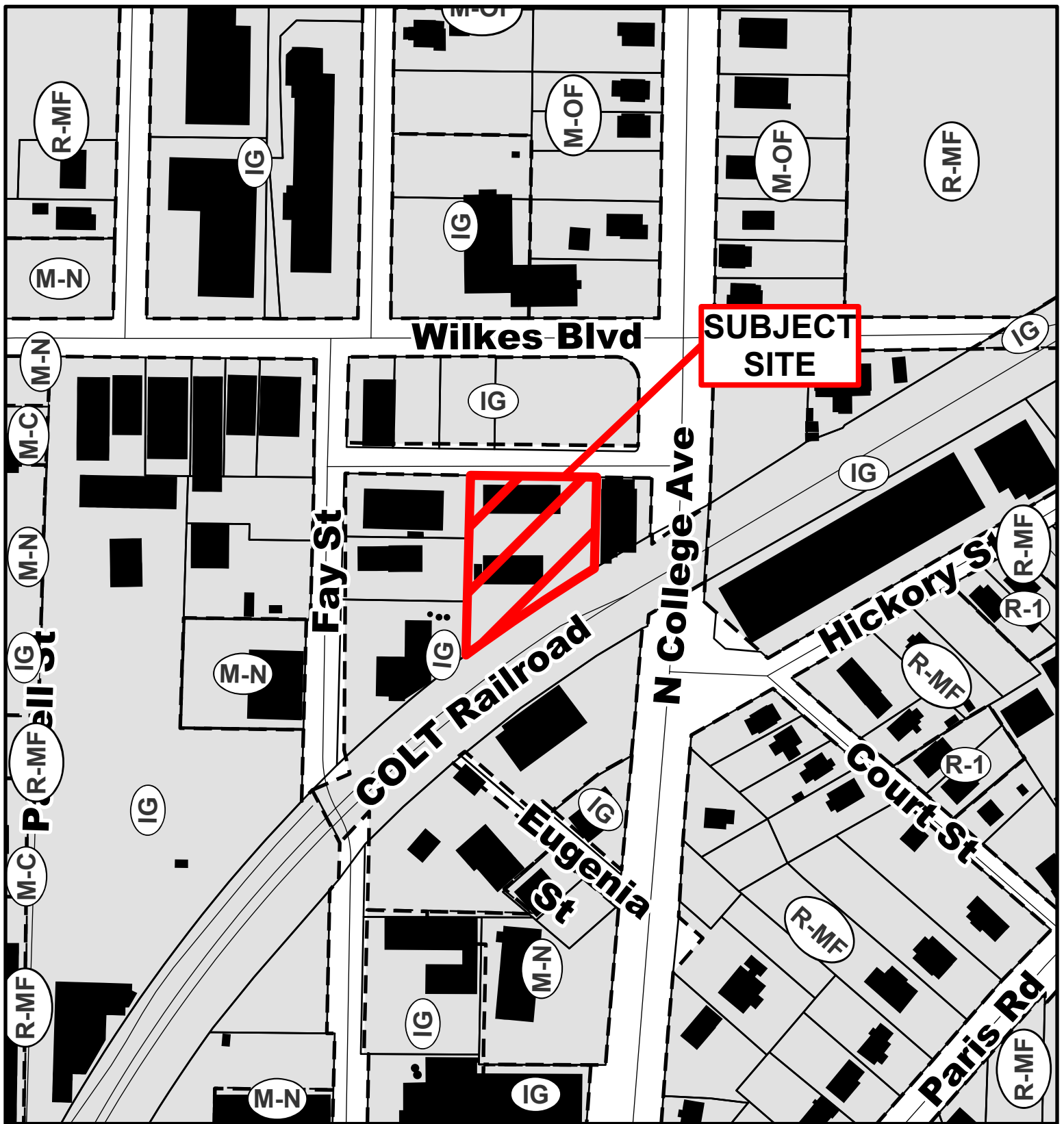
City Zoning

Parcels

N



2024 Imagery: NearMap




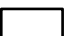

## Case # 125-2025 - 801 College Avenue

### Conditional Use Permit



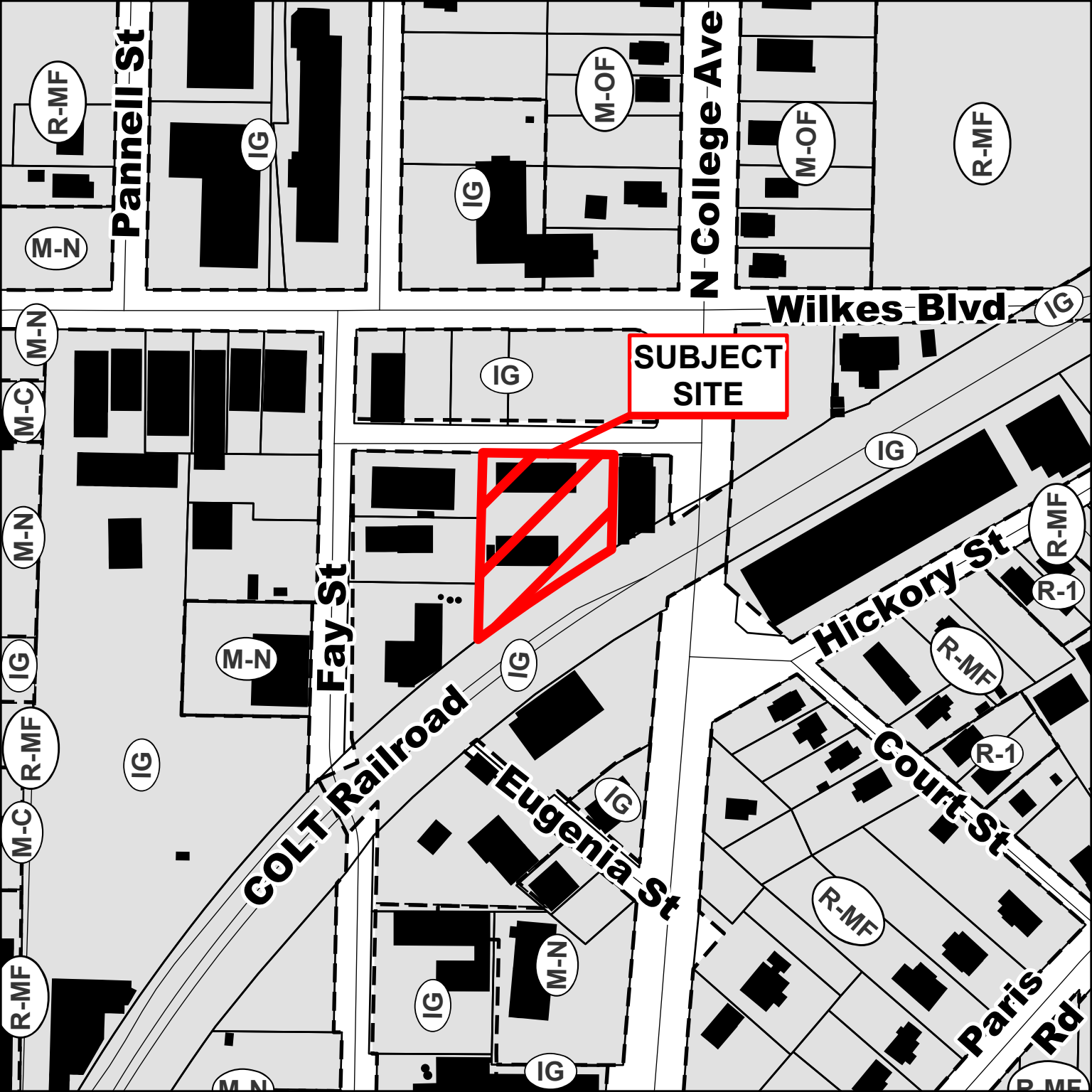
Parcel Data Source: Boone County Assessor

Created by The City of Columbia - Community Development Department

 Columbia City Limit  Parcels  
 City Zoning



0 80 160 Feet



Pannell St

N College Ave

Wilkes Blvd

Fay St

Hickory St

Court St

Paris Rd

Eugenia St

COLT Railroad

SUBJECT SITE

R-MF

M-N

M-N

M-C

M-N

IG

R-MF

M-C

R-MF

M-N

IG

IG

M-OF

M-OF

R-MF

IG

IG

IG

M-N

IG

IG

IG

IG

R-MF

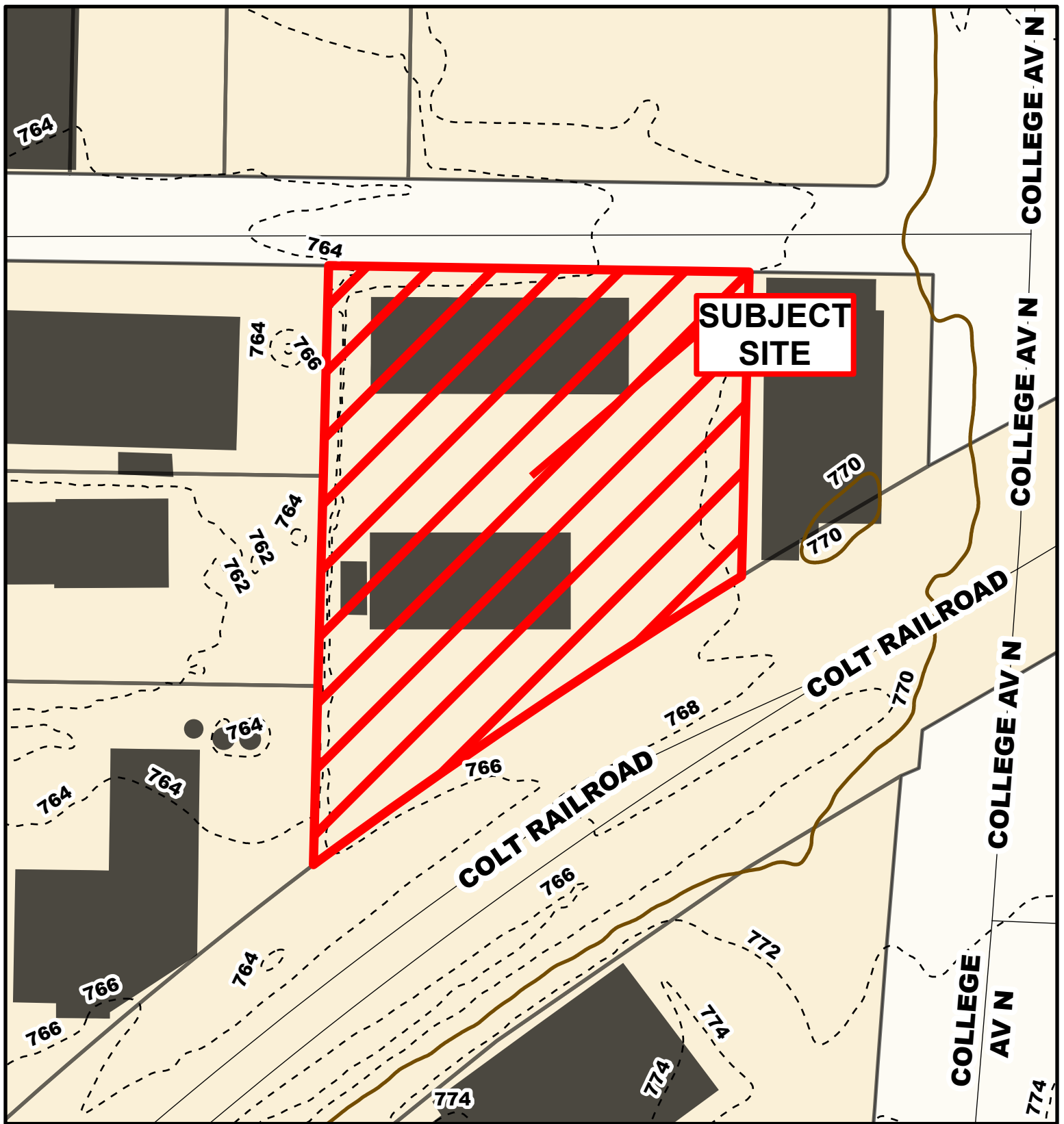
R-1

R-MF

R-1

R-MF

R-MF



## Case # 125-2025 - 801 College Avenue

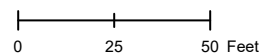
### Conditional Use Permit

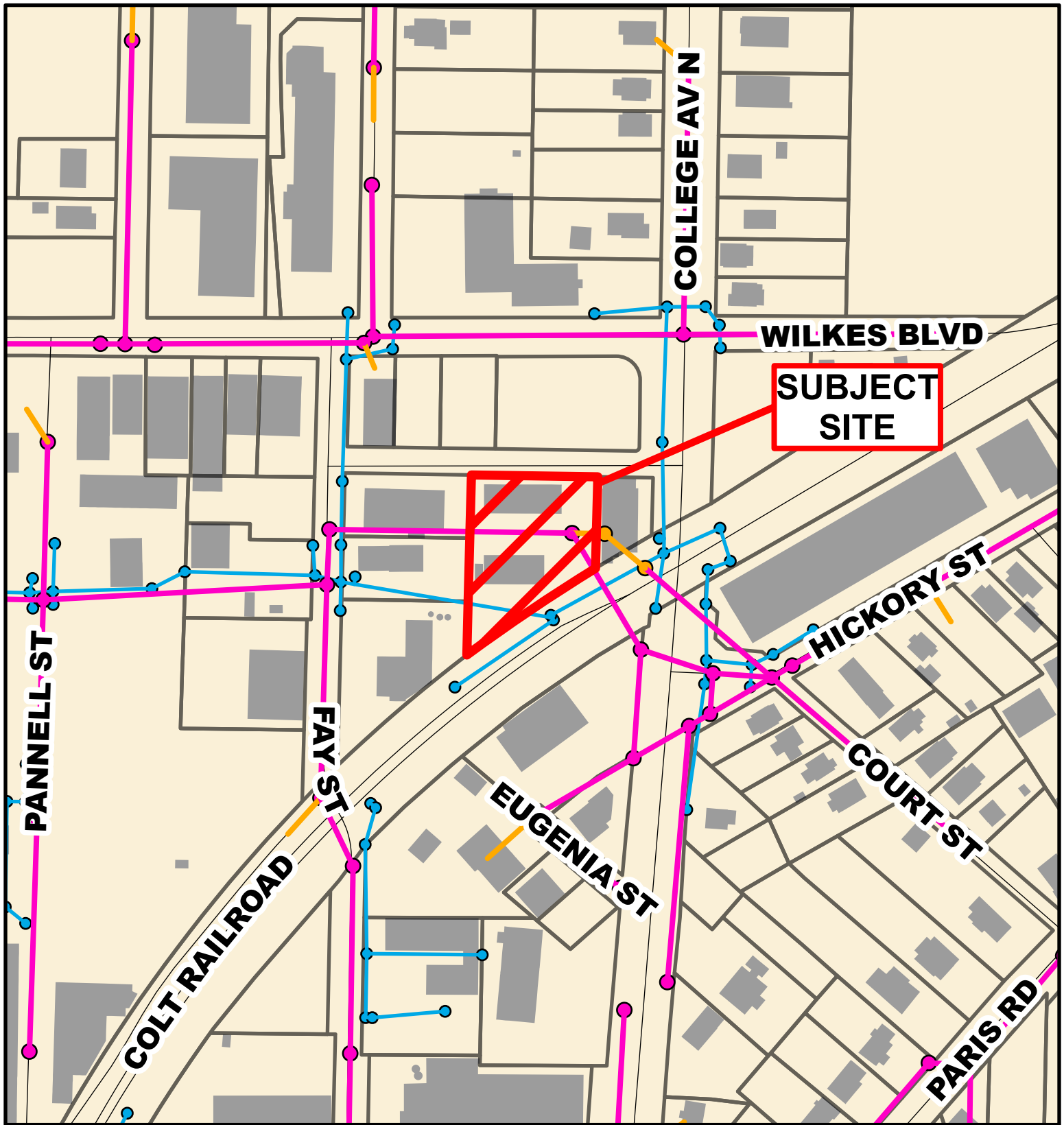


Parcel Data Source: Boone County Assessor

Created by The City of Columbia - Community Development Department

- 10 Foot Contour Lines
- 2 Foot Contour Lines
- City of Columbia
- Parcels





## Case # 125-2025 - 801 College Avenue

### Conditional Use Permit



Parcel Data Source: Boone County Assessor  
 Created by The City of Columbia - Community Development Department

- City Sanitary Line
- City Storm Lines
- Private Sanitary Line
- Parcels
- Columbia City Limit



0 80 160 Feet