

Case # 134-2024 - 3307 Barberry Avenue

Final Plat & Design Adjustment



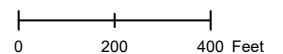
City Zoning Parcels

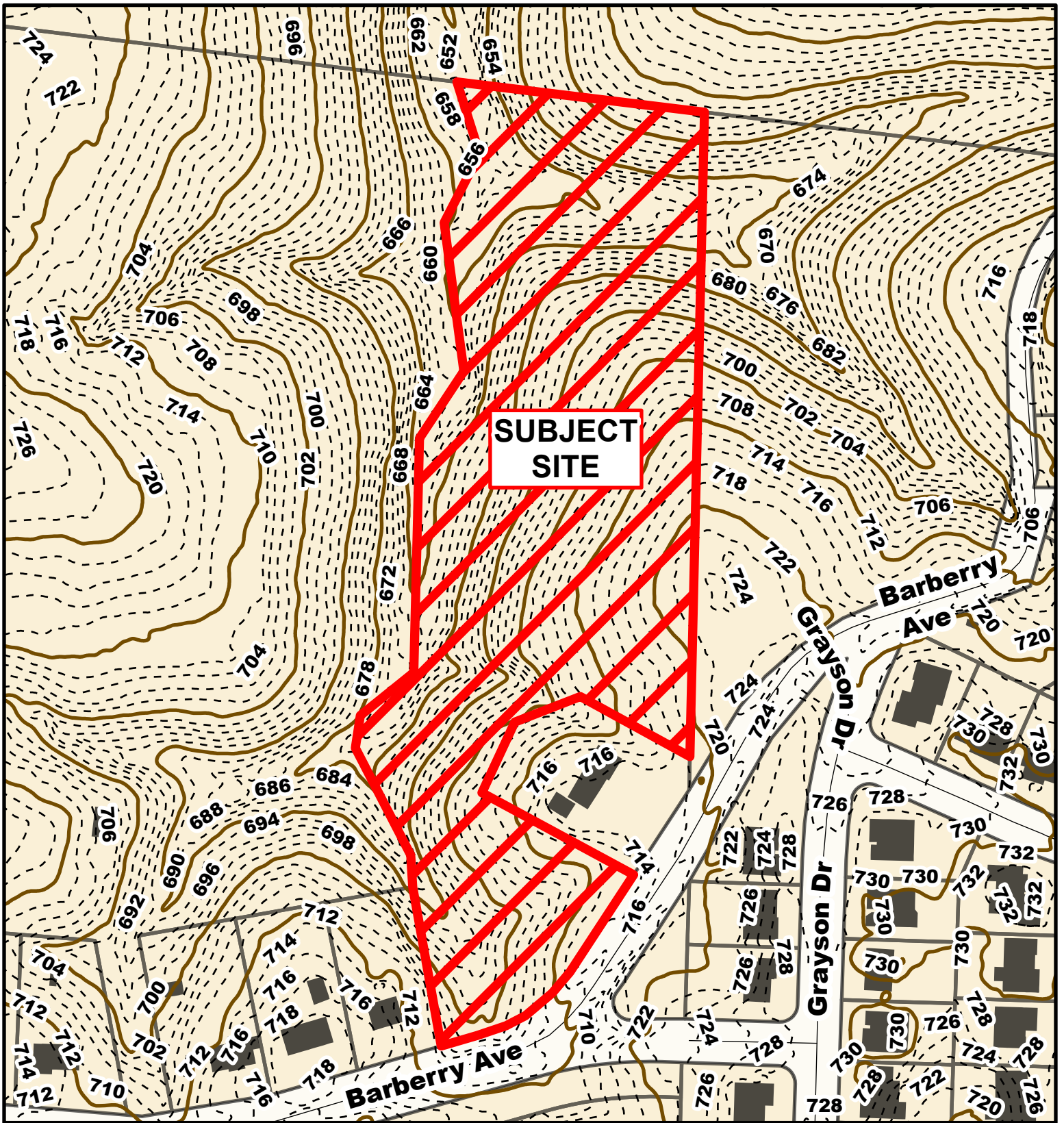


Parcel Data Source: Boone County Assessor

Created by The City of Columbia - Community Development Department

2022 Imagery: NearMap



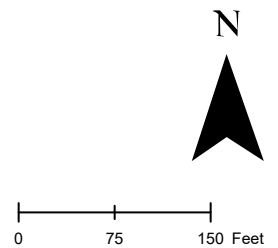


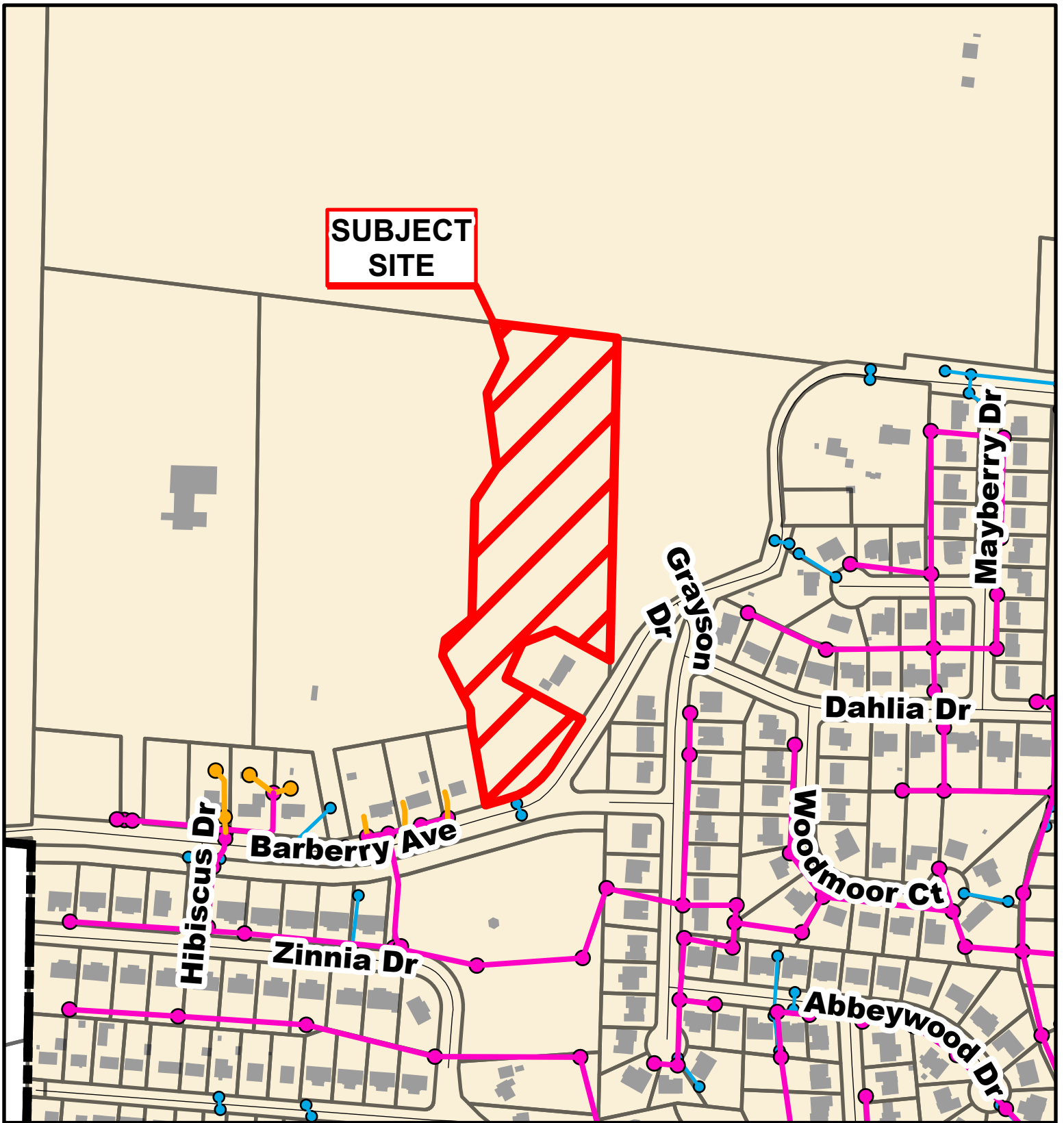
Case # 134-2024 - 3307 Barberry Avenue Final Plat & Design Adjustment



Parcel Data Source: Boone County Assessor
Created by The City of Columbia - Community Development Department

- 10 Foot Contour Lines
- 2 Foot Contour Lines
- Parcels





Case # 134-2024 - 3307 Barberry Avenue
Final Plat & Design Adjustment



- City Sanitary Line
- City Storm Lines
- Private Sanitary Line
- Parcels

