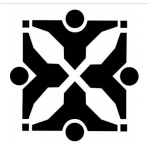


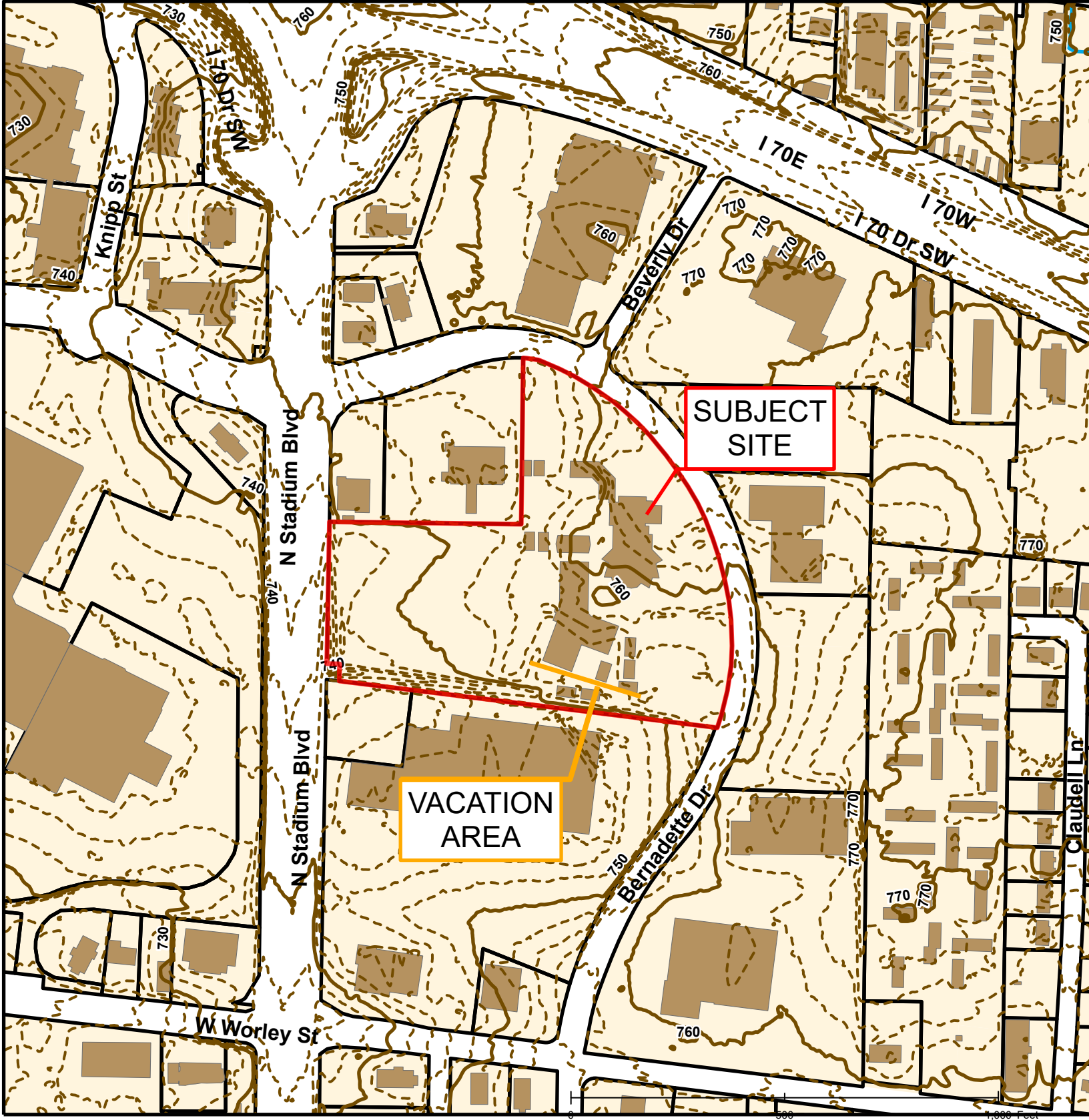


# #17-202: Lady of Lourdes Easement Vacation

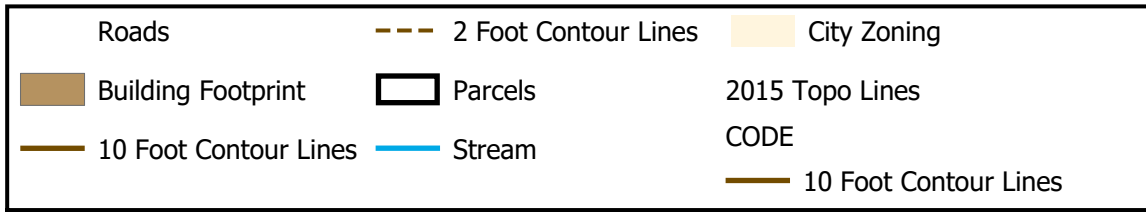
	Roads		Columbia City Limit
	City Zoning		CityViewparcels
	Parcels		







## #17-202: Lady of Lourdes Easement Vacation

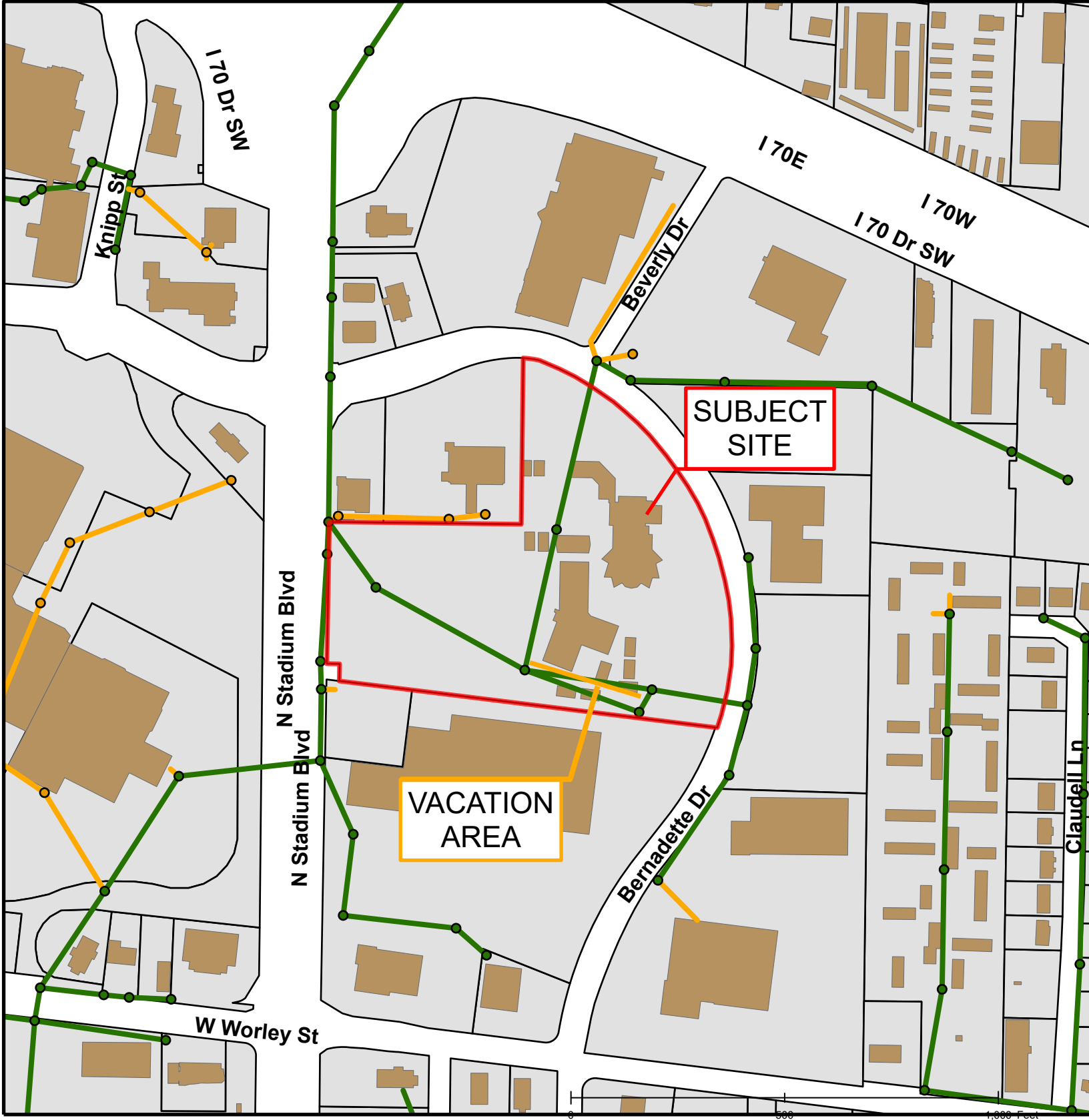


Created by The City of Columbia - Community Development Department








Parcel Data Source: Boone County Assessor

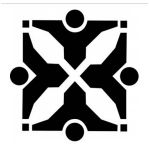
2015 Imagery: Boone County Assessor's Office

Hillshade Data: Boone County GIS Office



## #17-202: Lady of Lourdes Easement Vacation

 City Sanitary Structure	 City Sanitary Line	 Building Footprint
 Private Sanitary Structure	 Private Sanitary Line	 Parcels
Roads	 Columbia City Limit	CityViewparcels



Created by The City of Columbia - Community Development Department

Parcel Data Source: Boone County Assessor

2015 Imagery: Boone County Assessor's Office

Hillshade Data: Boone County GIS Office