

TREE PRESERVATION EASEMENT

THIS INDENTURE, made on the 12th day of December, 2017 (hereinafter referred to as “Effective Date”), by and between **Lutheran Senior Services**, a not for profit corporation and its successors and assigns (hereinafter referred to as “Grantor”), and the City of Columbia, Missouri, a municipal corporation (hereinafter referred to as “Grantee” or “City”), Grantee’s mailing address Post Office Box 6015, Columbia, MO 65205;

WHEREAS, Grantor is the sole owner in fee simple of certain real property in the City of Columbia, Missouri (hereinafter referred to as “Property”); and

WHEREAS, the Property contains areas defined as climax forest in Section 29-1.11(a) of the Code of Ordinances of the City of Columbia; and

WHEREAS, Grantor wishes to preserve and protect the natural and undisturbed beauty and character of the climax forest areas described herein with a Tree Preservation Easement;

WITNESSETH:

That the Grantor, for good and valuable consideration, the receipt of which is hereby acknowledged, does hereby grant unto the City, its successors and assigns, an exclusive easement for the right, privilege, authority to preserve and protect the trees, roots, and area over, under, across, and upon the following described tree preservation areas which are the areas designated “Tree Preservation Easement” on the depiction attached hereto as Exhibit A, owned by Grantor, situated in the County of Boone, State of Missouri, and further described as:

Legal Description attached as Exhibit A and incorporated herein by reference

(hereinafter referred to as “Easement Area”)

Except as permitted herein, no action of any kind may be undertaken to harm or remove a deciduous native Missouri tree located within the boundary of a Tree Survey, attached hereto as Exhibit B which shall be prepared and signed by a International Certified Arborist or design professional. The Tree Survey shall identify all trees located within the Easement Area that are 4” Dbh or greater. Such trees shall be graphically shown on the Tree Survey and fully listed in

Exhibit B (“specified trees”). Grantor will not cut or remove the specified trees within the Easement Area without permission from the City.

Grantor will also restrict and forbid any activity within the Easement Area that will impede the protection and preservation of the specified trees, will not allow the construction or development of any buildings, billboards, structures, or facilities of any kind over, under, across, and upon the Easement Area that will impact the specified trees, and will not take any other action that may harm the specified trees within the Easement Area.

This grant includes the right of the City, its officers, agents, and employees, to enter upon the Easement Area at any time for the purpose of inspecting, exercising, and enforcing any of the rights herein granted, including restoring the Easement Area to its agreed upon nature. City may assess the reasonable costs of restoration against the Property and the Grantor waives all rights to contest those costs. Further, Grantee may enforce the terms of this Easement by any proceeding in law or in equity to restrain violation, to compel compliance, or to recover damages, including attorneys’ fees and costs of the enforcement actions. The City may trim, clear or remove, at any time from the Easement Area any tree, brush, structure or obstruction of any kind or character whatsoever installed, constructed or grown upon the Easement Area after the Effective Date without the consent of Grantee which, in the sole reasonable judgment of the City, endangers the safety of or interferes with the operation and maintenance of City facilities or interferes with any other rights granted herein.

Grantee’s ingress and egress to and from the Easement Area for the purpose of exercising any of the rights herein granted shall be from the adjacent public right of way or easement.

Grantee is prohibited from constructing or installing any utilities or right of ways within the Easement Area that will reduce the undeveloped climax forest areas to be preserved.

The Grantor covenants, subject to liens and encumbrances of record as of the Effective Date, that it is the owner of the above-described land and has the right and authority to make and execute this Tree Preservation Easement.

This Tree Preservation Easement does not convey a right to the public to use the Easement Area nor does it convey any right of possession in the Easement Area to the public or the Grantee. Access by the Grantee to the Easement Property is limited to access necessary for purposes of inspection, preservation, and enforcement as specified herein.

This Tree Preservation Easement runs with the land and is binding on the Grantor, its successors and assigns, and inures to the benefit of the Grantee, its successors and assigns.

[SIGNATURE PAGE FOLLOWS]

IN WITNESS WHEREOF, Grantor has caused these presents to be signed by its authorized member the day and year first above written.

GRANTOR:

Lutheran Senior Services

By: Mark Schoedel

Mark Schoedel

Title: Vice President of Construction & Technology

STATE OF MISSOURI)

)ss.

COUNTY OF BOONE)

On this 12th day of December, 2017, before me, a Notary Public in and for said state, personally appeared **Mark Schoedel, Vice President of Construction and Technology of Lutheran Senior Services***, known to me to be the person described in and who executed the above easement and acknowledged to me that such easement was executed the same as a free act and deed for the purposes therein stated and that they have been granted the authority to execute the same.

** = a not for profit corporation*

IN TESTIMONY WHEREOF, I have hereunto set my hand and affixed my official seal the day and year last written above.

By: Betty Lou Cobb
Notary Public

My commission expires: 12-6-2019.

BETTY LOU COBB
Notary Public - Notary Seal
State of Missouri
County of Boone
My Commission Expires December 6, 2019
Commission #15690689

EXHIBIT A

DESCRIPTION OF TREE PRESERVATION AREA
FOR LENOIR SUBDIVISION PLAT 2
LUTHERAN SENIOR SERVICES, OWNER
JOB 16049.04

DECEMBER 18, 2017

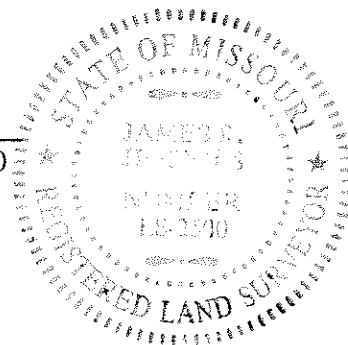
A TRACT OF LAND BEING ALL OF THE TREE PRESERVATION EASEMENT SHOWN ON LOT 2A OF LENOIR SUBDIVISION PLAT 2, RECORDED IN PLAT BOOK ____, PAGE ____, LOCATED IN THE SOUTHEAST QUARTER OF SECTION 29, TOWNSHIP 48 NORTH, RANGE 12 WEST, COLUMBIA, BOONE COUNTY, MISSOURI, BEING THE LOTS DESCRIBED BY THE WARRANTY DEED RECORDED IN BOOK 2698, PAGE 145 AND BEING MORE PARTICULARLY DESCRIBED AS FOLLOWS:

COMMENCING AT THE SOUTHEAST CORNER OF SAID SECTION 29-48-12; THENCE WITH THE SECTION LINE N1°36'45"E, 1806.80 FEET TO THE SOUTH LINE OF THE GREENSPACE CONSERVATION EASEMENT SHOWN ON LENOIR SUBDIVISION PLAT 2; THENCE LEAVING SAID SECTION LINE AND WITH SAID SOUTH LINE, S75°06'15"W, 143.40 FEET; THENCE N38°07'00"W, 80.00 FEET TO THE EASTERNMOST CORNER OF THE TREE PRESERVATION EASEMENT SHOWN ON SAID LENOIR SUBDIVISION PLAT 2 AND THE POINT OF BEGINNING;

THENCE FROM THE POINT OF BEGINNING, WITH THE LINES OF SAID TREE PRESERVATION EASEMENT, S63°26'45"W, 705.37 FEET; THENCE N83°23'40"W, 641.90 FEET; THENCE N11°42'15"W, 118.64 FEET; THENCE N43°57'50"W, 108.19 FEET; THENCE N1°54'25"E, 52.96 FEET TO THE SOUTH LINE OF THE 20-FOOT SEWER EASEMENT RECORDED IN BOOK 601, PAGE 329; THENCE WITH SAID SOUTH LINE, S89°29'15"E, 85.36 FEET; THENCE LEAVING SAID SOUTH LINE, S63°48'15"E, 210.90 FEET; THENCE S88°03'30"E, 350.00 FEET; THENCE N69°55'20"E, 272.52 FEET TO SAID SOUTH LINE OF THE SEWER EASEMENT RECORDED IN BOOK 601, PAGE 329; THENCE WITH SAID SOUTH LINE, N80°39'45"E, 118.26 FEET TO THE LINE BETWEEN LOTS 1A AND 2A OF SAID LENOIR SUBDIVISION PLAT 2; THENCE WITH SAID COMMON LINE, S88°03'30"E, 369.18 TO THE POINT OF BEGINNING AND CONTAINING 5.43 ACRES.

James R. Jeffries
JAMES R. JEFFRIES, PLS-2500

Dec. 18, 2017
DATE

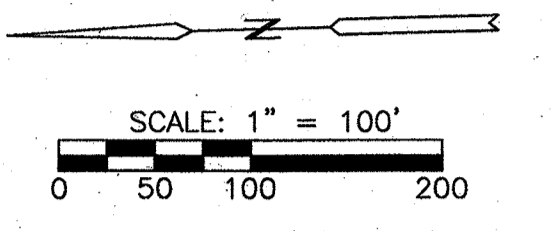
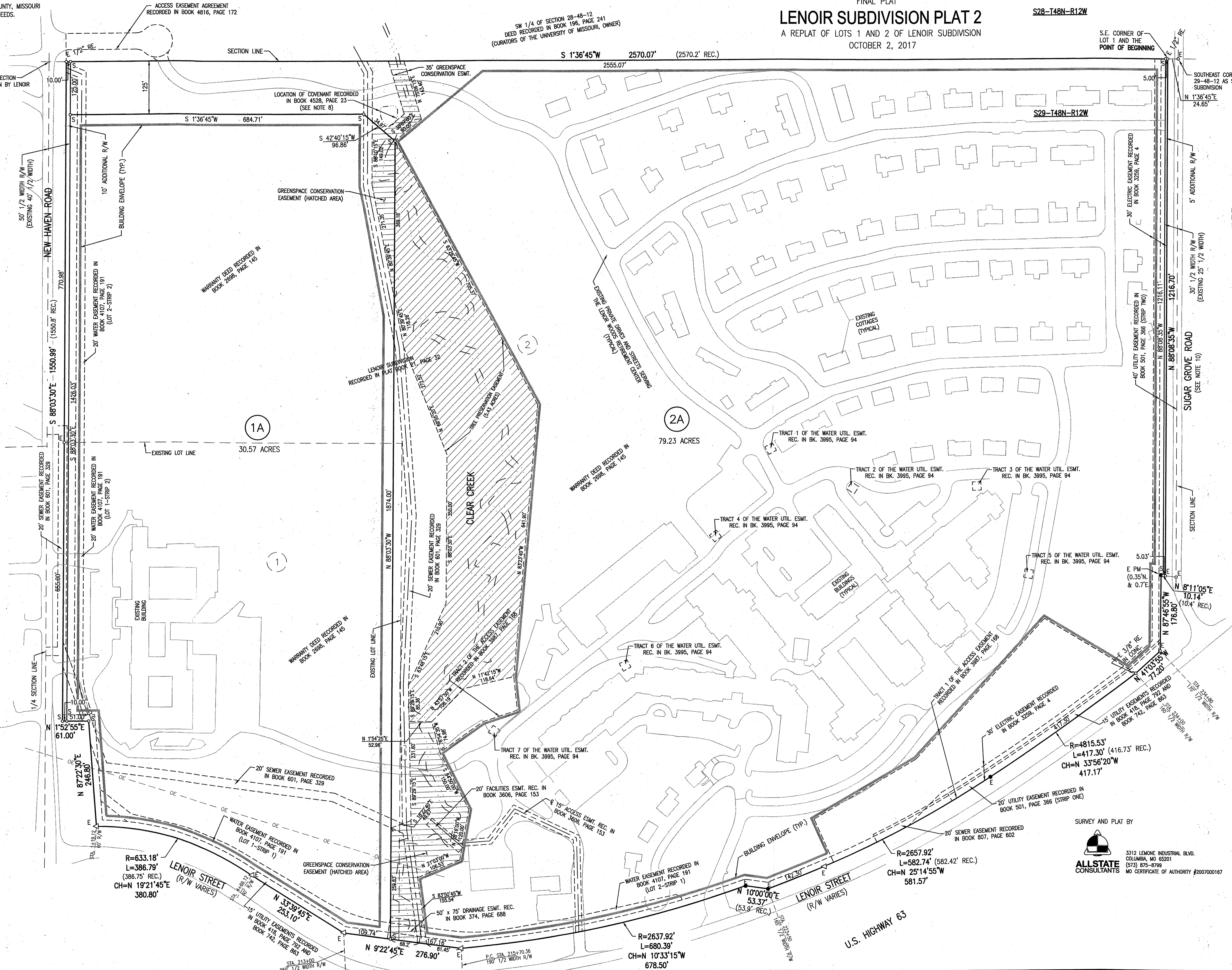


FINAL PLAT
LENOIR SUBDIVISION PLAT 2
A REPLAT OF LOTS 1 AND 2 OF LENOIR SUBDIVISION
OCTOBER 2, 2017

S28-T48N-R12W

S33-T48N-R12W

S32-T48N-R12W



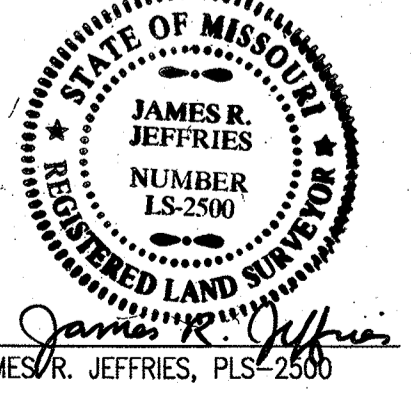
BEARINGS ARE REFERENCED TO THE GRID NORTH FROM THE MISSOURI STATE PLANE COORDINATE SYSTEM (CENTRAL ZONE) FROM GPS OBSERVATIONS.

LEGEND

- IRON PIPE (UNLESS NOTED OTHERWISE)
- E EXISTING 1/2" IRON PIPE (UNLESS OTHERWISE NOTED)
- S SET 5/8" REBAR W/CAP "A.C. 2007000167"
- PERMANENT MONUMENT (5/8" REBAR W/ALUM. CAP)
- △ RIGHT-OF-WAY MARKER
- I.P. IRON PIPE
- RE. REBAR
- (REC.) RECORD MEASUREMENT
- ⊙ CENTERLINE
- ▨ BUILDING ENVELOPE AREA
- ▨ TREE PRESERVATION EASEMENT
- ▨ GREENSPACE CONSERVATION EASEMENT

COPY
OF THE FINAL PLAT
SUBMITTED FOR APPROVAL

EXHIBIT A
PAGE 2 OF 2



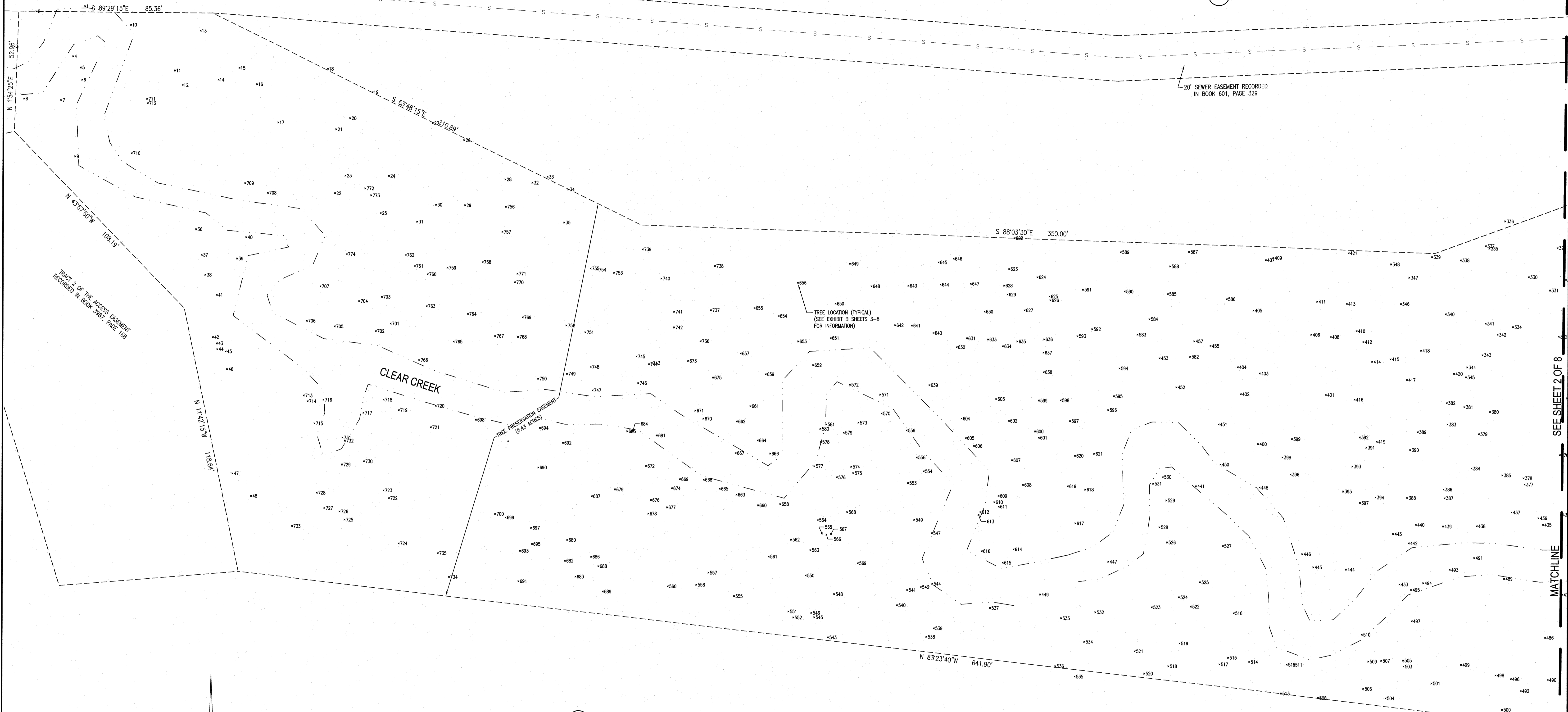
James R. Jeffries
Nov. 21, 2017
DATE

SURVEY AND PLAT BY
ALLSTATE CONSULTANTS
3312 LEMONE INDUSTRIAL BLVD.
COLUMBIA, MO 65201
(573) 875-8799
MO CERTIFICATE OF AUTHORITY #2007000167

LOT 1A
LOT 2A

S 88°03'30"E 1874.00'

LENOIR SUBDIVISION PLAT 2
RECORDED IN PLAT BOOK PAGE 1A
2A



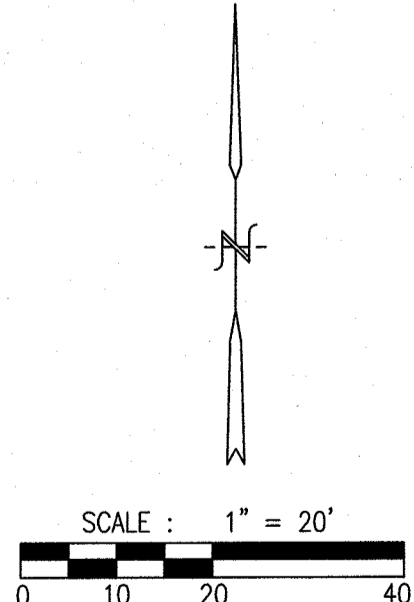
TRACT 2 OF THE ACCESS EASEMENT
RECORDED IN BOOK 3887, PAGE 108

CLEAR CREEK

TREE PRESERVATION EASEMENT
(6.43 ACRES)

TREE LOCATION (TYPICAL)
(SEE EXHIBIT B SHEETS 3-8
FOR INFORMATION)

20' SEWER EASEMENT RECORDED
IN BOOK 601, PAGE 329



2A
LENOIR SUBDIVISION PLAT 2
RECORDED IN PLAT BOOK PAGE

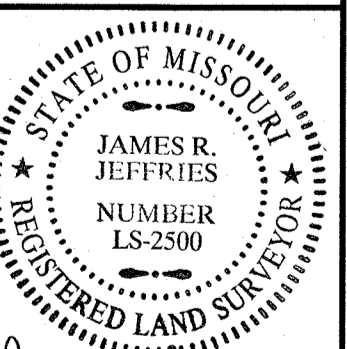
SEE SHEET 2 OF 8
MATCHLINE

TREE SURVEY FOR
THE TREE PRESERVATION EASEMENT ON LOT 2A
LENOIR SUBDIVISION PLAT 2

LOCATED IN SECTION 29, TOWNSHIP 48 NORTH, RANGE 12 WEST
COLUMBIA, BOONE COUNTY, MISSOURI

DATE 12/18/2017	JOB NUMBER 16049.04	JAMES R. JEFFRIES PROFESSIONAL LAND SURVEYOR PLS-2500
--------------------	------------------------	---

DATE: Dec. 18, 2017



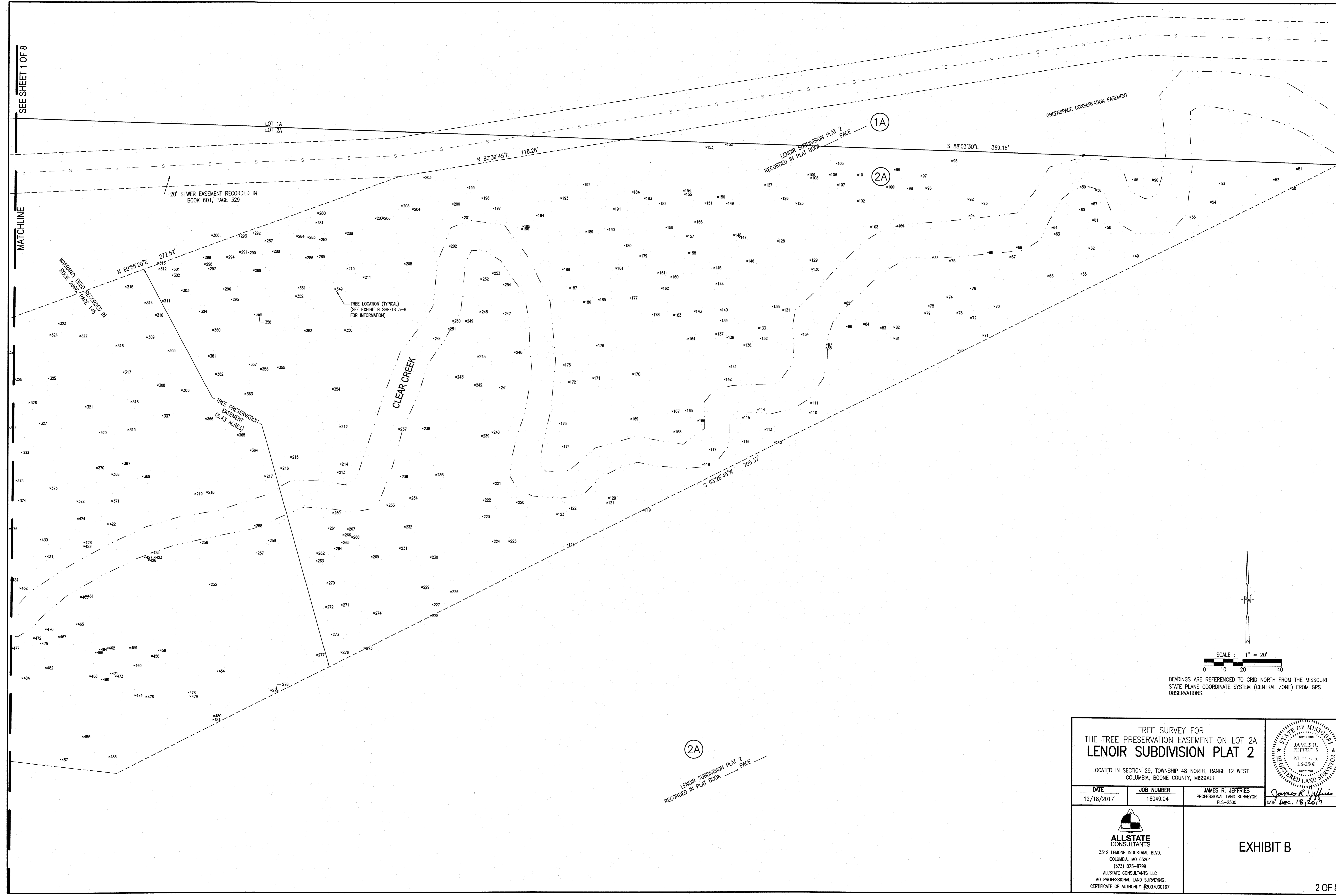
ALLSTATE CONSULTANTS
3312 LEMONE INDUSTRIAL BLVD.
COLUMBIA, MO 65201
(573) 875-8799
ALLSTATE CONSULTANTS LLC
MO PROFESSIONAL LAND SURVEYING
CERTIFICATE OF AUTHORITY #2007000167

EXHIBIT B

THIS TREE SURVEY WAS COMPLETED DECEMBER 13-18, 2017, AS AN EXHIBIT FOR A TREE PRESERVATION EASEMENT DOCUMENT. TO THE BEST OF MY BELIEF AND KNOWLEDGE THE TREES DESCRIBED ON SHEETS 3 THROUGH 8 ARE LOCATED IN THE POSITIONS SHOWN HEREON.

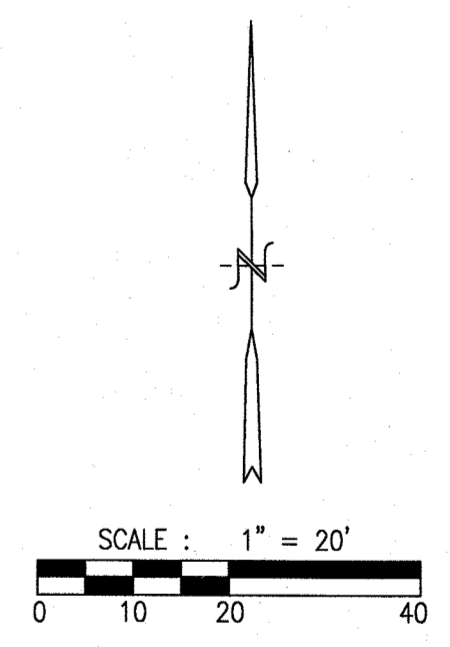
SEE SHEET 1 OF 8

MATCHLINE



LENOIR SUBDIVISION PLAT 2
RECORDED IN PLAT BOOK _____ PAGE (1A)

(2A)
LENOIR SUBDIVISION PLAT 2
RECORDED IN PLAT BOOK _____ PAGE _____



BEARINGS ARE REFERENCED TO GRID NORTH FROM THE MISSOURI STATE PLANE COORDINATE SYSTEM (CENTRAL ZONE) FROM GPS OBSERVATIONS.

TREE SURVEY FOR THE TREE PRESERVATION EASEMENT ON LOT 2A LENOIR SUBDIVISION PLAT 2			
LOCATED IN SECTION 29, TOWNSHIP 48 NORTH, RANGE 12 WEST COLUMBIA, BOONE COUNTY, MISSOURI			
DATE 12/16/2017	JOB NUMBER 16049.04	JAMES R. JEFFRIES PROFESSIONAL LAND SURVEYOR PLS-2500 <i>James R. Jeffries</i> DATE: Dec. 18, 2017	
<p>ALLSTATE CONSULTANTS 3312 LEMONE INDUSTRIAL BLVD. COLUMBIA, MO 65201 (573) 875-8799 ALLSTATE CONSULTANTS LLC MO PROFESSIONAL LAND SURVEYING CERTIFICATE OF AUTHORITY #2007000167</p>		<p>EXHIBIT B</p>	

13:201616049.04 - Lenoir Platting.dwg/LENOIR TREE SURVEY.dwg SHEET 2, 12/20/2017 11:30:22 AM

EXHIBIT B

#	DESCRIPTION	#	DESCRIPTION	#	DESCRIPTION
1	9" ASH	44	10" HACKBERRY	87	12" HACKBERRY
2	4" PERSIMMON	45	5" HACKBERRY	88	6" WHITE OAK
3	14" OAK	46	24" OAK	89	6" HICKORY
4	12" OAK	47	12" HACKBERRY	90	8" HICKORY
5	20" OAK	48	12" WALNUTX2	91	4" HACKBERRY
6	16" OAK	49	10" ELM	92	10" HACKBERRY
7	23" OAK	50	8" HACKBERRY	93	12" HACKBERRY
8	4" CEDER	51	10" HICKORY	94	6" BLACK CHERRY
9	8" OAK	52	5" HICKORY	95	6" ELM
10	12" OAK	53	36" BLACK OAK	96	7" X2 HACKBERRY
11	10" ELM	54	4" BLACK CHERRY	97	8" HACKBERRY
12	5" OAK	55	15" HICKORY	98	10" HACKBERRY X2
13	5" ELM	56	6" HICKORY	99	4" HICKORY
14	12" HACKBERRY	57	10" ASH	100	4" HACKBERRY
15	7" OAK	58	5" BLACK CHERRY DEAD	101	12" HICKORY
16	10" OAK	59	6" HICKORY	102	30" ASH
17	14" HACKBERRY	60	15" DEAD ASH	103	6" BLACK CHERRY
18	14" OAK	61	18" HACKBERRY X2 DEAD	104	8" BLACK CHERRY
19	7" HACKBERRY	62	8" HACKBERRY	105	15" ASH
20	4" HACKBERRY	63	6" BASSWOOD	106	6" HICKORY
21	6" CHERRY	64	12" HACKBERRY	107	6" HACKBERRY
22	9" OAK	65	8" PERSIMMON	108	15" ASH
23	5" HACKBERRY	66	22" ASH	109	4" HACKBERRY
24	8" OAK	67	10" ASH	110	36" BLACK OAK
25	11" OAK	68	6" BASSWOOD	111	8" BLACK CHERRY
26	15" OAK	69	4" HICKORY	112	6" HICKORY
27	8" HACKBERRY	70	18" BLACK OAK	113	12" HICKORY
28	7" OAK	71	14" BLACK OAK	114	8" HICKORY
29	8" HACKBERRY	72	6" BLACK CHERRY	115	12" HACKBERRY
30	6" HACKBERRY	73	4" BLACK CHERRY	116	4" HICKORY
31	4" HACKBERRY	74	30" BLACK OAK	117	6" HICKORY
32	4" OAK	75	24" BLACK OAK	118	12" HICKORY
33	9" WALNUT	76	4" HICKORY	119	4" HICKORY
34	14" WALNUT	77	6" BLACK CHERRY	120	12" HACKBERRY
35	9" HACKBERRY	78	24" BLACK OAK	121	6" ELM
36	22" OAK	79	30" BLACK OAK	122	12" ELM DEAD
37	28" LOCUST	80	8" ASH	123	15" ASH
38	12" CHERRY	81	4" BLACK CHERRY	124	24" BLACK OAK
39	12" HACKBERRY	82	4" BLACK CHERRY	125	6" HACKBERRY
40	6" CHERRY	83	5" HICKORY	126	15" HICKORY
41	8" OAK	84	4" BLACK CHERRY	127	18" ASH
42	5" OAK	85	8" HICKORY	128	15" ASH DEAD
43	12" WALNUT	86	8" BLACK CHERRY	129	15" HACKBERRY

EXHIBIT B

#	DESCRIPTION	#	DESCRIPTION	#	DESCRIPTION
130	12" HACKBERRY	173	30" HACKBERRY	216	6" BLACK CHERRY
131	4" HACKBERRY	174	4" HICKORY	217	12" HACKBERRY
132	4" HACKBERRY	175	24" HACKBERRY	218	4" ELM
133	6" ELM	176	4" HACKBERRY	219	5" ASH
134	4" ELM	177	12" PERSIMMON X2	220	4" BLACK CHERRY
135	18" ASH	178	10" PERSIMMON	221	6" BLACK CHERRY
136	6" HACKBERRY	179	6" HACKBERRY	222	12" ASH
137	8" HACKBERRY	180	12" ASH	223	18" HICKORY
138	12" ASH	181	18" PERSIMMON	224	24" ASH
139	12" ASH	182	12" ASH DEAD	225	6" BLACK CHERRY
140	15" ASH	183	8" BLACK OAK	226	15" ASH
141	6" HICKORY	184	10" ASH	227	4" HICKORY
142	12" HICKORY	185	10" PERSIMMON	228	8" ASH
143	12" PERSIMMON	186	12" PERSIMMON	229	18" HACKBERRY
144	8" HACKBERRY	187	12" PERSIMMON	230	10" ASH
145	12" ASH DEAD	188	12" HICKORY	231	6" ASH
146	12" HACKBERRY	189	42" BLACK OAK	232	8" HACKBERRY
147	15" HICKORY	190	5" HICKORY	233	24" ASH
148	12" ASH DEAD	191	4" HACKBERRY	234	10" ASH
149	12" HACKBERRY	192	9" HICKORY	235	12" ASH
150	10" HICKORY	193	10" HACKBERRY	236	6" ELM
151	15" ASH DEAD	194	5" ASH	237	8" HICKORY
152	6" ELM	195	6" ASH	238	16" HACKBERRY
153	8" ASH	196	4" ASH	239	6" ELM
154	15" ASH	197	4" ASH	240	36" BLACK OAK DEAD
155	4" HACKBERRY	198	6" ASH	241	6" HICKORY
156	6" PERSIMMON	199	10" ASH	242	15" ASH
157	12" PERSIMMON	200	14" BLACK OAK	243	12" ASH
158	12" PERSIMMON	201	4" ASH	244	12" WALNUT
159	10" ASH	202	15" ASH	245	18" HACKBERRY
160	6" HACKBERRY	203	6" HICKORY	246	15" BLACK OAK
161	15" PERSIMMON	204	6" ASH	247	6" BLACK CHERRY
162	4" HACKBERRY	205	6" ASH	248	15" HICKORY
163	8" HACKBERRY	206	8" WAL	249	8" BLACK CHERRY
164	15" ASH	207	14" BLACK OAK	250	5" HICKORY
165	4" HICKORY	208	18" HACKBERRY	251	4" ELM
166	6" HICKORY	209	12" HICKORY	252	4" BLACK CHERRY
167	4" HACKBERRY	210	6" BLACK CHERRY	253	14" HICKORY
168	4" HACKBERRY	211	30" BLACK OAK	254	6" ELM
169	18" MULBERRY	212	10" HACKBERRY	255	5" WHITE OAK
170	10" BLACK CHERRY	213	12" HACKBERRY	256	5" BLACK CHERRY
171	12" HACKBERRY	214	4" ELM	257	12" HACKBERRY
172	6" BLACK CHERRY	215	4" BLACK CHERRY	258	5" HACKBERRY

EXHIBIT B

#	DESCRIPTION	#	DESCRIPTION	#	DESCRIPTION
259	18" ASH	302	8" ASH	345	7" PERSIMMON
260	18" ASH	303	7" ASH	346	5" HICKORY
261	10" HICKORY	304	11" ASH	347	7" ELM
262	12" HACKBERRY	305	10" ASH	348	10" ASH DEAD
263	6" HACKBERRY	306	7" ASH	349	28" WALUT DEAD
264	6" HICKORY	307	7" ASH DEAD	350	14" HACKBERRY
265	18" ASH	308	9" ASH	351	10" WALNUT DEAD
266	15" ASH	309	21" BLACK OAK	352	8" HACKBERRY
267	12" ASH DEAD	310	5" ASH	353	7" HACKBERRY
268	8" HICKORY	311	5" BASSWOOD	354	9" HACKBERRY
269	4" BLACK CHERRY	312	5" ASH	355	15" HICKORY
270	10" HICKORY	313	4" PERSIMMON	356	4" CHERRY
271	12" ASH	314	7" ASH	357	12" HICKORY
272	6" HACKBERRY	315	7" ASH	358	12" HACKBERRY
273	6" HARD MAPLE	316	5" ASH BOX ELDER	359	15" HACKBERRY
274	12" ASH	317	14" BLACK OAK	360	7" BLACK CHERRY
275	15" ASH	318	7" BLACK OAK	361	12" ASH
276	15" HICKORY	319	4" BOX ELDER	362	5" HICKORY
277	4" ELM	320	8" HICKORY	363	4" BLACK OAK DEAD
278	6" ASH	321	16" BLACK OAK	364	7" BLACK CHERRY
279	15" HICKORY	322	7" ASH	365	20" HICKORY
280	10" ASH	323	4" ELM	366	10" HICKORY
281	8" ASH	324	7" ASH	367	25" BLACK OAK
282	7" ASH	325	9" ASH DEAD	368	4" ASH
283	10" ASH	326	8" ASH DEAD	369	7" BLACK CHERRY
284	12" ASH	327	7" ASH	370	30" BLACK OAK
285	6" ASH	328	9" ASH	371	5" HICKORY
286	13" ASH	329	4" ELM	372	16" BLACK CHERRY
287	6" ASH	330	6" ASH	373	20" BLACK OAK
288	7" ASH	331	4" ELM	374	30" BLACK OAK
289	8" ASH	332	4" ASH	375	5" HICKORY
290	7" ASH	333	5" HICKORY	376	12" HACKBERRY
291	8" ASH	334	7" ASH	377	9" ASH
292	7" HICKORY	335	5" ASH DEAD	378	4" HICKORY
293	6" ASH	336	5" ELM	379	15" BLACK OAK
294	9" ASH	337	10" ASH	380	4" BLACK CHERRY
295	9" ASH	338	5" ELM	381	5" ASH
296	6" ASH DEAD	339	10" ASH	382	4" ASH
297	13" BLACK OAK	340	13" BLACK OAK	383	4" ASH
298	6" ASH DEAD	341	7" ASH	384	5" HACKBERRYBERRY
299	10" ASH DEAD	342	13" BLACK OAK	385	4" HICKORY
300	13" ASH	343	9" ASH	386	5" HICKORY
301	6" PERSIMMON	344	6" ASH	387	6" HACKBERRY

LOT 2A, LENOIR SUBDIVISION PLAT 2 TREE SURVEY

EXHIBIT B

#	DESCRIPTION	#	DESCRIPTION	#	DESCRIPTION
388	5" HICKORY	431	12" BLACK CHERRY	474	6" CHERRY
389	20" BLACK OAK	432	8" ELM	475	30" HICKORY
390	4" ASH	433	8" ELM	476	24" HICKORY
391	12" ASH	434	10" HICKORY	477	10" BLACK OAK
392	7" HACKBERRY	435	16" ASH	478	12" ASH
393	18" ASH	436	6" ELM	479	11" ELM
394	5" HACKBERRY	437	9" HACKBERRY	480	10" HACKBERRY
395	5" HICKORY	438	5" HACKBERRY	481	11" ELM
396	12" ASH	439	5" HACKBERRY	482	5" HACKBERRY
397	4" HICKORY	440	22" BLACK OAK	483	10" HICKORY
398	4" HICKORY	441	10" HACKBERRY	484	5" BLACK CHERRY
399	16" ASH	442	6" LOCUST	485	20" ASH
400	6" HICKORY	443	5" HACKBERRY	486	7" ELM
401	8" ELM	444	13" HICKORY	487	18" HACKBERRY
402	5" CHERRY	445	5" ELM	488	8" HACKBERRY
403	6" ELM	446	16" BLACK OAK	489	6" HICKORY
404	4" CHERRY	447	10" HACKBERRY	490	10" HACKBERRY
405	5" HACKBERRY	448	22" HACKBERRY	491	10" ASH DEAD
406	12" HACKBERRY	449	12" ASH	492	18" ASH DEAD
407	4" WALNUT	450	6" PERSIMMON	493	10" ELM
408	18" HICKORY	451	30" BLACK OAK	494	5" HICKORY
409	7" ASH	452	6" ELM	495	12" WALNUT
410	5" HACKBERRY	453	10" HICKORY	496	7" ELM
411	12" ASH	454	12" ASH	497	4" HICKORY
412	4" ASH	455	18" BLACK OAK	498	11" HICKORY
413	4" HACKBERRY	456	24" HACKBERRY	499	24" HACKBERRY
414	28" BLACK OAK	457	40" BLACK OAK	500	15" HICKORY
415	5" ASH	458	8" HACKBERRY	501	6" BLACK CHERRY
416	18" BLACK OAK	459	10" ASH	502	5" ELM
417	6" CHERRY	460	5" MAPLE	503	16" HICKORY
418	5" ASH	461	13" HACKBERRY	504	6" HACKBERRY
419	4" HICKORY	462	5" LOCUST	505	5" BLACK CHERRY
420	6" HACKBERRY	463	5" LOCUST	506	5" HACKBERRY
421	4" ELM	464	9" HACKBERRY	507	5" BLACK CHERRY
422	10" HACKBERRY	465	5" MAPLE	508	6" HACKBERRY
423	14" LOCUST	466	6" ELM	509	20" HACKBERRY
424	5" HICKORY	467	7" HACKBERRY	510	5" ELM
425	5" HACKBERRY	468	8" HACKBERRY	511	4" BLACK CHERRY
426	4" LOCUST	469	8" HACKBERRY	512	12" ELM
427	12" LOCUST	470	5" ELM	513	4" HICKORY
428	16" ASH	471	6" HACKBERRY	514	27" OAK DEAD
429	20" ASH	472	5" HACKBERRY	515	5" HICKORY
430	30" BLACK OAK	473	6" HACKBERRY	516	4" HICKORY

EXHIBIT B

#	DESCRIPTION	#	DESCRIPTION	#	DESCRIPTION
517	4" HACKBERRY	560	20" BLACK OAK	603	11" HACKBERRY
518	4" PERSIMMON	561	6" MULBERRY	604	10" ASH DEAD
519	12" HACKBERRY	562	18" HACKBERRY	605	6" ELM
520	20" ASH DEAD	563	20" HACKBERRY	606	7" BLACK CHERRY
521	7" ASH	564	7" HACKBERRY	607	14" ASH
522	28" WALNUT	565	7" HACKBERRY	608	18" HACKBERRY
523	4" CHERRY	566	5" HACKBERRY	609	12" ASH
524	6" HICKORY	567	4" HACKBERRY	610	8" HACKBERRY
525	10" BLACK OAK	568	18" LOCUST DEAD	611	4" ELM
526	14" HACKBERRY	569	7" MULBERRY	612	14" ASH
527	14" HACKBERRY	570	10" HACKBERRY	613	6" HACKBERRY
528	10" HACKBERRY	571	6" HACKBERRY	614	6" HACKBERRY
529	10" HACKBERRY	572	9" HACKBERRY	615	12" ASH DEAD
530	20" LOCUST DEAD	573	18" HACKBERRY	616	14" HACKBERRY
531	10" ELM	574	9" HACKBERRY	617	24" WALNUT
532	31" BLACK OAK	575	20" LOCUST	618	15" ASH
533	10" ELM	576	5" HACKBERRY	619	14" ASH
534	5" HACKBERRY	577	18" HACKBERRY	620	12" HACKBERRY
535	5" HICKORY	578	12" HACKBERRY	621	12" ASH
536	14" HACKBERRY	579	12" HACKBERRY	622	22" OAK
537	6" HICKORY	580	8" HACKBERRY	623	5" HICKORY
538	18" LOCUST	581	12" HACKBERRY	624	6" HICKORY
539	14" HACKBERRY	582	4" HACKBERRY	625	14" OAK
540	24" LOCUST DEAD	583	24" BLACK OAK	626	4" HACKBERRY
541	6" HACKBERRY	584	4" HACKBERRY	627	12" ASH
542	15" LOCUST DEAD	585	5" HICKORY	628	10" ASH
543	6" HICKORY	586	4" ELM	629	4" HICKORY
544	8" HACKBERRY	587	6" HICKORY	630	6" ASH
545	8" HACKBERRY	588	12" OAK	631	30" HICKORY
546	16" LOCUST	589	4" HICKORY	632	4" HACKBERRY
547	16" HACKBERRY	590	6" HICKORY	633	7" HACKBERRY
548	11" HACKBERRY	591	4" HACKBERRY	634	10" ASH
549	8" HACKBERRY	592	6" HACKBERRY	635	8" ASH
550	18" ASH	593	5" ELM	636	12" ASH
551	10" HACKBERRY	594	7" HACKBERRY	637	4" ELM
552	7" ASH	595	9" HICKORY	638	6" ELM
553	10" HACKBERRY	596	9" ASH	639	8" HICKORY
554	16" HACKBERRY	597	12" ASH DEAD	640	5" HACKBERRY
555	10" HICKORY	598	12" ASH DEAD	641	10" HICKORY
556	12" HACKBERRY	599	5" HACKBERRY	642	4" ELM
557	9" HICKORY	600	12" ASH	643	6" HICKORY
558	14" BLACK OAK	601	8" HACKBERRY	644	12" BLACK OAK
559	10" HACKBERRY	602	9" HACKBERRY	645	11" BLACK OAK

EXHIBIT B

#	DESCRIPTION	#	DESCRIPTION	#	DESCRIPTION
646	15" ASH	689	30" BLACK OAK	732	11" HACKBERRY
647	10" OAK	690	14" HACKBERRY	733	6" LOCUST
648	14" ASH DEAD	691	8" HACKBERRY	734	6" HACKBERRY
649	16" ASH DEAD	692	5" HICKORY	735	14" HACKBERRY
650	9" HICKORY	693	10" ASH DEAD	736	4" ELM
651	7" ELM	694	22" ASH	737	10" ASH
652	10" HICKORY	695	6" HICKORY	738	18" HACKBERRY
653	6" ELM	696	5" ASH	739	8" PERSIMMON
654	12" ASH DEAD	697	4" HICKORY	740	4" ELM
655	6" ELM	698	10" HACKBERRY	741	10" HACKBERRY
656	7" HICKORY	699	10" BLACK OAK	742	10" HACKBERRY
657	20" ASH DEAD	700	10" BLACK OAK	743	15" ASH
658	8" HICKORY	701	12" ASH DEAD	744	4" ASH
659	6" HICKORY	702	6" ASH DEAD	745	12" HACKBERRY
660	12" HACKBERRY	703	6" HICKORY	746	20" ASH
661	8" ASH	704	28" BLACK OAK	747	16" ASH DEAD
662	20" ASH	705	4" HICKORY	748	12" ELM
663	24" OAK	706	16" ASH	749	6" BLACK CHERRY
664	12" ASH	707	4" HACKBERRY	750	5" HICKORY
665	14" HICKORY	708	25" BLACK OAK	751	15" ASH DEAD
666	5" BLACK CHERRY	709	8" BLACK OAK	752	22" ASH
667	10" HACKBERRY	710	5" BLACK CHERRY	753	18" ASH
668	14" HACKBERRY	711	8" ASH DEAD	754	22" WALNUT
669	14" HACKBERRY	712	5" BLACK CHERRY DEAD	755	10" HACKBERRY
670	4" ASH	713	15" LOCUST	756	18" ASH DEAD
671	18" HACKBERRY	714	8" LOCUST	757	15" HACKBERRY
672	9" HACKBERRY	715	12" HACKBERRY	758	8" ASH
673	4" ASH	716	12" HACKBERRY	759	12" PERSIMMON
674	12" HACKBERRY	717	10" HACKBERRY	760	6" HICKORY
675	4" ELM	718	24" BLACK OAK	761	15" ASH
676	12" HACKBERRY	719	6" BLACK OAK DEAD	762	6" HICKORY
677	5" HICKORY	720	24" LOCUST	763	15" ASH
678	10" HICKORY	721	10" HACKBERRY	764	14" ASH
679	10" HACKBERRYX2	722	20" HACKBERRY	765	14" HICKORY
680	15" ASH	723	18" HACKBERRY	766	8" BLACK OAK
681	12" HACKBERRY	724	18" HACKBERRY	767	12" HACKBERRY
682	6" HACKBERRY	725	12" HACKBERRY	768	4" HACKBERRY
683	8" ASHX2	726	8" HACKBERRY	769	6" HACKBERRY
684	6" HACKBERRY	727	18" HACKBERRY	770	6" HACKBERRY
685	6" HACKBERRY	728	16" HACKBERRY	771	4" CHERRY
686	22" ASH	729	9" HACKBERRY	772	4" HACKBERRY
687	7" OAK	730	12" HACKBERRY	773	4" HACKBERRY
688	6" HACKBERRY DEAD	731	6" HACKBERRY	774	6" BLACK OAK