

Case # 260-2024 - 4414 Smith Drive Rezoning



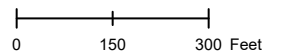
City Zoning Parcels

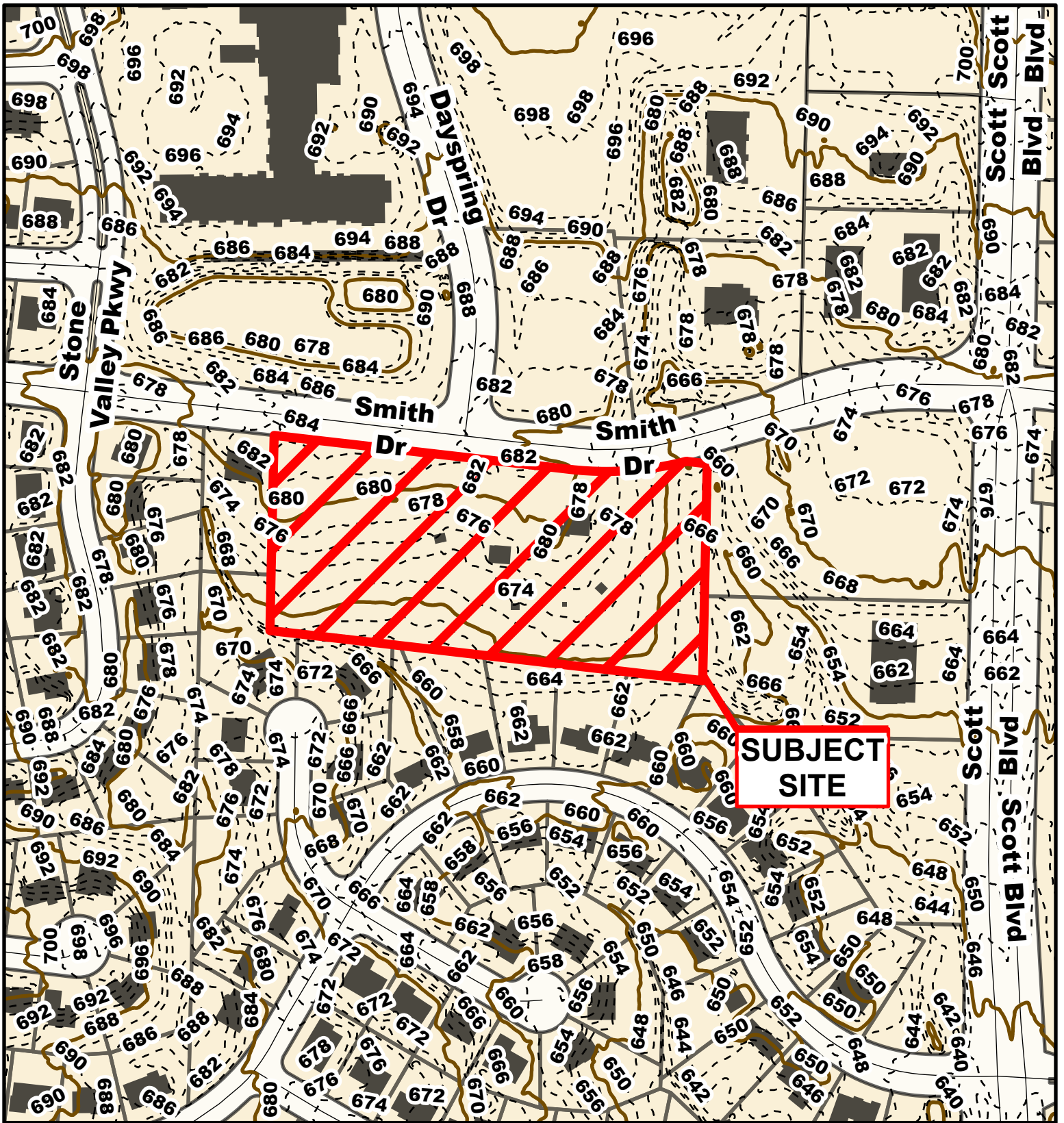


Parcel Data Source: Boone County Assessor

Created by The City of Columbia - Community Development Department

2022 Imagery: NearMap



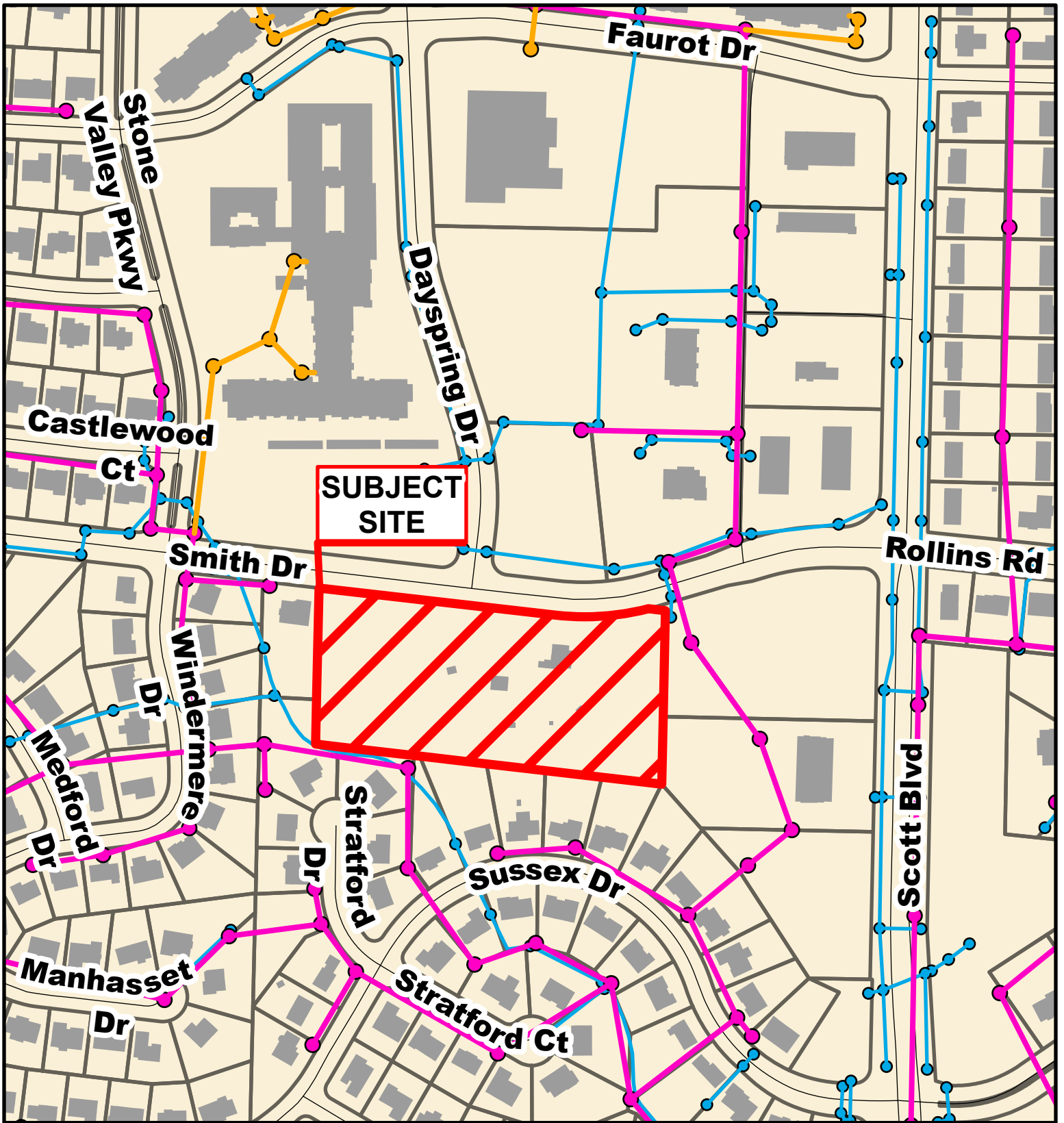


Case # 260-2024 - 4414 Smith Drive Rezoning



- 10 Foot Contour Lines
- 2 Foot Contour Lines
- Parcels





Case # 260-2024 - 4414 Smith Drive
Rezoning



- City Sanitary Line
- City Storm Lines
- Private Sanitary Line
- Parcels

