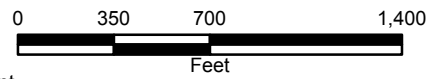
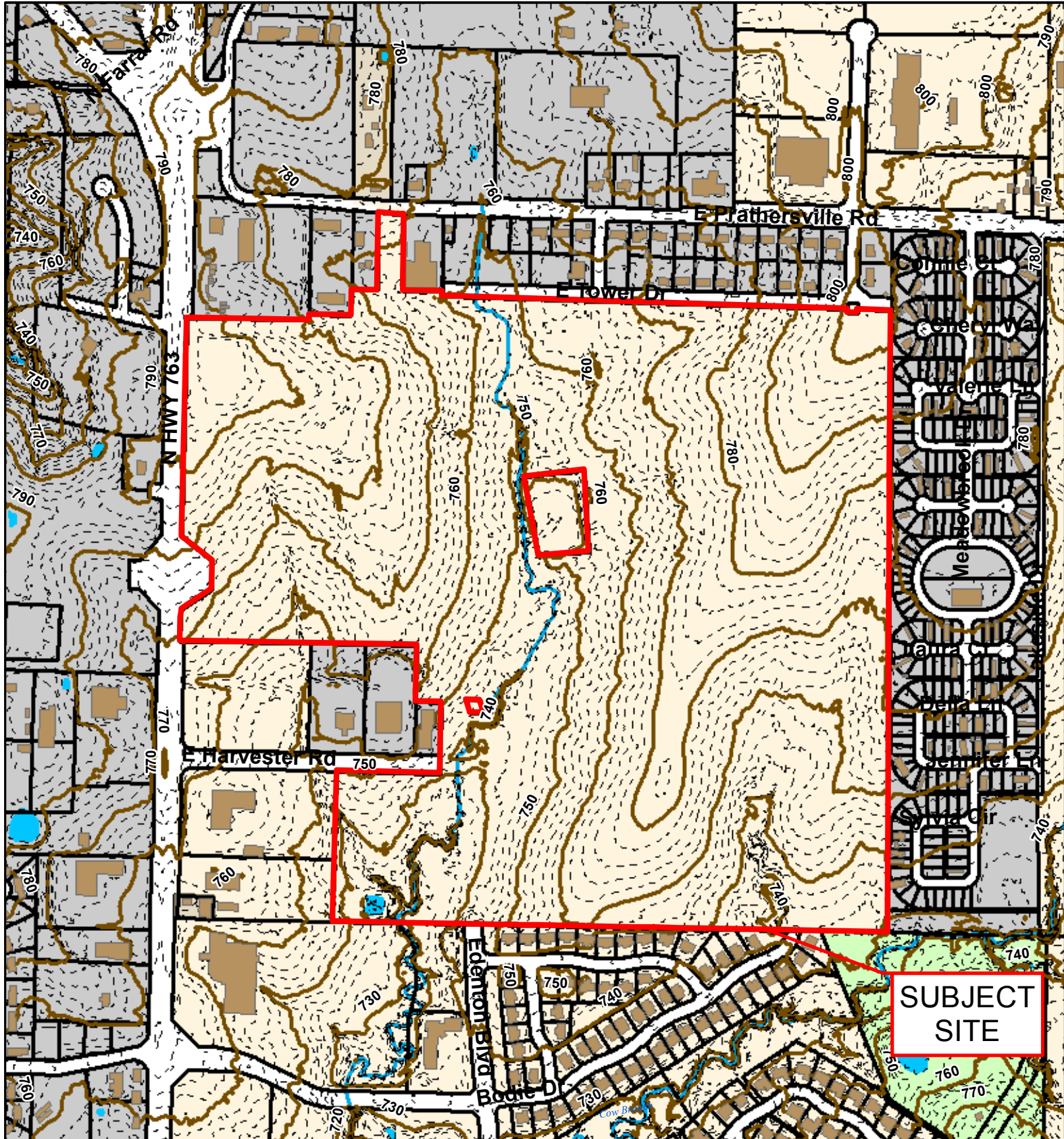


17-14: 763 Industrial Park Preliminary Plat



- City Zoning
- Parcels
- Boone County Zoning
- Columbia City Limit



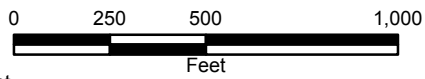


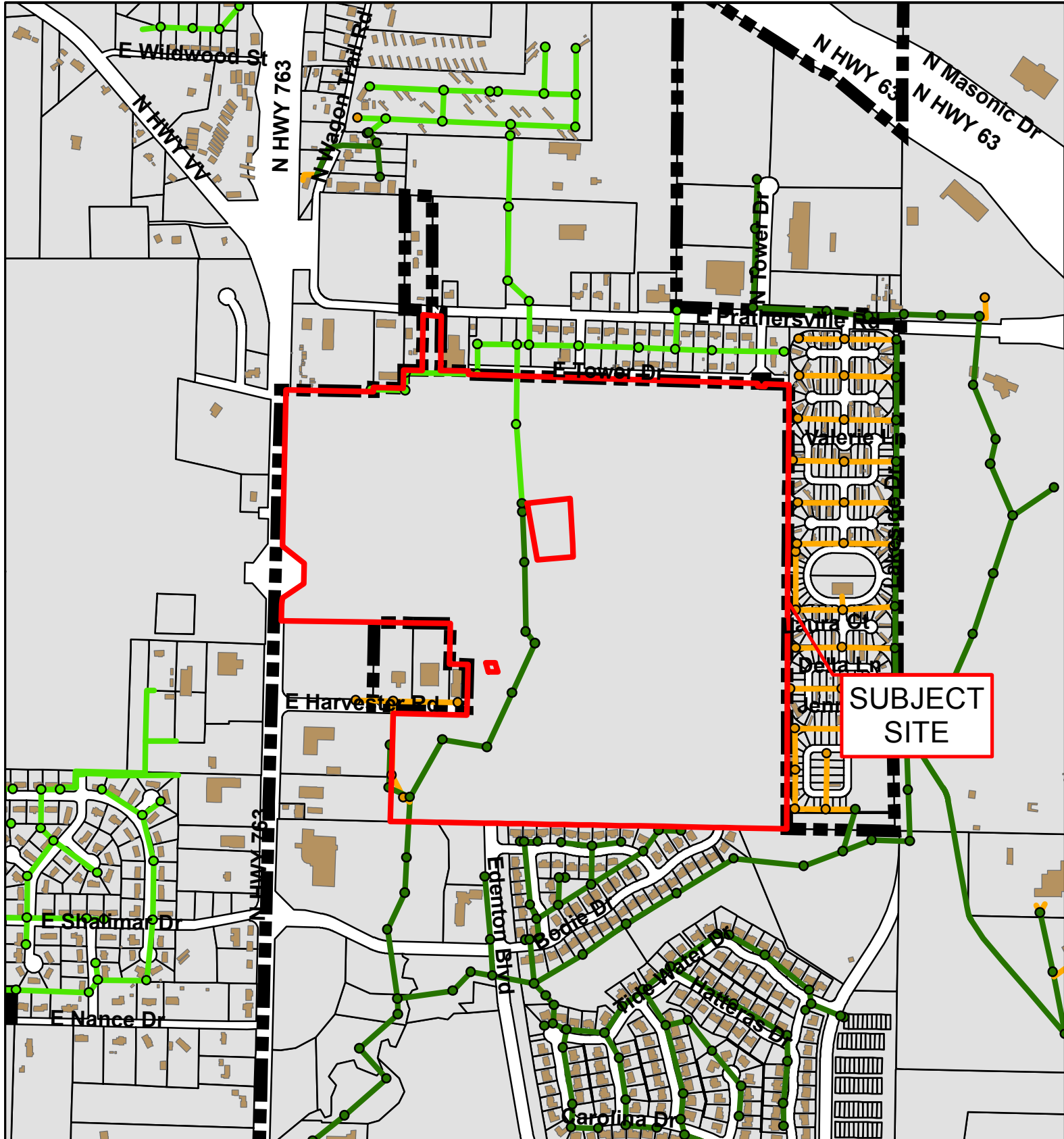
SUBJECT SITE

17-14: 763 Industrial Park Preliminary Plat



- 10 Foot Contour Lines
- 2 Foot Contour Lines
- Parcels
- Building Footprint





17-14: 763 Industrial Park Preliminary Plat

