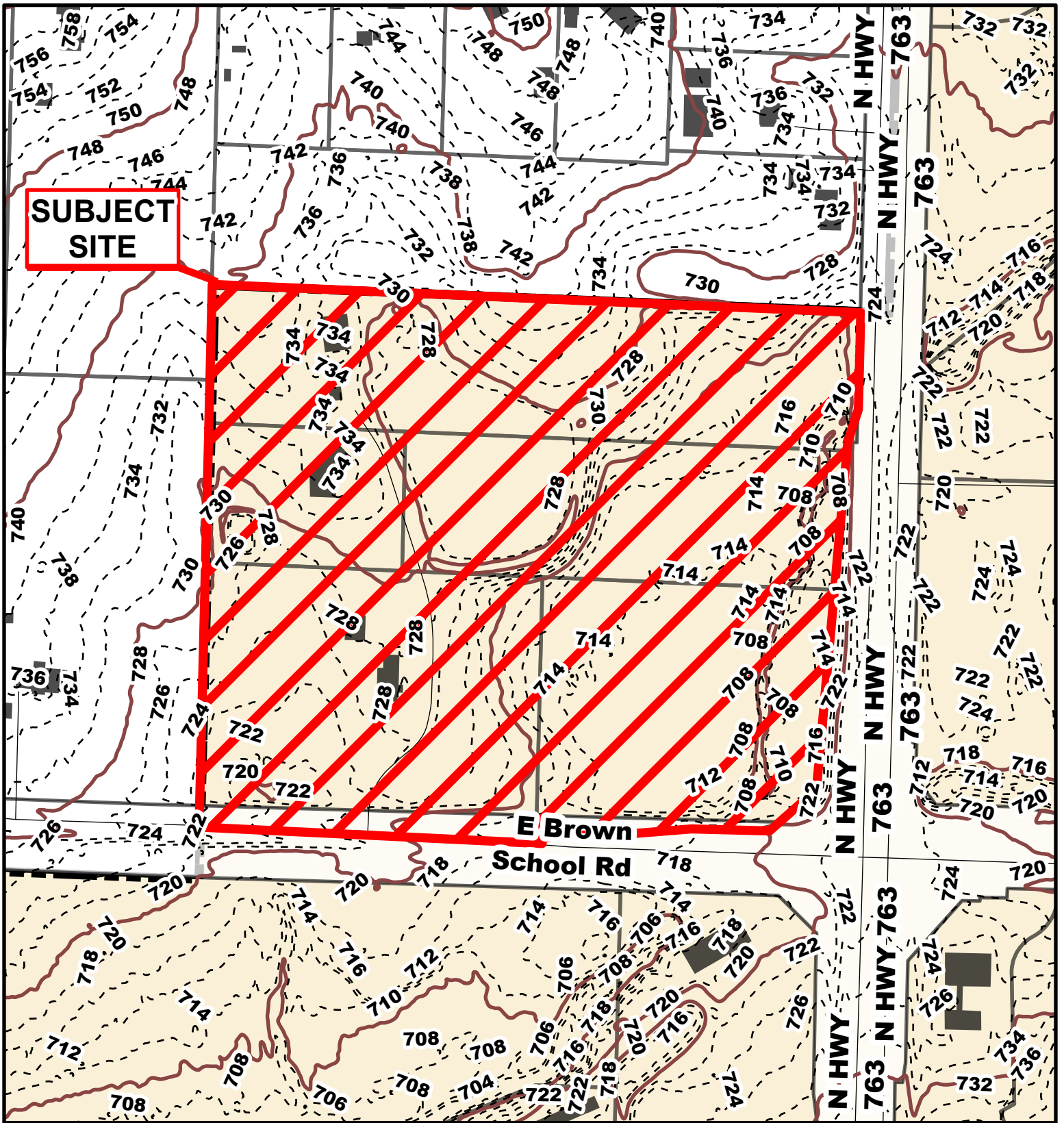


## Case # 30-2025 - 1003 E. Brown School Road Final Plat







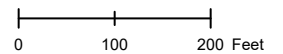
# Case # 30-2025 - 1003 E. Brown School Road

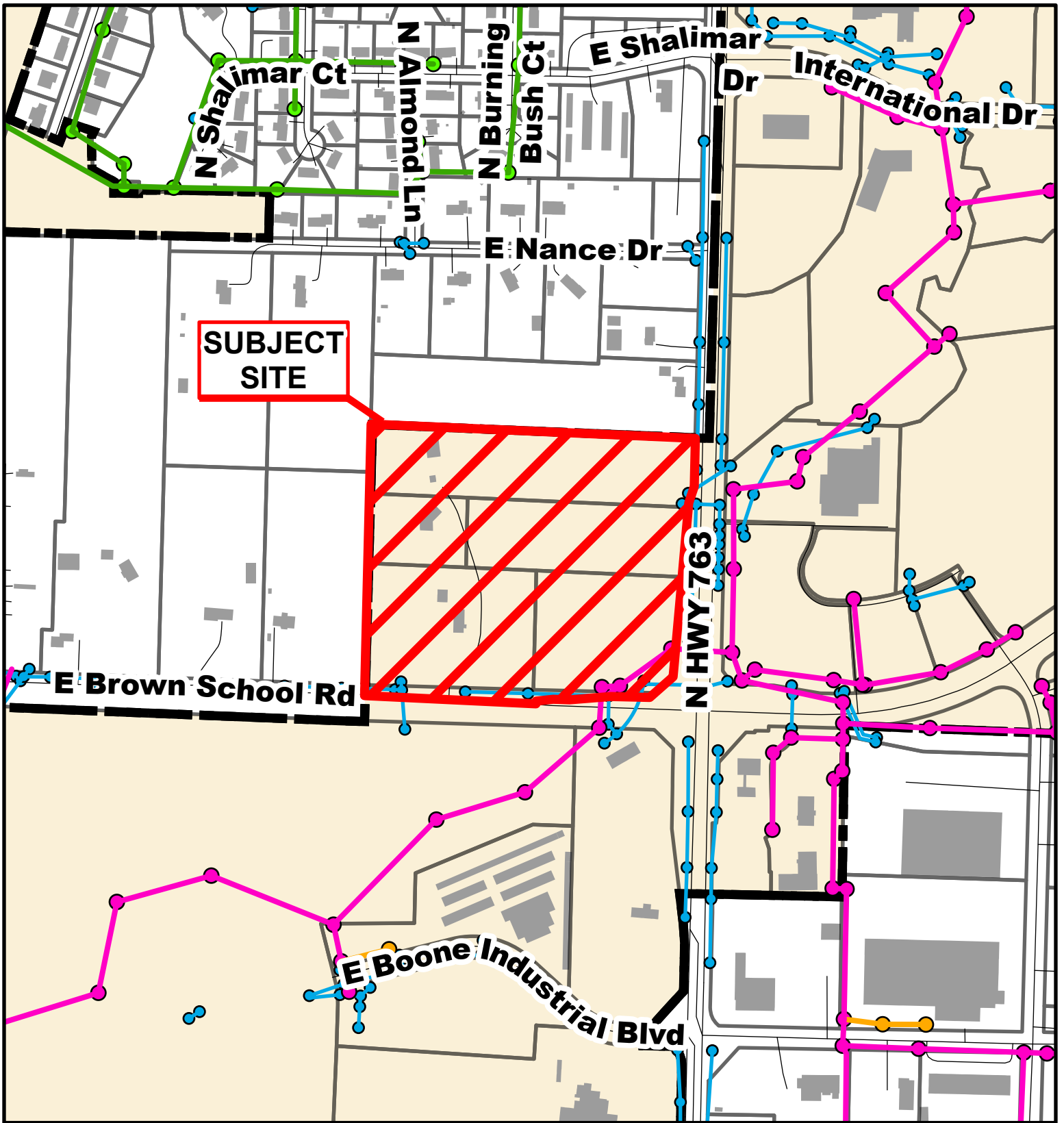
## Final Plat



Parcel Data Source: Boone County Assessor  
 Created by The City of Columbia - Community Development Department

- 10 Foot Contour Lines
- Parcels
- 2 Foot Contour Lines





# Case # 30-2025 - 1003 E. Brown School Road

## Final Plat



- City Sanitary Line
- City Storm Lines
- BCRSD Sanitary Line
- Parcels
- Private Sanitary Line

