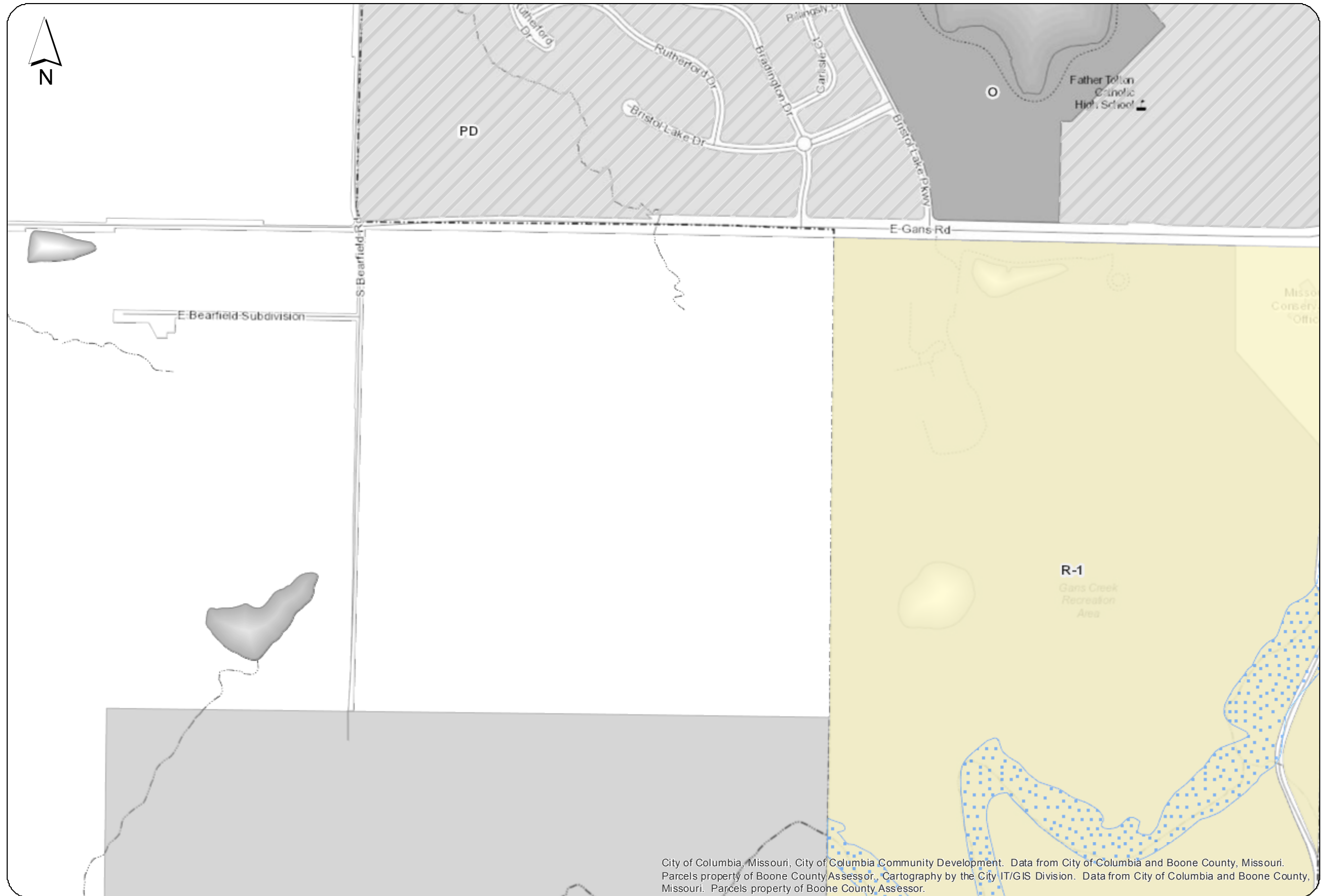


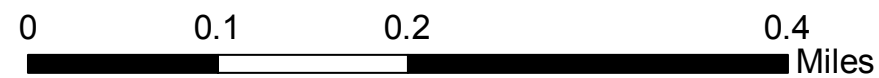
# City of Columbia Missouri City View



City of Columbia, Missouri, City of Columbia Community Development. Data from City of Columbia and Boone County, Missouri. Parcels property of Boone County Assessor. Cartography by the City IT/GIS Division. Data from City of Columbia and Boone County, Missouri. Parcels property of Boone County Assessor.



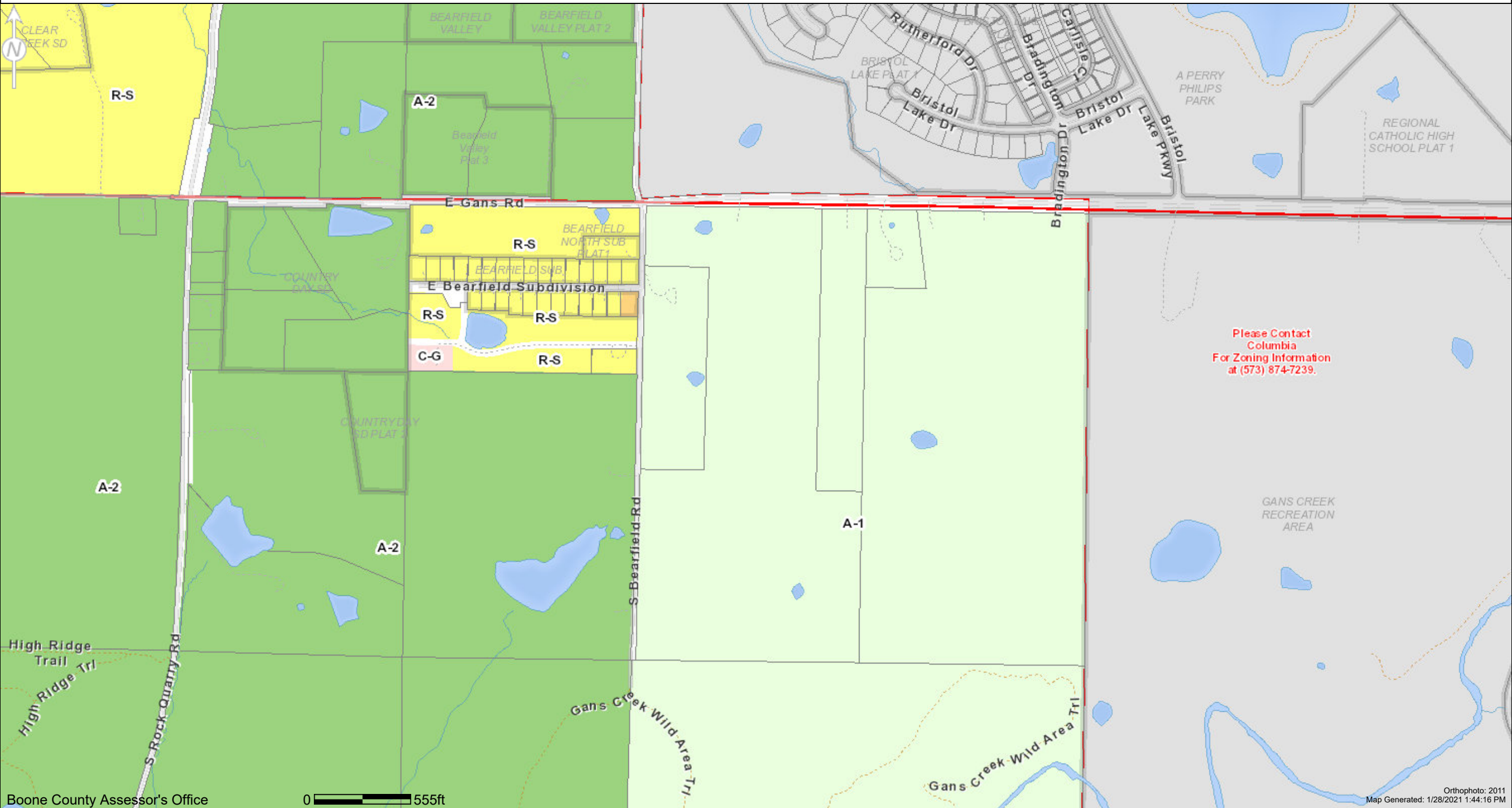
1 : 6,400



DATA FROM CITY OF COLUMBIA AND BOONE COUNTY, MISSOURI. PARCELS PROPERTY OF BOONE COUNTY ASSESSOR. THE CITY OF COLUMBIA DOES NOT WARRANT OR GUARANTEE THE ACCURACY, CONTENT, QUALITY, RELIABILITY, FITNESS, COMPLETENESS OR TIMELINESS OF ANY SPATIAL DATA OR ITS ATTRIBUTES. DATA ARE "AS IS" AND WITHOUT WARRANTY EXPRESS OR IMPLIED. USER ASSUMES ALL RISK IN THE USE OF AND RELIANCE UPON ANY INFORMATION CONTAINED THEREIN.

# Boone County Internet Parcel Map

Prepared by the Boone County Assessor's Office, (573) 886-4262



Please Contact  
Columbia  
For Zoning Information  
at (573) 874-7239.

Boone County Assessor's Office

0 555ft

Orthophoto: 2011  
Map Generated: 1/28/2021 1:44:16 PM

### ATTENTION!!

DISCLAIMER: READ CAREFULLY: These maps were prepared for the inventory of real property based on the utilization of deeds, plans, and/or supportive data. In addition, map files are frequently changed to reflect changes in boundaries, lot lines and other geographic features resulting from changes in ownership, development and other causes. The existence, dimension, and location of features, as well as other information, should not be relied upon for any purpose without actual field verification. The County of Boone makes no warranty of any kind concerning the completeness or accuracy of information contained on these maps and assumes no liability or responsibility for the use or reuse of these maps by persons not affiliated with Boone County. Use of these maps by any person not affiliated with Boone County constitutes agreement by the user to assume full liability and responsibility for the verification of the accuracy of information shown on these maps.