

Introduced by Treece

First Reading 8-15-16

Second Reading 9-6-16

Ordinance No. 022920

Council Bill No. B 220-16

AN ORDINANCE

amending Chapter 6 of the City Code as it relates to miscellaneous corrections to the 2015 Edition of the International Residential Code for One- and Two-Family Dwellings and the 2015 Edition of the International Energy Conservation Code; and fixing the time when this ordinance shall become effective.

BE IT ORDAINED BY THE COUNCIL OF THE CITY OF COLUMBIA, MISSOURI, AS FOLLOWS:

SECTION 1. Chapter 6 of the Code of Ordinances of the City of Columbia, Missouri, is hereby amended as follows:

Material to be deleted in ~~strikeout~~; material to be added underlined.

Sec. 6-65. Adopted.

The 2015 Edition of the International Residential Code for One- and Two-Family Dwellings, published by the International Code Council, Inc., including Appendices A, B, C, E, F, G, H, K, N, R, S and U one copy of which has been on file with the city clerk for a period of ninety (90) days prior to the adoption of this article, is hereby adopted by reference and made a part of the Code of Ordinances, City of Columbia, Missouri as fully as if set forth in its entirety. At least one (1) copy of the 2015 Edition of the International Residential Code for One- and Two-Family Dwellings shall remain on file in the office of the city clerk and shall be kept available for public use, inspection and examination.

Sec. 6-66. Amendments.

The code adopted by this article is hereby amended by substituting the following sections in lieu of those sections with corresponding numbers in the code, or, where there is no corresponding section in the code, the following sections shall be enacted as additions to the code:

R101.1 Title. These provisions shall be known as the Residential Code for One- and Two-Family Dwellings of the City of Columbia, and shall be cited as such and will be referred to herein as "this code."

~~R102.5.1 Appendices A, B, C, E, F, G, H, K, N, R and S are hereby adopted as published.~~

R103.1 Creation of enforcement agency. Delete in its entirety.

...
N1101.3 Scope. Add the following: The figure labeled 2015 Residential Energy Code Requirements Diagram and dated October 1, 2016 is an approved alternative means of compliance.

NOTE: Drawing as stated above is on file in the office of the building official.

N1102.2.9 (R402.2.9) Basement walls. Amend first sentence as follows: Walls associated with finished basements shall be insulated from the top of the basement wall down to 10 feet (3048 mm) below grade or to the basement floor, whichever is less.

N1102.4.4 (R402.4.4) Rooms containing fuel burning appliances. Delete.

N1103.5.2 (R403.5.2) Demand recirculation systems. Delete.

...
Sec. 6-235. Adopted.

The 2015 Edition of the International Energy Conservation Code, published by the International Code Council, Inc., including Appendix Appendices RA and RB, one copy of which has been on file with the city clerk for a period of ninety (90) days prior to the adoption of this article, is hereby adopted by reference and made a part of the Code of Ordinances, City of Columbia, Missouri as fully as if set forth in its entirety. At least one (1) copy of the 2015 Edition of the International Energy Conservation Code shall remain on file in the office of the city clerk and shall be kept available for public use, inspection and examination.


...
SECTION 2. This ordinance shall be in full force and effect from and after its passage.

PASSED this 6th day of September, 2016.

ATTEST:



City Clerk



Mayor and Presiding Officer

APPROVED AS TO FORM:



City Counselor

City of Columbia, MO 2015 RESIDENTIAL ENERGY CODE REQUIREMENTS DIAGRAM

October 1, 2016

Eave baffle as required

R-49 or R-38 with energy band

Fenestration U-Factor.....0.35
 Skylight U-Factor.....0.55
 Glazed fenestration SHGC.....0.40
 Fenestration air leakage.....< 0.3 CFM/Sq Ft
 Air leakage not to exceed 3 ACH

Exterior sheathing

R-20 wall assembly

Ducts shall be sealed. Envelope (blower door test) and duct testing are required to demonstrate compliance.

Water resistive barrier

If 2x6 wall, entire cavity shall be filled

Programmable thermostat should be set to heat no higher than 70 degree F and cool no lower than 78 degrees F

2x4 wall only allowed by approved alternative method

75% of lamps shall be high efficacy

At unfinished basement, no foundation wall insulation

Joist

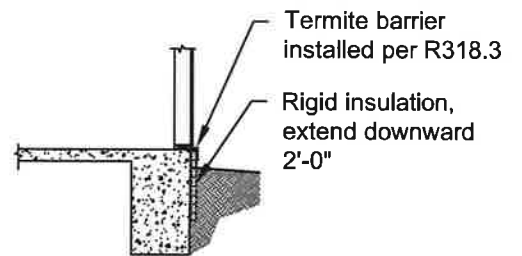
R-19 (vented crawlspace)

R-10 to R-13 wall @ unvented crawl space

* Water pipe insulation required on hot water recirculation systems and mechanical piping only

1,500 SF or less - 4" dia.
 1,501 - 2,400 SF - 6" dia
 2,401 SF or more - 8" dia

with balancing damper and connected to return air or HVAC unit ahead of filter



REQUIRED