



## Case # 70-2024 - 611 N. Garth Avenue Rezoning



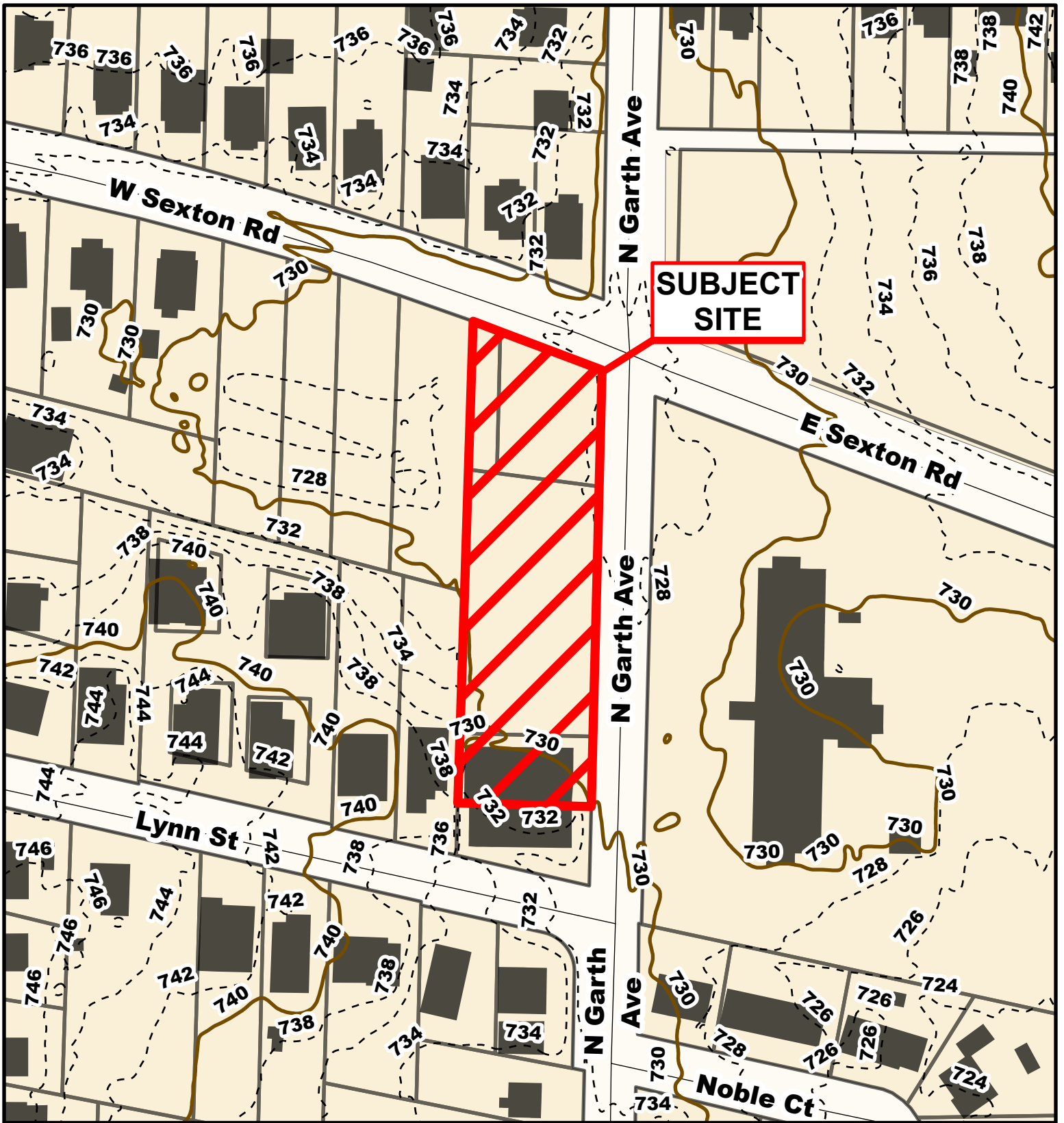
 City Zoning  Parcels

Parcel Data Source: Boone County Assessor

Created by The City of Columbia - Community Development Department

2022 Imagery: NearMap

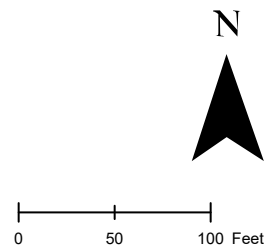
0 100 200 Feet

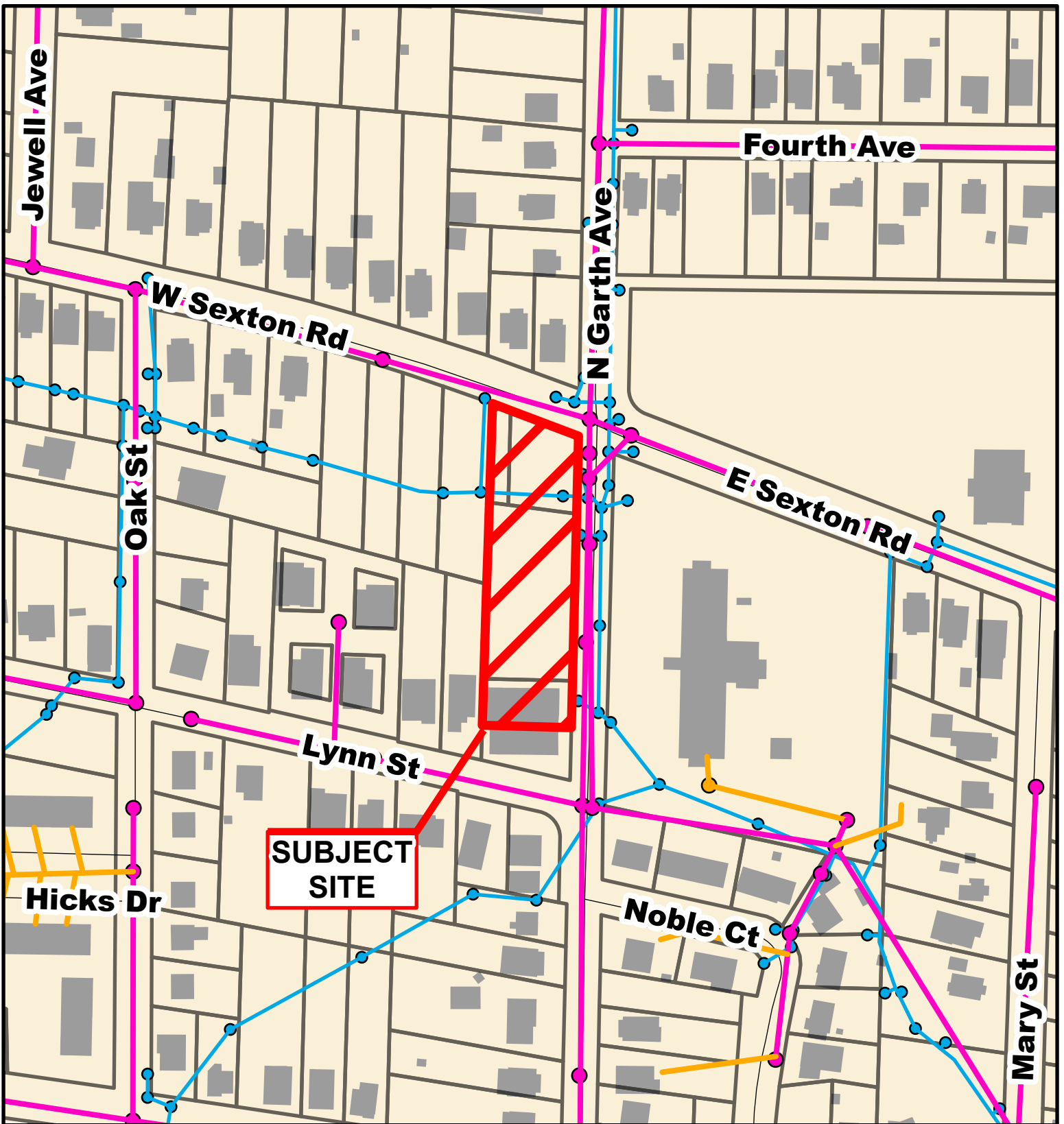


## Case # 70-2024 - 611 N. Garth Avenue Rezoning



- 10 Foot Contour Lines
- 2 Foot Contour Lines
- Parcels





## Case # 70-2024 - 611 N. Garth Avenue Rezoning



- City Sanitary Line
- City Storm Lines
- Private Sanitary Line
- Parcels

