

**GENERAL NOTES**

TRAFFIC CONTROL DEVICES SHALL COMPLY WITH THE MUTCD.

CONTRACTOR SHALL MAINTAIN A MINIMUM LANE WIDTH OF 12' AT ALL TIMES FOR ANY OPEN LANE OF TRAFFIC.

CONTRACTOR SHALL REFER TO THE CURRENT EDITION OF THE MODOC MANUAL OF TRAFFIC CONTROL FOR FIELD OPERATIONS FOR INFORMATION ON THE PROPER DEPLOYMENT OF TRAFFIC CONTROL DEVICES.

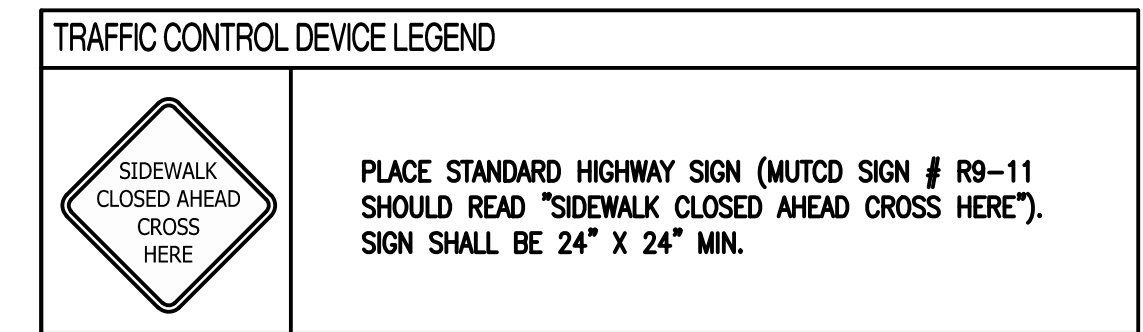
A 5' WIDE SIDEWALK PATH ON THE SIDEWALK TO THE WEST OF THE WORK AREA SHALL BE MAINTAINED THROUGHOUT THE DURATION OF THIS PROJECT. ONCE THE PROJECT GOES VERTICAL, THE CONTRACTOR SHALL CONSTRUCT A PROTECTED WALKWAY WITH SCAFFOLDING ALONG THE ENTIRE LENGTH OF THE WEST PROPERTY LINE. THE WALKWAY SHALL HAVE 2" PLYWOOD LINING THE EAST VERTICAL FACE OF THE SCAFFOLDING. THE TOP SHALL BE PROTECTED BY PLYWOOD AND DUNNAGE. WALKWAY SHALL BE DESIGNED TO RESIST WIND AND IMPACT LOADINGS FROM FALLING DEBRIS. WEST SIDE OF THE WALKWAY SHALL REMAIN OPEN TO THE COURTHOUSE PLAZA VIEW. THE WALKWAY SHALL BE PROVIDED WITH LIGHTING ON A TIMER OR PHOTOCELL AND SYNCHRONIZED WITH THE COURTHOUSE PLAZA LIGHTING SCHEDULE. THE CLEAR PATH INSIDE THE WALKWAY SHALL BE 5' WIDE BY 80" TALL MINIMUM.

WORK SHALL BE COMPLETED BETWEEN 7:00AM AND 7:00PM

CONTRACTOR SHALL NOTIFY CITY OF COLUMBIA COMMUNITY DEVELOPMENT THREE WEEKS PRIOR TO ANY CLOSURE MADE ACCORDING TO THIS PLAN. ALL TIMES FOR CLOSURE SHALL BE APPROVED BY THE CITY OF COLUMBIA PRIOR TO IMPLEMENTATION OF THIS PLAN.

CONTRACTOR IS RESPONSIBLE FOR NOTIFYING THE FOLLOWING AGENCIES, AS REQUIRED, IMMEDIATELY PRIOR TO CLOSURE OF STREET, DURING CONSTRUCTION FOR INSPECTIONS AND AGAIN WHEN WORK IS COMPLETE AND STREET IS REOPENED:

SITE DEVELOPMENT (ROW INSPECTIONS)	874-7474
BUILDING SAFETY (PLUMBING/BUILDING INSPECTIONS)	874-7474
JOINT COMMUNICATIONS (EMERGENCY SERVICES)	874-8471
COLUMBIA TRANSIT (CITY BUSES)	874-7282
PARKING ENFORCEMENT (PARKING METERS)	874-7674
PUBLIC WORKS STREET DIVISION (STREET PATCHING)	874-8289



Page 6H-60 2003 Edition

**Notes for Figure 6H-28—Typical Application 28**  
Sidewalk Closures and Bypass Sidewalks

**Standard:**

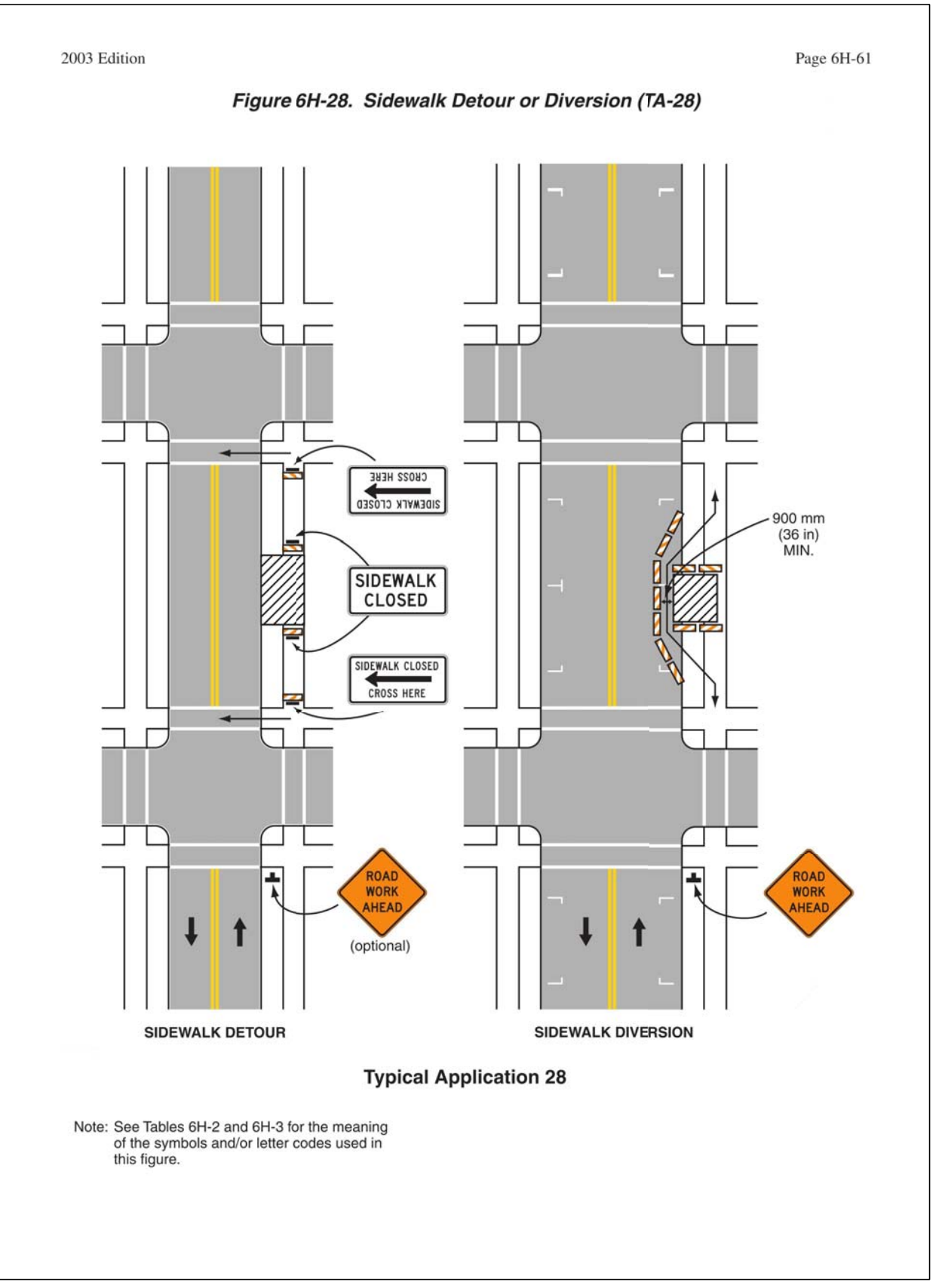
- When crosswalks or other pedestrian facilities are closed or relocated, temporary facilities shall be detectable and shall include accessibility features consistent with the features present in the existing pedestrian facility.

**Guidance:**

- Where high speeds are anticipated, a temporary traffic barrier and, if necessary, a crash cushion should be used to separate the temporary sidewalks from vehicular traffic.
- Audible information devices should be considered where midblock closings and changed crosswalk areas cause inadequate communication to be provided to pedestrians who have visual disabilities.

**Option:**

- Street lighting may be considered.
- Only the TTC devices related to pedestrians are shown. Other devices, such as lane closure signing or ROAD NARROWS signs, may be used to control vehicular traffic.
- For nighttime closures, Type A Flashing warning lights may be used on barricades that support signs and close sidewalks.
- Type C Steady-Burn or Type D 360-degree Steady-Burn warning lights may be used on channelizing devices separating the temporary sidewalks from vehicular traffic flow.
- Signs, such as KEEP RIGHT (LEFT), may be placed along a temporary sidewalk to guide or direct pedestrians.



Architecture  
Interior Design  
Planning  
Sustainability  
2801 Woodard Drive, Suite 103  
Columbia, MO 65202  
573.443.1407  
www.soa-inc.com

Missouri Certificate of Authority Number: 000826

**East 280 LLC**  
**Walnut Professional Building**  
807 East Walnut  
Columbia, MO 65201

SITE/CIVIL ENGINEER  
**CROCKETT**  
ENGINEERING CONSULTANTS  
2808 North Stadium Boulevard  
Columbia, MO 65202  
www.crockettengineering.com  
Crockett Engineering Consultants, LLC  
Missouri Certificate of Authority  
#0000191501

ISSUE FOR BID

REVISION	DATE
12/15/2016	
01/30/2017	

**PEDESTRIAN CONTROL PLAN (PHASE 1)**

**TC 2**

SOA PROJECT 15025