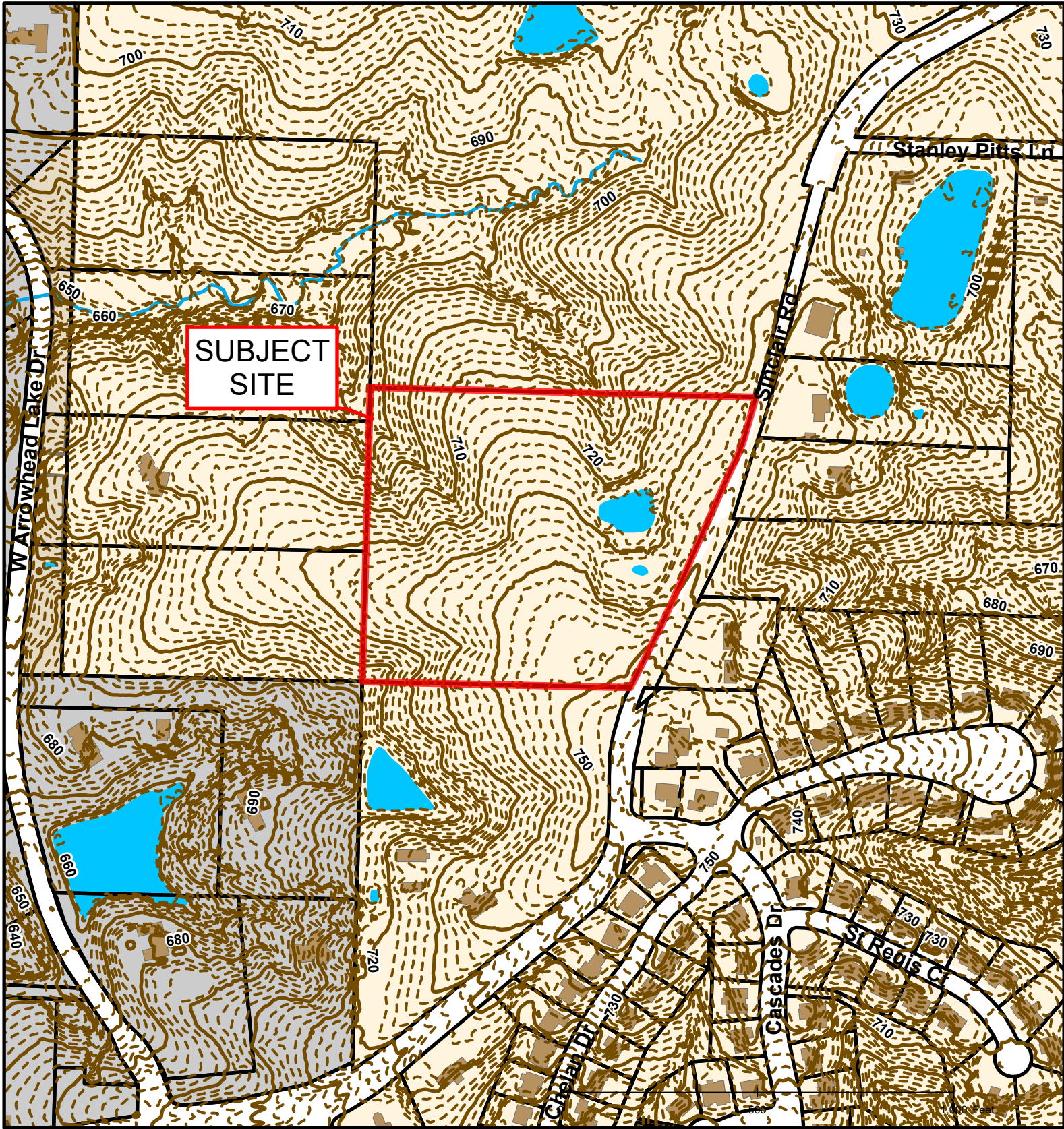


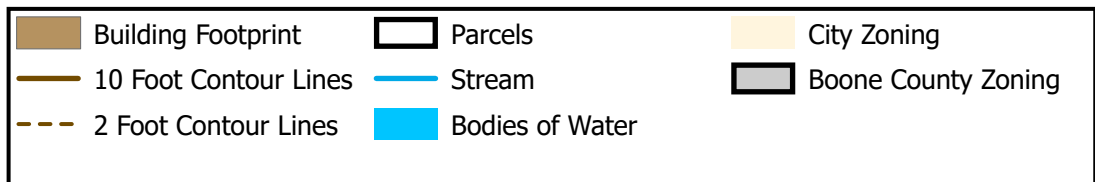


202-2021: Rory Point Subdivision Final Plat





202-2021: Rory Point Subdivision Final Plat

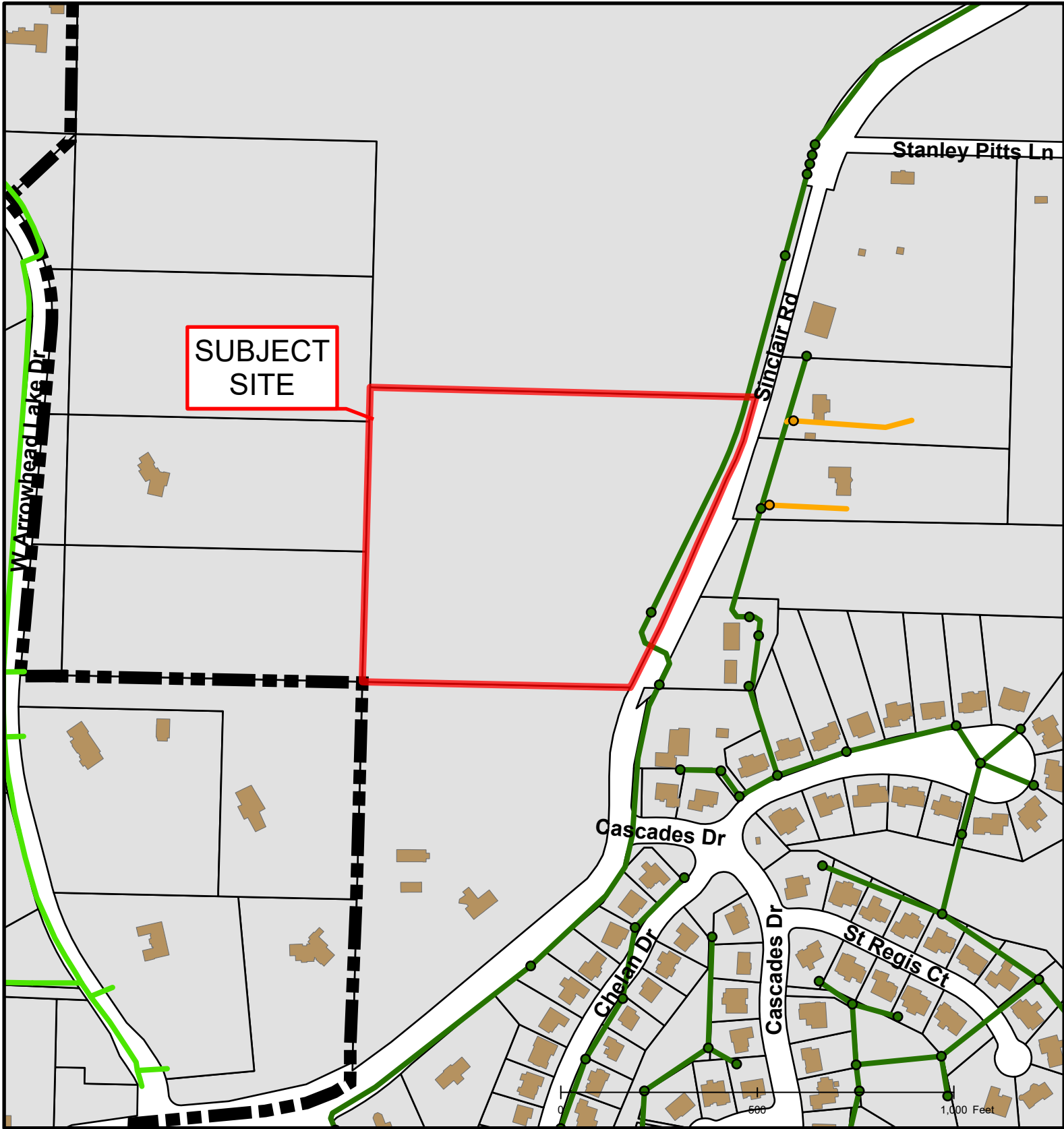


Created by The City of Columbia - Community Development Department

Parcel Data Source: Boone County Assessor

2017 Imagery: Boone County Assessor's Office

Hillshade Data: Boone County GIS



202-2021: Rory Point Subdivision Final Plat

