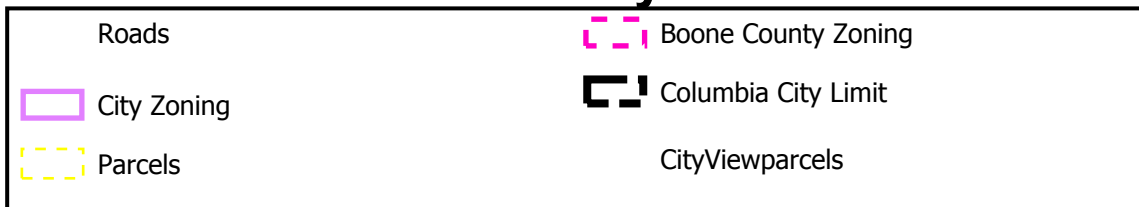


#17-171: Perche Ridge Preliminary Plat

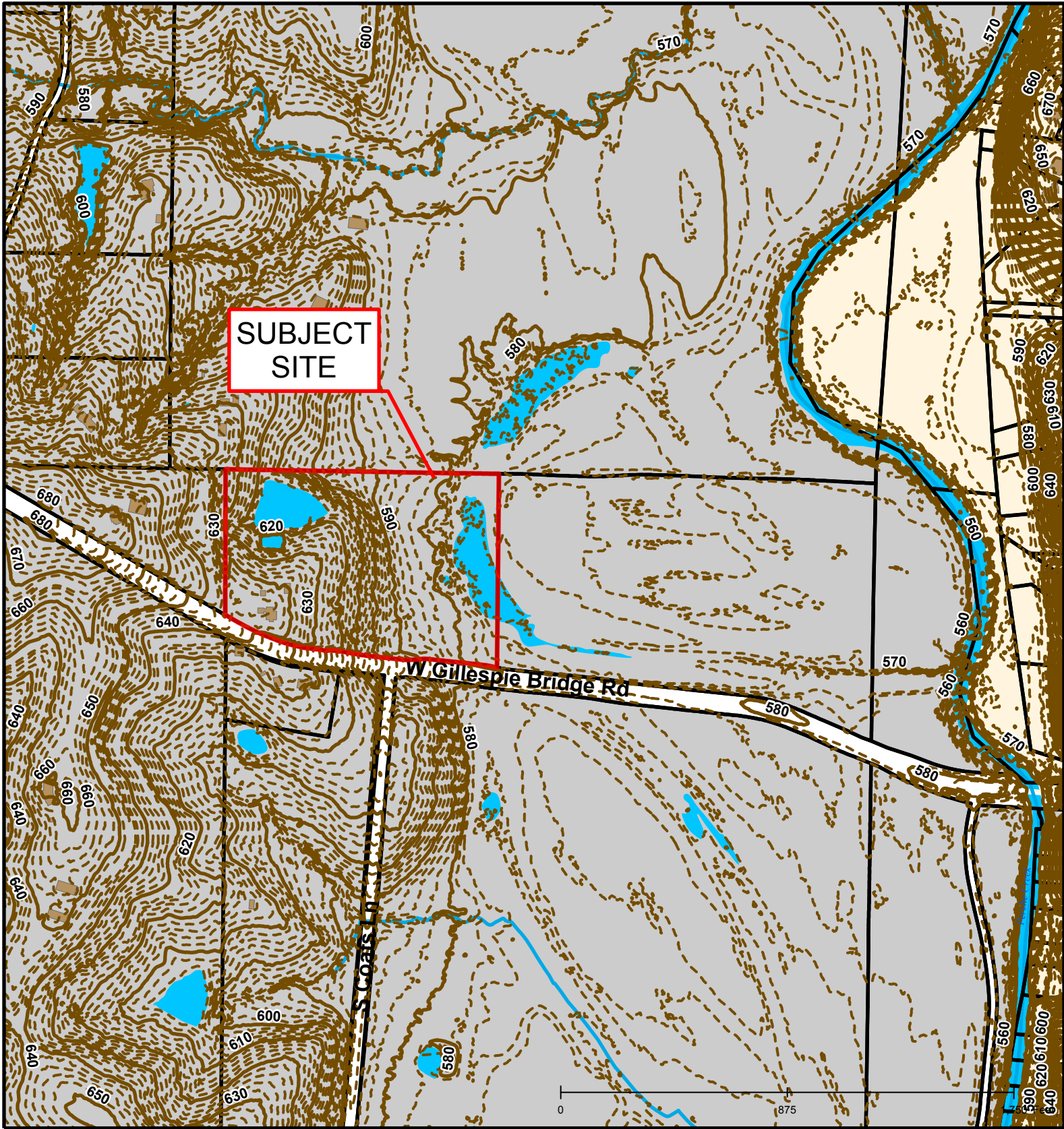


Created by The City of Columbia - Community Development Department

Parcel Data Source: Boone County Assessor








2015 Imagery: Boone County Assessor's Office

Hillshade Data: Boone County GIS Office



SUBJECT SITE

#17-171: Perche Ridge Preliminary Plat

	Roads		Stream		Boone County Zoning
	Building Footprint		Bodies of Water		City Zoning
	Parcels				

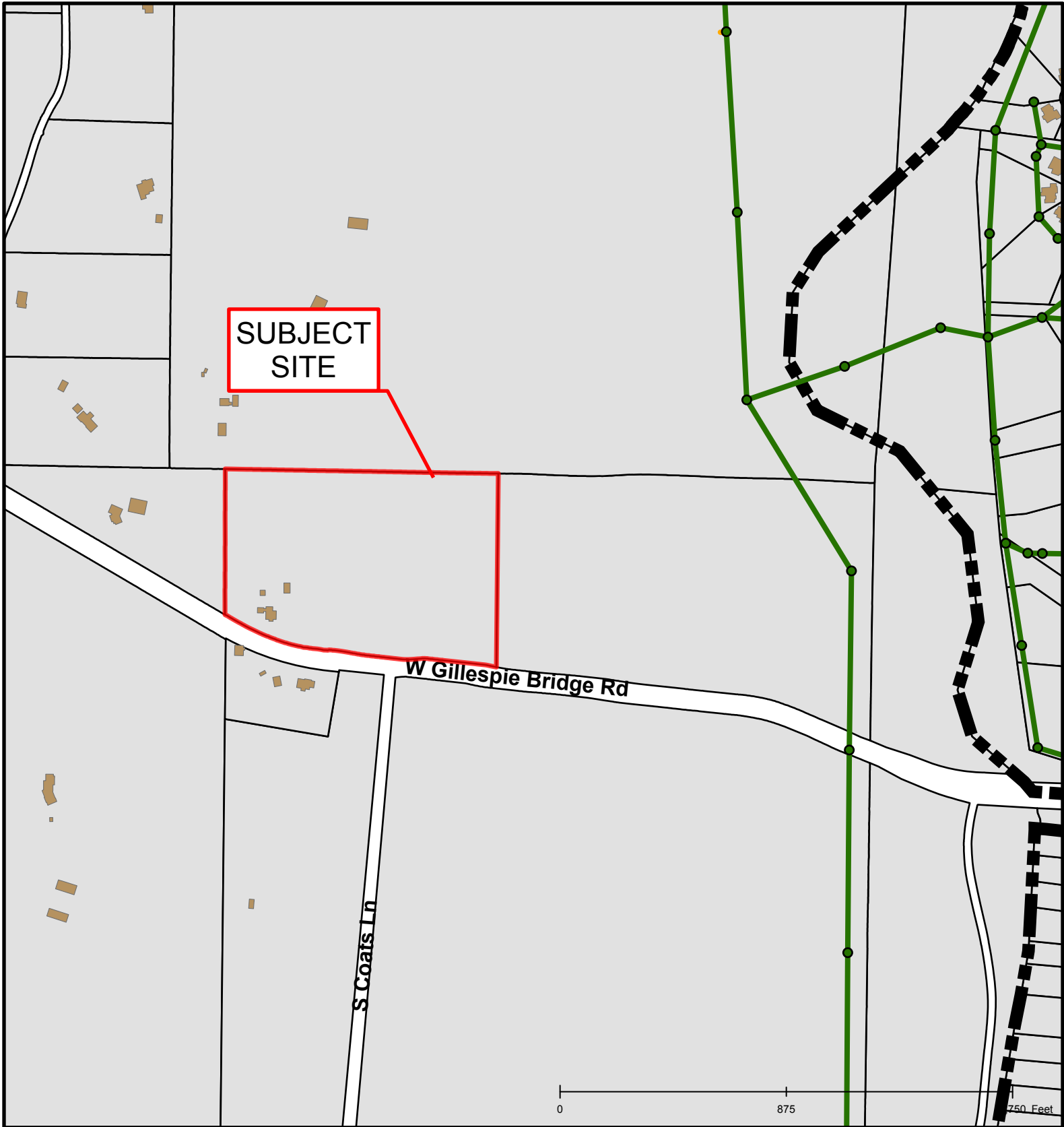


Created by The City of Columbia - Community Development Department

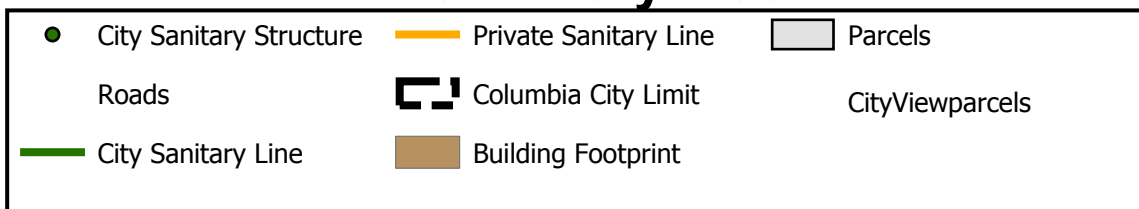
Parcel Data Source: Boone County Assessor

2015 Imagery: Boone County Assessor's Office

Hillshade Data: Boone County GIS Office



#17-171: Perche Ridge Preliminary Plat



Created by The City of Columbia - Community Development Department

Parcel Data Source: Boone County Assessor

2015 Imagery: Boone County Assessor's Office

Hillshade Data: Boone County GIS Office