



Case # 70-2025 - 5961 South Highway KK

Permanent Zoning



Parcel Data Source: Boone County Assessor

Created by The City of Columbia - Community Development Department



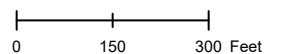
Columbia City Limit

City Property

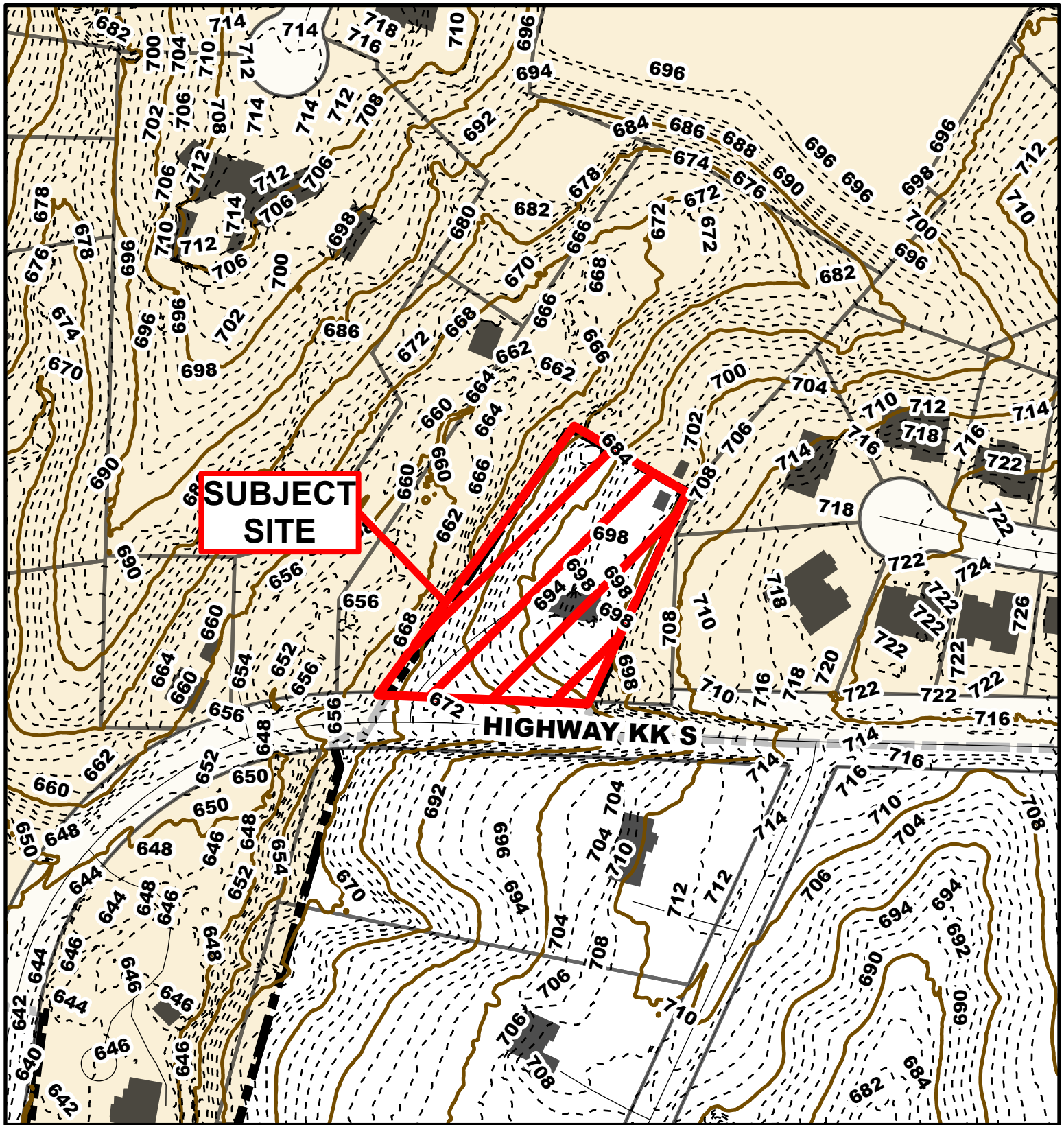
City Zoning

Parcels

N



2024 Imagery: NearMap



Case # 70-2025 - 5961 South Highway KK

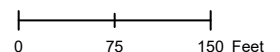
Permanent Zoning

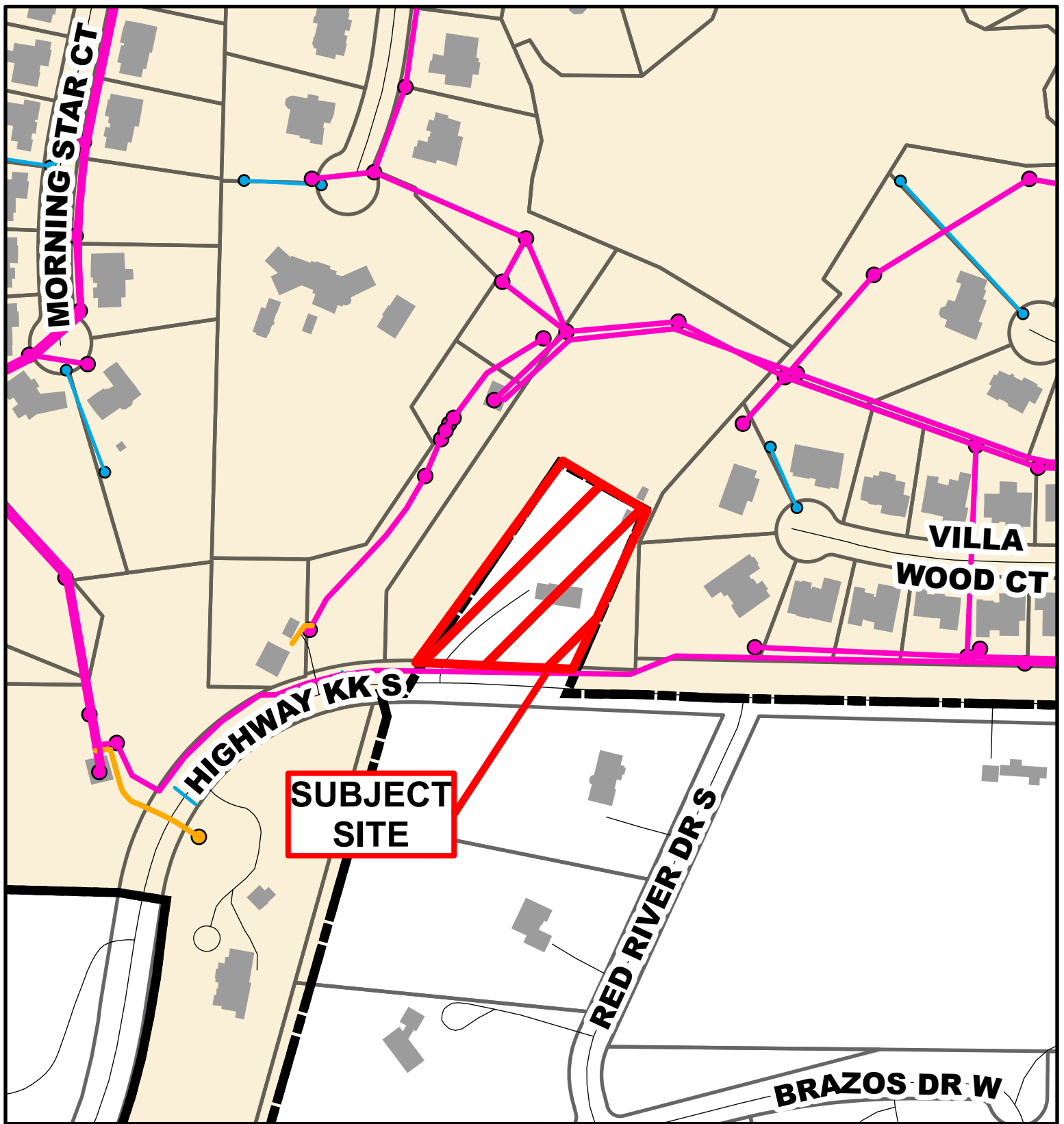


Parcel Data Source: Boone County Assessor

Created by The City of Columbia - Community Development Department

- 10 Foot Contour Lines
- 2 Foot Contour Lines
- City of Columbia
- Parcels





Case # 70-2025 - 5961 South Highway KK

Permanent Zoning



- City Sanitary Line
- City Storm Lines
- Private Sanitary Line
- Parcels
- Columbia City Limit

