

2015 Orthophoto Source: Boone County Assessor

Case #16-144: Schaumburg Subdivision Plat 1 Replat



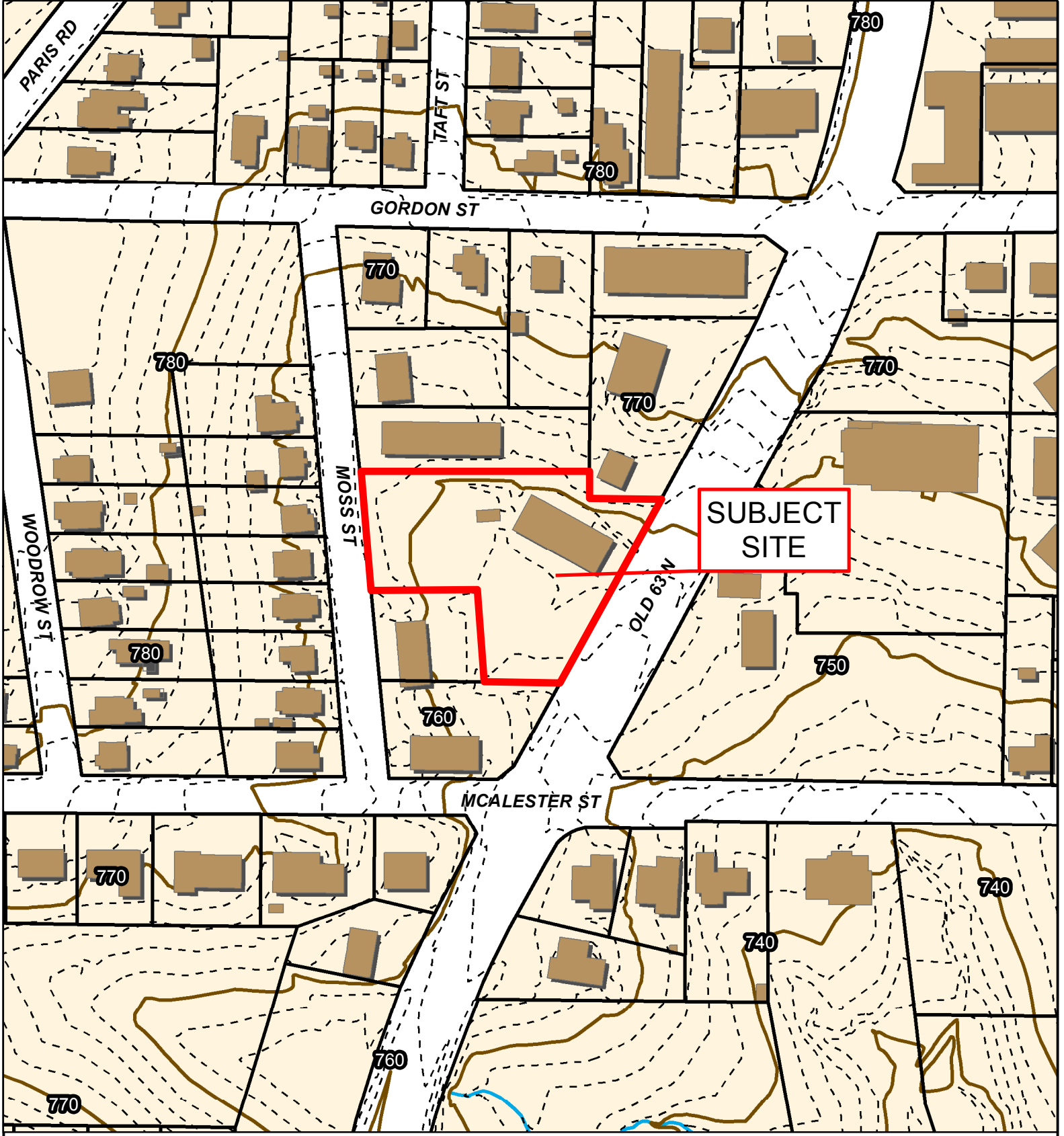
City of Columbia Zoning

U-C Benton Stephens Urban Conservation District



Parcels

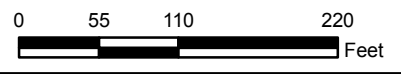


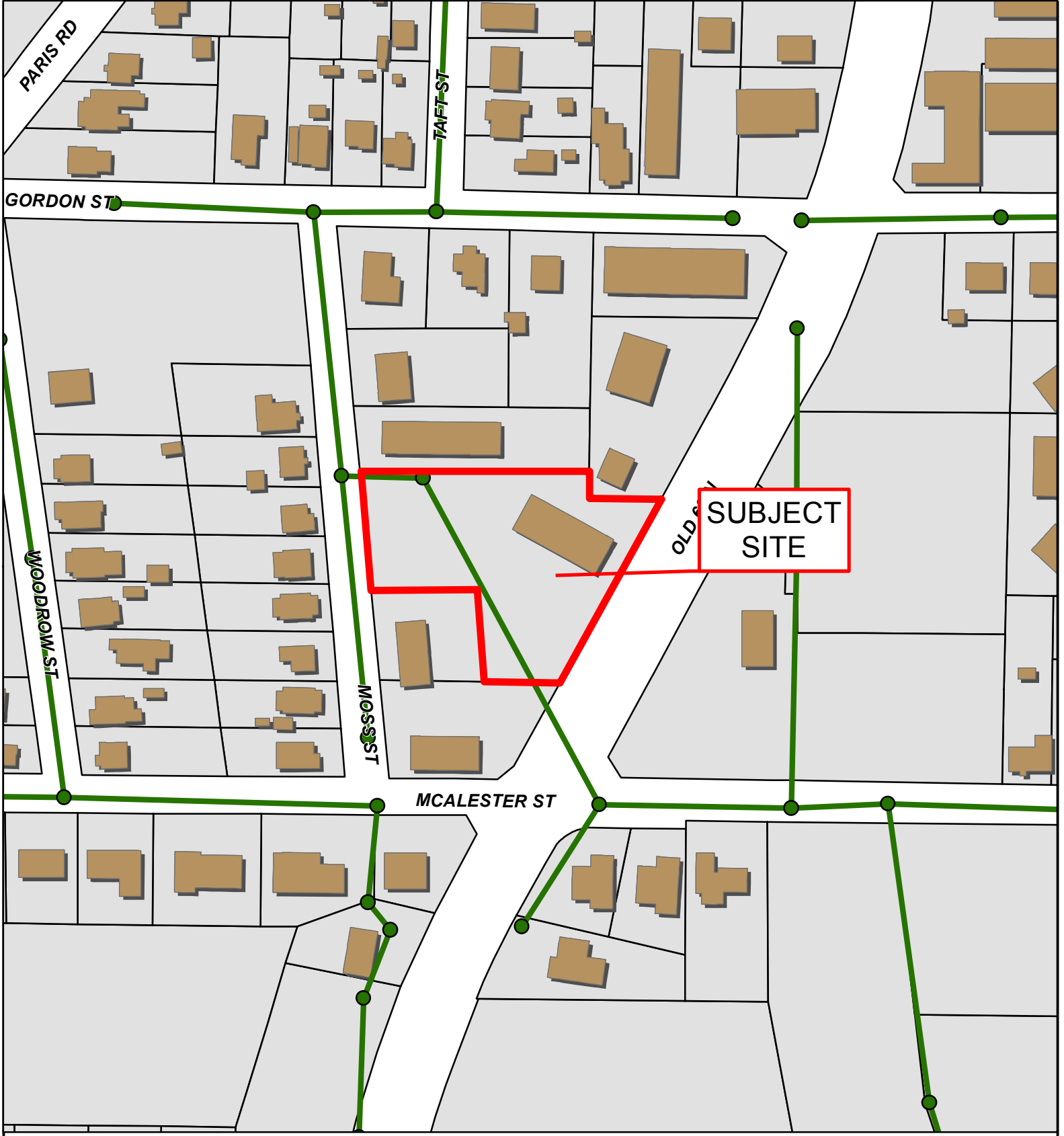


Case #16-144: Schaumburg Subdivision Plat 1 Replat



- 10 Foot Contour Lines
- 2 Foot Contour Lines
- Parcels
- Building Footprint
- 100-Year Flood Plain





Case #16-144: Schaumburg Subdivision Plat 1 Replat



- City Sanitary Structure
- City Sanitary Line
- Building Footprint
- Parcels

