



GENERAL NOTES

TRAFFIC CONTROL DEVICES SHALL COMPLY WITH THE MUTCD.

CONTRACTOR SHALL MAINTAIN A MINIMUM LAKE WIDTH OF 12' AT ALL TIMES FOR ANY OPEN LAKE OF TRAFFIC.

CONTRACTOR SHALL REFER TO THE CURRENT EDITION OF THE MUTCD MANUAL OF TRAFFIC CONTROL FOR FIELD OPERATIONS FOR INFORMATION ON THE PROPER DEPLOYMENT OF TRAFFIC CONTROL DEVICES.

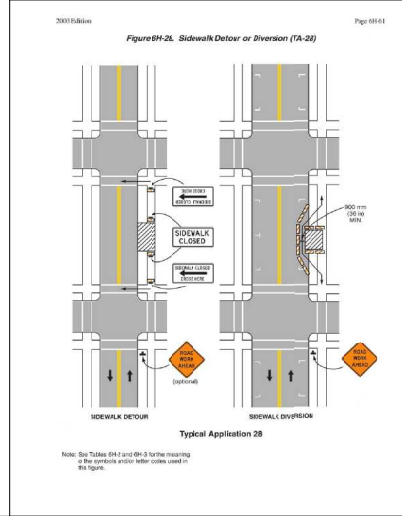
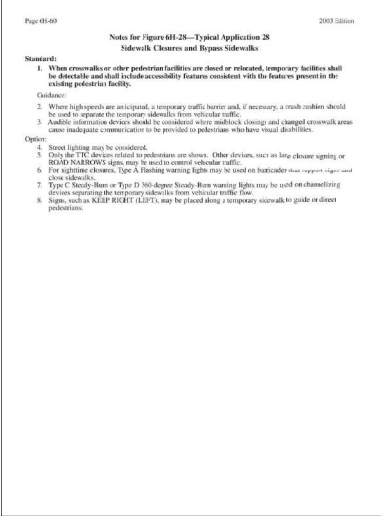
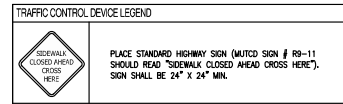
A 5' WIDE SIDEWALK PATH ON THE SIDEWALK TO THE WEST OF THE WORK AREA SHALL BE MAINTAINED THROUGHOUT THE DURATION OF THIS PROJECT. ONCE THE PROJECT GOES VERTICAL, THE CONTRACTOR SHALL CONSTRUCT A PROTECTED WALKWAY WITH SCAFFOLDING ALONG THE ENTIRE LENGTH OF THE WEST PROPERTY LINE. THE WALKWAY SHALL HAVE 2" SPACING USING THE EAST VERTICAL FACE OF THE SCAFFOLDING. THE TOP SHALL BE PROTECTED BY PLUMWOOD AND CHAIN-LINK FENCING. WALKWAYS SHALL BE DESIGNED TO RESIST WIND AND IMPACT CHARGES FROM FALLING DEBRIS. WEST SIDE OF THE WALKWAY SHALL REMAIN OPEN TO THE COURTESIDE PLAZA VEH. THE WALKWAY SHALL BE PROVIDED WITH LIGHTING ON A TIER OF PHOTOCELLS AND SYNCHRONIZED WITH THE COURTESIDE PLAZA LIGHTING SCHEDULE. THE CLEAR PATH INSIDE THE WALKWAY SHALL BE 5' WIDE BY 80' TALL MINIMUM.

WORK SHALL BE COMPLETED BETWEEN 7:00AM AND 7:00PM.

CONTRACTOR SHALL NOTIFY CITY OF COLUMBIA COMMUNITY DEVELOPMENT THREE WEEKS PRIOR TO ANY CLOSURE MADE ACCORDING TO THIS PLAN. ALL TIMES FOR CLOSURE SHALL BE APPROVED BY THE CITY OF COLUMBIA PRIOR TO IMPLEMENTATION OF THIS PLAN.

CONTRACTOR IS RESPONSIBLE FOR NOTIFYING THE FOLLOWING AGENCIES, AS REQUIRED, IMMEDIATELY PRIOR TO CLOSURE OF STREET DURING CONSTRUCTION FOR INSPECTIONS AND AGAIN WHEN WORK IS COMPLETE AND STREET IS REOPENED.

SITE DEVELOPMENT (NOW INSPECTIONS) 874-7474
 BUILDING SAFETY (PLUMBING/WELDING INSPECTIONS) 874-7474
 JOINT COMMUNICATIONS (EMERGENCY SERVICES) 874-8471
 COLUMBIA TUNNEL (CITY ACCESS) 874-2882
 PARKING ENFORCEMENT (PARKING METERS) 874-7674
 PUBLIC WORKS STREET DIVISION (STREET PATCHING) 874-8289



MISSOURI PROFESSIONAL SEAL
 EAST 280 LLC
 STEPHENS
 MISSOURI
 PROFESSIONAL
 ARCHITECTURE

soa
 Architecture
 Interior Design
 Planning
 Sustainability

2801 Woodard Drive, Suite 103
 Columbia, MO 65202
 573.443.1407

www.soa-inc.com

Missouri Certificate of
 Authority Number: 000826

**East 280 LLC
 Walnut Professional Building**
 807 East Walnut
 Columbia, MO 65201

REGISTERED PROFESSIONAL ENGINEER
GROCKETT
 ENGINEERING CONSULTANTS
 1000 N. GARDNER STREET
 COLUMBIA, MISSOURI 65203
 www.grockettengineering.com
 573.443.1407
 1000010001

ISSUE FOR BID
 12/15/2016
 REVISION DATE
 01/30/2017

PEDESTRIAN CONTROL PLAN (PHASE 1)

TC 2

SOA PROJECT 15025

If you must print this drawing, please recycle.