

# #18-156: Copperstone Plat 7 Pedway Relocation Vacation & Dedication



Roads	Boone County Zoning
City Zoning	Columbia City Limit
Parcels	CityViewparcels

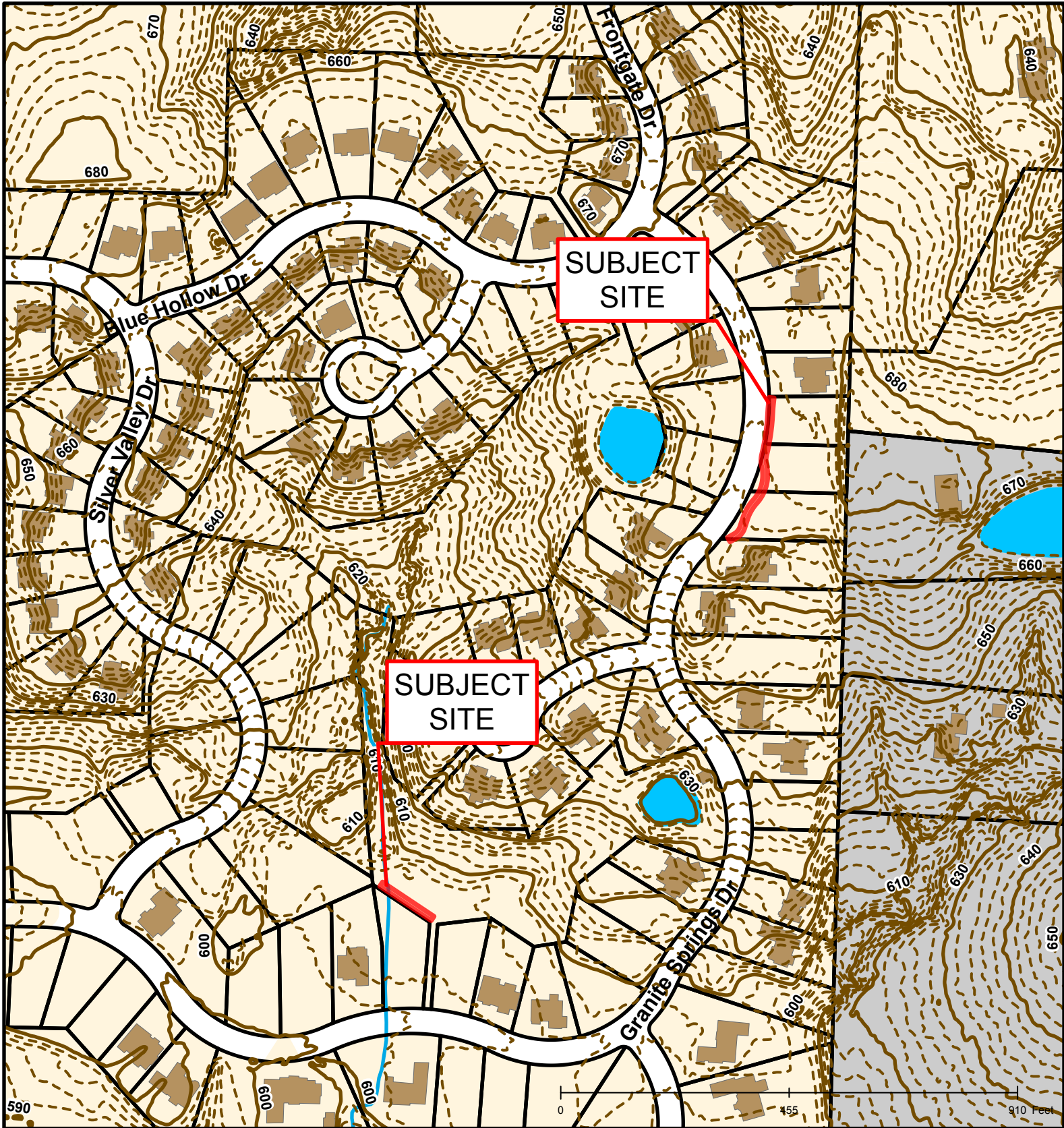


Created by The City of Columbia - Community Development Department

Parcel Data Source: Boone County Assessor

2015 Imagery: Boone County Assessor's Office

Hillshade Data: Boone County GIS Office



## #18-156: Copperstone Plat 7 Pedway Relocation Vacation & Dedication



Roads	2 Foot Contour Lines	Bodies of Water
Building Footprint	Parcels	City Zoning
10 Foot Contour Lines	Streams	Boone County Zoning

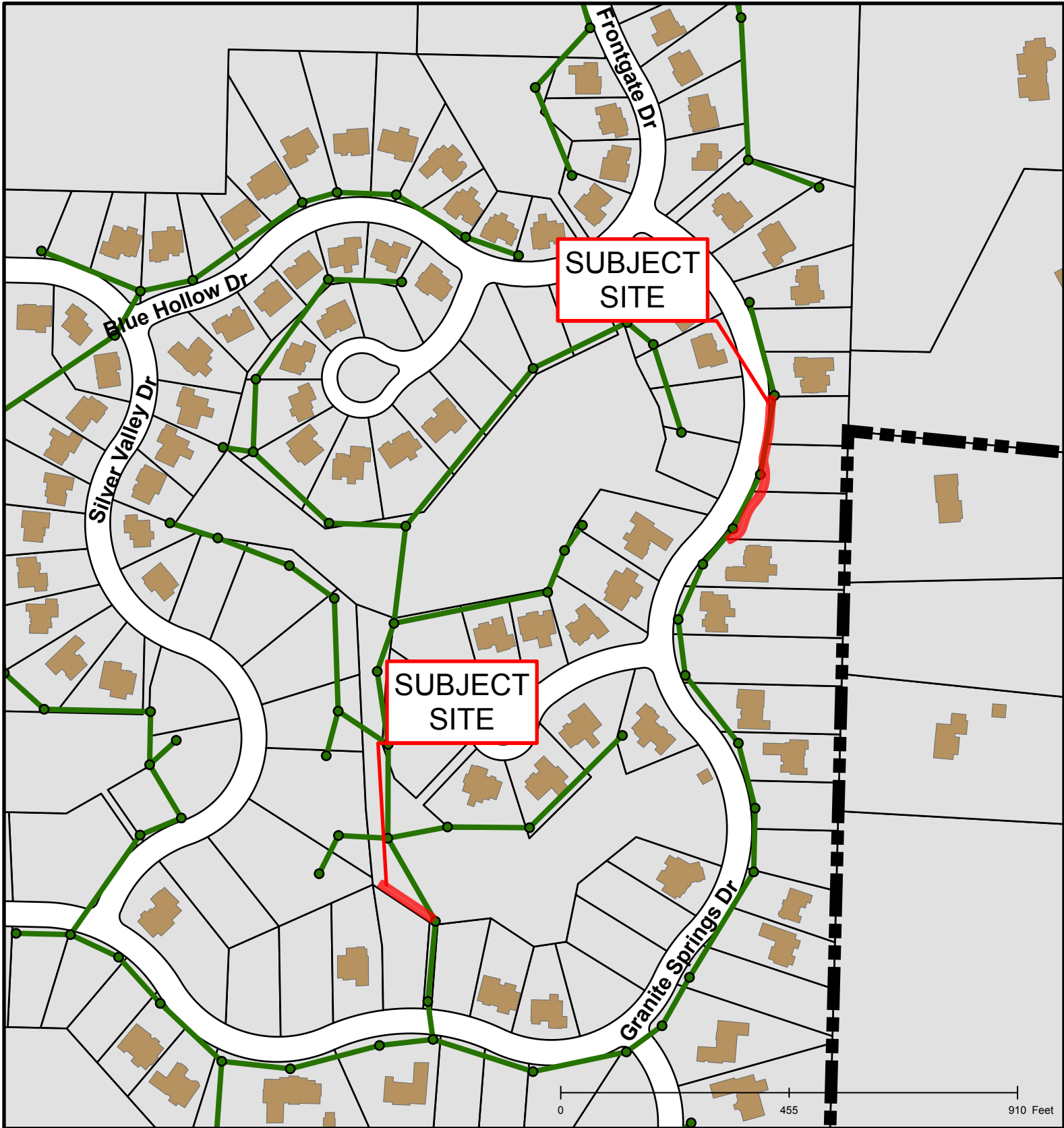


Created by The City of Columbia - Community Development Department

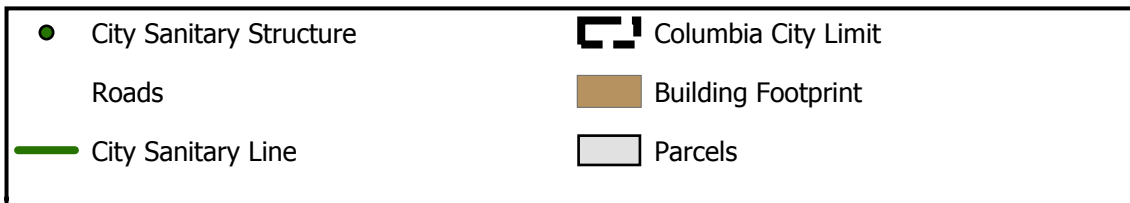
Parcel Data Source: Boone County Assessor

2015 Imagery: Boone County Assessor's Office

Hillshade Data: Boone County GIS Office



# #18-156: Copperstone Plat 7 Pedway Relocation Vacation & Dedication



Created by The City of Columbia - Community Development Department

Parcel Data Source: Boone County Assessor

2015 Imagery: Boone County Assessor's Office

Hillshade Data: Boone County GIS Office