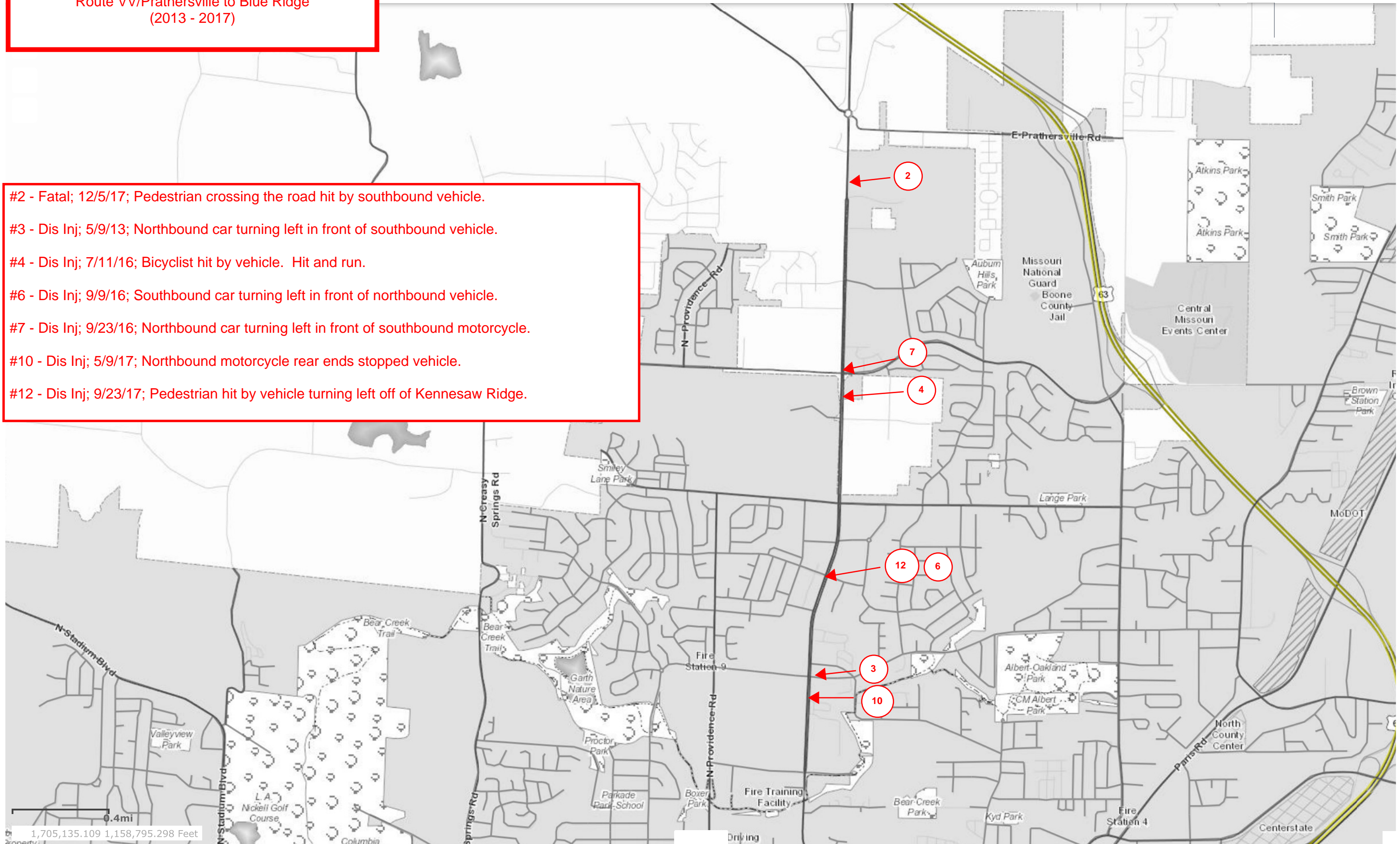


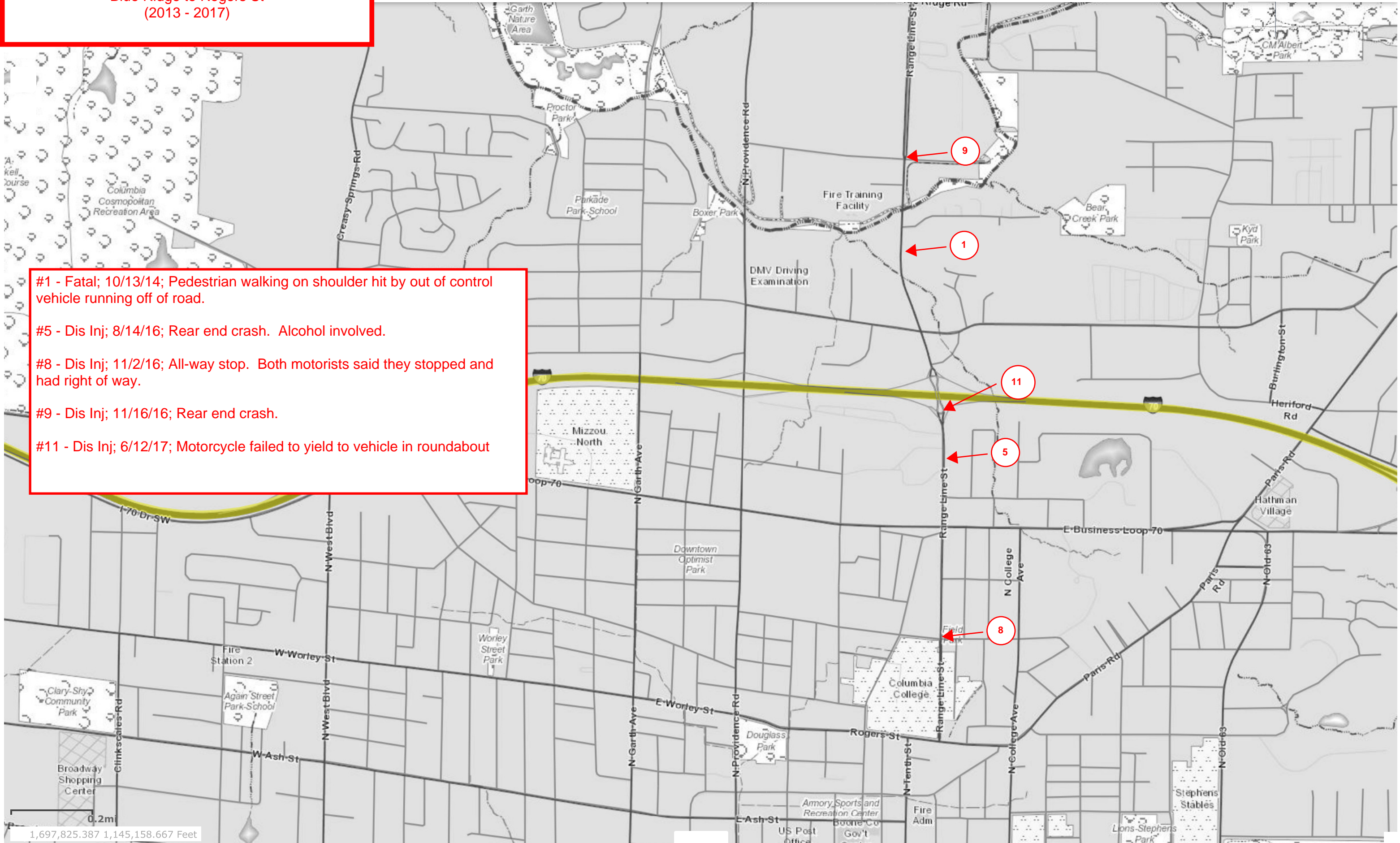
Rangeline Fatal and Disabling Crashes  
Route VV/Prathersville to Blue Ridge  
(2013 - 2017)

- #2 - Fatal; 12/5/17; Pedestrian crossing the road hit by southbound vehicle.
- #3 - Dis Inj; 5/9/13; Northbound car turning left in front of southbound vehicle.
- #4 - Dis Inj; 7/11/16; Bicyclist hit by vehicle. Hit and run.
- #6 - Dis Inj; 9/9/16; Southbound car turning left in front of northbound vehicle.
- #7 - Dis Inj; 9/23/16; Northbound car turning left in front of southbound motorcycle.
- #10 - Dis Inj; 5/9/17; Northbound motorcycle rear ends stopped vehicle.
- #12 - Dis Inj; 9/23/17; Pedestrian hit by vehicle turning left off of Kennesaw Ridge.





Rangeline Fatal and Disabling Crashes  
Blue Ridge to Rogers St  
(2013 - 2017)



- #1 - Fatal; 10/13/14; Pedestrian walking on shoulder hit by out of control vehicle running off of road.
- #5 - Dis Inj; 8/14/16; Rear end crash. Alcohol involved.
- #8 - Dis Inj; 11/2/16; All-way stop. Both motorists said they stopped and had right of way.
- #9 - Dis Inj; 11/16/16; Rear end crash.
- #11 - Dis Inj; 6/12/17; Motorcycle failed to yield to vehicle in roundabout