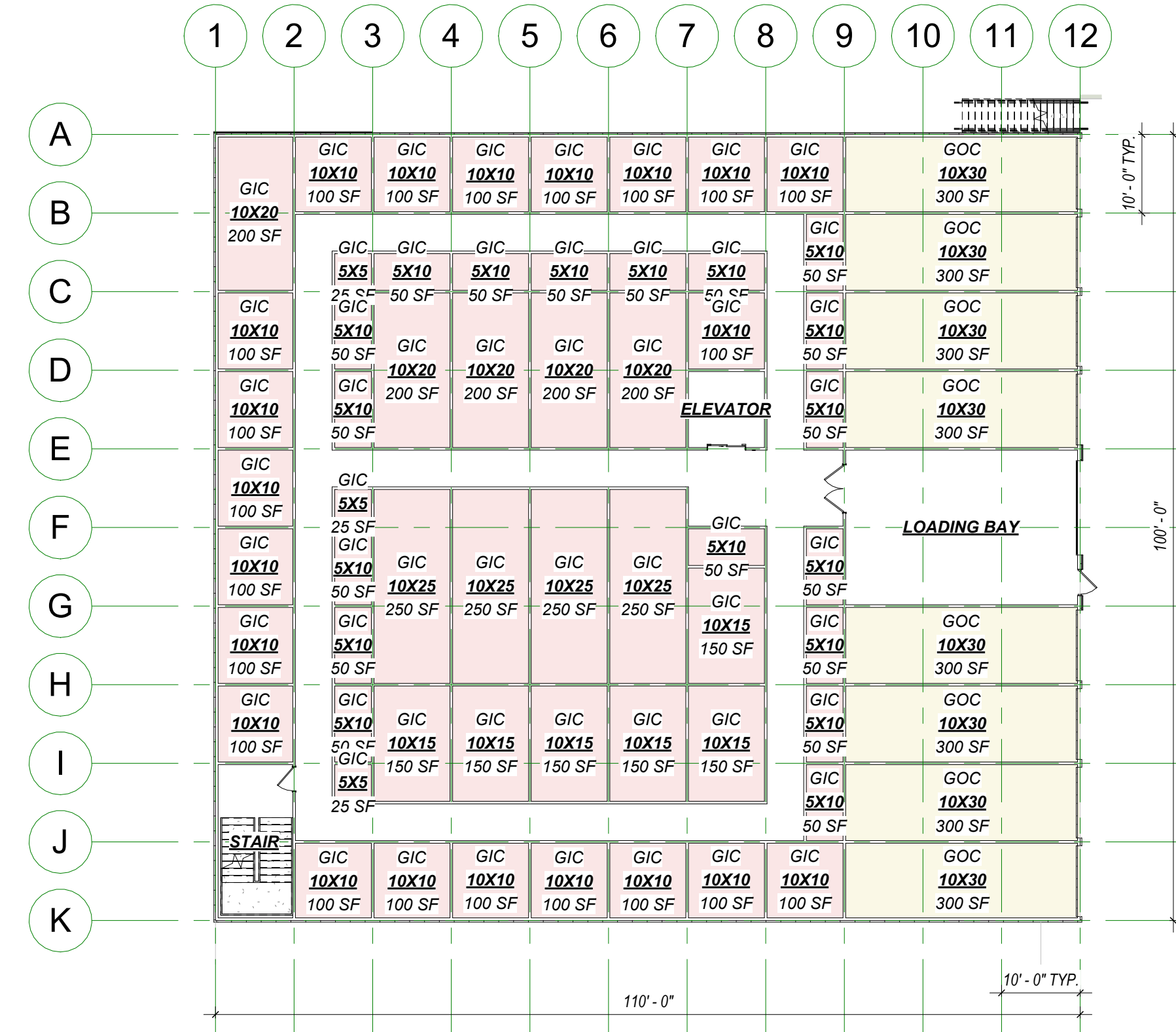
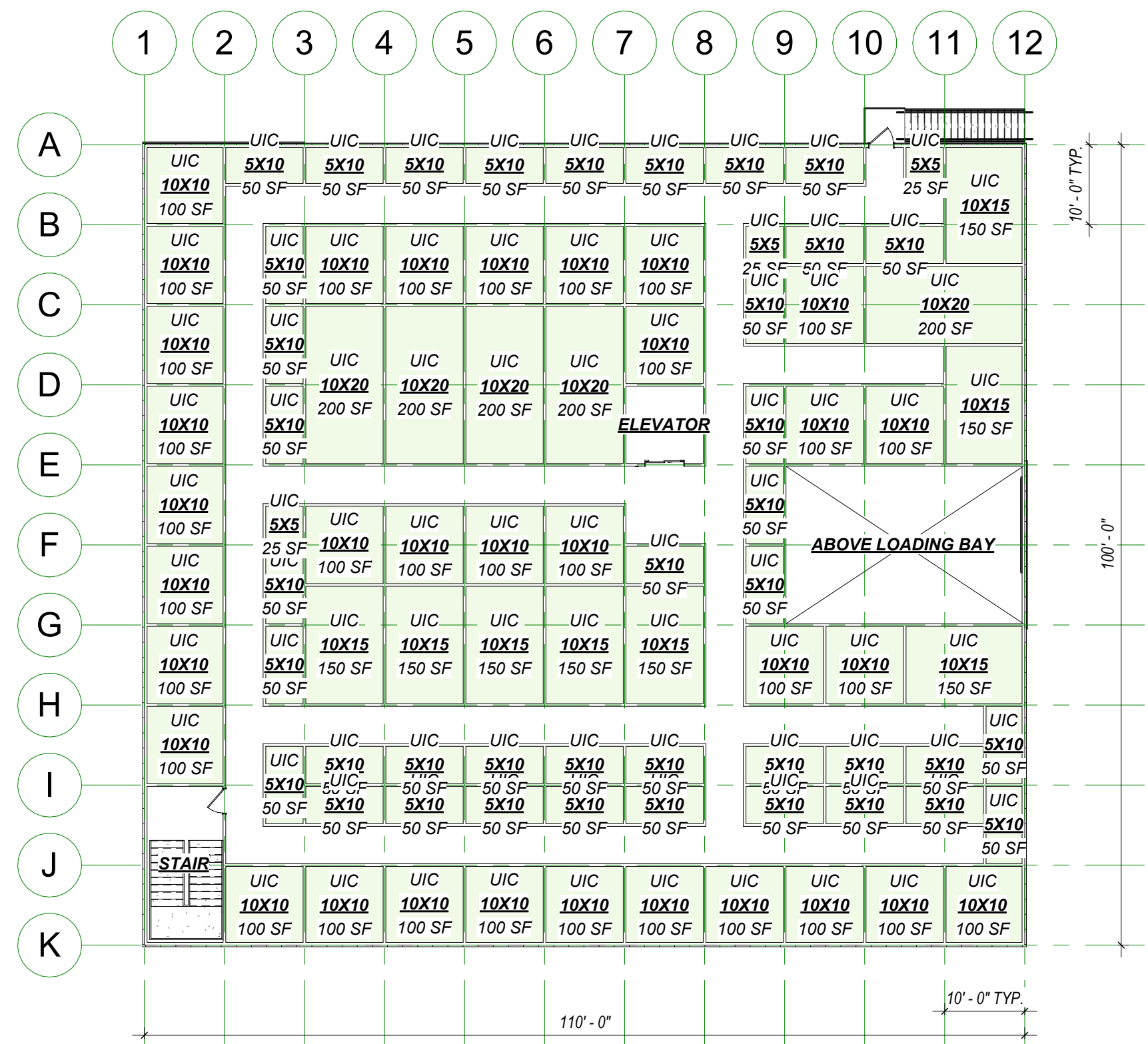


**1 UNIT MIX - 1ST STORY**  
1/16" = 1'-0"



**2 UNIT MIX - 2ND STORY**  
1/16" = 1'-0"



**3 UNIT MIX - 3RD STORY**  
1/16" = 1'-0"

**BUILDING CALCULATIONS**

1ST STORY = 11,000 S.F.  
2ND STORY = 11,000 S.F.  
3RD STORY = 11,000 S.F.  
BLDG TOTAL = 33,000 S.F.

TOTAL GROSS BLDG AREA = 33,000 S.F.  
TOTAL NET STORAGE AREA = 24,175 S.F.  
EFFICIENCY = 24,425 / 33,000 = 72.65%

UNIT SIZE	COUNT	AREA	LEASABLE AREA	PERCENTAGE
5X5	13	25 SF	325 SF	5.7%
5X10	70	50 SF	3500 SF	30.8%
5X15	1	75 SF	75 SF	0.4%
10X10	82	100 SF	8200 SF	36.1%
10X15	28	150 SF	4200 SF	12.3%
10X20	17	200 SF	3400 SF	7.5%
10X25	4	250 SF	1000 SF	1.8%
10X30	12	300 SF	3600 SF	5.3%
TOTAL	227		24300 SF	100.0%

UNIT SIZE	COUNT	AREA	UNIT TYPE
5X5	7	175 SF	GIC
5X10	13	650 SF	GIC
5X15	1	75 SF	GOC
10X10	28	2800 SF	GIC
10X15	12	1800 SF	GIC
10X20	2	300 SF	GOC
10X25	7	1400 SF	GIC
10X30	4	1200 SF	GOC
TOTAL	74	8400 SF	

UNIT SIZE	COUNT	AREA	UNIT TYPE
5X5	3	75 SF	GIC
5X10	18	900 SF	GIC
10X10	21	2100 SF	GIC
10X15	6	900 SF	GIC
10X20	5	1000 SF	GIC
10X25	4	1000 SF	GIC
10X30	8	2400 SF	GOC
TOTAL	65	8375 SF	

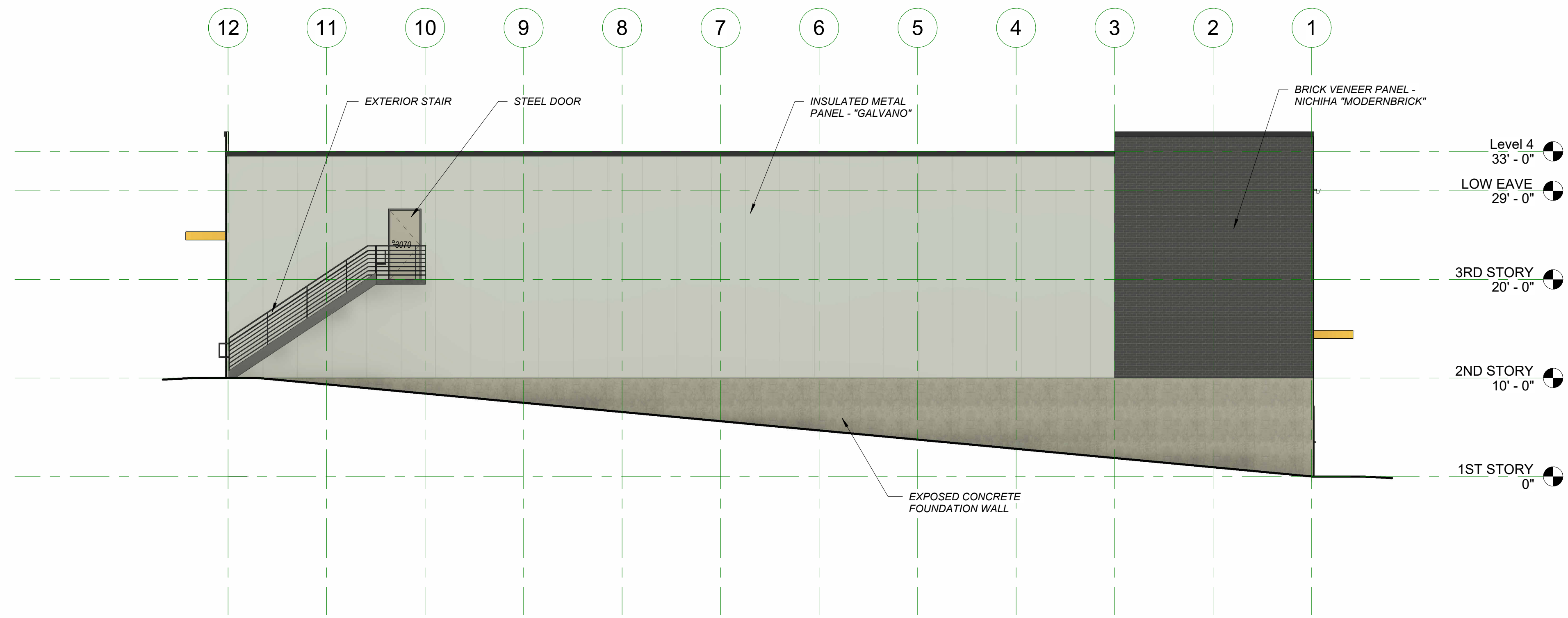
UNIT SIZE	COUNT	AREA	UNIT TYPE
5X5	3	75 SF	UIC
5X10	39	1950 SF	UIC
10X10	33	3300 SF	UIC
10X15	8	1200 SF	UIC
10X20	5	1000 SF	UIC
TOTAL	88	7525 SF	



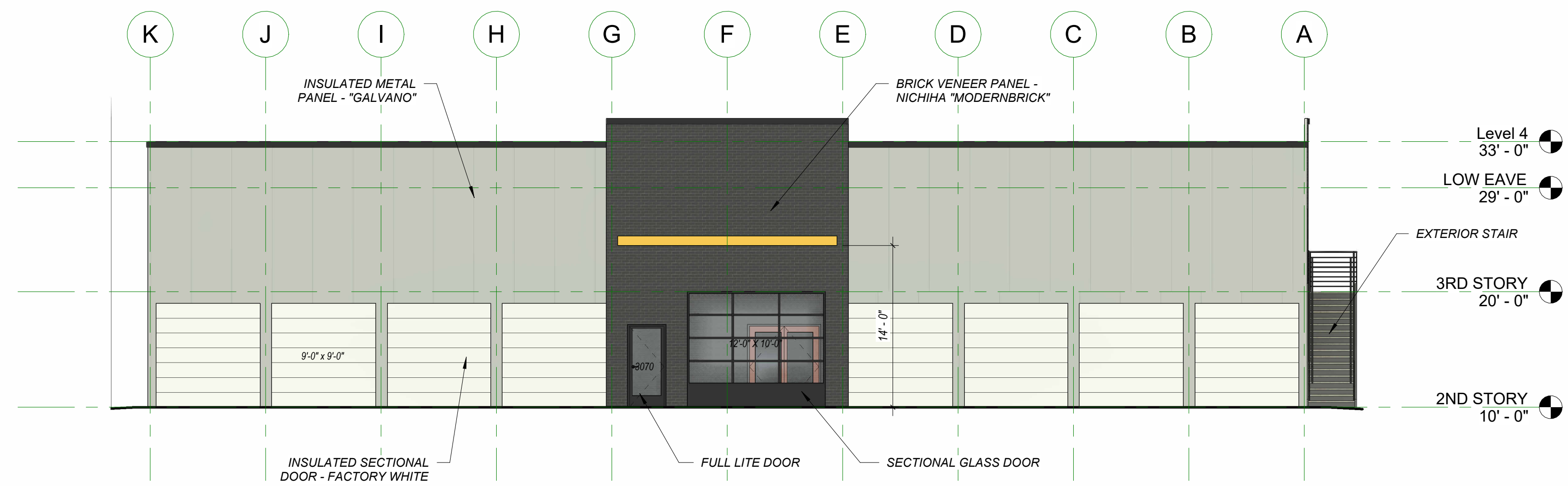
1100 Rhode Island  
Lawrence, Kansas 66044  
785 - 749 - 5806

UNIT MIX - 1ST, 2ND,  
3RD STORY

Date: 20240109  
Drawn by: WCTJ  
Checked by:  
Revisions:



**1 NORTH ELEVATION**  
1/8" = 1'-0"



**2 EAST ELEVATION**  
1/8" = 1'-0"



1 SOUTHWEST VIEW



2 SOUTHEAST VIEW



3 NORTHEAST VIEW