

THESHOPSATSHARPEND.COM

November 20, 2023

Mr. Timothy Teddy
City of Columbia
Community Development Director
P.O. Box 6015
Columbia, MO 65205

RE: Sharp End Street Signs
Sharp End Historic Business District
Columbia, Missouri

Dear Mr. Teddy:


Please accept this letter as a formal request on behalf of the organizations noted below to add a recognition of the "Sharp End" to the city street signs in the Sharp End Historic Business District.


We would like the signs to include text at the bottom that says "Historic Sharp End." An example, based on other historic street name signs in Columbia, is attached.

Please let us know if you need anything else regarding this request.

Sincerely,


Barbra Horrell
Sharp End Heritage Committee


Nickie Davis
Downtown Community
Improvement District


Benjamin A. Ross
Regional Economic Development, Inc


Darin Preis
Central Missouri Community Action

Enclosure: Emails from July 24, 2023
Example sign text



Example Street Sign

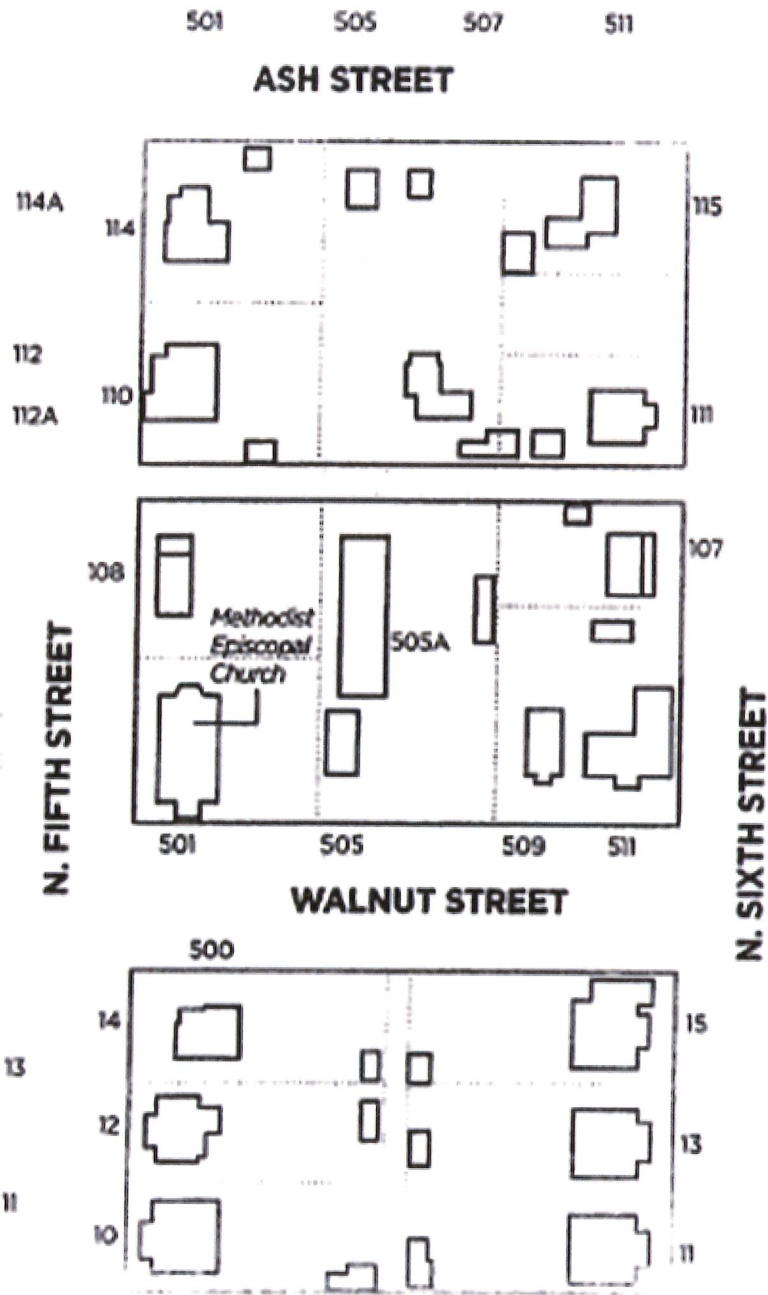
Benjamin Ross

From: Benjamin Ross
Sent: Monday, July 24, 2023 3:13 PM
To: Timothy Teddy; Shane Creech
Cc: De'Carlon Seewood; Stacey Button; Todd Hoiem
Subject: RE: REDI - Sharp End business district street sign idea
Attachments: Sharp End Business Dist - GE reduced.pdf; Sharp End Tribune Insert.pdf

Hi Tim,

Based on the attached information, I was including all the street signs at:

5th & Walnut
6th & Walnut
5th & Ash
6th & Ash



Thanks,
Ben



Benjamin A. Ross, P.E., PTOE
Vice President - Engineering

[573.449.2646 ext. 226](tel:573.449.2646)

www.ess-inc.com

bross@ess-inc.com



Licensed Professional Engineer in MO, KS, TX, IL

From: Timothy Teddy <Timothy.Teddy@como.gov>

Sent: Monday, July 24, 2023 3:08 PM

To: Shane Creech <Shane.Creech@como.gov>

Cc: Benjamin Ross <bross@ess-inc.com>; De'Carlton Seewood <decarlon.seewood@como.gov>; Stacey Button <Stacey.Button@como.gov>; Todd Hoiem <thoien@hawthornbank.com>

Subject: Re: REDI - Sharp End business district street sign idea

Ben,

Let us know which streets, and the locations for the historic Sharp End street signs. Are you including North Fifth, North Sixth, and the 500 block of East Ash in addition to Walnut?

Timothy Teddy, Community Development Director
City of Columbia
701 East Broadway
Columbia, MO 65205

(573) 874-7318

On Mon, Jul 24, 2023 at 2:42 PM Shane Creech <Shane.Creech@como.gov> wrote:

Ben,

I have included Tim Teddy in this conversation. Community Development has a process to add historical names which he can speak to better than myself. Seems like the City has done several of these the last few years.

Thanks,

Shane S. Creech, P.E.
Public Works Director
City of Columbia, Missouri
Shane.Creech@CoMo.gov

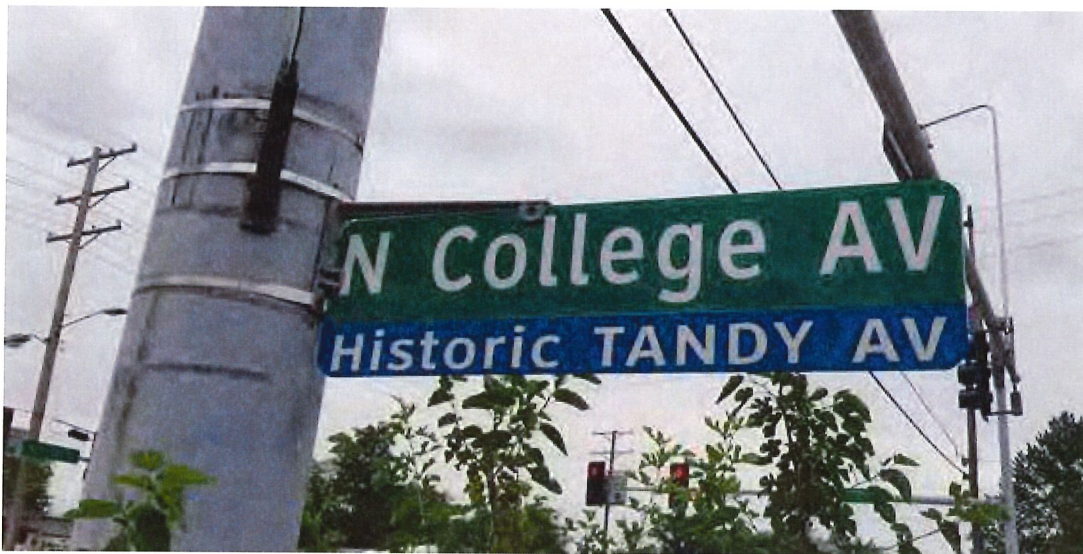
On Mon, Jul 24, 2023 at 2:25 PM Benjamin Ross <bross@ess-inc.com> wrote:

Hi Shane:

In my capacity as REDI Board Chair, I have regular meetings with De'Carlon about various REDI related issues. We met earlier today and one of the items we talked about was possibly adding information about the historic Sharp End business district to the street signs in the area.

We do not have a recommendation on the exact wording or sign colors but would like to learn more about the process to modify the street signs. De'Carlon asked that I send you this information and ask for your feedback on the process to change the street signs, cost, etc.

I had something like this in mind:




Walnut St Sharp End


Thanks,

Ben



Benjamin A. Ross, P.E., PTOE
Vice President - Engineering

 [573.449.2646 ext. 226](tel:573.449.2646)

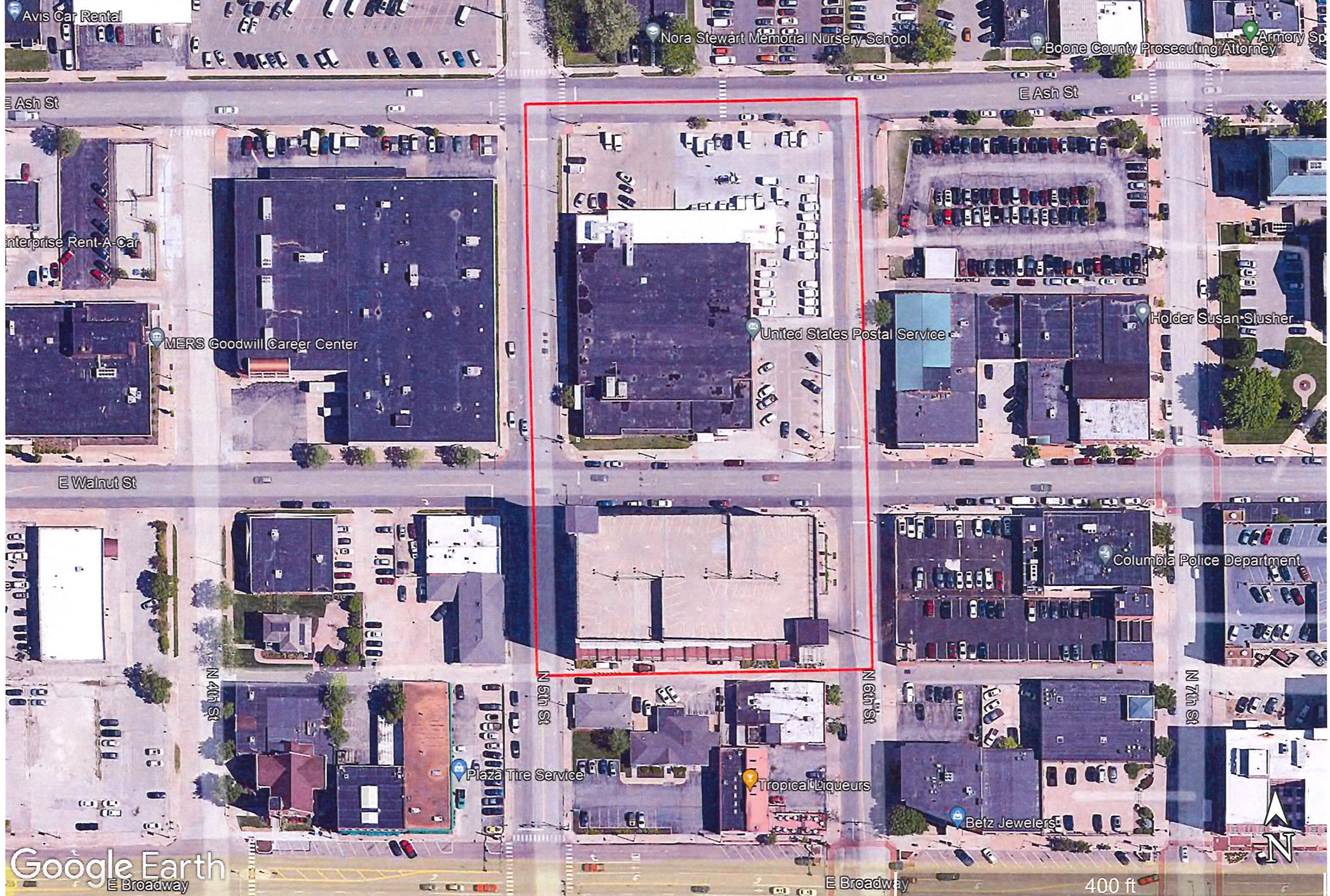
 www.ess-inc.com

 brross@ess-inc.com



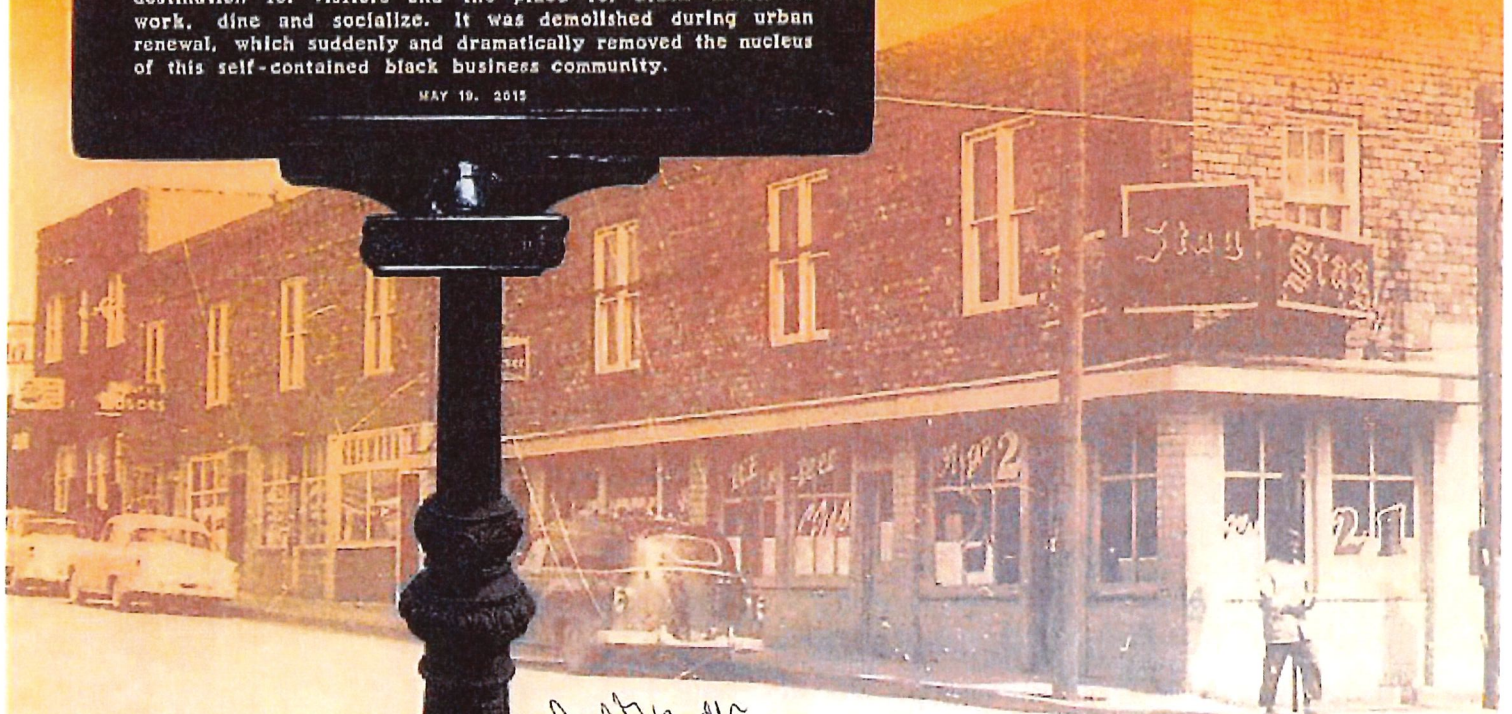
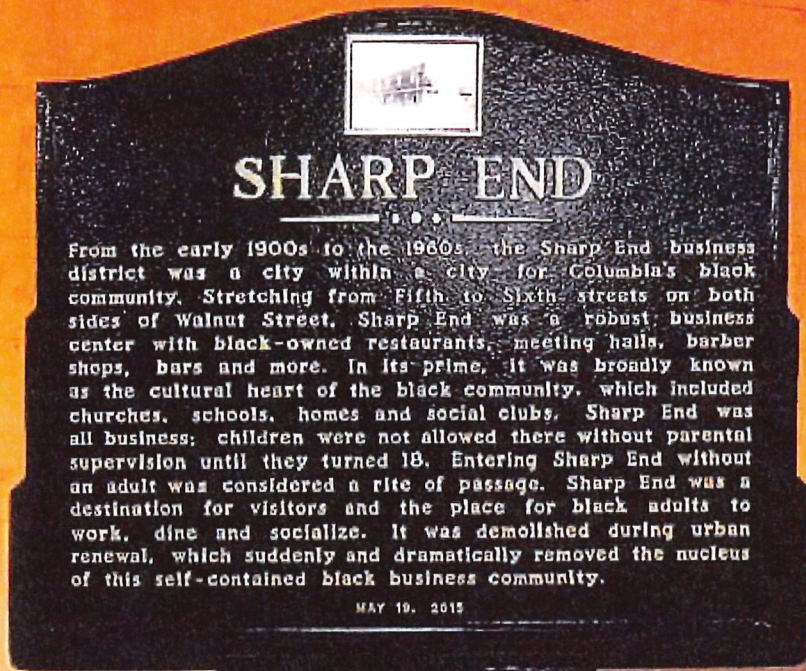
Licensed Professional Engineer in MO, KS, TX, IL

Sharp End Business District



Columbia's Historic Sharp End

By Rudi Keller



With support from



University of Missouri

*No Power
Value Near
a 16 was Near
Special Services
District
1/28/15
AAR*

COLUMBIA DAILY
TRIBUNE

May 20, 2015