

Source: Nearmap. <https://www.nearmap.com/us/en>

Case # 49-2026 - SE & SW corner Rolling Hills & Richland Road PD Plan and Preliminary Plat



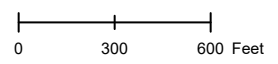
- Columbia City Limit
- City Zoning
- City Property
- Parcels

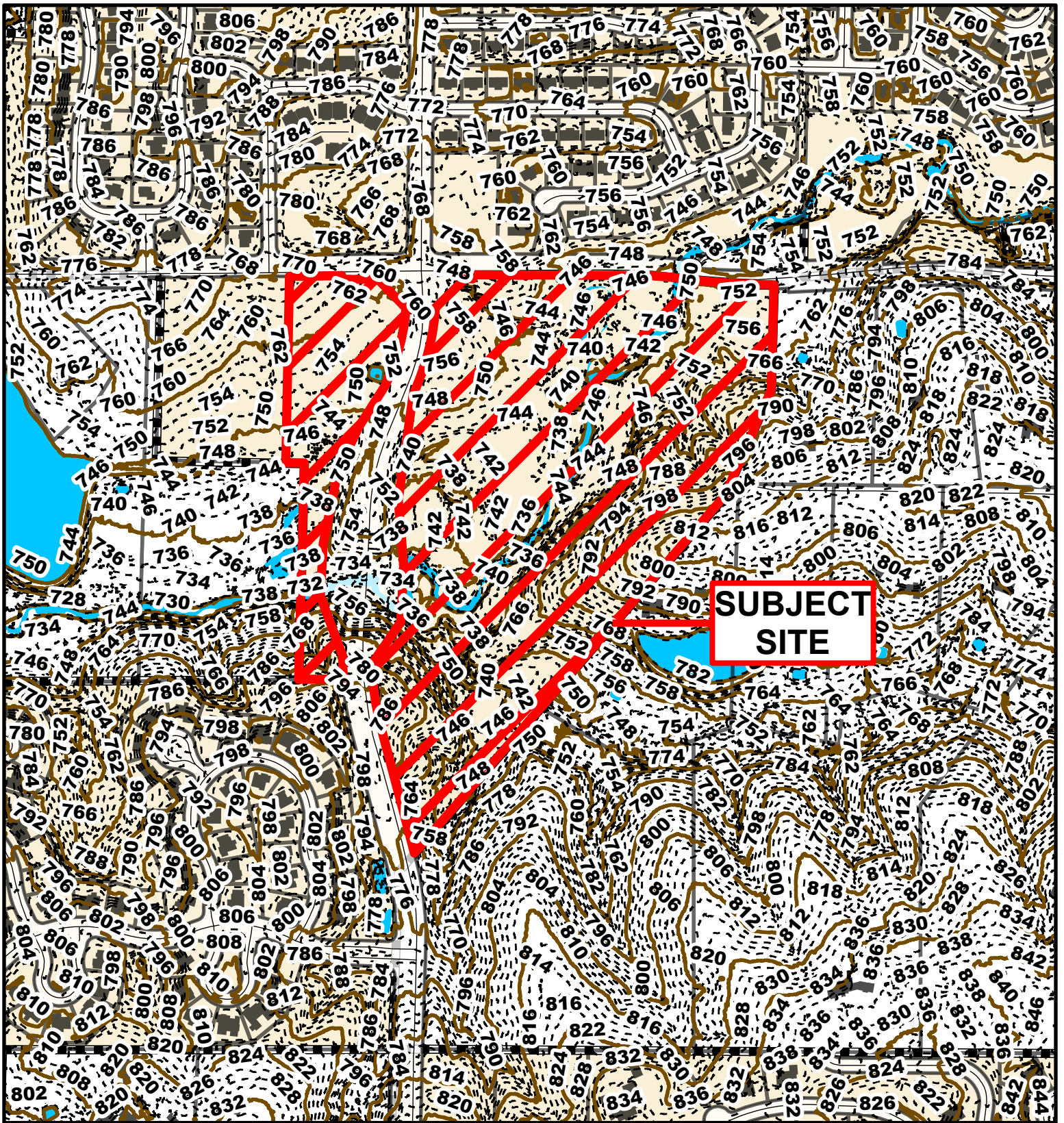


Parcel Data Source: Boone County Assessor

Created by The City of Columbia - Community Development Department

2025 Imagery: NearMap





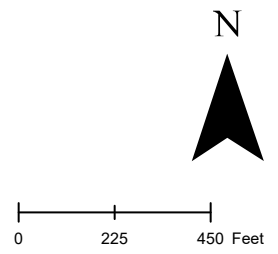
**SUBJECT
SITE**

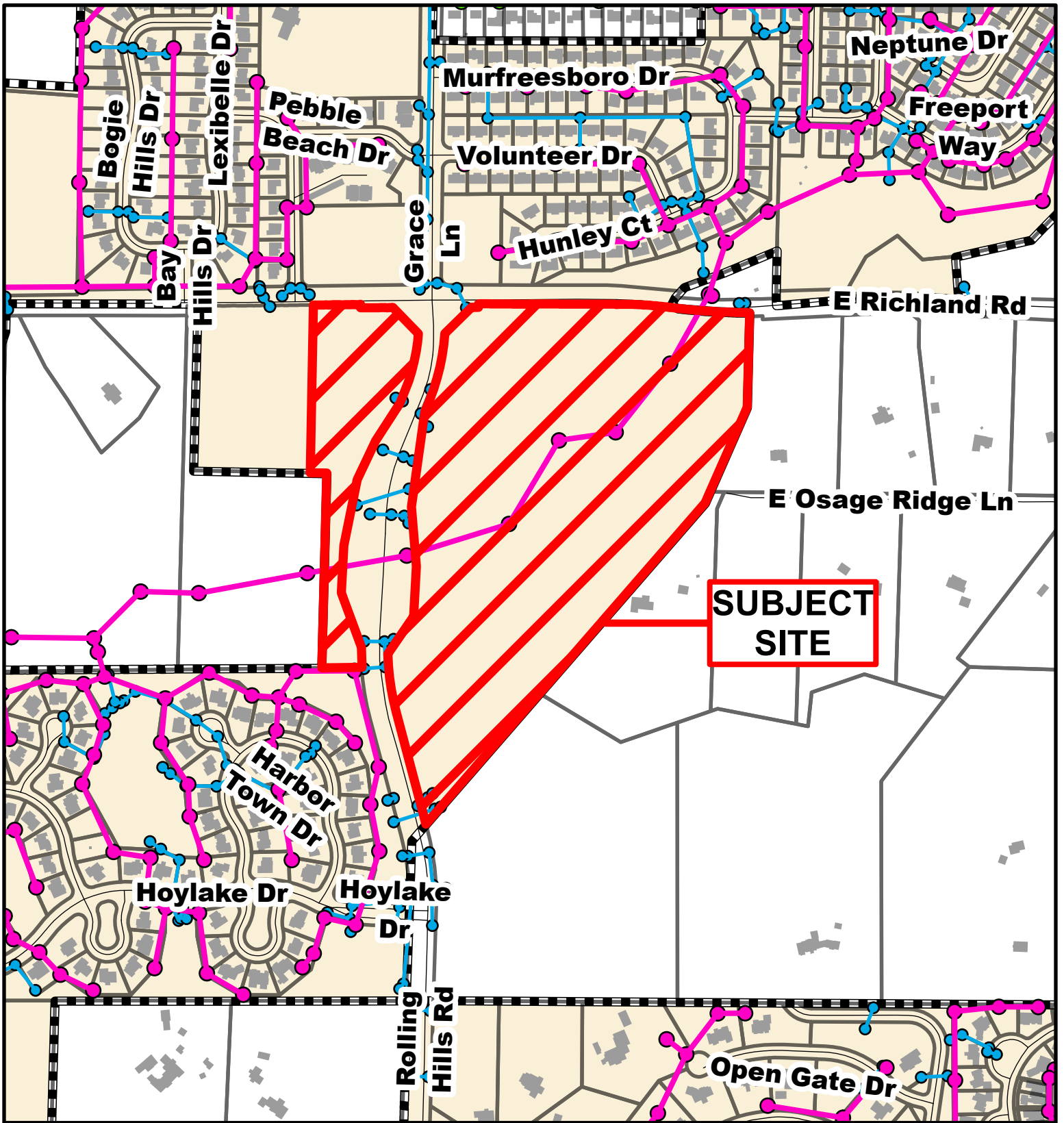
Case # 49-2026 - SE & SW corner Rolling Hills & Richland Road PD Plan and Preliminary Plat



Parcel Data Source: Boone County Assessor
Created by The City of Columbia - Community Development Department

- 10 Foot Contour Lines
- 2 Foot Contour Lines
- Columbia City Limit
- Parcels

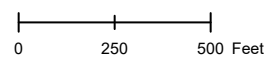




**Case # 49-2026 - SE & SW corner Rolling Hills & Richland Road
PD Plan and Preliminary Plat**



- City Sanitary Line
- City Storm Lines
- Parcels
- Columbia City Limit



49-2026
The Vantage
Rezoning and PD Plan

