

'Returning': a proposal for Columbia Regional Airport Terminal Percent for Art project
Revision 1

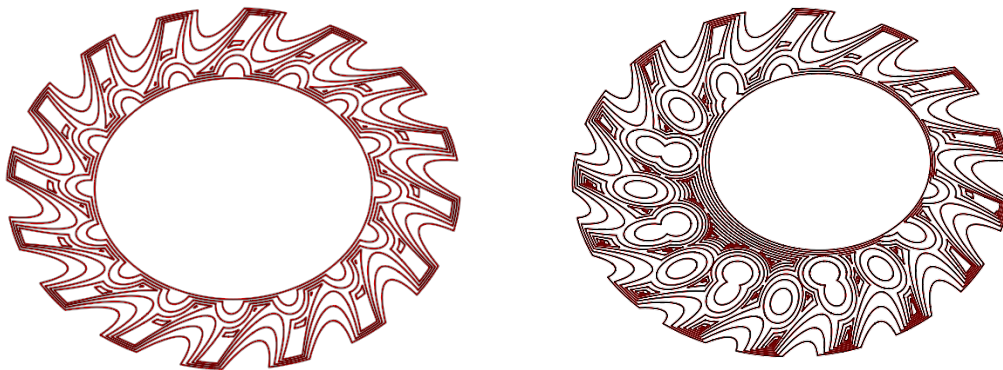
Since long before there were words to tell about it, we were wanderers. We followed the seasons and the stars, measuring time with the sun and moon.

These cycles, orbits around the earth, around the sun, continue to prompt us to wander: the summer comes and with it a vacation to some new place, or the winter comes and we long for somewhere sunnier. It's easy to forget this is a bond we share with all creatures, back into a time long before memory. The machinery of the cosmos guides us all on our journeys.

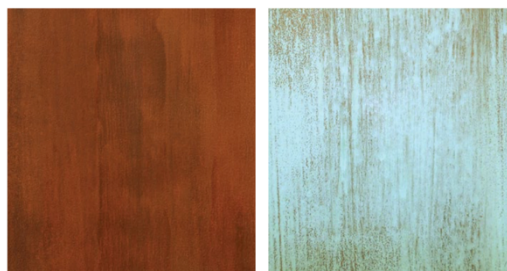
'Returning' will be a pair of large oval rings, each about five by six feet in size, with different, detailed shapes and surfaces, and contrasting colors. The complex shapes of each ring are reminiscent of planets, suns and other celestial bodies, with curved radiating extensions from a central circle. The general ring shape of each of the pieces speaks to the cyclical nature of days, seasons and years, and resonates with concepts of leaving, returning and repetition. They will have staggered surfaces, like a topographical map or wood grain. The two rings will have different metallic finishes, each with a patina to highlight the surface relief and add interest.

CONSTRUCTION

Each ring will be made from 3/8" medium-density fiberboard, layered together and glued with wood glue. The finished ring shapes will be colored with acrylic metal coatings, which will accept standard metal patinas, and each piece will have a patina applied to produce deep colors and interesting, weathered-looking surfaces. The rings will be sealed with lacquer.

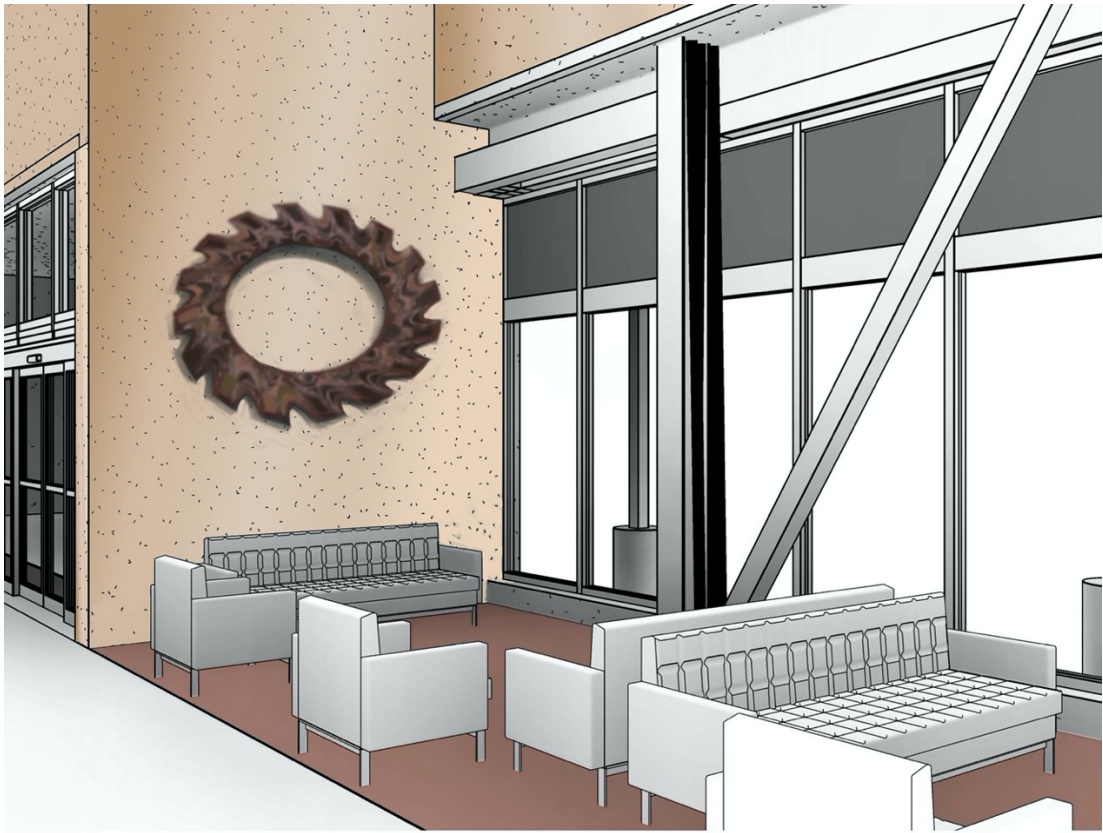
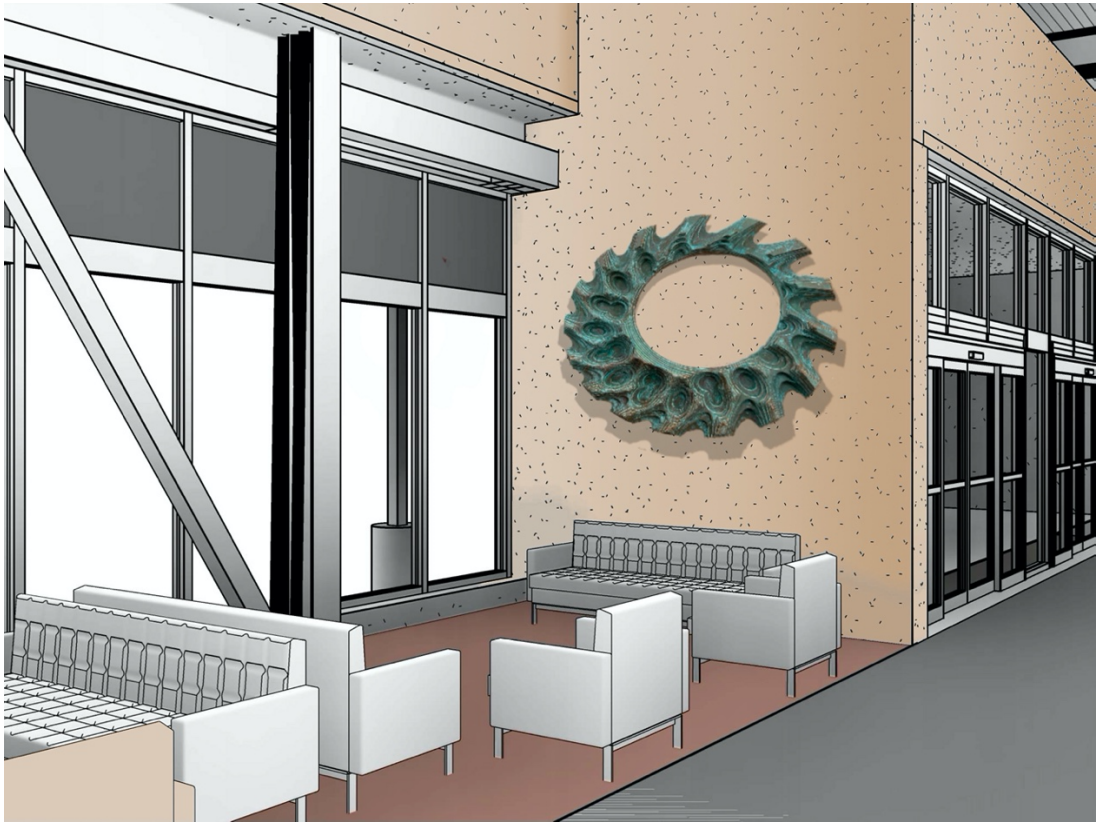


S.



Iron Paint with Rust Activator Sealed with Permacoat Xtreme

Copper Paint with Green Patina



INSTALLATION

The rings will be installed on the main entry side walls, facing into the North and South lounges. The wall will include blocking placed behind the finished drywall surface to accept and securely hold hanging hardware.

Because these walls are not in a circulation path, ADA rules may not limit the acceptable protrusion of the sculpture into the space, and no further modifications to the wall may be necessary. If modifications are necessary, the contractor will provide an inset in each side wall to accommodate the sculptures.

Each ring will weigh under 250 pounds, and they will each be mounted on a pair of metal cleats securely attached to the wall. The cleats will include a locking mechanism to prevent the work from being accidentally dislodged.

Directed lighting will be provided by the contractor, with a spot light aimed at each piece. One option is H.E. Williams VF1 series flood lights, mounted on the front wall soffits at a suitable distance and directed at the sculptures.

