

Case # 147-2021: Old Hawthorne Wellness Center Zoning Map Amendment



Created by The City of Columbia - Community Development Department

Parcel Data Source: Boone County Assessor

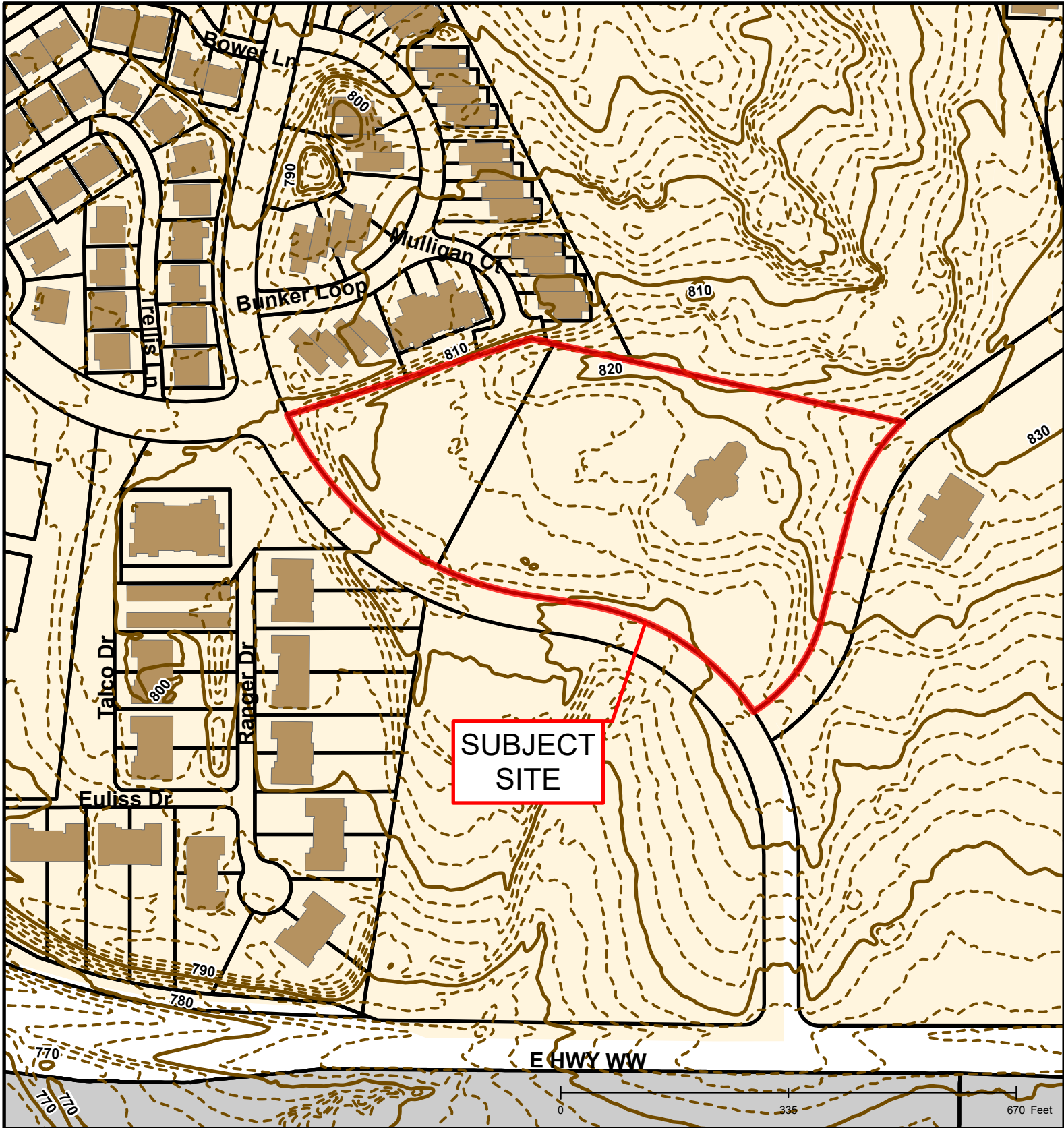
2017 Imagery: Boone County Assessor's Office

Hillshade Data: Boone County GIS



Case # 147-2021: Old Hawthorne Wellness Center Zoning Map Amendment





Case # 147-2021: Old Hawthorne Wellness Center Zoning Map Amendment



Building Footprint	Parcels	2015 Topo Lines
10 Foot Contour Lines	City Zoning	CODE
2 Foot Contour Lines	Boone County Zoning	10 Foot Contour Lines

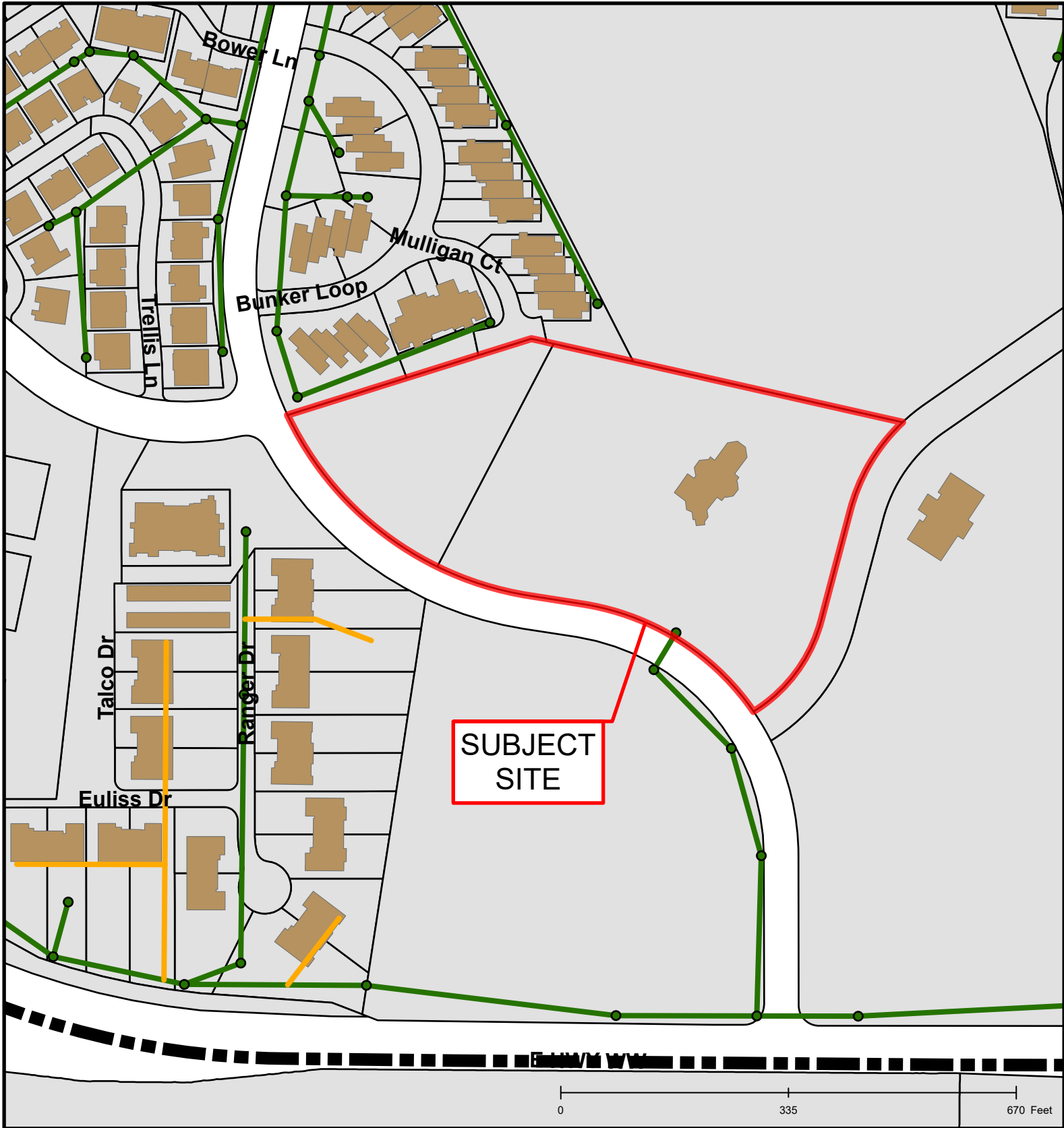


Created by The City of Columbia - Community Development Department

Parcel Data Source: Boone County Assessor

2017 Imagery: Boone County Assessor's Office

Hillshade Data: Boone County GIS



Case # 147-2021: Old Hawthorne Wellness Center Zoning Map Amendment

