



Creating Clients for Life

210 Park Avenue
Columbia, MO 65203
P 573 . 499 .1994

MISSOURI CERTIFICATE OF
AUTHORITY NO. E . 2017015086
EXPIRES: DECEMBER 31, 2021

NOTICE:
SSE waives any and all responsibility and liability for
problems which arise from failure to follow these Plans,
Specifications, and the engineering intent they convey,
or for problems which arise from failure to obtain and/or
follow the engineers guidance with respect to any errors,
omissions, inconsistencies, ambiguities, or conflicts which
are alleged.

COPYRIGHT:
Copyright and property rights in these documents are
expressly reserved by SSE. No reproductions, changes,
or copies in any manner shall be made without obtaining
prior written consent from SSE.

TS STORAGE
RV STORAGE
COLUMBIA, MO

ISSUE DATE 11/22/2021
REVISIONS

ENGINEER KKS
DRAWN BY SYL
CHECKED BY KKS
SSE PROJECT # Project Number
SHEET TITLE

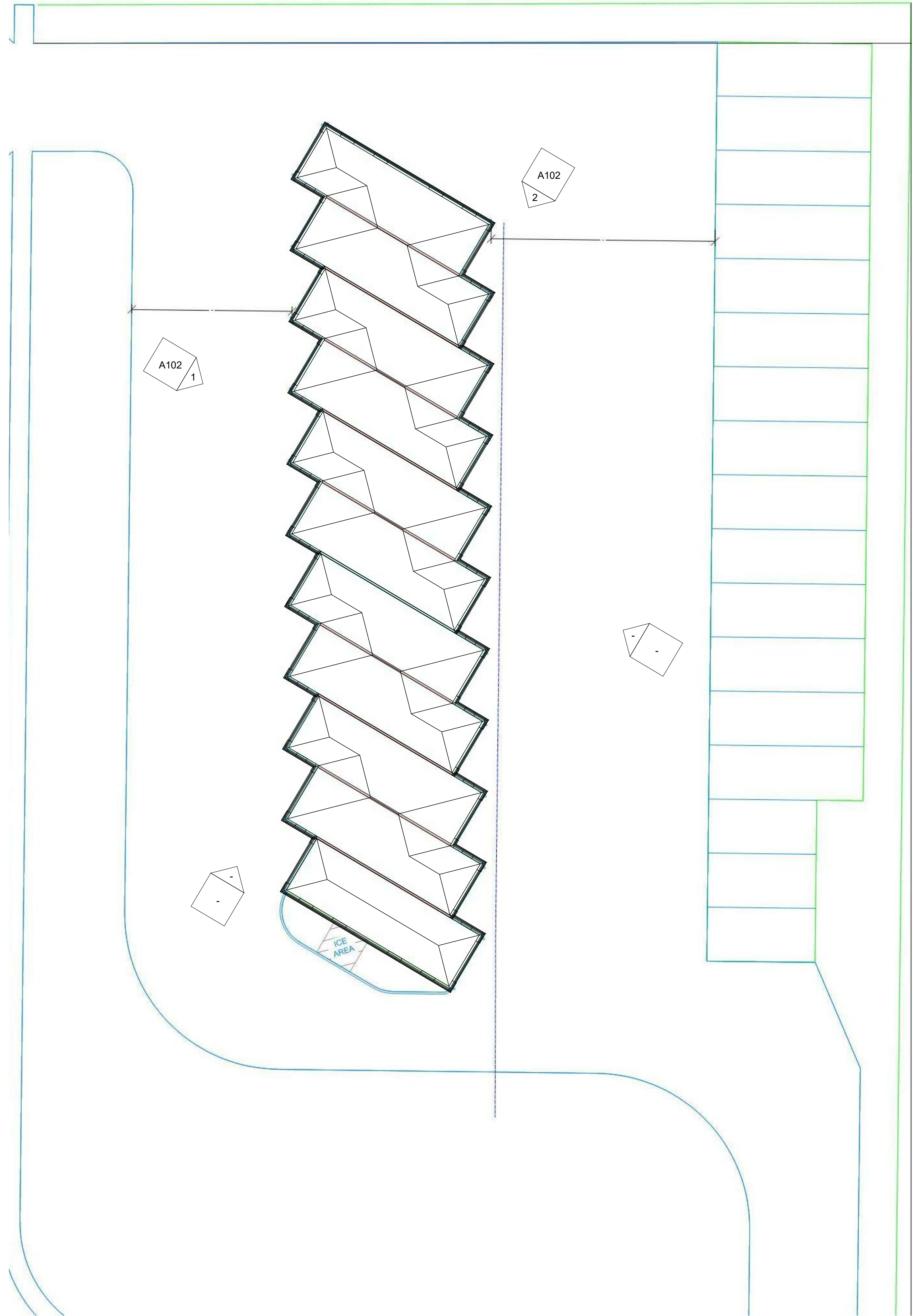
PLANS

SHEET NO.
A101

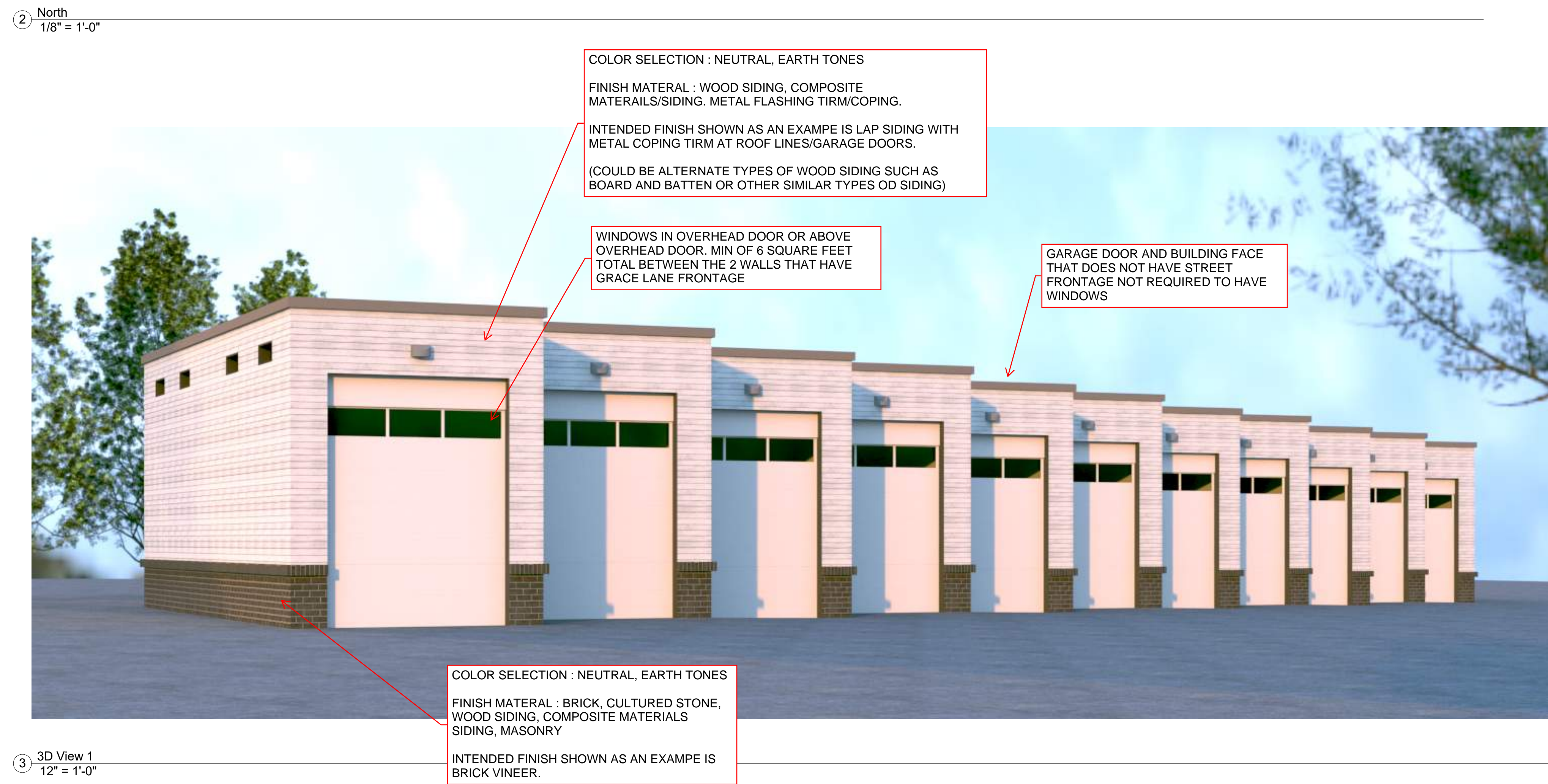
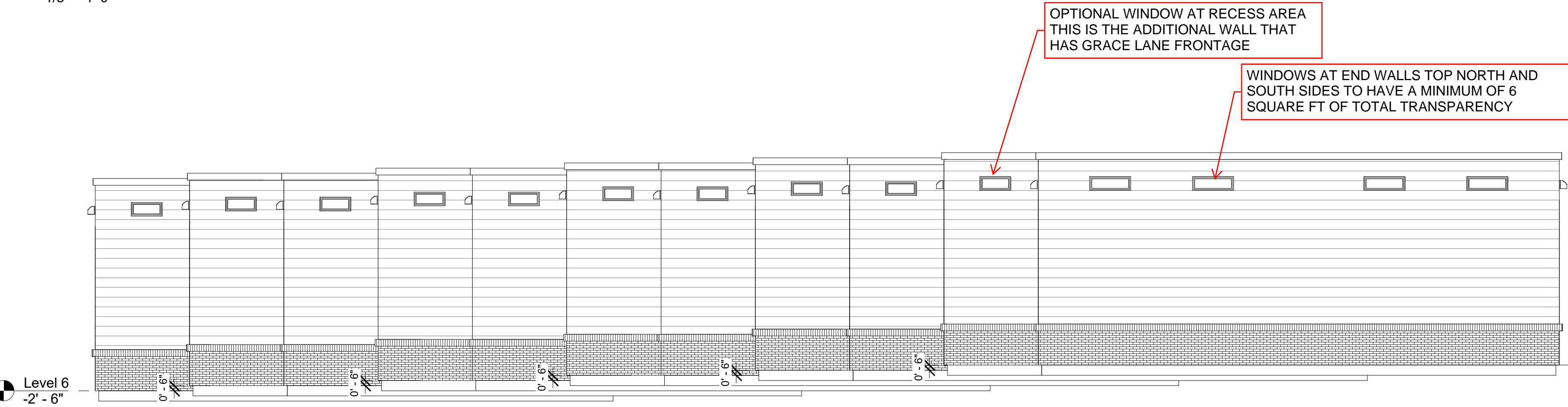
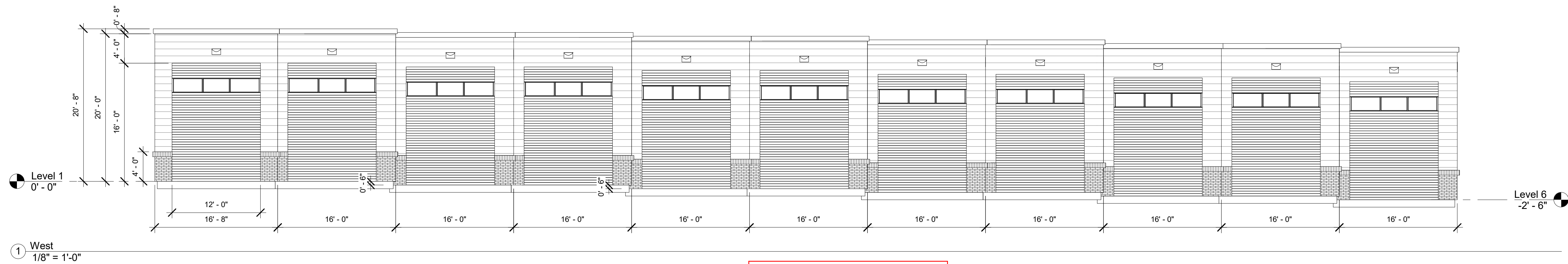
A102 1



1 Level 1
1" = 10'-0"



2 Site
1" = 20'-0"



**TS STORAGE
RV STORAGE**
COLUMBIA, MO

ISSUE DATE 11/22/2021
REVISIONS

ENGINEER KKS
DRAWN BY SYL
CHECKED BY KKS
SSE PROJECT # Project Number
SHEET TITLE

ELEVATIONS

SHEET NO.
A102