

# COLUMBIA PARKS AND RECREATION

## Public Comments for Capen Park Improvements

Meeting Held July 19, 2022

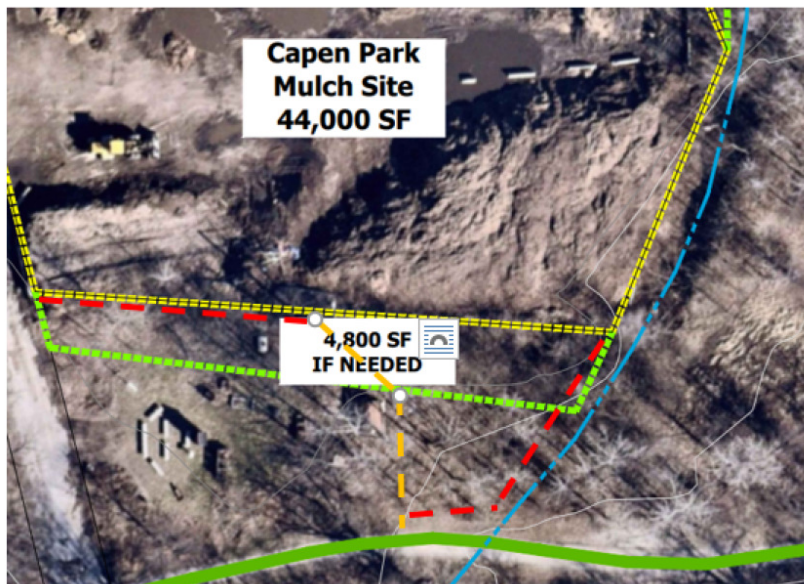
Online Comments were open from July 18, 2022 through August 5, 2022

### Please comment on what you like about the proposed potential improvements:

- Looks great. I appreciate the consideration of runoff in storm water BMP design.
- Looks great! Well thought out. ADA compliance and Handicap parking. Few trees to be taken out. Lighting and restrooms/water great idea.
- Upgrade offers a more welcoming entrance so city people will want to enter more natural areas.
- Love a little more parking and consolidated signage.
- Almost all of it. More parking, signage and accessibility are needed, and a bathroom would be very welcome.
- Utility upgrades
- Additional Parking and Bathrooms
- Additional parking, bathrooms and growth opportunities
- Expanded parking
- Increased parking which is separated from the mulch site.
- Expanding the parking lot. Getting a rest room
- Parking and storm water run off improvements.
- Permanent bathroom is a nice addition. Might suggest having a solar powered light, or composting system.
- the addition of parking lots
- Additional parking and trees
- Larger parking lot, potential bathroom, improved accessibility.
- Water quality improvement is always good, as is ADA access.
- I like the improved accessibility via ADA improvements - that's incredibly important for a portion of the population that often gets forgotten. Great work! I also love that bike racks are being added - should probably look at adding more.
- Love the additional parking and access. Really happy that no existing trails will be impacted.

**What would you change about the proposed potential improvements? Please be concise:**

- The composting demo and garden to the south is an important educational area. Please do not expand mulch site to encroach there. In addition - please feature the Wildflower garden and Composting area in the signage.
- Good morning Matt, Mike and Zach,
- I hope the Capen interested parties event went well last night. I was disappointed I couldn't not make it. The improvements are needed and will be welcomed at the site.
- I have some concerns about the 4,800 SR If needed area to the west of the yard waste site that encroaches on the Capen Park compost demonstration site, outdoor classroom and pollinator garden. I oversee management of and programming at the site. The classroom is used regularly for composting education, and also for native and pollinator education as well as an annual group maintenance project. The classroom, composting demonstration bins, pollinator garden and frog pond are a valuable asset to the park and our community.
- The proposed west boundary changes would greatly restrict the sight and negatively impact the classes and workshops at the site. A buffer is needed between the mulch site and classroom. This Saturday, July 23rd we will have a morning workshop at the site 9:00am-10:00am. You are welcome to attend and get a feel for the need for the buffer. Solid Waste will push the yard waste that morning before the workshop kicking up all kinds of dust and debris.
- If the extra space is indeed deemed necessary, is a compromise possible? I realize for the yard waste site a more open area is optimal, but would something to the effect of below be possible to preserve the outdoor classroom, compost demonstration bins and pollinator garden? A privacy fence where the orange boundary is would be needed. The east boundary we would like to continue with the development of the natural boundary. Invasives are being removed there and there are sycamore, walnut trees and a Devil's walking stick (*Aralia spinosa*) there.



- If possible, adding a water fountain, maybe near the parking lot, would be nice.
- Don't infringe on the native plant garden and trees that have been planted and maintained by Wild Ones. Provide signage for it. The compost demonstration site is also valuable. Both the native garden and the demonstration site fit with city, state and national climate goals for supporting pollinators and reducing pollution, and provide an important educational opportunity.
- Add security camera surveillance to the parking lot and add signs stating it's monitored 24/7. My last visit on 7/1/22 with a group of moms and their kids in the afternoon all enjoyed the creek and came back to the parking lot to find cars had been broken into, glass was everywhere. I don't feel safe parking there at all now and won't be going back unless safety measures are put in place.
- Please add water faucet for dogs. Mulch trails with erosion and/or little or no grass growing on them
- N/a
- Increased visitors will also lead to increased dog feces, which already has a fetid odor in the area and risks contaminating the watershed. Signage with stronger language is required to reduce feces and encourage dog leashing near the parking lot and trails to reduce human vs dog and dog vs dog conflict.
- Would love to see using the fund to just add a few more "clear" sign for off-leash space. I have been yelled by a couple of people for not keeping the leash on my dog at the "leash free area". Need a more clear "sign" , so that people that do not like dogs can chose a different route.
- I don't think the yard waste/mulch site should be shrunk. That place is overflowing in the fall.
- I think alternate access to the park should be prioritized over added parking. Maybe have bike access to nearby neighborhoods or have a bus route connect the park with nearby or lower-income neighborhoods.
- 1. Create a pervious (permeable) surface instead of using impervious materials. This will help to reduce heat (discuss this with Show-me the heat campaign organizers of the Office of Sustainability of the City of Columbia). 2. Also, I would like to leave the garden and compost area untouched. It is providing education and also habitat for wildlife. There is a lot of effort done by volunteers and it will be ashamed to destroy or disturb what is already there. Also native trees established need to be protected.
- Couple more handicapped spaces
- Extending the mulch site past the current boundary into the compost demonstration and native garden site. Much citizen effort has gone into this area. Destroying any part of it would be sad! Including the native garden site on the signage would be affirmation of this important work!
- Depending upon what will be impacted by the additional parking spaces, I would make sure to safeguard surrounding vegetation and trees. Maybe just change a couple of spots, or whatever number is needed, to ADA compatible parking?

- Why so much parking? Didn't the original plans only include re-striping the existing lots for ADA access? We have way too much parking in this city as it is - most of which isn't used and is just extra impervious surface. We should be discouraging private vehicle use if we're ever going to meet our CAAP goals (which we won't at current rates). Also was the overlook deck/shelter scrapped? I would really like to see that added back in.
- Add water access for humans and dogs. Need permanent restroom. Add trash cans within park (centrally located) to facilitate dog waste clean-up. Add dog waste bag stations within park for owners who forget.

*The above record(s) is subject to Missouri's open records laws and may be provided to the public if requested and/or placed in public domain.*

Thank you for your participation.

City of Columbia, MO

Parks and Recreation