

o:\cadd\proj\traffic\audubon - shepard traffic calming project.dwg

2011 Orthophoto Source: Boone County Assessor

No.	Date	By	Revision

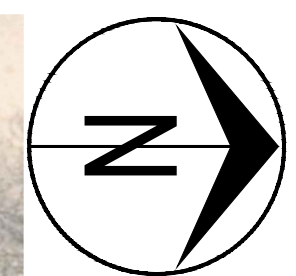
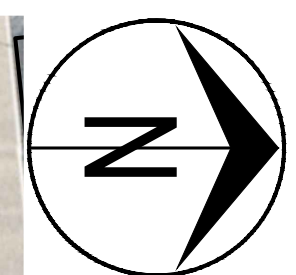
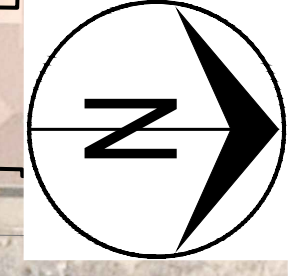
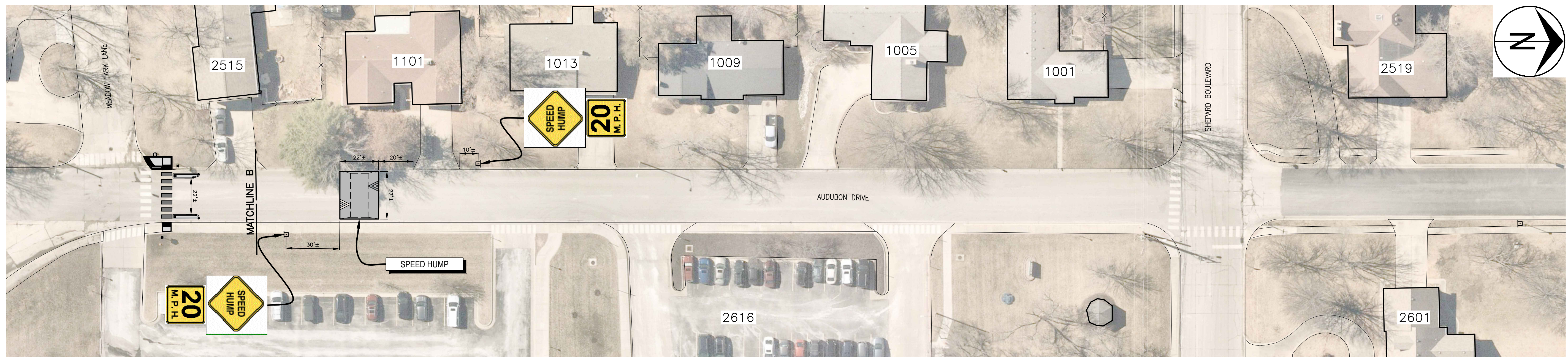
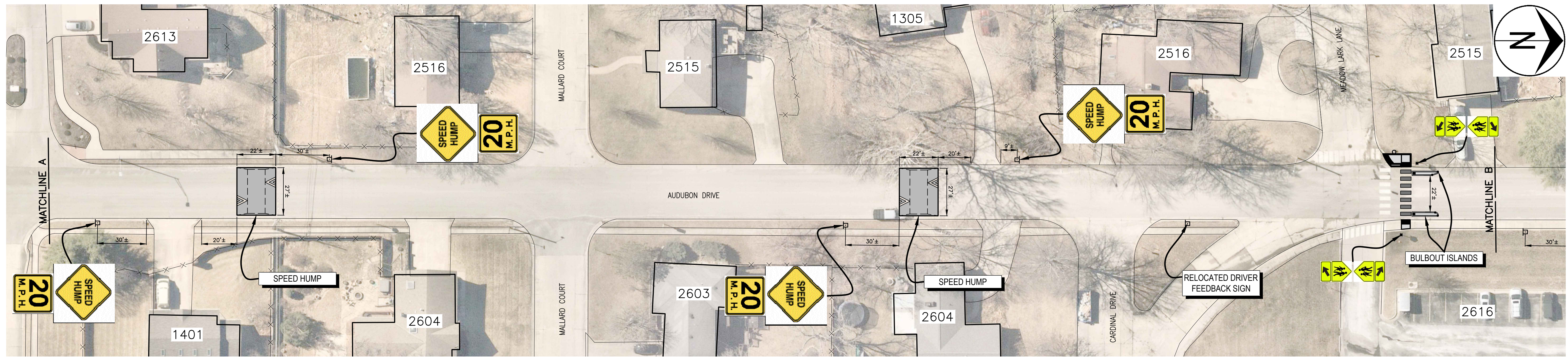
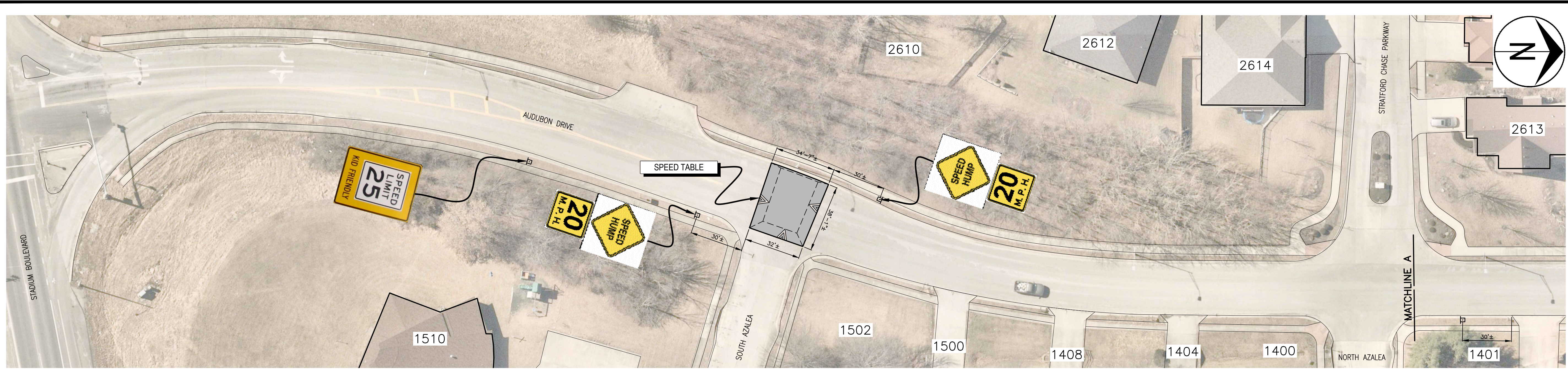
# AUDUBON DRIVE - SHEPARD BLVD TRAFFIC CALMING

Shepard Boulevard Plan

City of Columbia, Missouri  
Department of Public Works

Shane Steven Creech Registered Professional Engineer PE-2007011061
File No. _____
Scale: 1" = 30'
Date: 10/10/2022
Des. A.S.B.
Dwn. A.S.B.
Chk. J.D.R.
Sheet 1 of 6





No.	Date	By	Revision

# AUDUBON DRIVE - SHEPARD BLVD TRAFFIC CALMING

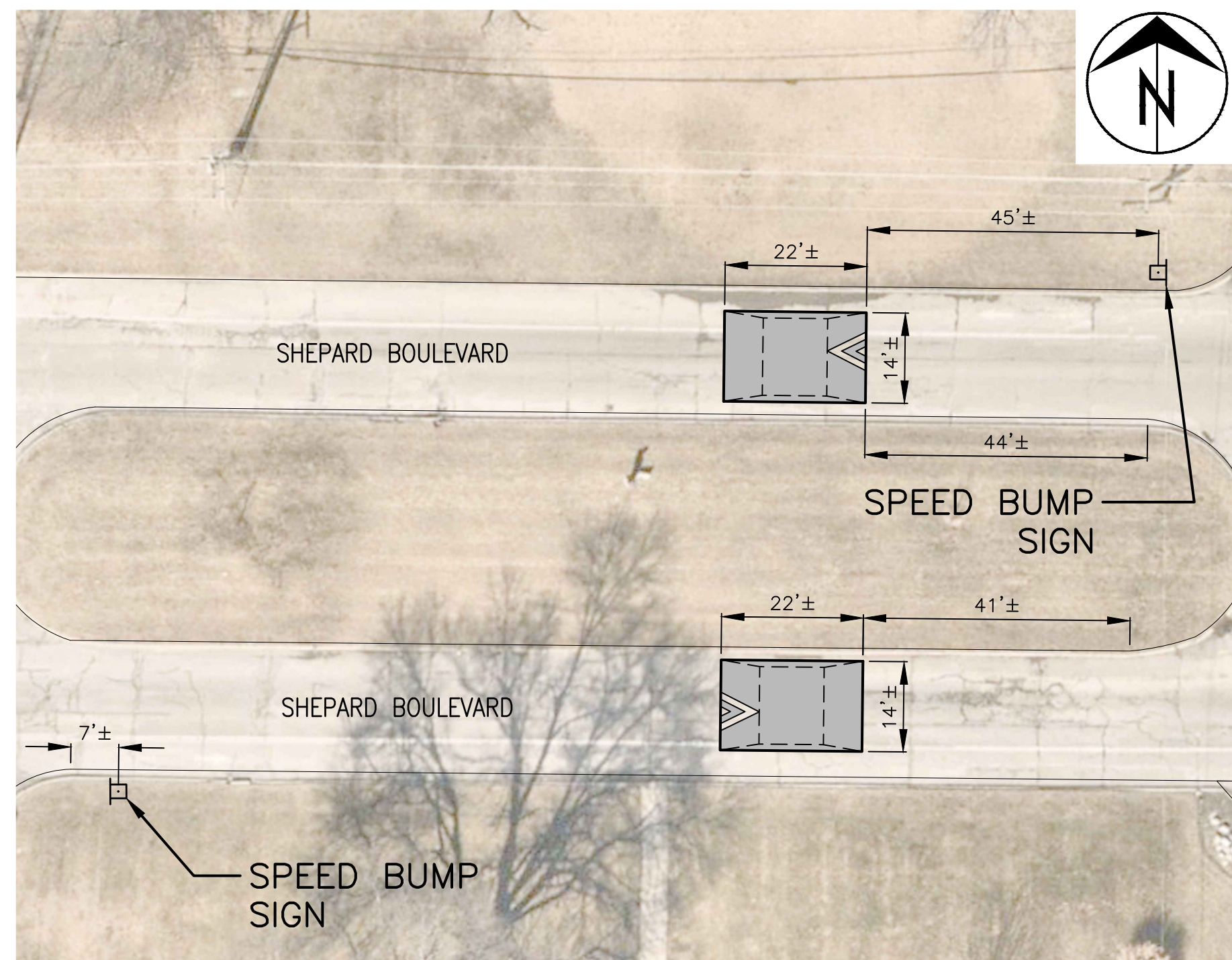
Audubon Drive Plan

City of Columbia, Missouri  
Department of Public Works

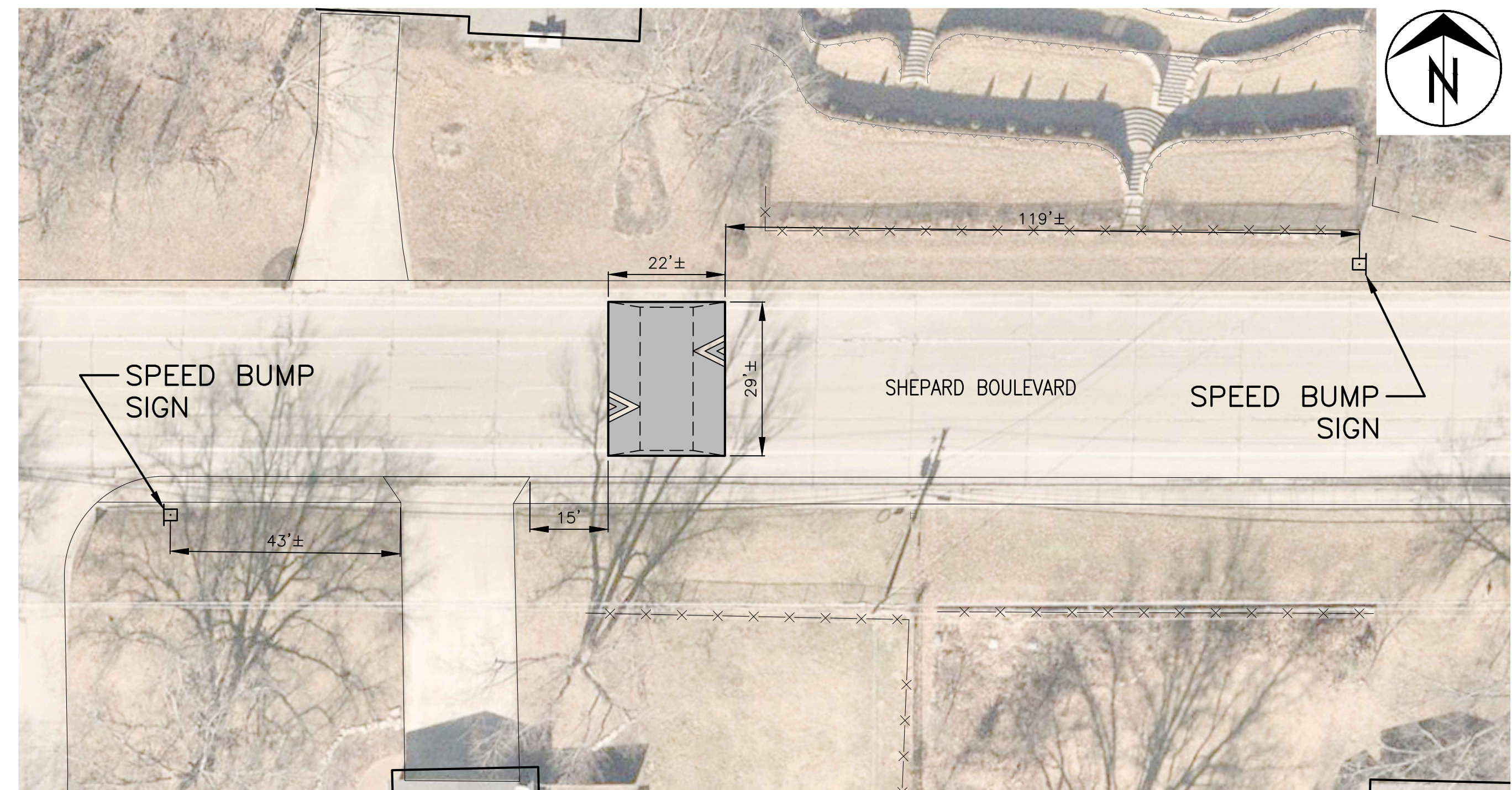
Shane Steven Creech Registered Professional Engineer PE-2007011061	
File No.	
Scale:	1" = 30'
Date:	10/10/2022
Des.	A.S.B.
Dwn.	A.S.B.
Chk.	J.D.R.
Sheet 2 of 6	

o:\caddpro\traffic\calming\audubon - shepard\audubon - shepard traffic calming project.dwg

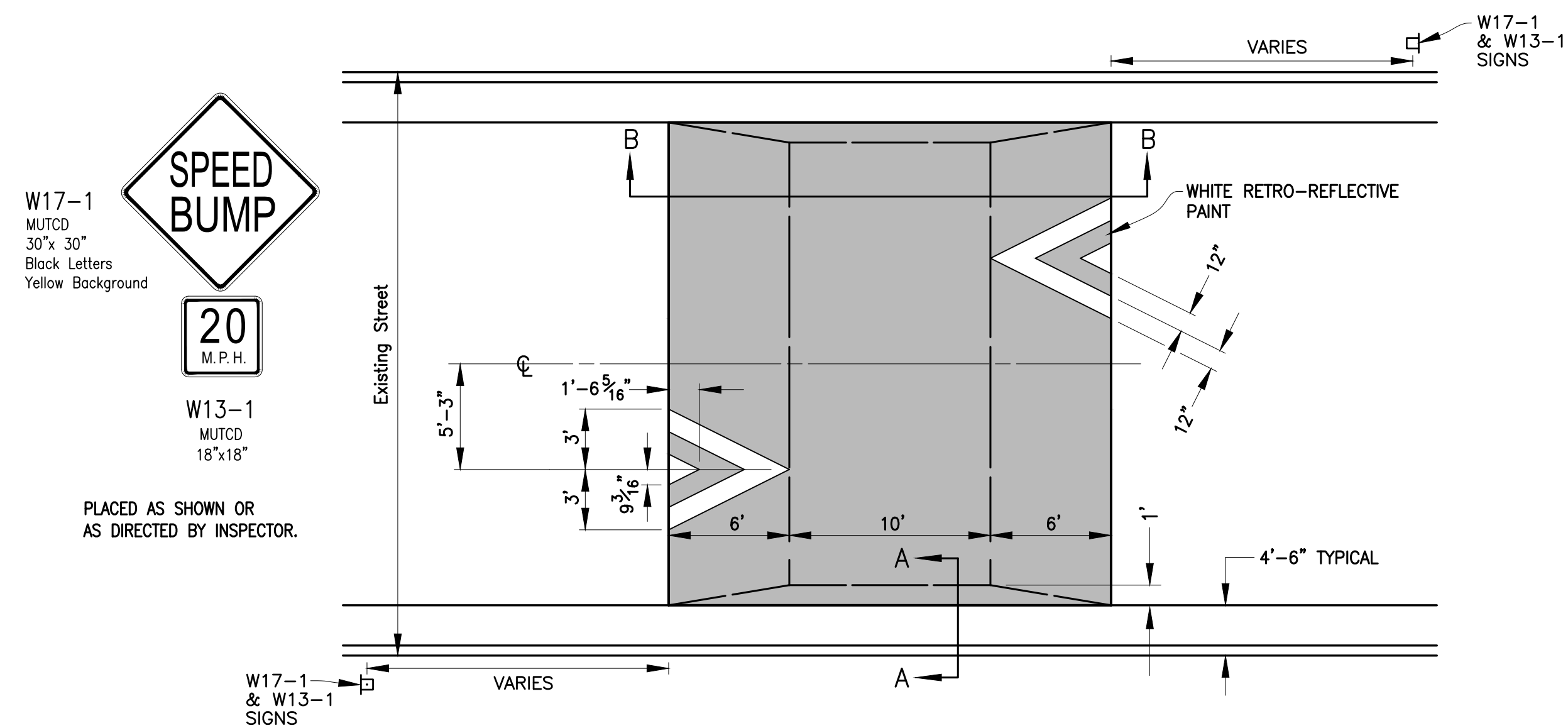




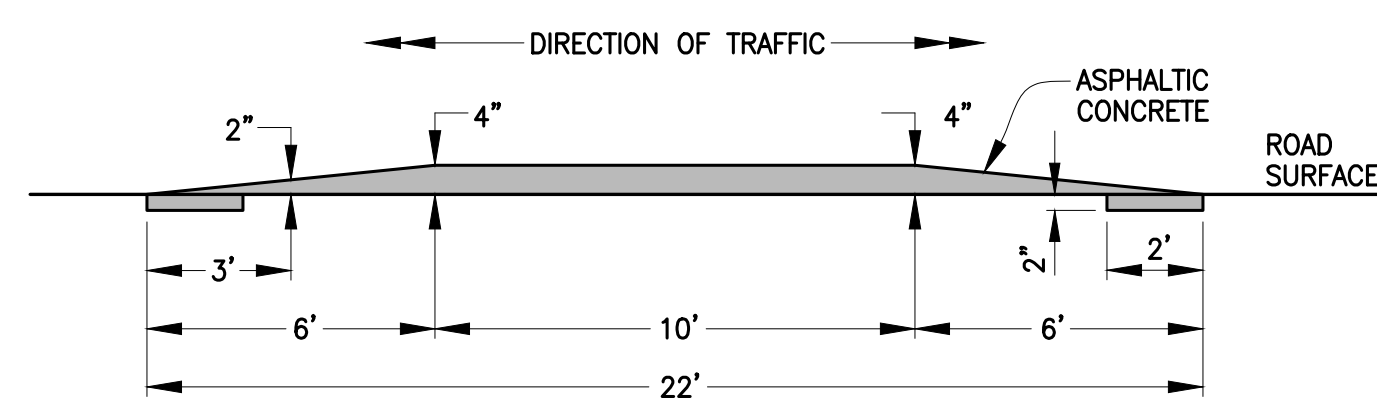
**2212 SHEPARD BOULEVARD**  
1" = 20'



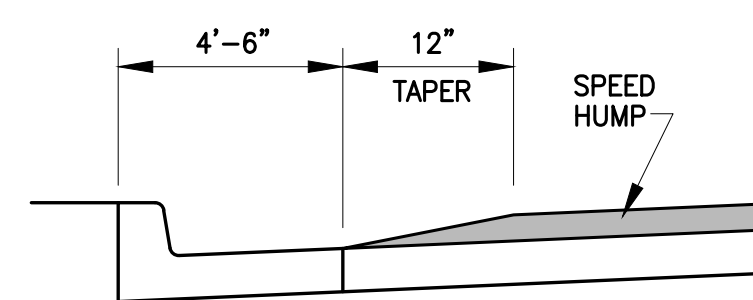
**2317 SHEPARD BOULEVARD**  
1" = 20'



**PLAN**  
NOT TO SCALE

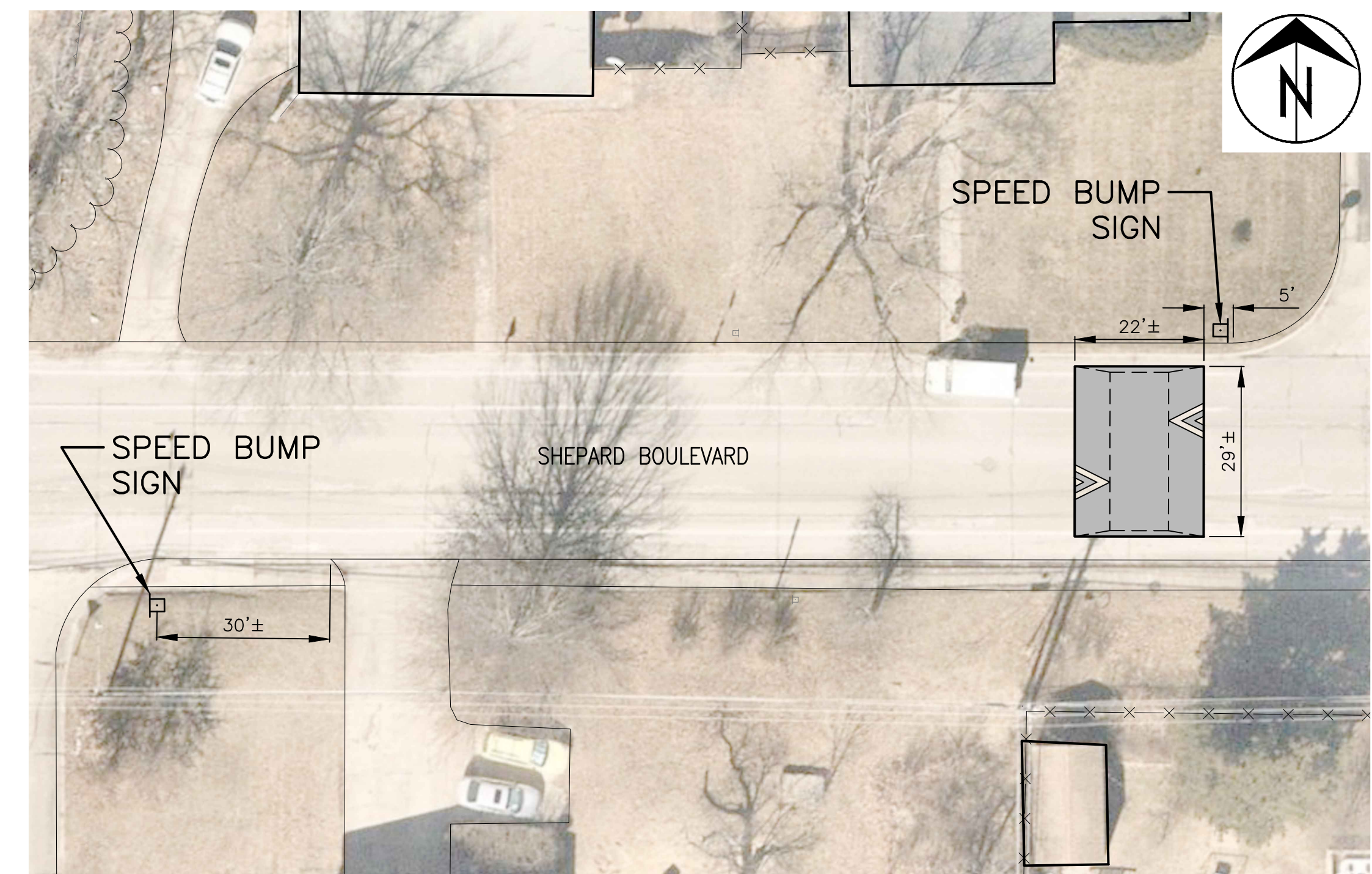


**SECTION B-B**  
NOT TO SCALE



**SECTION A-A**  
NOT TO SCALE

**SPEED HUMP**



**2411 SHEPARD BOULEVARD**  
1" = 20'

Revision	By	Date	No.

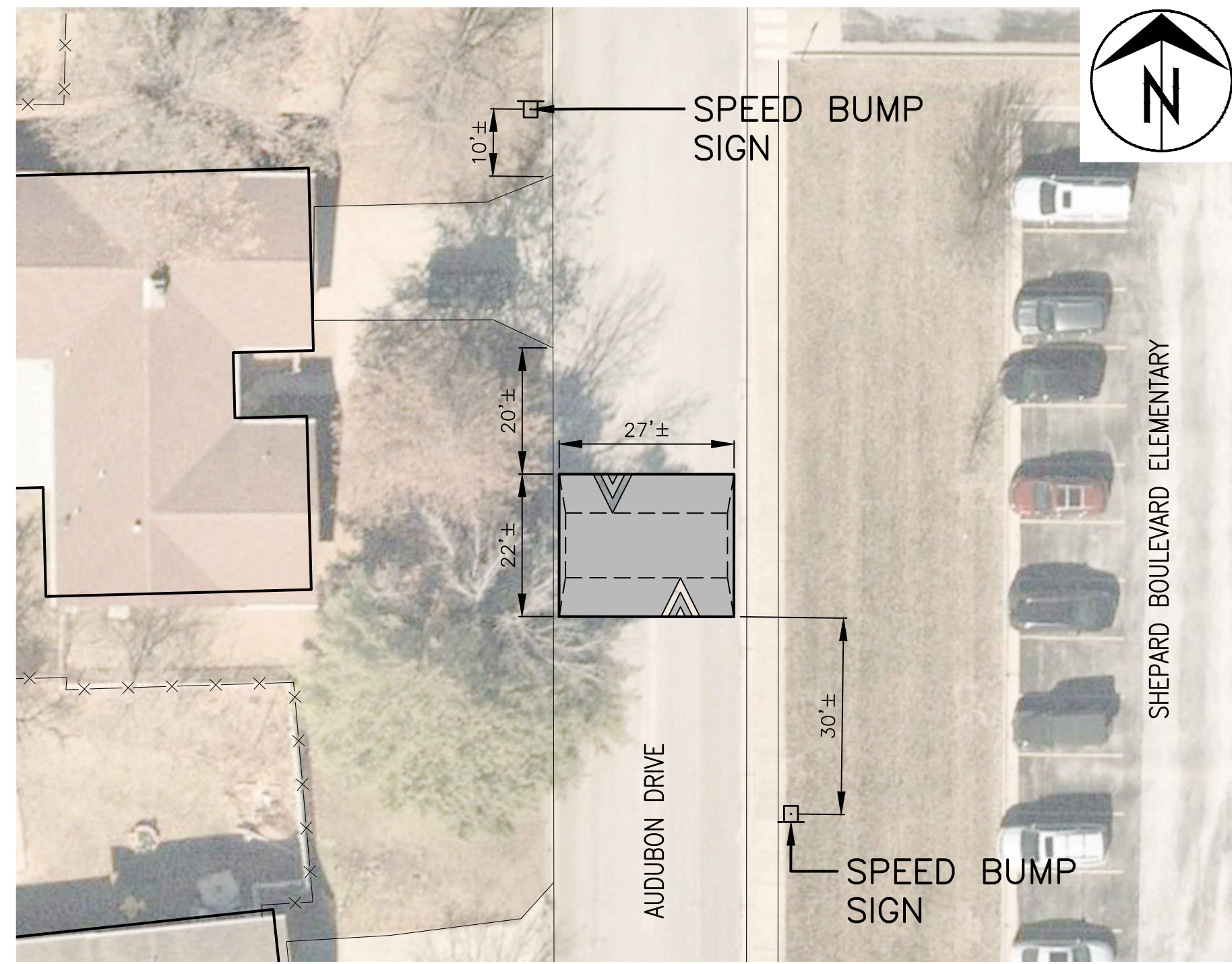
**AUDUBON DRIVE - SHEPARD BLVD**  
**TRAFFIC CALMING**  
Shepard Boulevard Speed Humps

City of Columbia, Missouri  
Department of Public Works

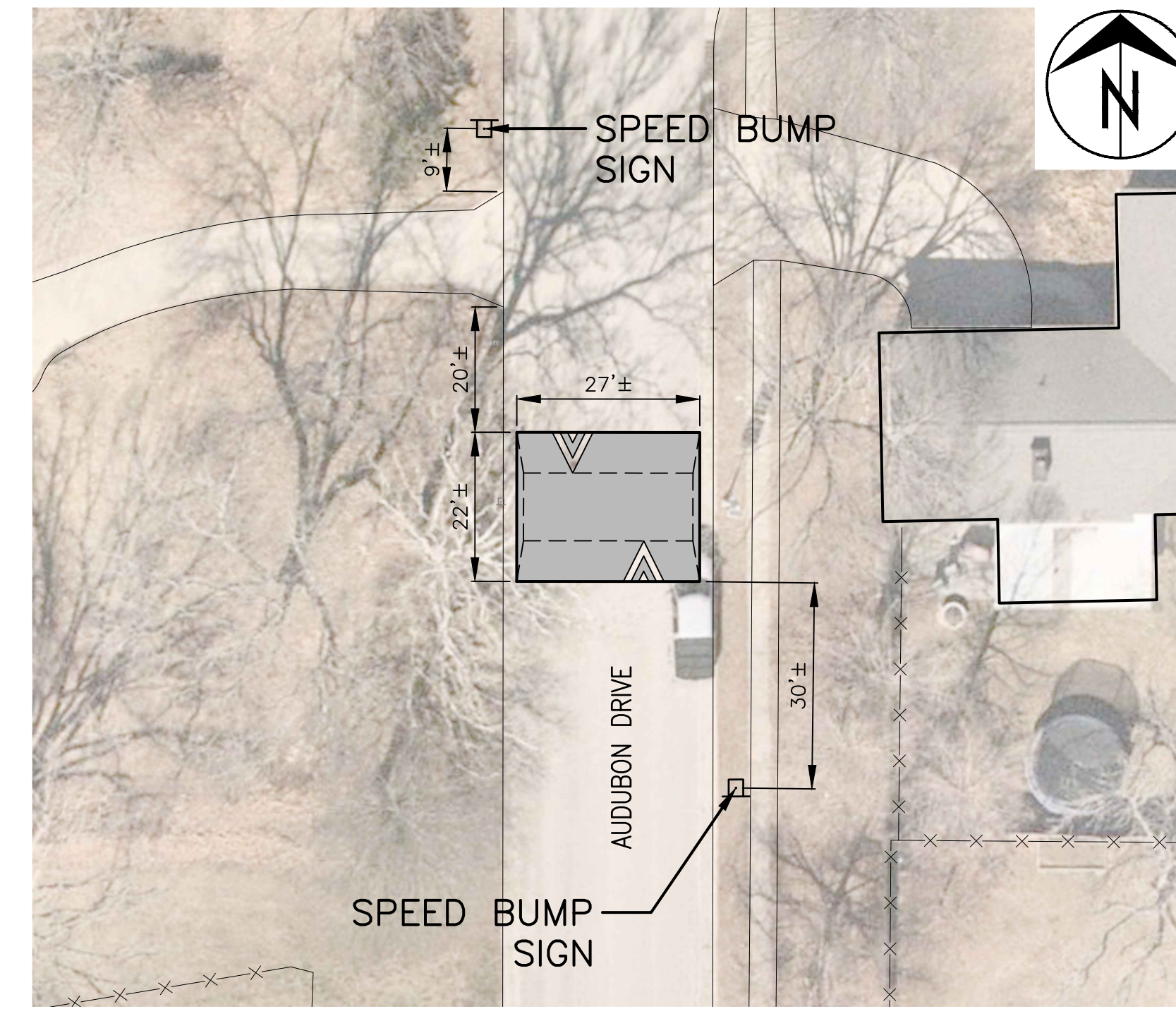
Shane Steven Creech  
Registered Professional Engineer  
PE-2007011061

File No. .  
Scale: As Shown  
Date: 6/6/2022  
Des. A.S.B.  
Dwn. D.G.W.  
Chk. J.D.R.

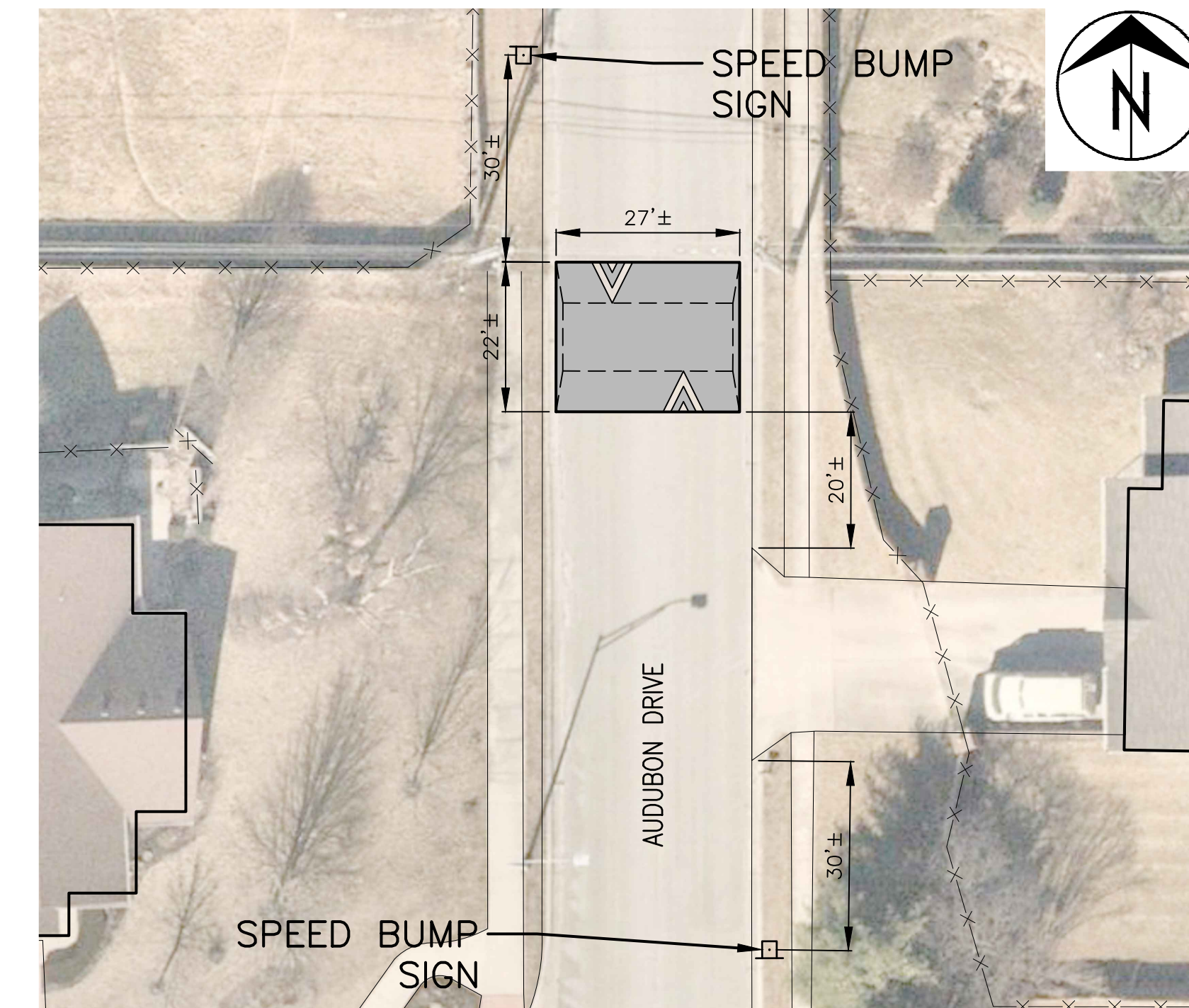
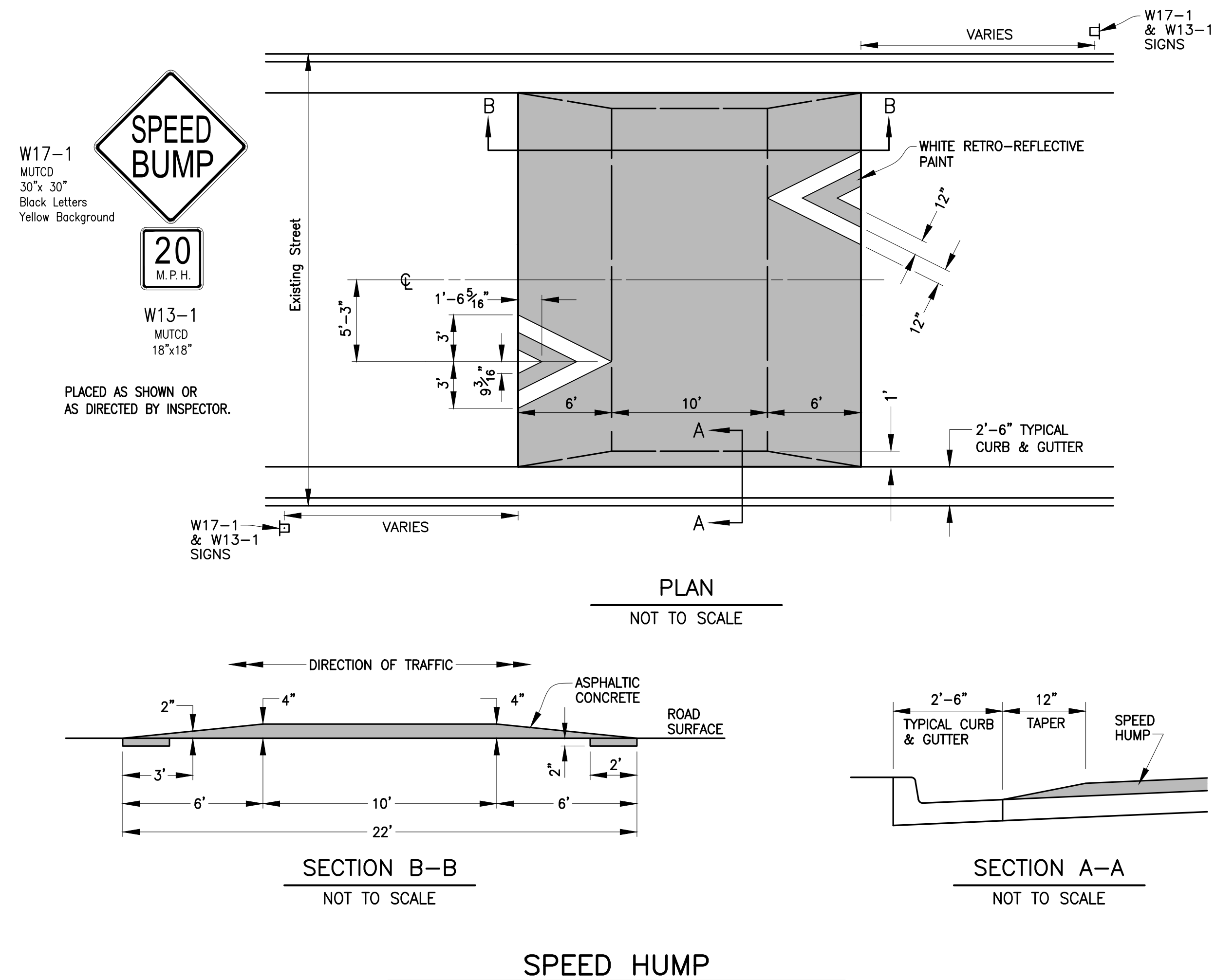




**1101 AUDUBON DRIVE**  
1" = 20'



**1305 AUDUBON DRIVE**  
1" = 20'



**1401 NORTH AZALEA**  
1" = 20'

No.	Date	By	Revision

**AUDUBON DRIVE - SHEPARD BLVD**  
**TRAFFIC CALMING**  
Audubon Drive Speed Humps

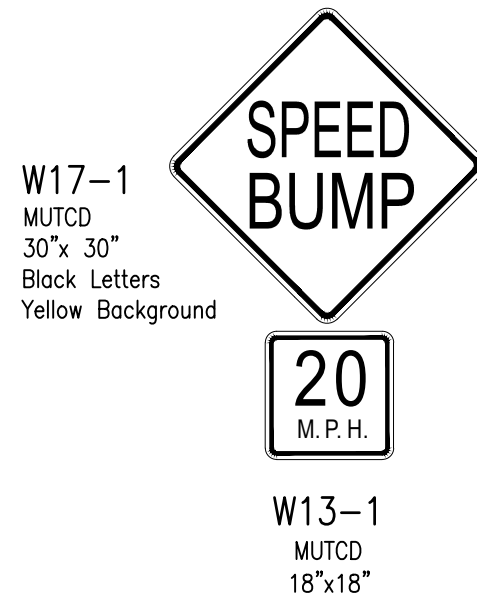
City of Columbia, Missouri  
Department of Public Works

Shane Steven Creech  
Registered Professional  
Engineer  
PE-2007011061

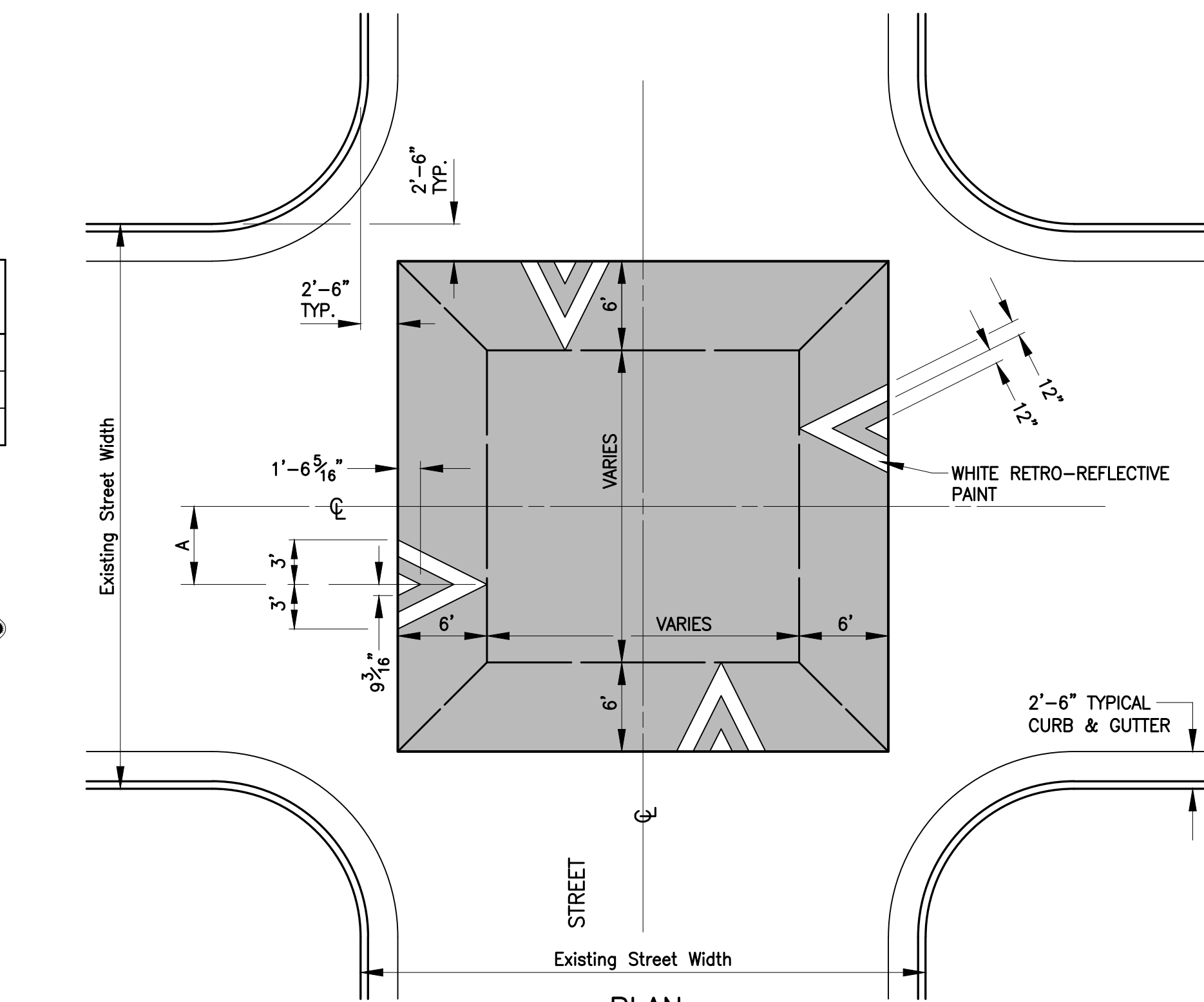
File No. .  
Scale: As Shown  
Date: 10/10/2022  
Des. A.S.B.  
Dwn. D.G.W.  
Chk. J.D.R.



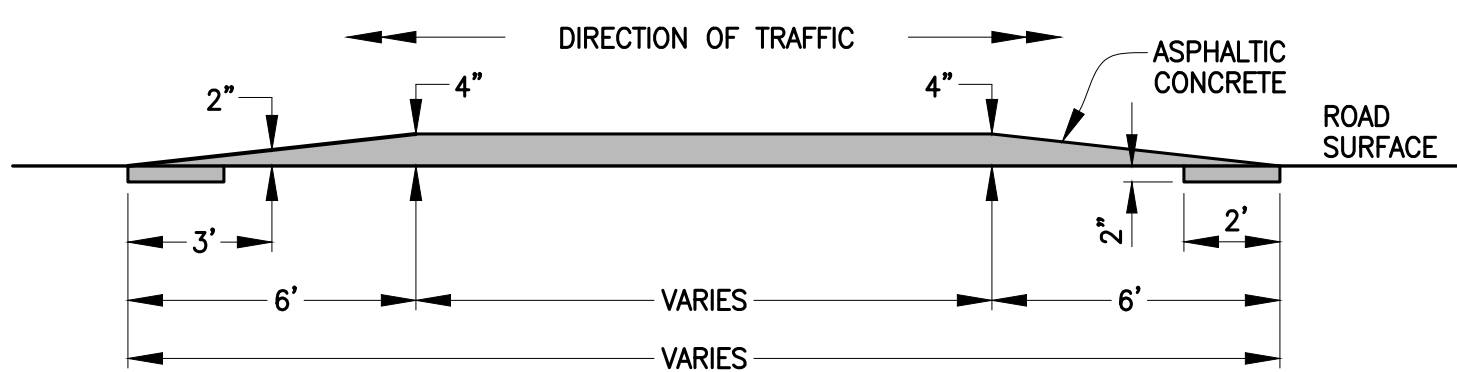
Existing Street Width (Back of Curb to Back of Curb)	A
38' & wider	5'-3"
between 32' & 38'	3'-9"
32' & narrower	3'-2"



PLACED APPROX. 30'  
BEFORE TABLE OR AS  
DIRECTED BY INSPECTOR.

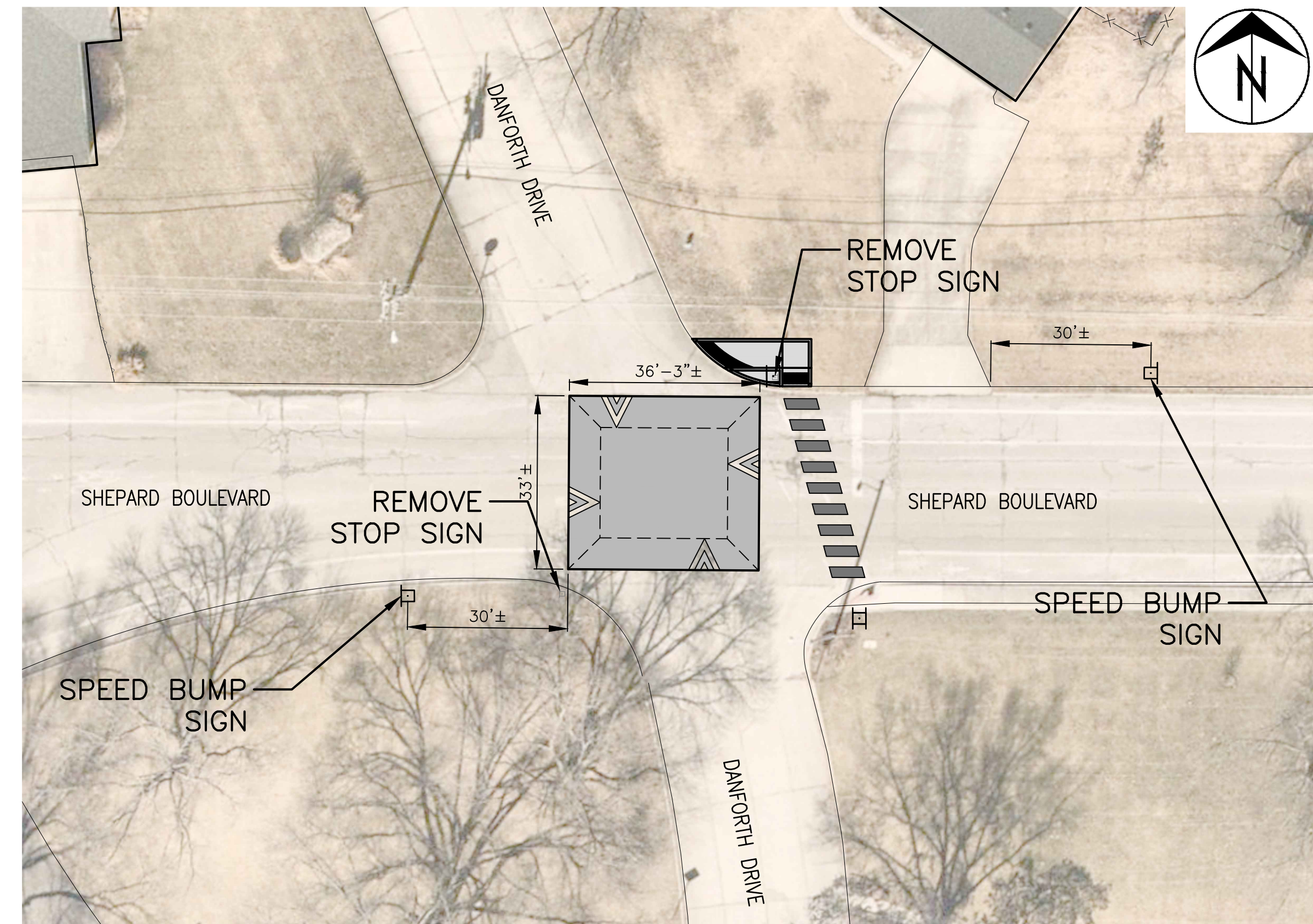


PLAN  
NOT TO SCALE

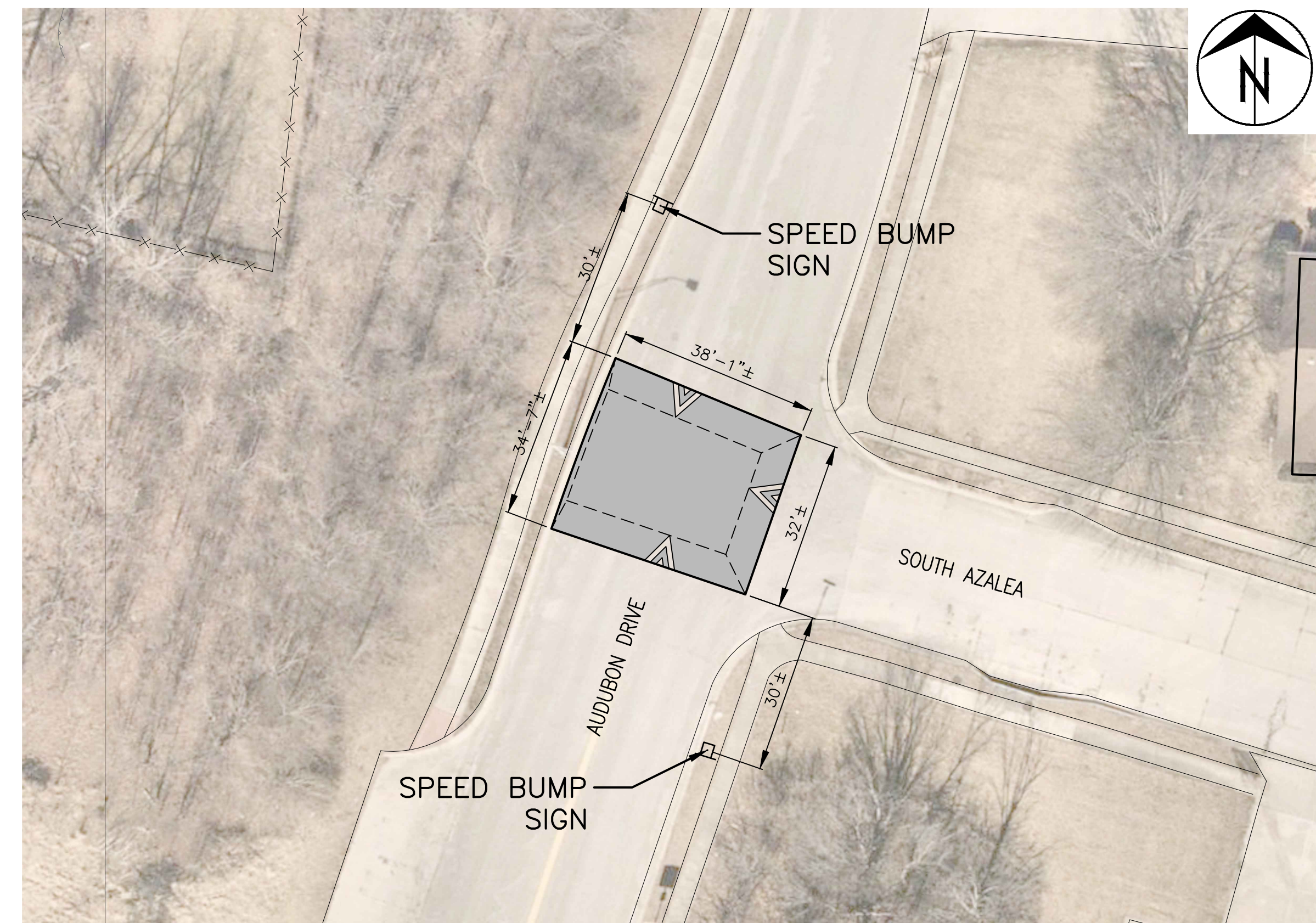


PROFILE  
NOT TO SCALE

SPEED TABLE



SHEPARD BOULEVARD & DANFORTH DRIVE  
1" = 20'



AUDUBON DRIVE & SOUTH AZALEA  
1" = 20'

Revision	By	Date	No.

AUDUBON DRIVE - SHEPARD BLVD  
TRAFFIC CALMING  
Speed Tables

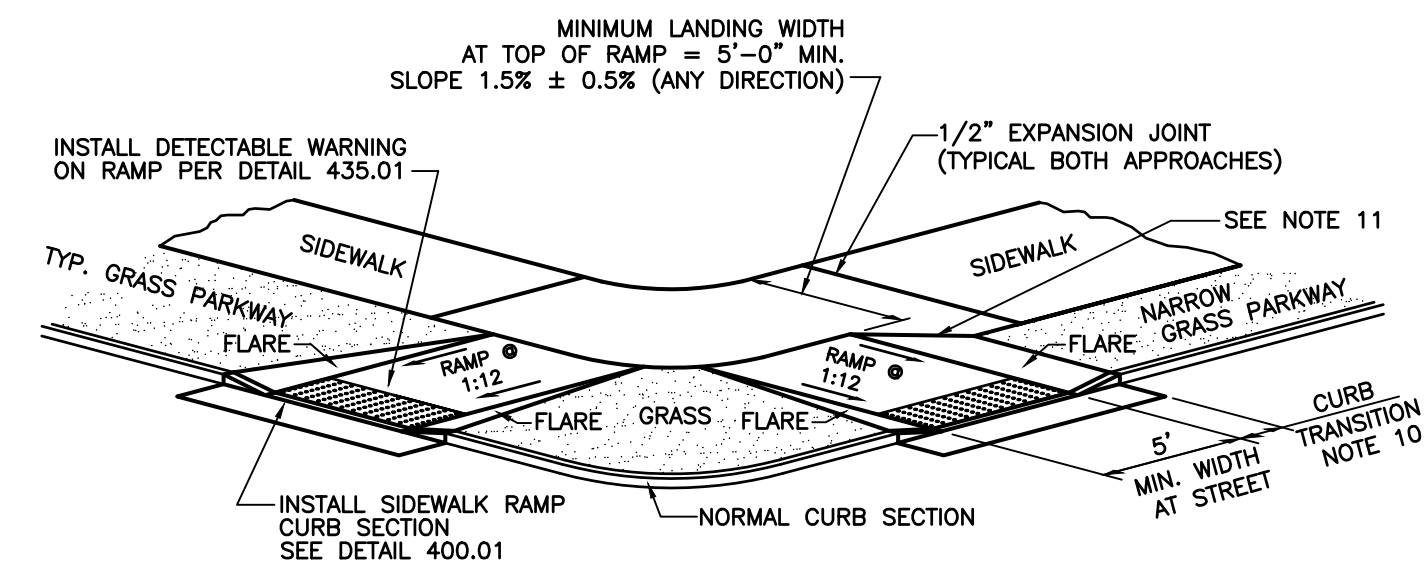
City of Columbia, Missouri

Department of Public Works

Shane Steven Creech  
Registered Professional  
Engineer  
PE-2007011061

File No.	.
Scale:	As Shown
Date:	6/6/2022
Des.	A.S.B.
Dwn.	D.G.W.
Chk.	J.D.R.

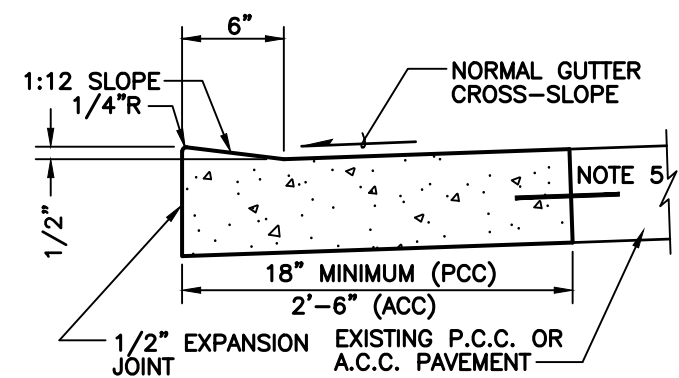




**SIDEWALK RAMP (430.01)**  
NOT TO SCALE

**NOTE:**

- RAMP SHALL BE 6" THICK MODOT PAVEMENT CONCRETE WITH #4 BARS @ 12" O.C. EACH WAY.
- EXPANSION JOINT SHALL BE 1/2" PREFORMED CORK OR BITUMINOUS EXPANSION JOINT MATERIAL.
- MAXIMUM RAMP CROSS SLOPE IS 2.00%.
- ALL SLOPES ARE MEASURED FROM THE HORIZONTAL.
- REPLACE STANDARD CURB SECTION WITH SIDEWALK RAMP CURB SECTION - DETAIL 400.01
- RAMP LENGTH IS DEPENDENT ON 1:12 MAX. SLOPE. USE FLATTER WHEN POSSIBLE.
- LANDING AREA AT TOP OF RAMP SHALL BE 4'-0" MIN WIDTH, CROSS SLOPE OF LANDING SHALL NOT EXCEED 2.00%, INCREASE SIDEWALK RADIUS TO OBTAIN MINIMUM 4'-0" LANDING.
- TYPE "A" RAMP NOT APPLICABLE IF SIDEWALK AND PARKWAY WIDTH DOES NOT PROVIDE 4'-0" LANDING AT TOP OF RAMP.
- FLARES ARE REQUIRED AT RAMPS TO KEEP GRASS PARKWAY SLOPES IN CONFORMANCE WITH THE TYPICAL CROSS SECTION.
- CURB TRANSITION LENGTH IS DEPENDENT ON FLARE SLOPE.
- IF RAMP EXTENDS INTO NORMAL SIDEWALK, FLARE SLOPE MUST NOT EXCEED 1:10. A LANDING IS REQUIRED, SEE NOTE 7.



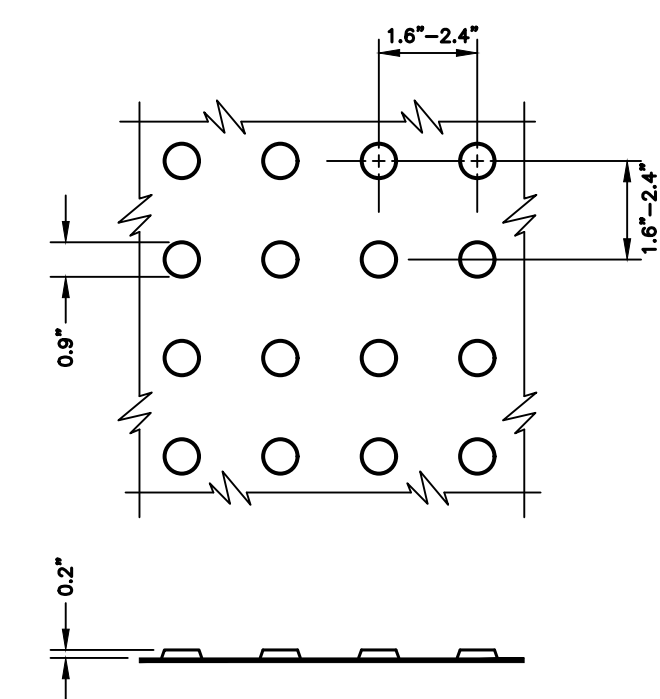
**SIDEWALK RAMP CURB (400.01)**  
NOT TO SCALE

**PCC PAVEMENT NOTES:**

- CONCRETE SHALL BE MODOT PAVEMENT CONCRETE.
- PAVEMENT THICKNESS SHALL MATCH EXISTING. BASE SHALL MATCH EXISTING.
- EXPANSION JOINTS AND CONTRACTION JOINTS SHALL BE PLACED AT LOCATIONS SIMILAR TO THE PAVEMENT WHICH WAS REMOVED.
- CURB EDGE SHALL BE TOOLED WITH 1/4" RADIUS
- WHERE EXISTING PAVEMENT IS P.C.C., LOW CURB REPLACEMENT SHALL BE DOWELED INTO EXISTING. 12" LONG #4 BARS AT 24" CTR. ALL DRILLED DOWEL BARS SHALL BE EXPOXIED.

**ACC PAVEMENT NOTES:**

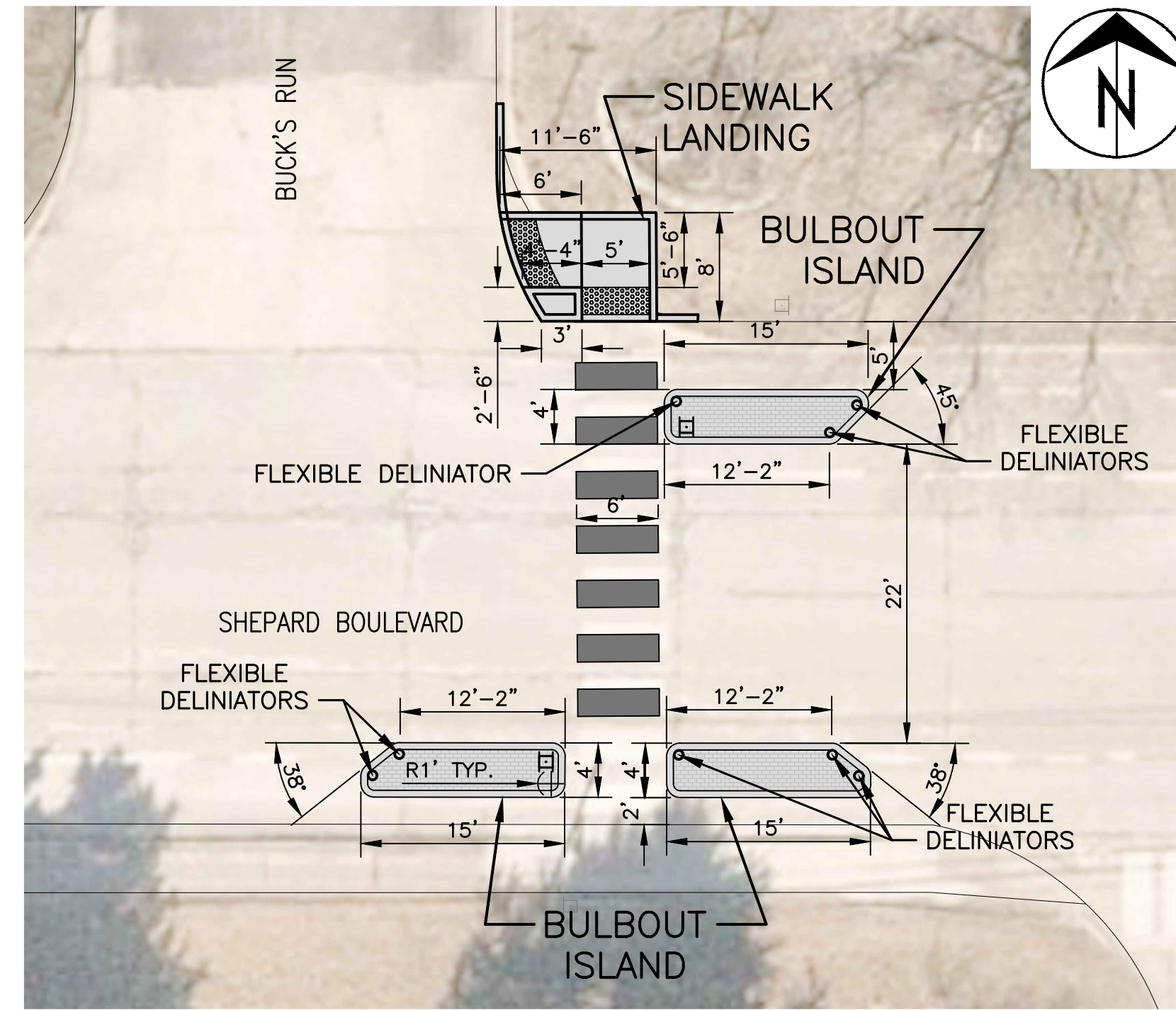
- CONCRETE SHALL BE MODOT PAVEMENT CONCRETE.
- GUTTER THICKNESS SHALL MATCH EXISTING. BASE SHALL MATCH EXISTING.
- EXPANSION JOINTS AND CONTRACTION JOINTS SHALL BE PLACED AT LOCATIONS SIMILAR TO THE CURB AND GUTTER WHICH WAS REMOVED.
- CURB EDGE SHALL BE TOOLED WITH 1/4" RADIUS



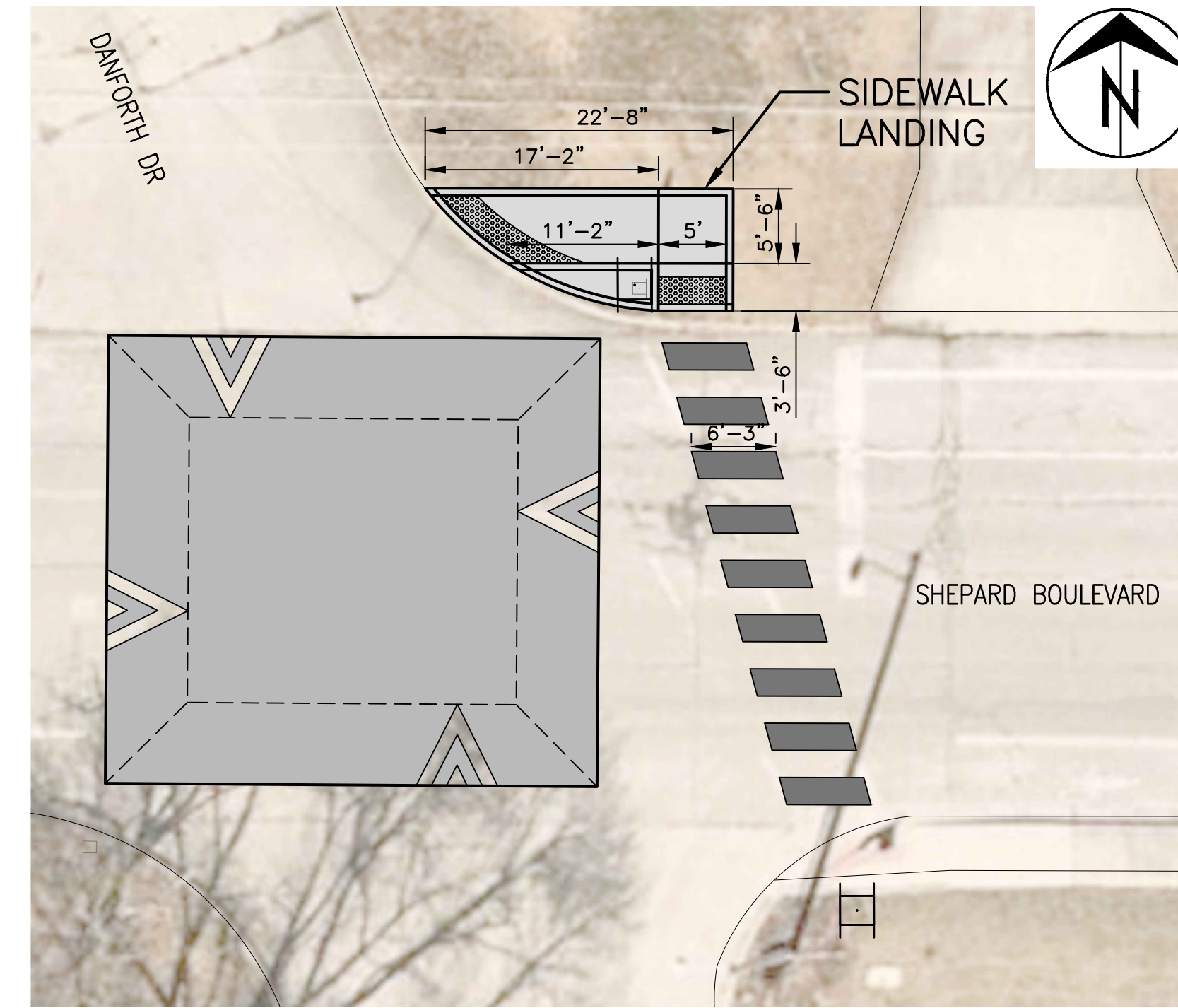
**DETECTABLE WARNING (435.01)**  
NOT TO SCALE

**NOTE:**

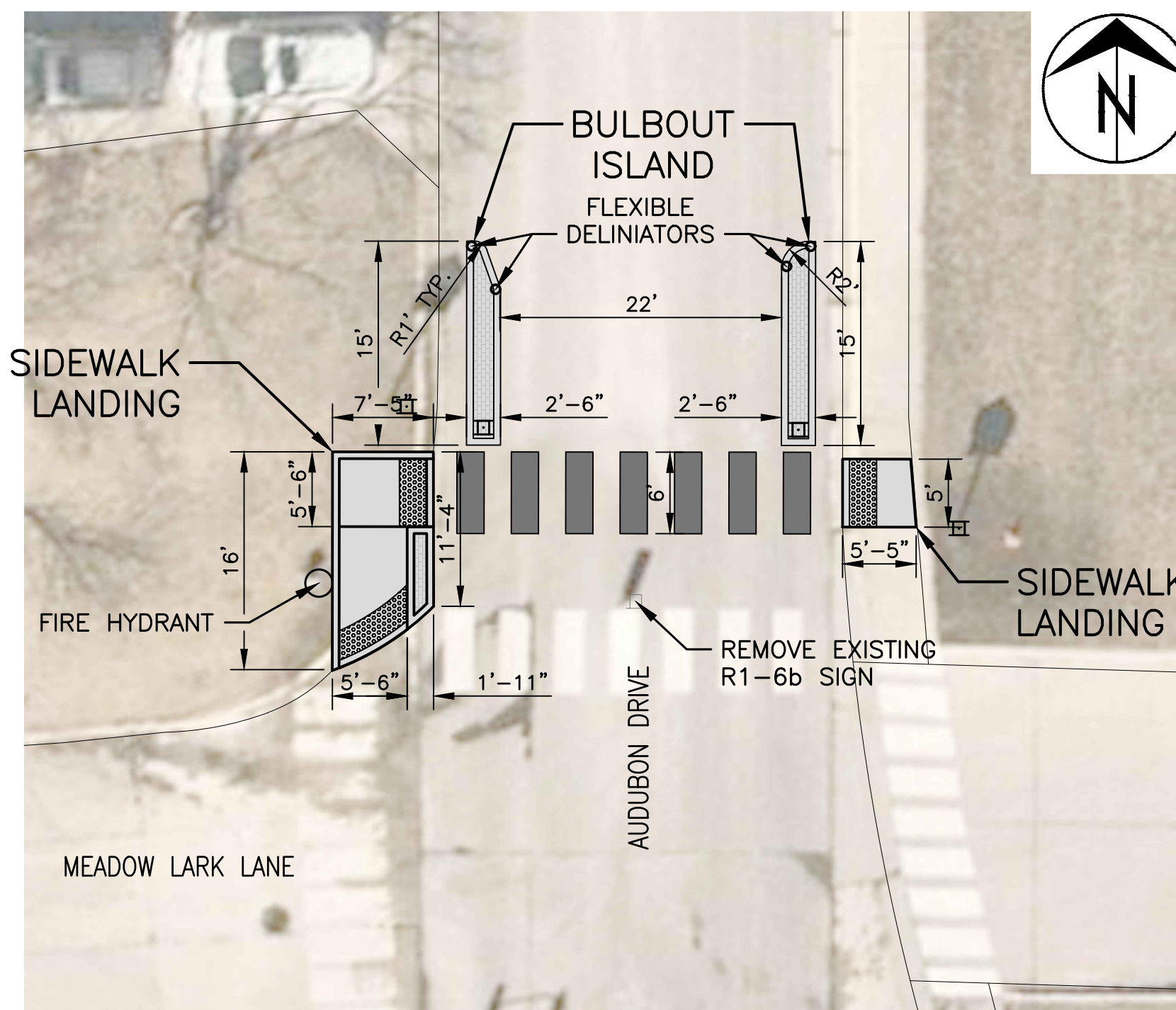
- DETECTABLE WARNING SHALL CONSIST OF RAISED TRUNCATED DOMES WITH A DIAMETER OF 0.9", A HEIGHT OF NOMINAL 0.2", AND A CENTER-TO-CENTER SPACING OF NOMINAL 2.35", AND SHALL CONTRAST VISUALLY WITH ADJOINING SURFACES, ACHIEVED BY THE INSTALLATION OF ADA SOLUTIONS 2436 REPBR, 2448 REPBR, OR 2460 REPBR (OR APPROVED EQUAL) AND SHALL BE AN INTEGRAL PART OF THE WALKING SURFACE.
- ADA SOLUTIONS 24RADREPBR OR APPROVED EQUAL TO BE USED WITH DETAIL 430.02, 432.02, AND 1000.0B.
- STAMPED CONCRETE IS NOT AN APPROVED EQUAL.
- DOWNTOWN DETECTABLE WARNINGS MAY BE ADA 2004 COMPLIANT DETECTABLE WARNING PAVERS.
- DETECTABLE WARNING PLATES ARE TO BE COLONIAL OR BRICK RED IN COLOR OR APPROVED EQUAL.
- DETECTABLE WARNING SURFACES SHALL BE 24" WIDE AND EXTEND THE FULL LENGTH OF THE PUBLIC USE AREA.



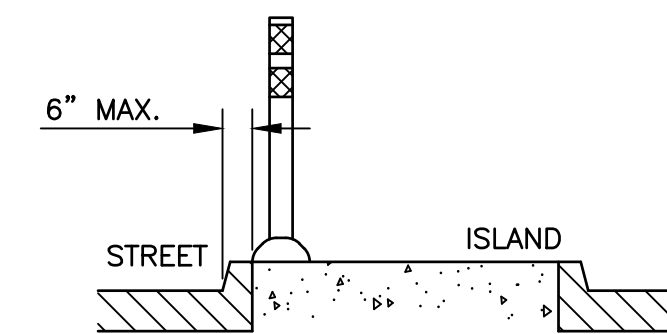
**SHEPARD BOULEVARD & BUCK'S RUN**  
1" = 10'



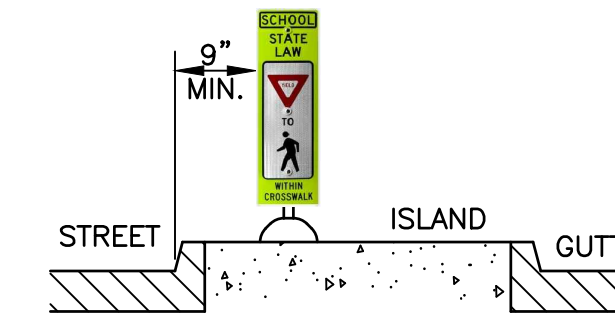
**SHEPARD BOULEVARD & DANFORTH DRIVE**  
1" = 10'



**AUDUBON DRIVE & MEADOW LARK LANE**  
1" = 10'

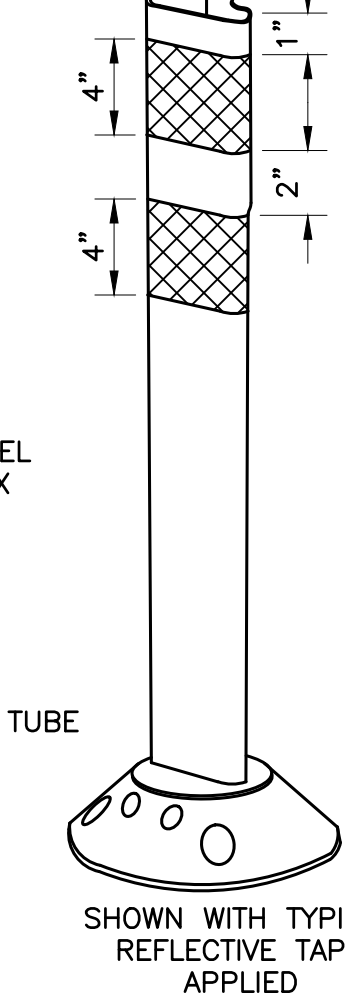
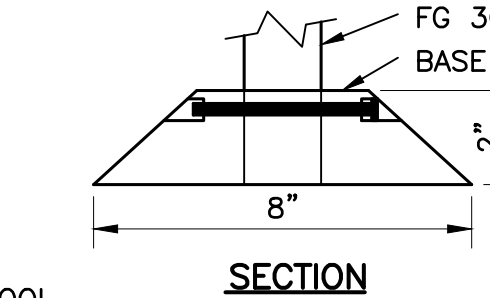
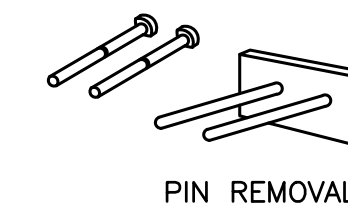
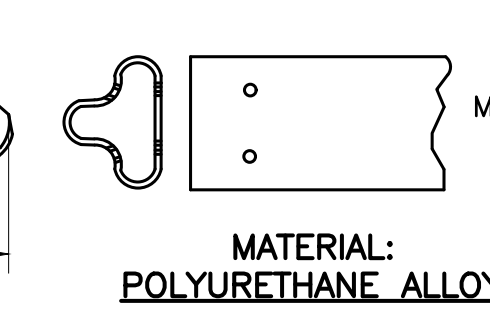
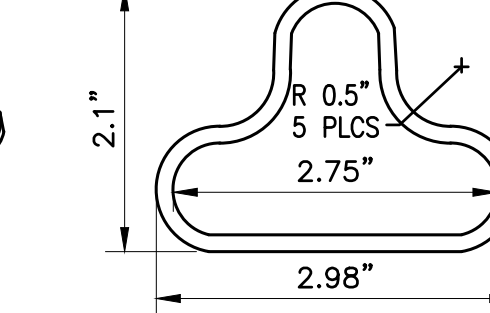
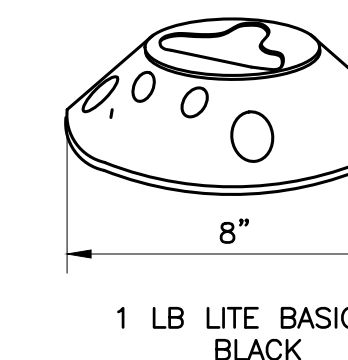


**FLEXIBLE DELINEATOR POST MOUNTING**  
NOT TO SCALE



**BULBOUT ISLAND R1-6 SIGN MOUNTING**  
NOT TO SCALE

**BASE OPTIONS:**



**NOTES:**

- INSTALLATION TO BE COMPLETED IN ACCORDANCE WITH MANUFACTURER'S SPECIFICATIONS.
- DO NOT SCALE DRAWINGS.
- POSTS, CURB AND REFLECTIVE SHEETING SHALL BE YELLOW IN COLOR.
- FLEXI-GUIDE POSTS SHALL BE 36" IN LENGTH.
- CONTRACTORS NOTE: FOR PRODUCT INFORMATION VISIT [www.modot.org](http://www.modot.org)

**FLEXIBLE DELINEATOR POST DETAIL**  
High-Performance Surface Mount Post  
NOT TO SCALE

Revision	
By	
Date	
No.	

**AUDUBON DRIVE - SHEPARD BLVD  
TRAFFIC CALMING**  
Crosswalk Improvement Details

City of Columbia, Missouri  
Department of Public Works

Shane Steven Creech  
Registered Professional Engineer  
PE-2007011061

File No.	
Scale:	As Shown
Date:	6/6/2022
Des.	A.S.B.
Dwn.	D.G.W.
Chk.	J.D.R.