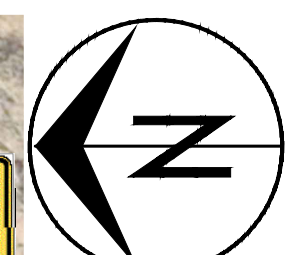
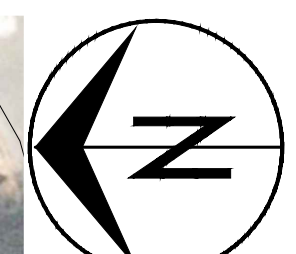
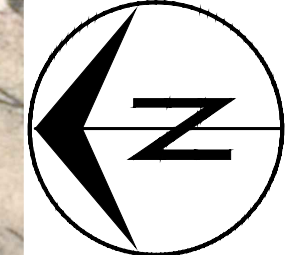
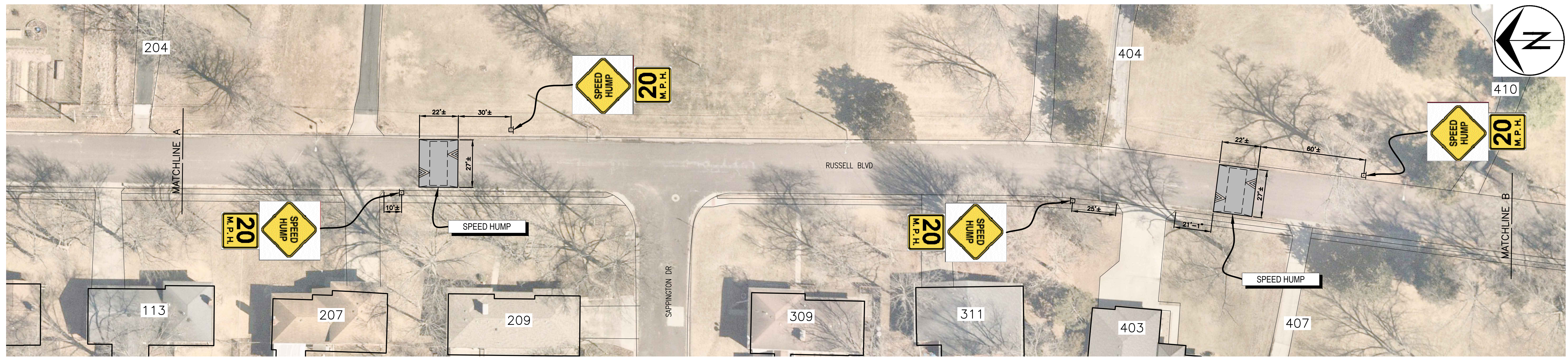
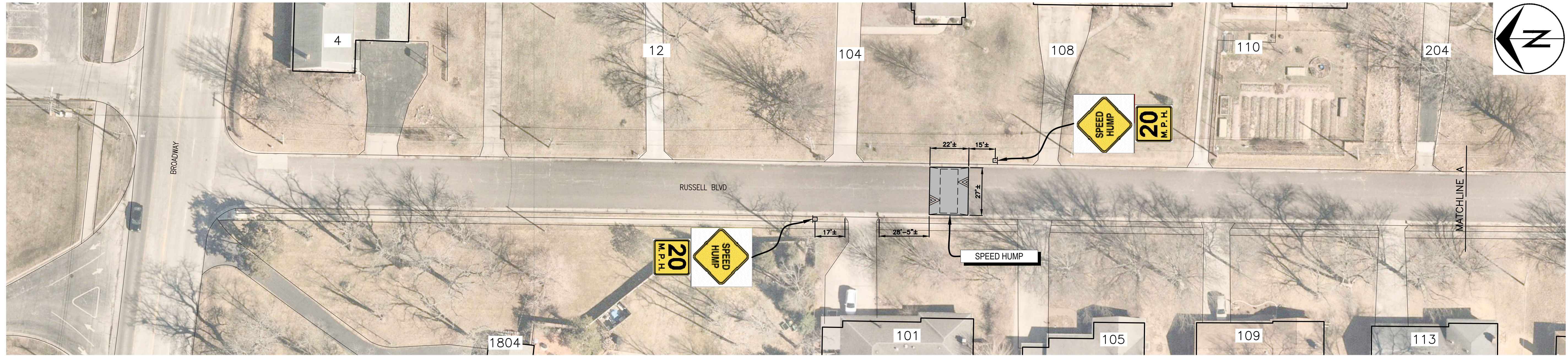


o:\caddpro\traffic\calming\russell_bld\traffic_calming.dwg



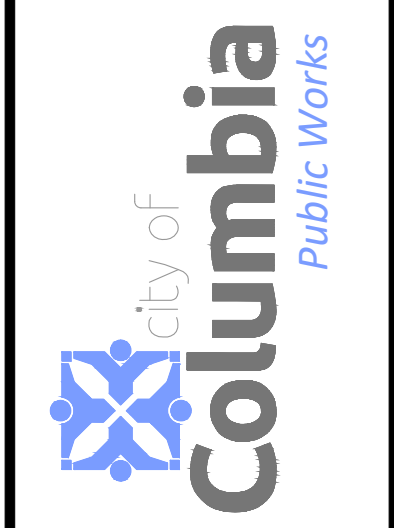
Revision	By	Date	No.

RUSSELL BLVD TRAFFIC CALMING

Plan

Mission
Provide safe, sustainable infrastructure that promotes positive communities.

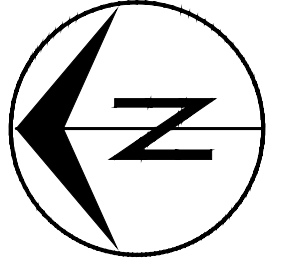
701 East Broadway
P.O. Box 6015
Columbia, MO 65205
(573) 875-2439



Shane Steven Creech
Registered Professional Engineer
PE-2007011061

File No.
Scale: 1" = 30'
Date: 2/2/2023
Des. A.S.B.
Dwn. A.S.B.
Chk. J.D.R.

o:\cadd\proj\traffic\calming\trussell_bld_traffic_calming.dwg



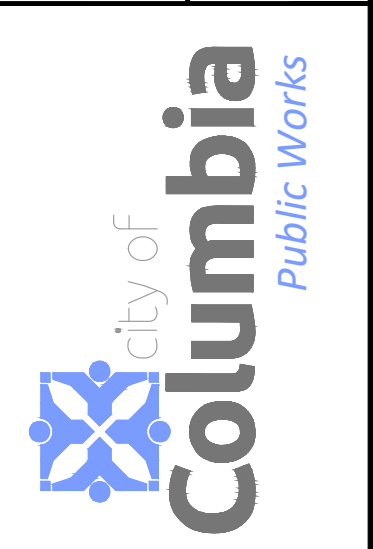
No.	Date	By	Revision

RUSSELL BLVD TRAFFIC CALMING

Plan

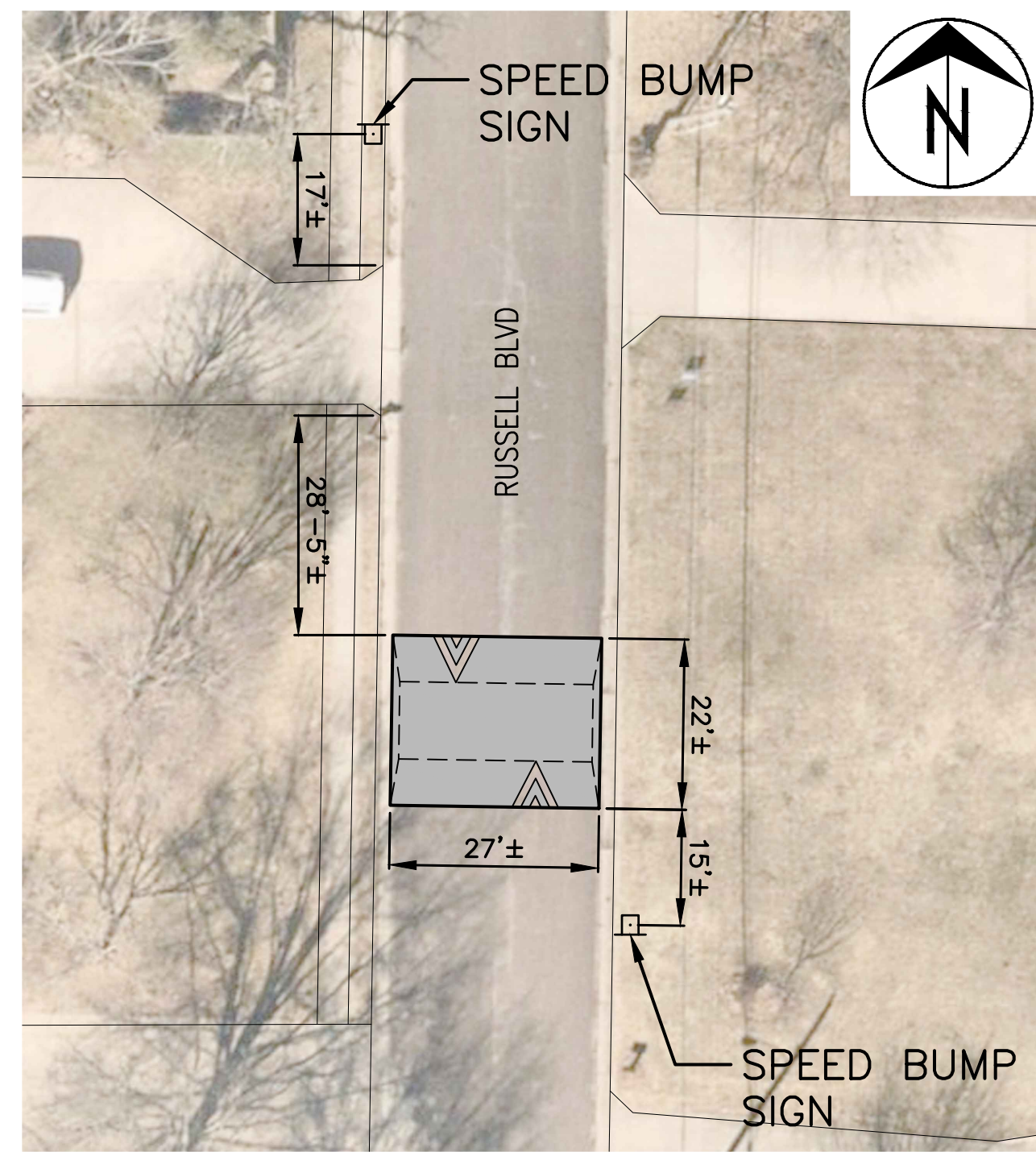
Mission
Provide safe, sustainable infrastructure that promotes positive communities.

701 East Broadway
P.O. Box 6015
Columbia, MO 65205
(573) 875-2493

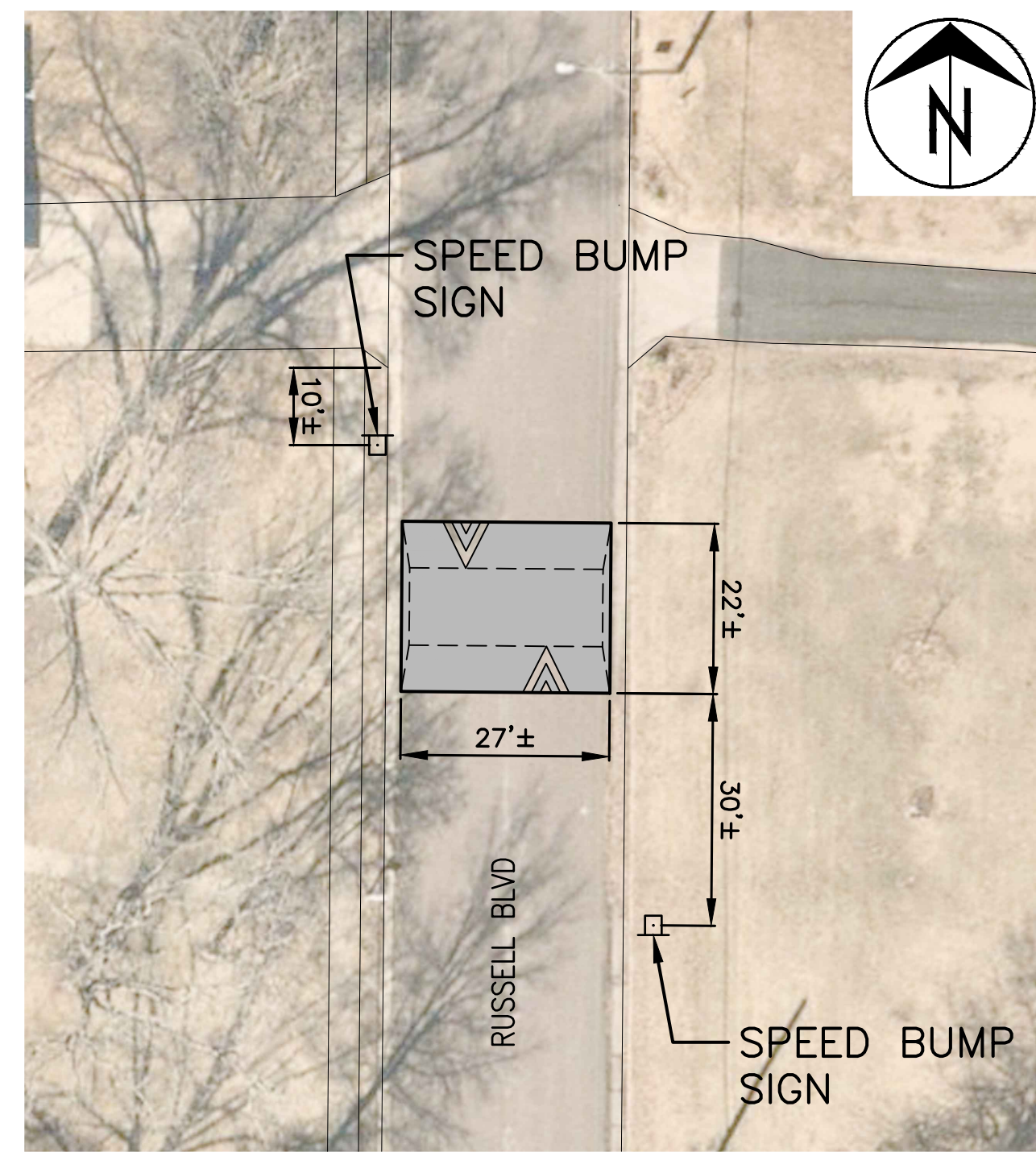


Shane Steven Creech
Registered Professional Engineer
PE-2007011061

File No.
Scale: 1" = 30'
Date: 2/2/2023
Des. A.S.B.
Dwn. A.S.B.
Chk. J.D.R.



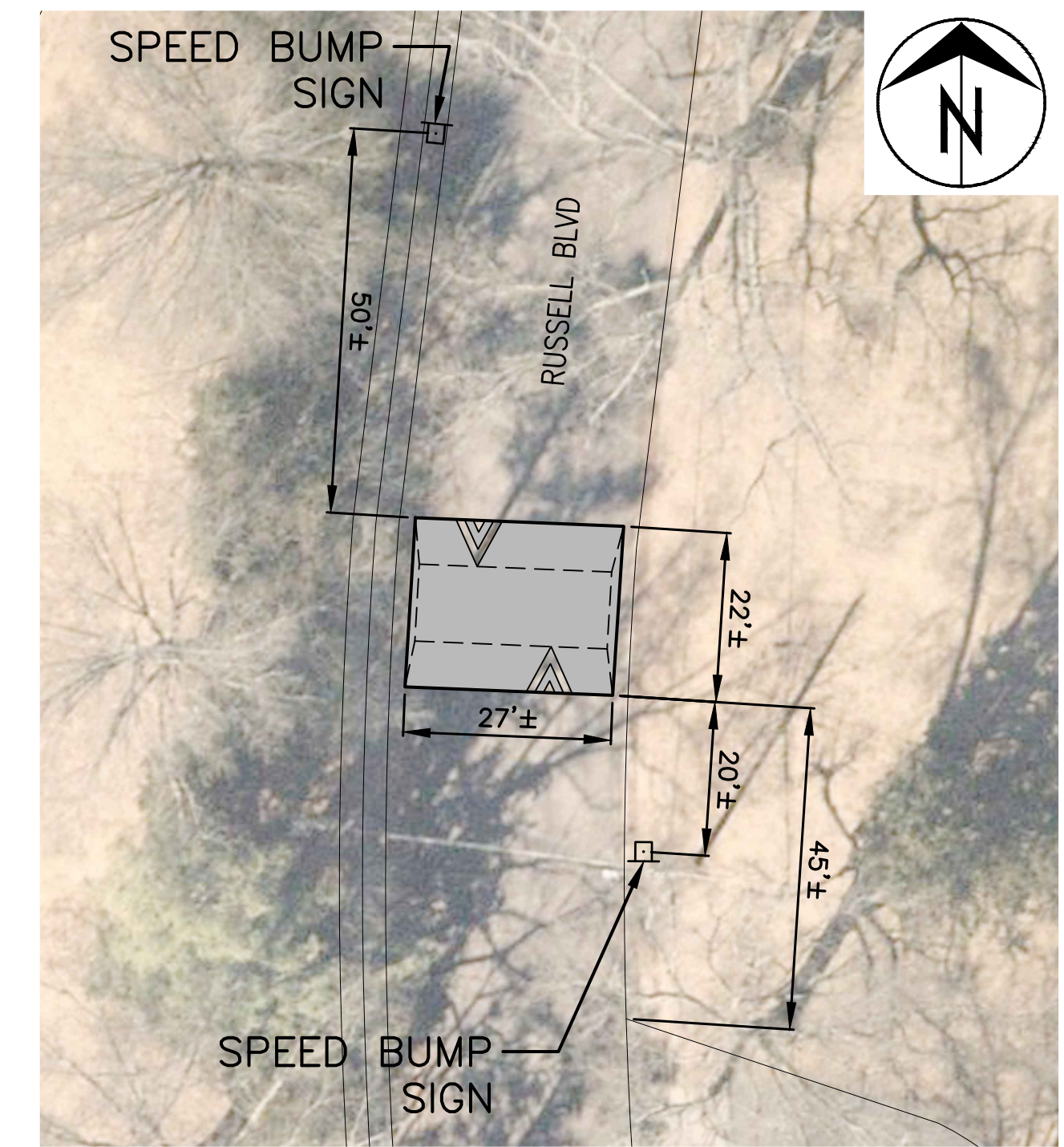
101 RUSSELL BOULEVARD
1" = 20'



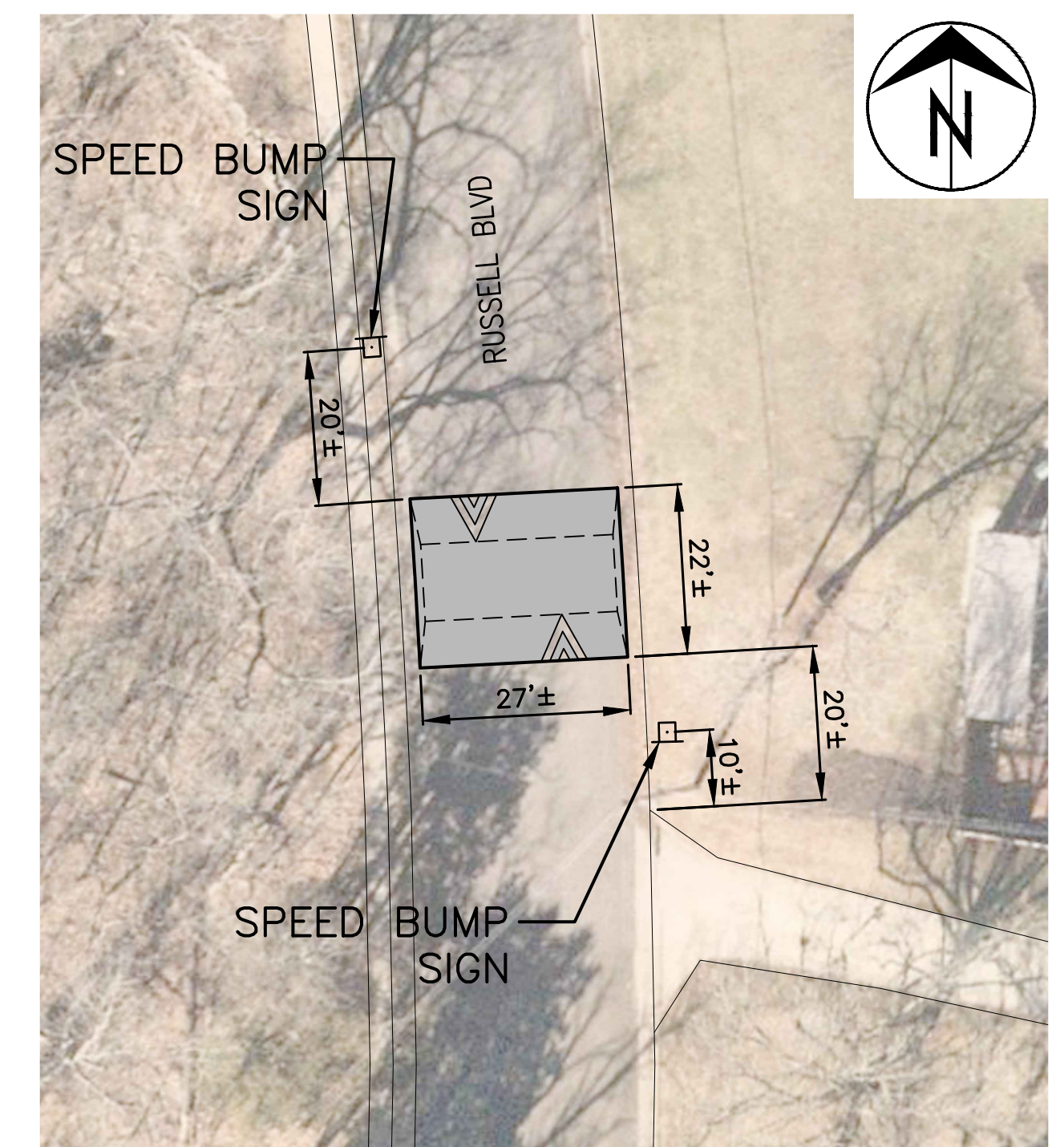
209 RUSSELL BOULEVARD
1" = 20'



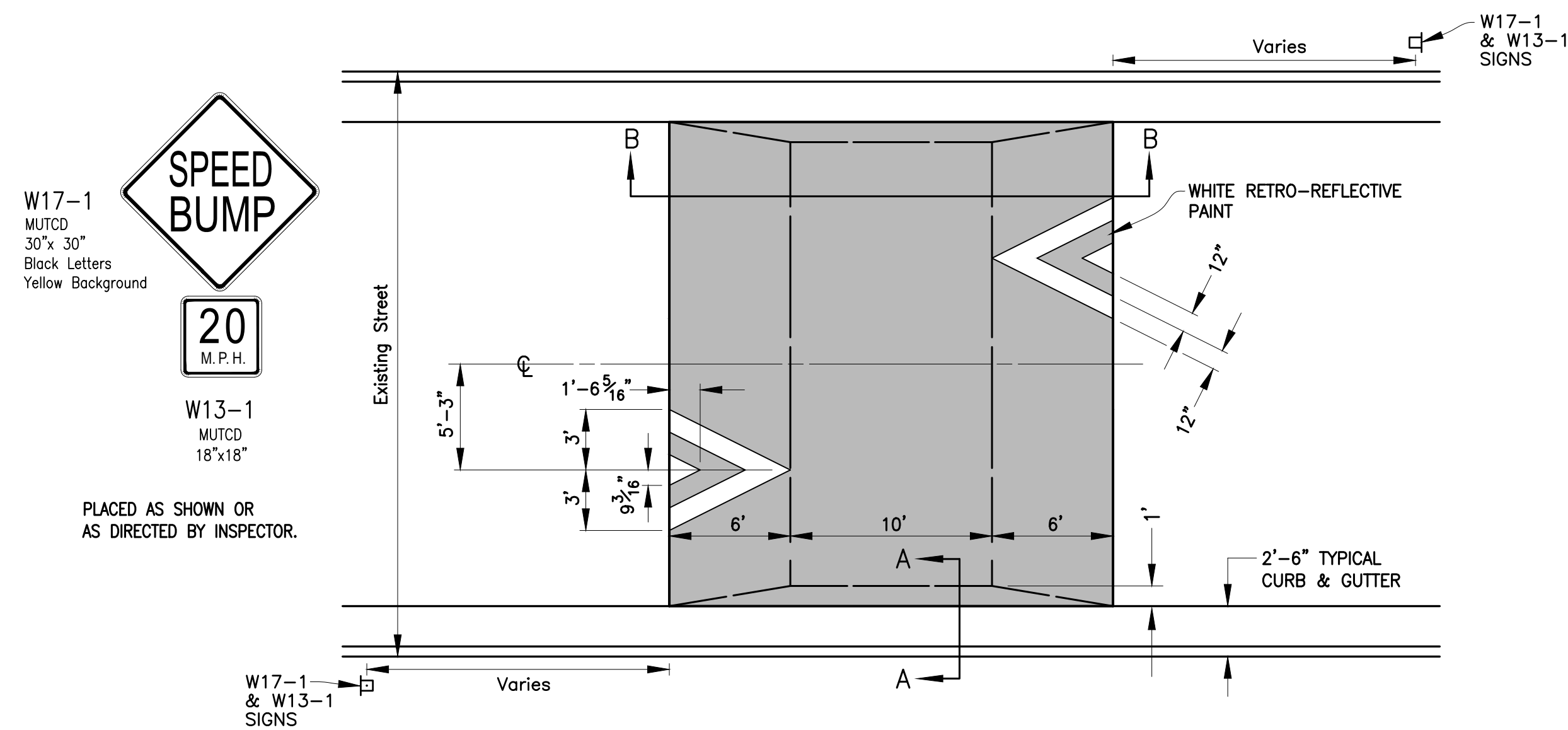
403 RUSSELL BOULEVARD
1" = 20'



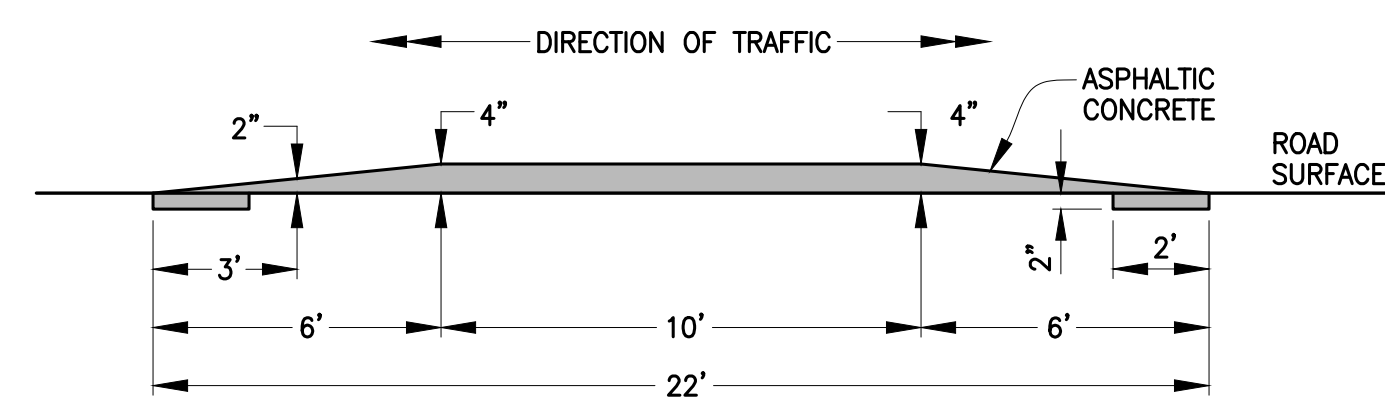
503 RUSSELL BOULEVARD
1" = 20'



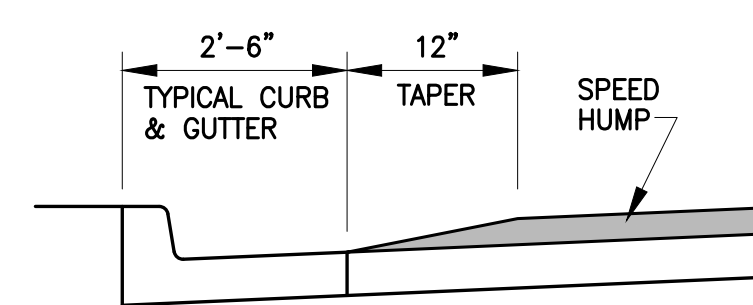
509 RUSSELL BOULEVARD
1" = 20'



PLAN
NOT TO SCALE



SECTION B-B
NOT TO SCALE



SECTION A-A
NOT TO SCALE

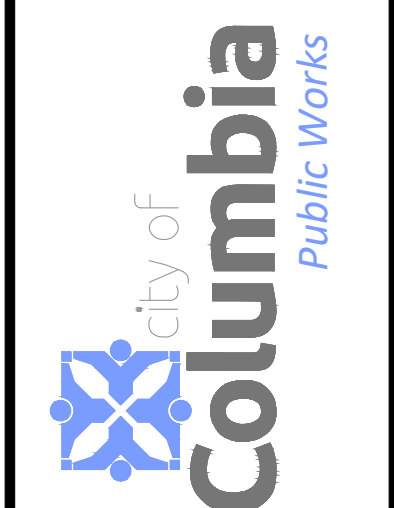
SPEED HUMP
NOT TO SCALE

No.	Date	By	Revision

RUSSELL BLVD TRAFFIC CALMING
Speed Humps

Mission
Provide safe, sustainable infrastructure that promotes positive communities.

701 East Broadway
P.O. Box 6015
Columbia, MO 65205
(573) 875-2493



Shane Steven Creech
Registered Professional Engineer
PE-2007011061

File No.	
Scale:	As Shown
Date:	2/2/2023
Des.	A.S.B.
Dwn.	A.S.B.
Chk.	J.D.R.

o:\cadd\proj\traffic\calming\101 russell blvd traffic calming.dwg

2015 Orthophoto Source: Boone County Assessor